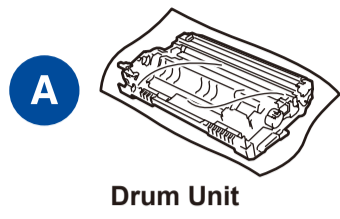
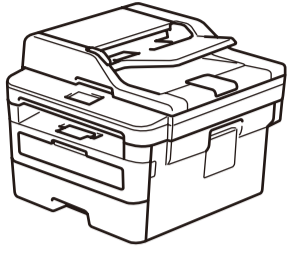


## Unpack the machine and check the components



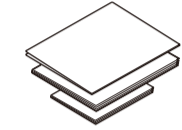
**Telephone Line Cord**  
(For MFC-B7720DN/MFC-B7700D)



**USB Interface Cable**



**Brother Installation Disc**



**Quick Setup Guide  
Reference Guide  
Product Safety Guide**

**NOTE:**

- The available connection interfaces vary depending on the model.
- Use the appropriate interface cable for the connection you want to use. (Network cable is not a standard accessory.)

**USB cable**

We recommend using a USB 2.0 cable (Type A/B) that is no more than 2 metres long.

**Network cable**

Use a straight-through Category 5 (or greater) twisted-pair cable.

- The illustrations in this *Quick Setup Guide* show the MFC-B7720DN.

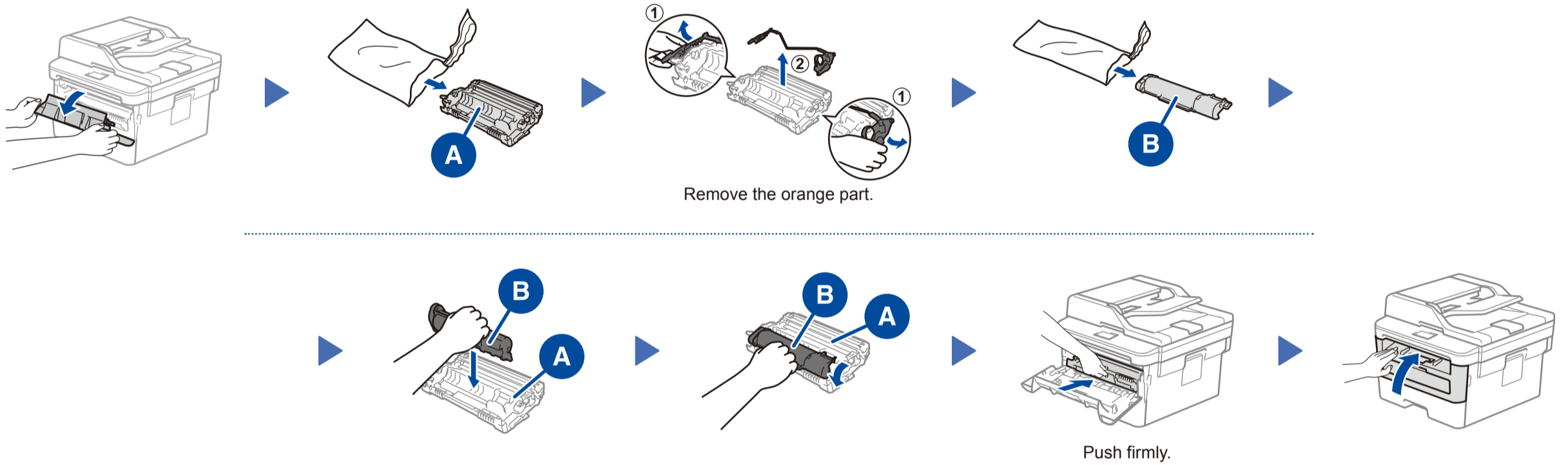
**Operation Videos**

[www.95105369.com](http://www.95105369.com)

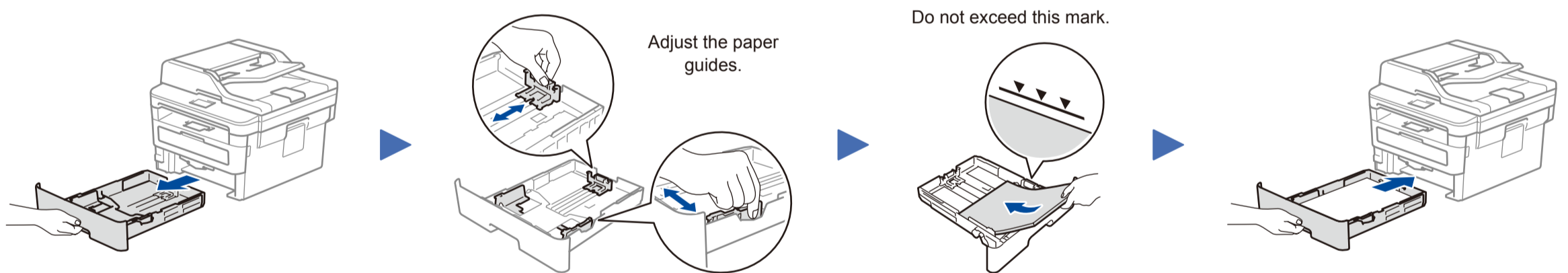


**Installation  
& Using  
Videos**

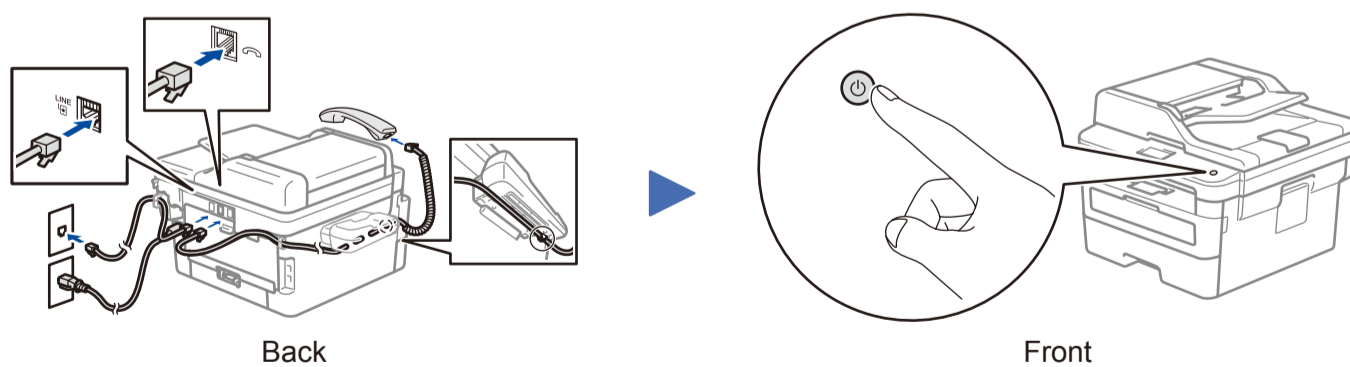
## 1 Remove the packing materials and install the drum unit and toner cartridge assembly



## 2 Load paper in the paper tray



## 3 Connect the power cord and turn the machine on



## 4 Select a device to connect to your machine

### Computer

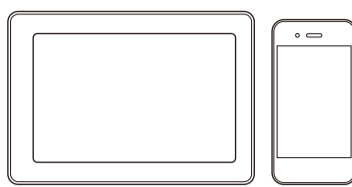


Go to **5** and follow the instructions.

**NOTE:**

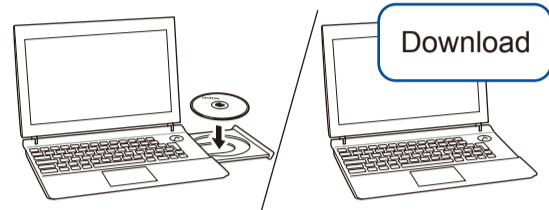
We recommend configuring wireless settings from your computer.

### Mobile Device (MFC-B7720DN/DCP-B7530DN)



Go to **6** and follow the instructions.

## 5 Connect your computer



Put the installation disc into your CD/DVD drive, or download the Full Driver & Software Package at:

[www.95105369.com](http://www.95105369.com)

If you are using a recently released operating system on your computer, visit the above websites for updated driver and software information.

▶ Follow the on-screen instructions and prompts.

For Windows®:

If the Brother screen does not appear automatically, go to **Computer (This PC)**. Double-click the CD/DVD-ROM icon, and then double-click **start.exe**.

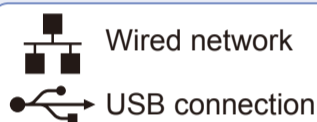
For Mac:

For full driver functionality, we recommend choosing the **CUPS driver** when adding a printer.

▶ Finished

Brother regularly updates firmware to add features and apply bug fixes. To check for the latest firmware, visit [support.brother.com/up5](http://support.brother.com/up5).

### Can't Connect? Check the following:



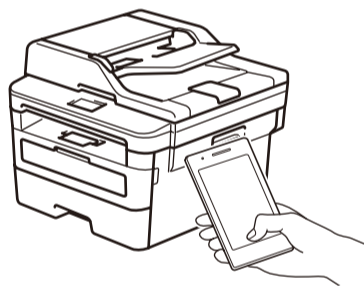
▶ Disconnect the cable.

▶ Restart your machine and computer, and then go to **5**.

▶ If still not successful, visit [www.95105369.com](http://www.95105369.com) for FAQs & Troubleshooting.

## 6 Print or scan using your mobile device (MFC-B7720DN/DCP-B7530DN)

Your mobile device must be connected to the same wireless network as your Brother machine.



AirPrint is available for all supported iOS devices including iPhone, iPad and iPod touch. You do not need to download any software to use AirPrint. For more information, see the *Online User's Guide*.



Search Mopria from the search engine you use, then download and install the Mopria® Print Service app using your Android™ device.



Download and install our free application **Brother iPrint&Scan**.



Read the two-dimensional code (or visit [www.95105369.com](http://www.95105369.com)), click **iPrint&Scan** from the mobile application menu on the right-lower corner to enter the download page.

### Optional apps

You can print from and scan to your mobile device using various apps. For instructions, see the *Online User's Guide*.

## Free Manuals Download Website

<http://myh66.com>

<http://usermanuals.us>

<http://www.somanuals.com>

<http://www.4manuals.cc>

<http://www.manual-lib.com>

<http://www.404manual.com>

<http://www.luxmanual.com>

<http://aubethermostatmanual.com>

Golf course search by state

<http://golfingnear.com>

Email search by domain

<http://emailbydomain.com>

Auto manuals search

<http://auto.somanuals.com>

TV manuals search

<http://tv.somanuals.com>