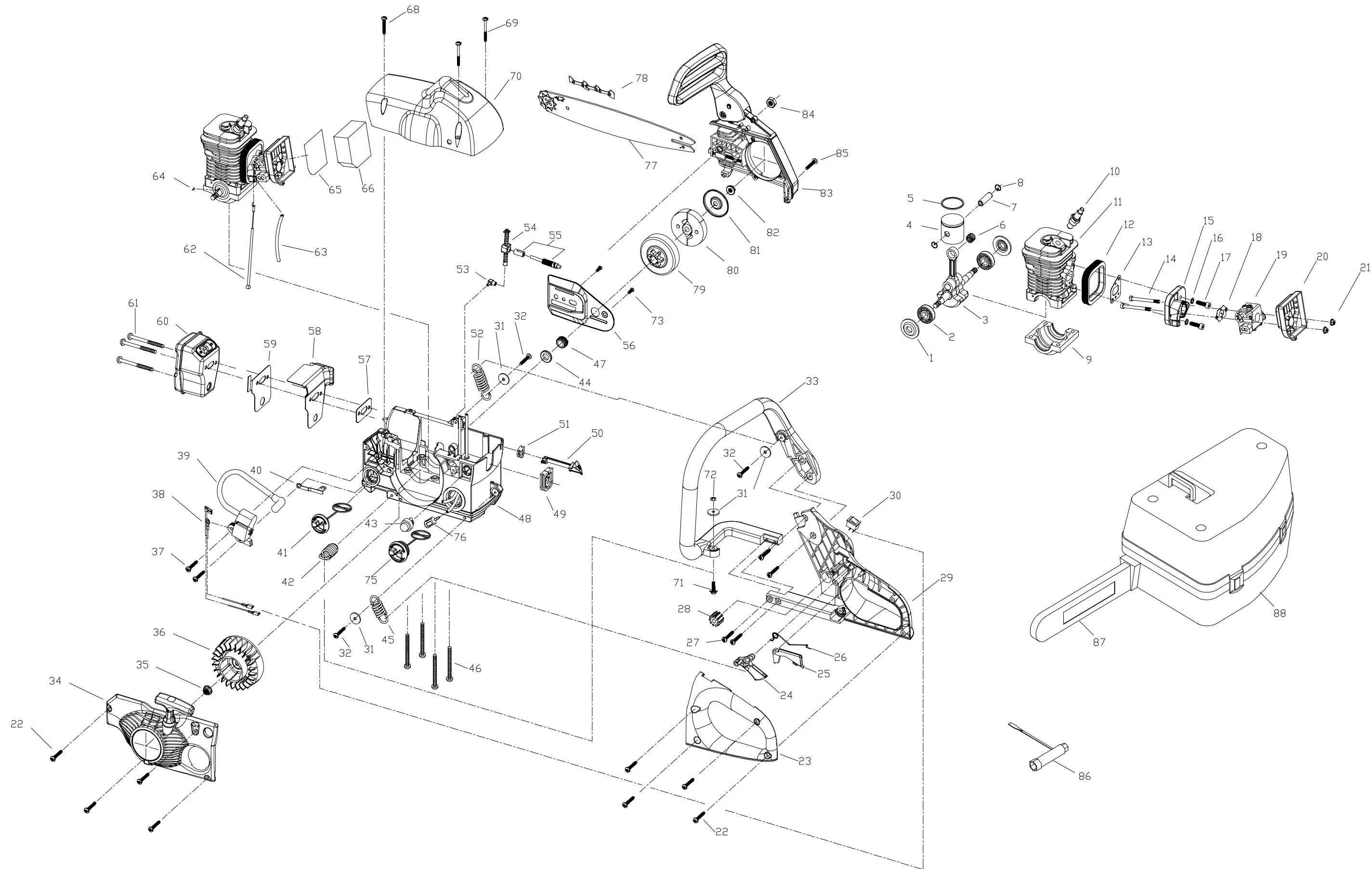




SERVICE SPARE PARTS LIST

SPECIFY MODEL NO. WHEN ORDERING PARTS	
36CC 16" GAS CHAIN SAW	
MODEL NO.	MS1636AVCC / 41BY66AR077

DATE	REVISED DATE	PAGE
11/16/2004	N/A	1/2





SERVICE SPARE PARTS LIST

SPECIFY MODEL NO. WHEN ORDERING PARTS		DATE	REVISED DATE	PAGE
36CC 16" GAS CHAIN SAW				
MODEL NO.	MS1636AVCC / 41BY66AR077	11/16/2004	N/A	2/2

No.	STK CODE	JFT Parts No.	Description	Q	No.	STK CODE	JFT Parts No.	Description	Q	No.	STK CODE	JFT Parts No.	Description	Q
1	B	MC-9157-310502	CAP, BEARING	2	30	A	MC-9022-310501	SWITCH	1	59	C	MC-9082-310501	BAFFLE	1
2	A	MC-9DB-620101	BEARING	2	31	B	MC-9WFB-05-21	WASHER	4	60	C	MC-9228-310504	MUFFLER ASS'Y	1
3	A	MC-9228-310505	CRANK/ROD ASS'Y	1	32	B	MC-9SKKBY8/16-0.625	SCREW	4	61	B	MC-9SXDB-06-70	SCREW	3
4	B	MC-9290-310502	PISTON	1	33	C	MC-9068-310503	HANDLE, FRONT	1	62	B	MC-9010-310502	CABLE, THROTTLE	1
5	B	MC-9189-310502	RING, PISTON	2	34	C	MC-9228-310502	STARTER HOUSING ASS'Y	1	63	B	MC-9129-310504	FUEL PIPE	1
6	A	MC-9NB-K101410	ROLLER, PISTON	1	35	B	MC-9NAB-5/16-24	NUT	1	64	A	MC-9221-310001	WOODRUFF KEY	1
7	A	MC-9PC-10-34.5	PIN, PISTON	1	36	B	MC-9169-310501	FLYWHEEL	1	65	B	MC-9183-310502	MESH	1
8	B	MC-9CA-10.3	RING	2	37	B	MC-9SKKBY8/16-0.75	SCREW	2	66	A	MC-9252-310501	FILTER, AIR	1
9	C	MC-9072-310501F	CASE, CRANK	1	38	A	MC-9010-310503	WIRE ASS'Y	1	68	B	MC-9SKKBY-8/16-1	SCREW	1
10	A	MC-9295-310502	SPARK PLUG	1	39	C	MC-9288-310501-CH	IGNITION ASS'Y	1	69	B	MC-9SKKBY8/16-1.4	SCREW	2
11	C	MC-9292-310501F	CYLINDER	1	40	B	MC-9051-310501	CONDUCTIVE PLATE	1	70	C	MC-9017-310509	SHROUD	1
12	B	MC-9012-310502	RUBBER, ISOLATOR	1	41	A	MC-9228-310207	OIL CAP ASS'Y	1	71		MC-9SKKBY05-18	SCREW	1
13	B	MC-9082-310505	SPACER	1	42	B	MC-9228-310514	SPRING ASS'Y	1	72		MC-9NAB-05	NUT	1
14	B	MC-9STDB-05-60	SCREW	2	43	A	MC-9142-310002	PRIMER	1	73	B	MC-6SDABB04-08	SCREW	2
15	C	MC-9082-310504	ISOLATOR, CARBURETOR	1	44	B	MC-9157-310501	FELT	1	75	C	MC-9228-310206	FUEL CAP ASS'Y	1
16	B	MC-6WSB-06	SPRING WASHER	2	45	B	MC-9024-310506	SPRING	1	76	A	MC-9182-310503	FILTER	1
17	B	MC-9SACB-06-25	SCREW	2	46	B	MC-9SFAB-06-55	SCREW	4	77	A	MC-9040-310511	BAR	1
18	B	MC-9082-310506	SPACER	1	47	B	MC-9073-310503	WORM	1	78	A	MC-6220-210816	CHAIN	1
19	C	MC-9287-310501	CARBURETOR	1	48	C	MC-9228-310511	HOUSING ASS'Y	1	79	C	MC-9228-310515	DRUM ASS'Y	1
20	B	MC-9228-310510	AIR FILTER ASS'Y	1	49	C	MC-9012-310503	HOLDER, CABLE	1	80	C	MC-9228-310528	CLUTCH ASS'Y	1
21	B	MC-9NHZ-05	NUT	2	50	B	MC-9114-310510	LEVER, CHOKE	1	81	C	MC-9077-310501	CAP, ANTI-DUST	1
22	B	MC-9SGKBY10/14-0.625	SCREW	8	51	B	MC-9012-310504	HOLDER, CHOKE LEVEL	1	82	B	MC-9NHC-09	NUT	1
23	C	MC-9068-310501	HANDLE, LEFT PART	1	52	B	MC-9024-310507	SPRING	1	83	C	MC-9228-310501	BRAKE KIT ASS'Y	1
24	A	MC-9028-310502	TRIGGER, THROTTLE	1	53	B	MC-9124-310102	CONNECTOR	1	84	B	MC-9NAZ-5/16-18	NUT	1
25	A	MC-9028-310501	TRIGGER, RELEASE	1	54	A	MC-9013-310501	OIL PIPE	1	85	B	MC-9SGKBY10/14-0.6	SCREW	1
26	B	MC-9024-310504	SPRING	1	55	B	MC-9228-310526	PUMP ASS'Y	1	86		MC-9042-310201	WRENCH	1
27	B	MC-9SKKBY10/14-0.68	SCREW	4	56	C	MC-9017-310508	CAP, ANTI-DUST	1	87		MC-9017-310213	SCABBARD	1
28		MC-9027-310101	RUBBER	1	57	B	MC-9082-310507	SPACER	1	88		MC-9120-310201	CARRY CASE	1
29	C	MC-9068-310502	HANDLE, REAR	1	58	C	MC-9082-310502	BAFFLE	1					

Stocking Codes are:

A - Dealer stocked

B - Distributor stocked

C - Factory stocked

Free Manuals Download Website

<http://myh66.com>

<http://usermanuals.us>

<http://www.somanuals.com>

<http://www.4manuals.cc>

<http://www.manual-lib.com>

<http://www.404manual.com>

<http://www.luxmanual.com>

<http://aubethermostatmanual.com>

Golf course search by state

<http://golfingnear.com>

Email search by domain

<http://emailbydomain.com>

Auto manuals search

<http://auto.somanuals.com>

TV manuals search

<http://tv.somanuals.com>