

Ref.No.IM-B098-01

Panasonic[®]

Operating Instructions
(Household) Beard/Hair Trimmer

Model No. ER2403



Before operating this unit, please read these instructions completely and save them for future use.

Thank you for choosing a Panasonic Beard/Hair Trimmer. Please read all instructions before use.

Important

► Cautions for use and storage

- The appliance may become warm during operation. This is normal.
- Turn off the appliance before changing the trimming length or removing the comb attachment.
- This appliance is not intended for use by persons (including children) with reduced physical, sensory or mental capabilities, or lack of experience and knowledge, unless they have been given supervision or instruction concerning use of the appliance by a person responsible for their safety. Children should be supervised to ensure that they do not play with the appliance.
- Use the appliance only for its intended use as described in these operating instructions. We strongly recommend that you do not use comb attachments not recommended by the manufacturer.
- We strongly recommend that you do not tamper with the moving parts.
- We strongly recommend that you do not use the appliance on animals.
- We strongly recommend that you do not disassemble the appliance. Take it to a qualified serviceperson when service or repair is required.
- We strongly recommend that you do not store the appliance in a place exposed to direct sunlight or near a heater or other source of heat.
- We strongly recommend that you do not place or store the appliance where it can fall into a bath or a sink. We strongly recommend that you do not place it in or drop into water or other liquids.

► Cautions for cleaning

- We strongly recommend that you do not take the housing apart as this can affect the watertight construction of the appliance.
- Wash the appliance in tap water. We strongly recommend that you do not use salt water or boiling water. Also, we strongly recommend that you do not use cleaning products that are designed for toilets, bathrooms or kitchen appliances. We strongly recommend that you do not submerge the appliance in tap water for a long time.
- Clean the housing only with a soft cloth slightly dampened with tap water or soapy tap water. We strongly recommend that you do not use a caustic cleaner such as benzine or bleach.

► Cautions for the battery

- Always follow the cautions printed on the battery.
- Check the polarities of the battery and install it correctly.
- Remove the battery immediately when it is used up.

- Remove the battery when not using the appliance for an extended period of time.
- Use the battery by the recommended use-by date.
Failure to do so may cause overheating or explosion of the battery, injury or contamination of surroundings due to leakage.

SPECIFICATIONS

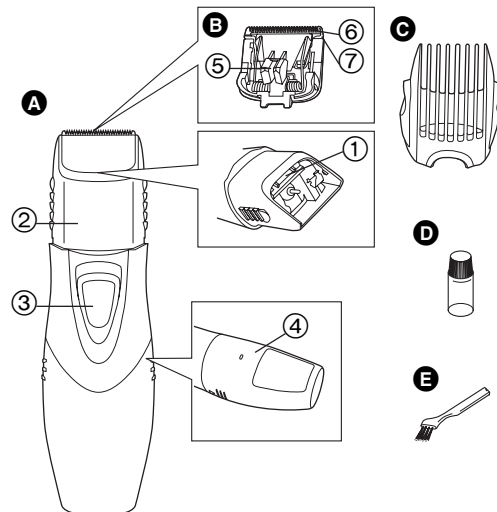
Batteries: Two AAA (LR03) dry-cell batteries (DC 3.0 V)
(Sold separately)

Weight: 128 g (including comb attachment and batteries)

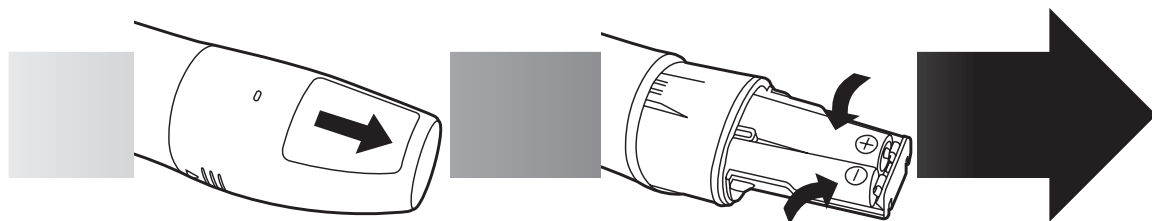
This product is intended for household use only.

Parts identification

- A** Main body
 - ① Mounting hook
 - ② Trimming length indicator
 - ③ Switch
 - ④ Battery cover
- B** Blade block
 - ⑤ Cleaning lever
 - ⑥ Moving blade
 - ⑦ Stationary blade
- C** Comb attachment
- D** Oil
- E** Cleaning brush



Replacing batteries



1. Slide the switch on the main body downwards to turn off the trimmer.
2. Remove the battery cover and insert two AAA (LR03) dry-cell batteries as illustrated.

3. Reattach the battery cover.

- We strongly recommend that you do not mix old and new batteries.
- Remove the batteries when not using the trimmer for a long time.
- Please do not use the rechargeable batteries.
- Please dispose of used batteries appropriately.

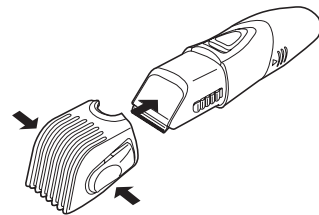
Use

Using the trimmer

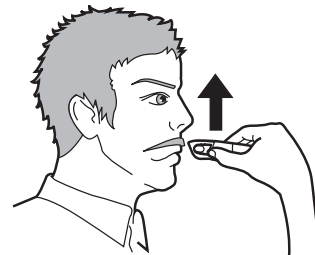
► Trimming your moustache

1. Apply a few drops of the oil to the blades.
2. Grasp the sides of the comb attachment and move it to the desired trimming length (between 3 mm and 15 mm).

Indicator	Trimming length
3	3 mm
6	6 mm
9	9 mm
12	12 mm
15	15 mm



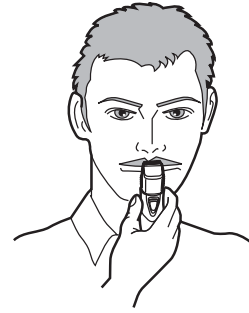
3. Slide the switch on the main body upwards to turn on the trimmer.
4. Move the trimmer upwards with the switch on the main body facing downwards as illustrated.





► **Shaping your moustache**

1. Remove the comb attachment and turn on the trimmer.
2. Trim around your moustache.



► **Shaping your sideburns**

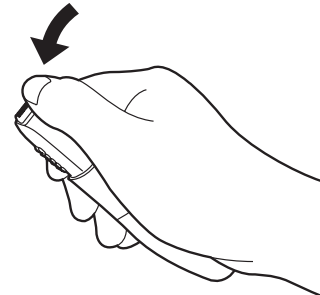
1. Remove the comb attachment and turn on the trimmer.
2. Place the trimmer at a right angle to your skin and cut your sideburns.



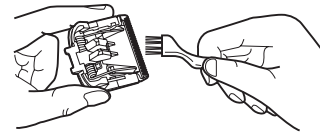
After using the trimmer

► **Using the cleaning brush**

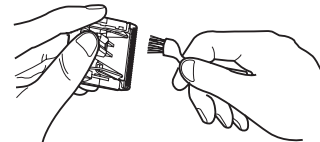
1. Hold the main body, place your thumb against the blades and then push them away from the main body.



2. Brush off any hair trimmings from the main body and from around the blade.



3. Brush any hair trimmings out from between the stationary blade and the moving blade while pressing down the cleaning lever to raise the moving blade.



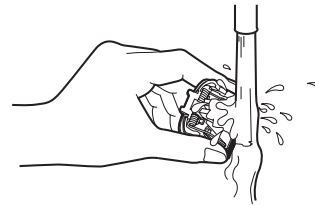


► Washing with water

The following is the symbol for a wet trimmer. The symbol means the hand-held part may be used in a bath or shower.

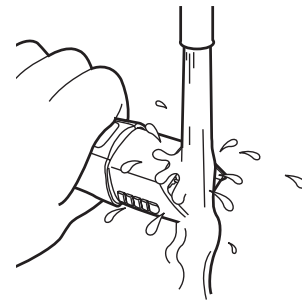


1. Remove the blade.
2. Rinse off any hair trimmings that are sticking to the blade with running water.



3. Rinse out any hair trimmings that are inside the trimmer with running water.

- We strongly recommend that you do not remove the battery cover when washing the main body.

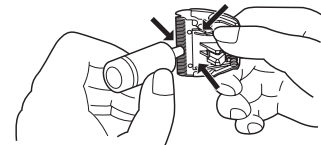


4. Gently shake the trimmer 4 or 5 times and then wipe off any water drops from the trimmer and the blade.
5. Place the trimmer on a towel with the switch on the main body facing downwards to let it dry fully.

Lubrication

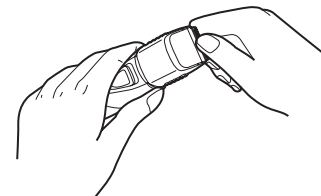
Lubricate the blades before using them or after cleaning them.

1. Apply a few drops of the oil to the points indicated by the arrows.



Remounting the blade

1. Fit the mounting hook into the blade mounting on the trimmer and then push in until it clicks.



► Blade life

Blade life varies according to the frequency and length of use of the trimmer. For example, the blade life is approximately 3 years when using the trimmer for 5 minutes 10 times a month. Replace the blades if cutting efficiency reduces substantially despite proper maintenance.



Panasonic Electric Works Wanbao (Guangzhou) Co., Ltd.
<http://panasonic.net>

Ⓕ EN

Printed in China
0000000000 X0000-0

Free Manuals Download Website

<http://myh66.com>

<http://usermanuals.us>

<http://www.somanuals.com>

<http://www.4manuals.cc>

<http://www.manual-lib.com>

<http://www.404manual.com>

<http://www.luxmanual.com>

<http://aubethermostatmanual.com>

Golf course search by state

<http://golfingnear.com>

Email search by domain

<http://emailbydomain.com>

Auto manuals search

<http://auto.somanuals.com>

TV manuals search

<http://tv.somanuals.com>