

plantronics®

**LEARN
MORE**

**ML10 and ML12
Bluetooth® Headset**

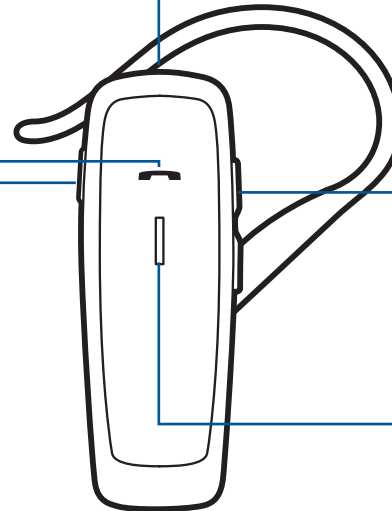
TAKE A GOOD LOOK

CALL BUTTON

- Take a call or end it (1 tap)
- Redial (2 taps)
- Initiate phone's voice-dialing (2 second press until tone is heard)
- Reconnect lost Bluetooth connection (1 tap if the headset doesn't automatically reconnect)
- Activate pairing mode after initial set up (press until LED flashes red/blue)
- Cancel missed call LED (1 tap)

POWER SWITCH

- On (slide to reveal black)
- Off (slide to reveal red)



MICRO USB CHARGING PORT

- Use with the AC charger:
 - 1 hour before first use
 - 2 hours (for full charge)
- Do not use headset while charging

VOLUME BUTTONS

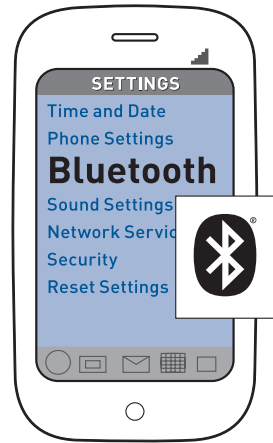
- Volume: up/down (tap + or – buttons per level change)

LED

- Charging (solid red)
- Low battery (3 red flashes at powering on)
- On a call (blue flash every 2 seconds)
- Missed call (purple flashes. Repeats for 5 minutes or until cancelled.)
- Pairing mode (repeating red/blue flashes)

Be safe! Please read the safety guide for important safety, charging, battery and regulatory information before using your new headset.

CONNECT TO YOUR PHONE



1. READY

Activate the Bluetooth feature on your phone, then get phone to add/search/discover new Bluetooth devices.

Phones have different menus to select from:

iPhone: Settings > General > Bluetooth > On
(starts the search for devices)

BlackBerry® smartphone: Settings/options > Bluetooth: On > Search for devices



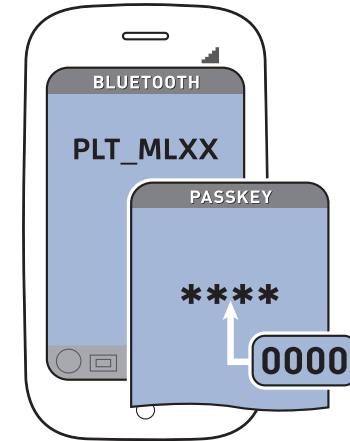
2. SET

First time, right out of the box:

With headset turned off, activate Bluetooth pairing mode by sliding Power switch on. The LED flashes red/blue to indicate pairing mode.

**Pairing new phone/
reconnecting original:**

With headset turned off, slide Power switch on. Press and hold the Call button until the LED flashes red/blue.



3. CONNECT

Select "PLT_MLXX" from the list of Bluetooth devices shown on your phone.

If phone asks for a passcode, enter four zeros (0000). You may see **** on screen. Some phones also ask to confirm headset connection after pairing.

Headset LED will stop flashing red/blue once your phone and headset are successfully paired/connected.

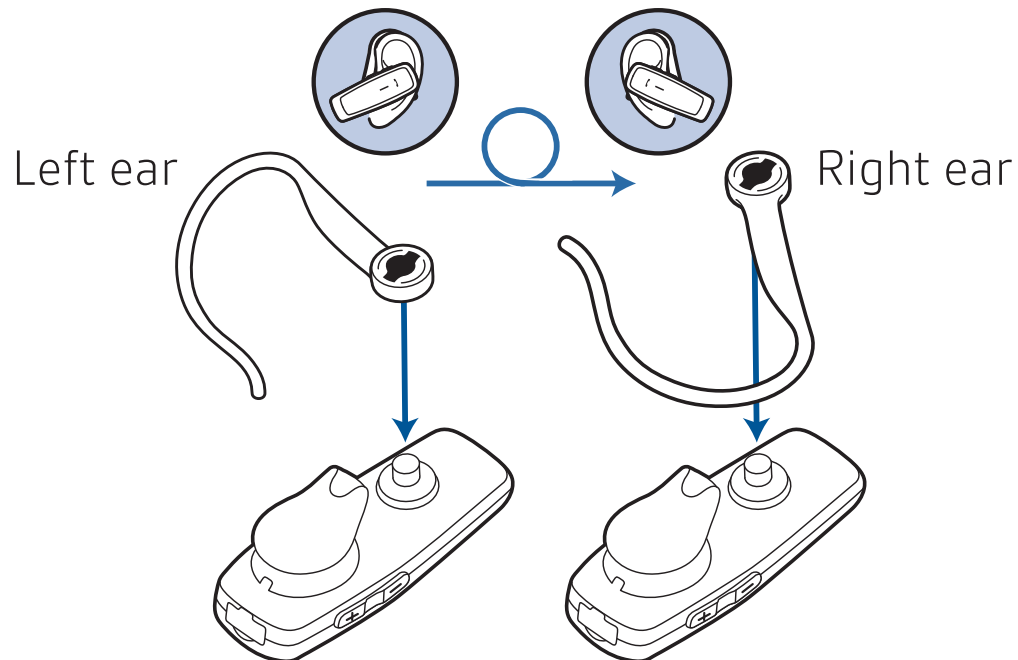
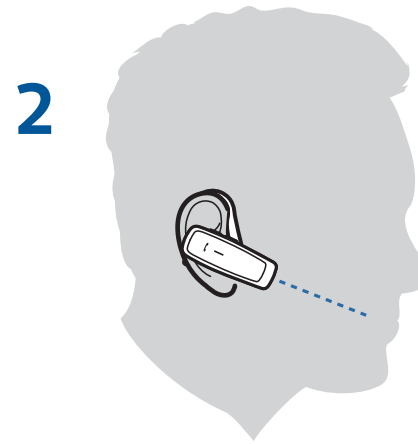
You can now make a call using your phone's keypad or voice-dialing feature.

"Pairing" is the set-up process of introducing your headset to your phone.

Before using your headset for the first time, you must pair it with your Bluetooth-enabled phone.

Pairing is a one-time process unless your phone loses the connection or you want to pair a new phone.

FIT EITHER EAR



TIPS

Understand the tones you hear:

This headset beeps different tones to advise you on what it is doing.

Usually, a high tone requires you to act (e.g. you lost the Bluetooth connection or need to recharge battery) but a low tone is just a reaction to you pressing a button (e.g. volume changes, call start/end).

Stay near your phone:

Bluetooth has a working “range” of up to 10 metres (33 feet) between the phone and headset before audio degrades and the connection is lost.

Know how to reconnect:

Your headset tries to reconnect a lost connection. If it can't, then tap the Call button once or manually reconnect via the phone's Bluetooth device menu.

SPECIFICATIONS

Talk time	Up to 7 hours
Standby time	Up to 8 days
Operating distance (range)	Up to 10 metres (33 feet), Class II
Headset weight	11.5 grams
Charge connector	Micro USB charging
Battery type	Rechargeable non-replaceable lithium ion polymer
Charge time (maximum)	2 hours for full charge
Power requirements	5V DC – 180mA
Bluetooth version	Bluetooth v2.0
Bluetooth profiles	Hands-Free (HFP) Profile 1.5 and Headset (HSP) Profile 1.1
Operating temperature	0 - 40°C (32°F - 104°F)
Storage temperature	0 - 40°C (32°F - 104°F)
Charging temperature	0 - 40°C (32°F - 104°F)

NEED MORE HELP?

en

Plantronics Ltd
Wootton Bassett, UK
Tel: 0800 410014

ar

منطقة الشرق الأوسط
لمزيد من المعلومات:
+44 (0)1793 842443*

cs

Czech Republic
+44 (0)1793 842443*

da

Danmark
Tel: 80 88 46 10

de

Plantronics GmbH
Hürth, Deutschland
Kundenservice:
Deutschland 0800 9323 400
Österreich 0800 242 500
Schweiz 0800 932 340

el

Για περισσότερες
πληροφορίες:
+44 (0)1793 842443*

es

Plantronics Iberia, S.L.
Madrid, España
Tel: 902 41 51 91

fi

Finland
Tel: 0800 117095

fr

Plantronics Sarl
Noisy-le-Grand
France
Tel: 0800 945770

ga

Plantronics BV
Regus House
Harcourt Centre
Harcourt Road
Dublin 2, Ireland
Service ROI: 1800 551 896

he

למידע נוסף, בקר באתר:
+44 (0)1793 842443*

hu

További információk:
+44 (0)1793 842443*

it

Plantronics Acoustics
Italia Srl, Milano, Italia
Numero Verde: 800 950934

nl

Plantronics B.V.
Hoofddorp, Nederland
NL 0800 7526876
BE 0800 39202
LUX 800 24870

no

Norge
Tel: 80011336

pl

Aby uzyskać więcej informacji:
+44 (0)1793 842443*

pt

Portugal
Tel: 0800 84 45 17

ro

Pentru informații
+44 (0)1793 842443*

ru

Дополнительная
информация:
+44 (0)1793 842443*

sv

Sverige
Tel: 0200 21 46 81

tr

Daha fazla bilgi için:
+44 (0)1793 842443*

*Support in English

www.plantronics.com

NEED MORE HELP?

Safety information:

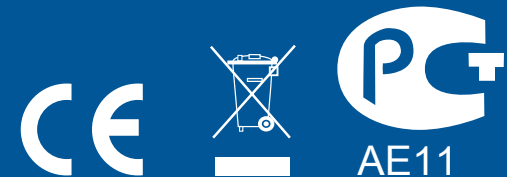
see the separate “For Your Safety” booklet

2-year limited warranty details:

www.plantronics.com/warranty

Plantronics B.V.
Scorpius 140
2132 LR Hoofddorp
Netherlands
www.plantronics.com

© 2011 Plantronics, Inc. All Rights Reserved. Bluetooth is a registered trademark of Bluetooth SIG, Inc. and any use by Plantronics is under license. All other trademarks are the property of their respective owners. U.S. Patents Pending. AM85663-03 (03.11) EN-UK



EEE Yönetmeliğine Uygundur

Free Manuals Download Website

<http://myh66.com>

<http://usermanuals.us>

<http://www.somanuals.com>

<http://www.4manuals.cc>

<http://www.manual-lib.com>

<http://www.404manual.com>

<http://www.luxmanual.com>

<http://aubethermostatmanual.com>

Golf course search by state

<http://golfingnear.com>

Email search by domain

<http://emailbydomain.com>

Auto manuals search

<http://auto.somanuals.com>

TV manuals search

<http://tv.somanuals.com>