

# Quick Start Guide

## Samsung Bluetooth® Headset WEP420

### Get connected in 4 quick steps

- Charge your headset
- Put your headset in pairing mode
- Turn on Bluetooth on your phone and pair with headset
- Test and use

Start here →

■ **Headquarters:**  
1301 East Lookout Drive Suite 150  
Richardson, TX 75082

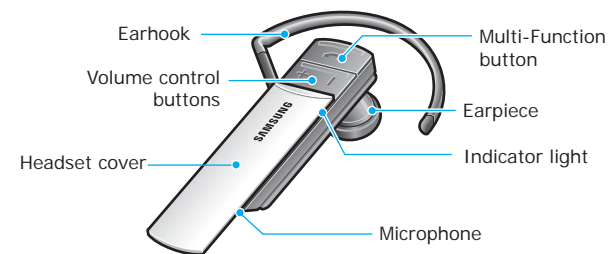
■ **Internet Address:**  
<http://www.samsungmobileusa.com/accessories>

■ **Customer Care Center:**  
1-888-987-4357



## Before using your headset

Thank you for purchasing the Samsung Bluetooth Mono Headset WEP420. We hope you will be delighted with its operation. Take a moment before you get started to familiarize yourself with your new headset.



## Check the accessories

Make sure you have the following items with your headset:

Charging Cradle, Travel Adapter, User's Guide

- The items supplied with your headset may vary, depending on your country or service provider.

- Bluetooth version: 2.0 (compatible with devices of Bluetooth version 1.1 or higher)
- Supported Bluetooth Profiles:
  - Headset Profile
  - Hands-Free Profile

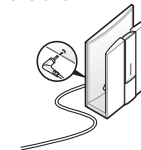
## Charge your headset

Charge the headset's battery fully before using the headset for the first time.

- 1 Insert your headset into the slot of the charging cradle.



- 2 Plug the travel adapter into the jack on the charging cradle.



- 3 Plug the travel adapter into the electrical outlet.

- Charge the headset until the red light on the headset turns to blue.
- The headset will be fully charged in approximately 2 hours.

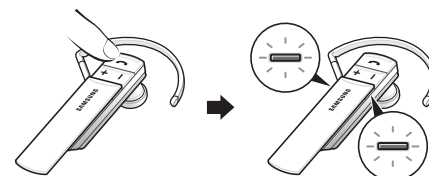
- 4 Remove the travel adapter from the charging cradle.

- The headset cannot be used while charging.  
• Use only a Samsung-approved charger or adapter.

## Put your headset in pairing mode

Before you can use your headset, you must pair it with your phone.

- 1 Ensure that the headset is off (see **Turn headset on/off** on the reverse side of this guide).
- 2 Press and hold the Multi-Function button until the indicator light turns on in blue (approximately 8 seconds).



## Turn on Bluetooth on your phone and pair with headset

- 1 Set your Bluetooth phone to discover the headset by following your phone's guide.

Typically, the steps involve going to the **Settings**, **Connection**, or **Bluetooth** menu on your phone and then selecting the option to discover Bluetooth devices.

Your phone will find the Samsung WEP420 headset and ask if you want to pair with it. Confirm this by pressing the **Yes** or **OK** key.

- 2 Enter a passkey or PIN, 0000 (4 zeros), then press the **Yes** or **OK** key.

## Test and use

Your phone and headset are now paired and ready to make and receive calls. To confirm they are operating properly, make a call:

- 1 Place the headset over your ear. See **Wear the headset** on the reverse side of this guide.
- 2 On your phone, make a call to the number you want.
- 3 If your phone and headset are successfully paired, you will hear ringing on the headset.

After you have successfully paired your phone and headset, you do not need to repeat these initial setup steps each time you use the headset.

## Using your WEP420

See **Features and Functions Guide** on the reverse side of this guide for information on using your WEP420.



# Features and Functions Guide

## SAMSUNG Bluetooth® Headset WEP420

### ! Important:

Be sure to first follow the Quick Start Guide on the reverse side of this guide to complete initial setup of your headset.

- **Headquarters:**  
1301 East Lookout Drive Suite 150  
Richardson, TX 75082
- **Internet Address:**  
<http://www.samsungmobileusa.com/accessories>
- **Customer Care Center:**  
1-888-987-4357



## Turn the headset on/off

### To turn the headset on,

Press and hold the Multi-Function button for 4 seconds until you see 4 blue flashes on the indicator light, then release. You will hear a tone and see the indicator light flashes while the power is on (see **Meaning of the indicator light** of this guide).

### To turn the headset off,

Press and hold the Multi-Function button for 4 seconds until you see blue and red flashes on the indicator light, then release. You will hear series of 2 tones and see the indicator light stops flashing.

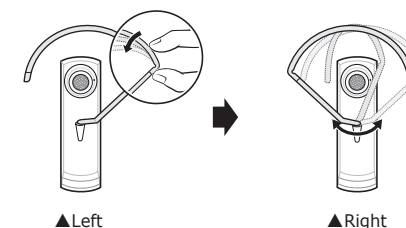
## Wear the headset

Wear the headset on your ear. In general, you will get better performance when there are no obstructions (including parts of your body) between the headset and the phone.



## Use the ear hook

Depending on what ear you are going to wear the headset, simply adjust the ear hook accordingly



## Troubleshooting

### My phone does not find my headset.

Make sure the blue indicator light on your headset turns on when your phone is searching for devices.

### My headset worked before but now it is not working.

Make sure your phone is on and the Bluetooth feature is turned on in your phone. If the Bluetooth feature has been turned off or was turned on only temporarily, you may need to restart the Bluetooth feature. If you have confirmed the Bluetooth feature is on in your phone, pair your phone and headset again.

## Make calls

### Make a voice activated call

If the phone's voice recognition feature is on, you can make a voice activated call.

- 1 Press and hold the Multi-Function button. You will hear the voice-activation tone.
- 2 Say the name of the person you wish to call.

Depending on your phone, this feature may not be supported.

### Redial the last number

Press the Multi-Function button. When you release the button, the phone dials the last dialed or received number.

- Depending on your phone, how to redial the last number may vary.

### End a call

Close the headset cover.

### Answer a call

When a call comes in, the headset sounds the ring tone and flashes the blue indicator twice. Choose either of the following ways to answer the call:

- When the headset cover is closed, open the cover.
- When the headset cover is open, press the Multi-Function button.

### Adjust the volume

Press [+] on the side of the headset to increase the volume level and press [-] to decrease the volume level.

## Use enhanced features

Enhanced features are available for phones that support the Hands-Free Profile and enhanced features.

### • Reject a call

When you receive a call, close the headset cover or press and hold the Multi-Function button. Depending on your phone's setting or type, you may only be able to mute the ringer or this feature may not be supported.

### • Answer a second call

When your phone notifies you of another incoming call while you are on a call, press and hold the Multi-Function button to answer the second call. You can switch between calls by pressing and holding it. Depending on your phone, this feature is not supported.

### • Place a call on hold

While you are on a call, press and hold the Multi-Function button. To retrieve the call, press and hold the Multi-Function button again. Depending on your phone, this feature may not be supported.

## Meaning of the indicator light

Light	Tone	Status
Flashes in blue every 8 seconds.	Quick series of 2 tones. (Active mode starts.)	The headset is in Active mode. <ul style="list-style-type: none"><li>• The headset has an active call in progress.</li><li>• You can talk up to 4 hours.*</li></ul>
Flashes in blue every 3 seconds.	Quick series of 2 tones. (Standby mode starts.)	The headset is in Standby mode. <ul style="list-style-type: none"><li>• The headset is waiting for a call.</li><li>• The headset can be in Standby mode up to 70 hours.*</li></ul>
Flashes in red.	5 tones every 20 seconds.	The battery of the headset is low. <ul style="list-style-type: none"><li>• There is less than 10% of battery power left. Recharge the battery.</li></ul>

\*Depending on the phone type and usage, the actual time may vary.

## Free Manuals Download Website

<http://myh66.com>

<http://usermanuals.us>

<http://www.somanuals.com>

<http://www.4manuals.cc>

<http://www.manual-lib.com>

<http://www.404manual.com>

<http://www.luxmanual.com>

<http://aubethermostatmanual.com>

Golf course search by state

<http://golfingnear.com>

Email search by domain

<http://emailbydomain.com>

Auto manuals search

<http://auto.somanuals.com>

TV manuals search

<http://tv.somanuals.com>