
MP3 Music & Video Player

User Guide



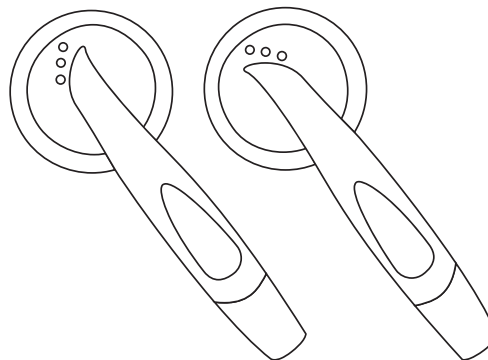
2 GB

SMP516-2

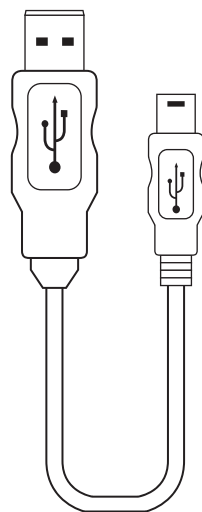
IN THE BOX



The Sharper Image
MP3 Video Player



Stereo Headphones



USB 2.0 Cable
(for battery charging
and high speed data transfer)



Installation CD



Quick Start Guide

FCC INFORMATION

FCC Part 15

This equipment has been tested and found to comply with the requirements for a Class B digital device under Part 15 of the Federal Communications Commission (FCC) rules. These requirements are intended to provide reasonable protection against harmful interference in a residential installation. This equipment generates, uses and can radiate radio frequency energy and, if not installed and used in accordance with the instructions, may cause harmful interference to radio communications. However, there is no guarantee that interference will not occur in a particular installation. If this equipment does cause harmful interference to radio or television reception, which can be determined by turning the equipment off and on, the user is encouraged to try to correct the interference by one or more of the following measures:

- Re-orient or relocate the receiving antenna.
- Increase the separation between the equipment and receiver.
- Connect the equipment into an outlet on a circuit different from that to which the receiver is connected.
- Consult the dealer or an experienced radio/TV technician for help.

Changes or modifications to this equipment not expressly approved by the party responsible for compliance could void the user's authority to operate the equipment.

INTRODUCTION

Congratulations on purchasing the Sharper Image MP3 Music & Video Player.

This manual contains important safety information and correct operation instructions.

Before using the player, read this manual thoroughly and keep it for future reference.

Copyright Information

Trademarks and trade names used in this instruction manual are owned by their respective companies or organizations.

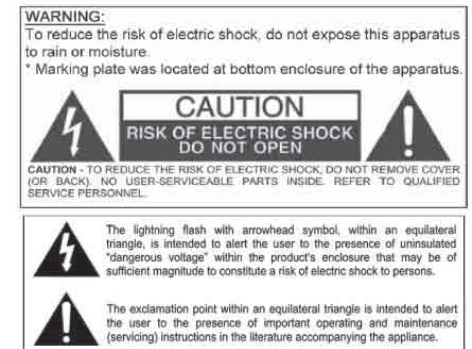
Unauthorized duplication of any recordings whether downloaded from the internet or made from audio CDs is a violation of copyright laws and international treaties.

The making of unauthorized copies of copy-protected material, may be an infringement of copyrights and constitute a criminal offence. This equipment should not be used for such purposes.

IMPORTANT SAFETY PRECAUTIONS

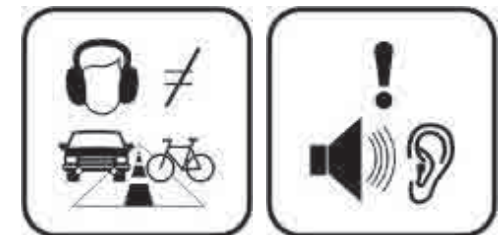
Always follow these basic safety precautions when using your player. This will reduce the risk of product damage and personal injury.

- Do not disassemble, repair or modify the player by yourself. Refer servicing to qualified personnel.
- This device contains a built- in battery, do not dispose of in fire.
- In the event that the battery is leaking, do not handle the device with your bare hands. Contact the service center for help since the liquid may remain in the player. If your body or clothes had contact with the battery liquid, wash it off thoroughly with water. Also, if some liquid gets into your eyes, do not rub your eyes but immediately wash them with clean water, and consult a doctor.
- Keep the player away from direct sunlight and any direct heat source.
- Do not expose the unit to rain or moisture.
- Do not use the player in dry environments to avoid static.
- Never apply heavy impact on the player, or place it on a magnet.
- Route the USB cable so that people and pets are not likely to trip over it.
- Disconnect the USB cable from the computer when you do not use the player for a long time.
- Clean only with a dry cloth. Make sure the player is turned off before cleaning. Do not use a liquid cleanser.
- Be sure to back up your files. We will not be liable for the loss of data due to improper operation, repair or other causes.



Precautions in using the earphones

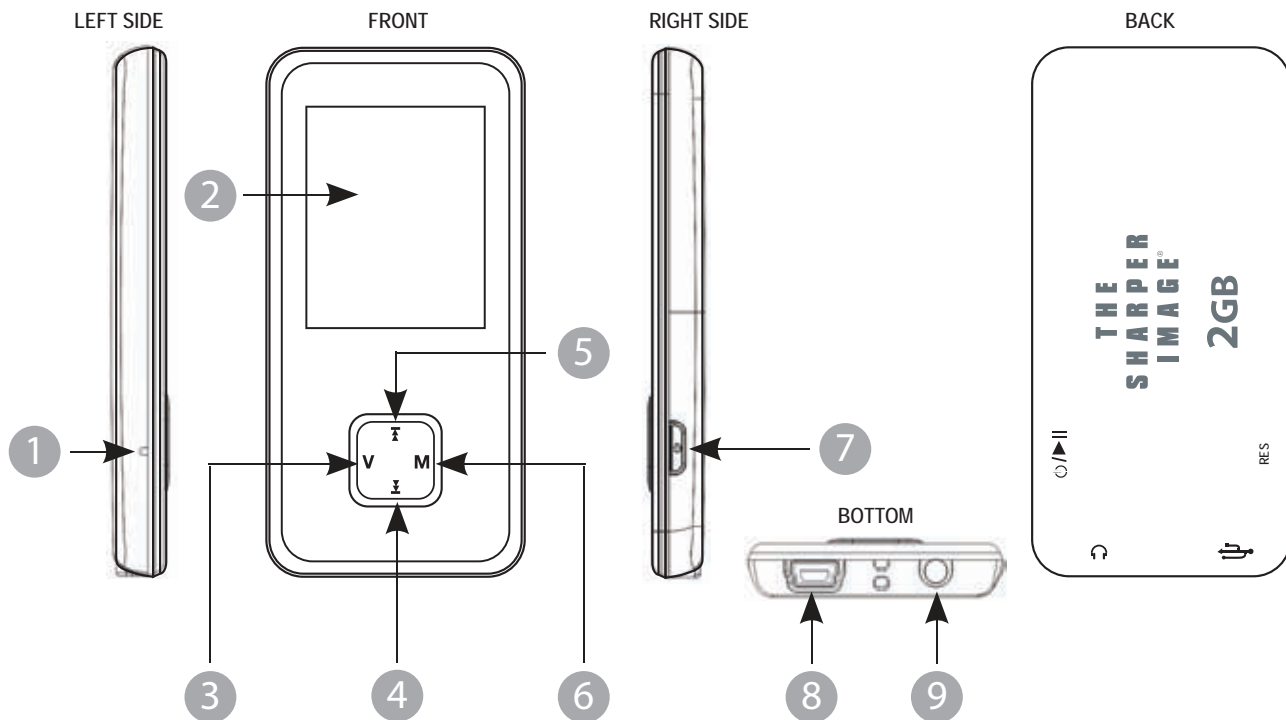
- Do not use the earphones while driving an automobile or riding a bicycle. It is dangerous, and against the law. To avoid an accident, do not turn up the volume of the earphones too high while walking.
- It is not recommended that you use the headphones at a high volume for an extended time, as this may cause hearing damage.



FEATURES

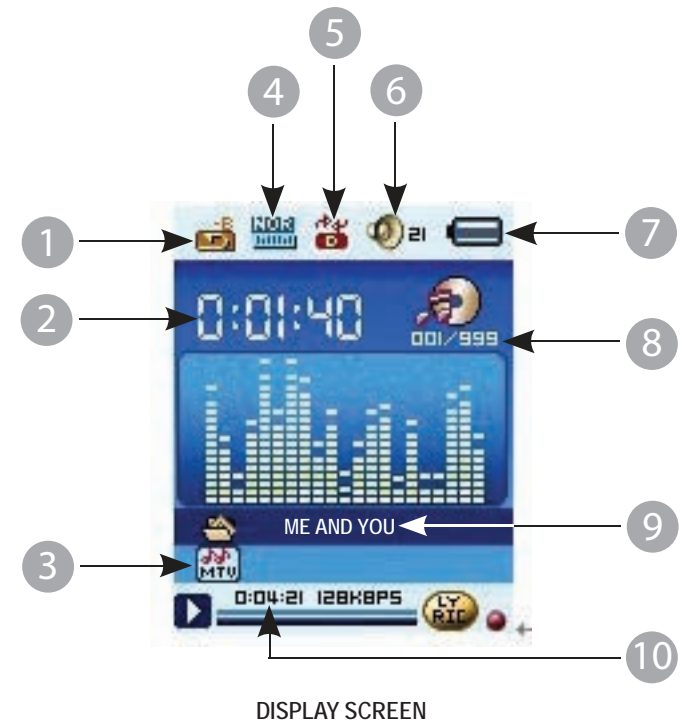
- 2 GB Memory
- High resolution color display
- USB 2.0 high speed connector
- Plays video (converted)
- Displays JPG pictures
- Plays MP3/WMA music
- Digital voice recording with built-in microphone
- Includes high-fidelity headphones
- Li-Ion rechargeable battery
- Folder navigation
- Artists and lyrics on screen (Id3-Tag and LRC)
- Equalizer

LOCATION OF CONTROLS



- 1. Reset hole
- 2. LCD screen
- 3. Volume control [V]
- 4. Next [▾]
- 5. Previous [▴]

- 6. Menu control [M]
- 7. Power / Play button [⏻ / ▶]
- 8. USB 2.0 Hi-Speed connector for battery charging and data transfer
- 9. Headphone jack



- DISPLAY SCREEN
- 1. Repeat / Follow / Contrast
 - 2. Tempo rate
 - 3. File format
 - 4. EQ mode
 - 5. Loop mode
 - 6. Volume
 - 7. Battery status
 - 8. Song number
 - 9. Song name / Singer
 - 10. Play time

CONNECTING TO A COMPUTER

Files can be transferred directly into the player using the USB data cable. Make sure your computer is powered on. Below is the procedure of connecting the player to a computer:

1. Plug the larger USB connector of the USB cable into the USB port on the computer.
2. Plug the other end (small) of the USB cable to the player.
3. The computer system detects "New hardware" and starts to install the driver automatically. Wait for the system to finish the installation.
When it has finished, "The Sharper MP3" will be created in "My Computer".

TRANSFERRING MEDIA FILES TO THE PLAYER

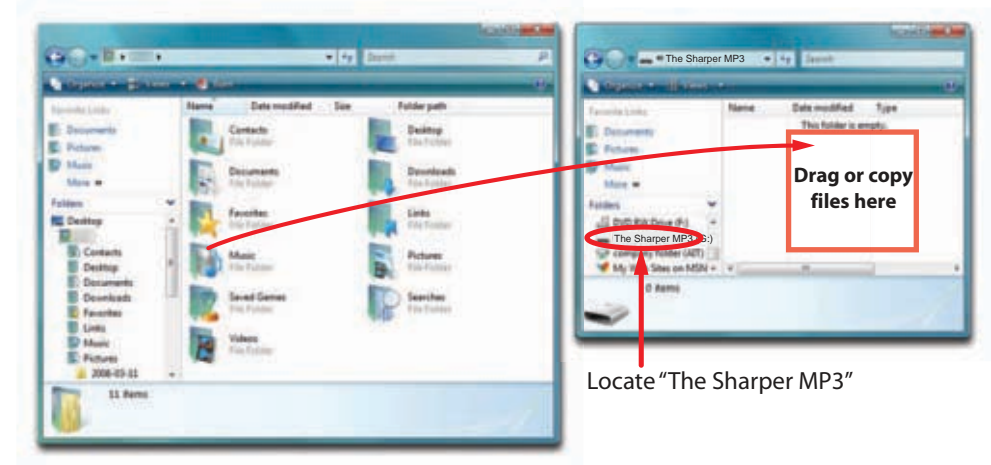
To download files such as music, pictures, videos, or text from your computer, perform the following steps:

1. Connect the MP3 player to the USB port of your computer.
2. Open "Windows Explorer" or "My Computer", and locate "The Sharper Image MP3".
3. Select the files on your computer, and simply move it into "The Sharper MP3" in the usual way (drag-and-drop, copy-and-paste).
After copying is completed, the data will be available on the MP3 player.

OR

*We recommend using **Windows Media Player** to organize and transfer music and pictures to your player. For more information regarding **Windows Media Player**, please refer to the **Quick Start Guide**.*

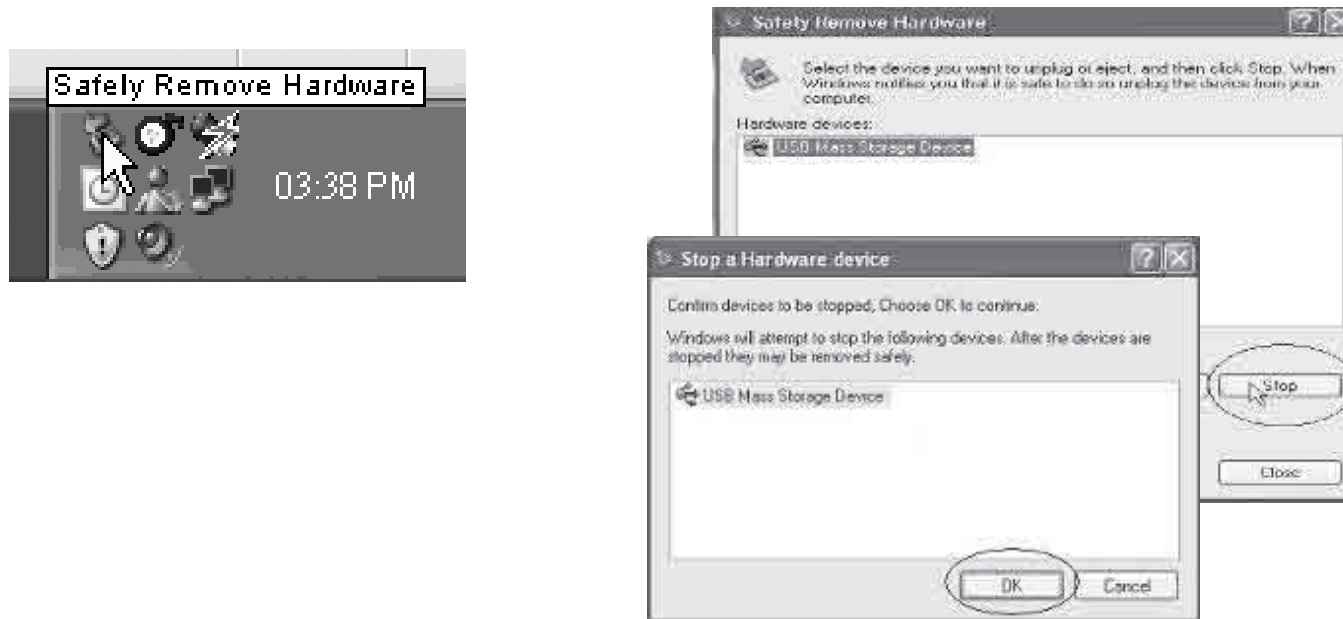
Note: Please do not disconnect the USB cable during loading, it may cause malfunction of the player and the files.



Disconnecting the USB cable

After completing the file transfer, please disconnect the USB cable the following way:

1. Double click the green arrow "Safely Remove Hardware" in the task bar on the bottom right of the window.
2. Select "USB Device" and click "Stop".
3. When the "Stop a Hardware device" appears, click "OK" to disconnect the USB mass storage device, and unplug the player safely.



CHARGING THE BATTERY

Your **MP3 Video Player** has an integrated rechargeable Li-Ion battery. It comes fully charged from the factory, but it is recommended to perform a full recharge before the first use.

Recharge the battery by connecting the player to a computer using the included USB 2.0 cable (using any USB type mini B with 5-pins will also work).

Charging time is between 3-5 hours, depending if the player is powered off or working. To keep the battery in good condition, we recommend not using the player while charging, with the power switch in the "OFF" position, and not leaving it charging for more than 8 hours.

For battery saving, your **MP3 Video Player** has two systems:





It will power off the LCD display after 30 seconds of inactivity, and it will power off completely after another 10 minutes of inactivity. Both systems are configurable, respectively, browsing the menus "**SETTINGS**" → "**Display**", or "**SETTINGS**" → "**Power off Time**" → "**Off**". In order to maximize the battery's lifespan, it is recommended to not completely disable this power saving feature.

Important:



- Fully charge the player before using it for the first time.
- Charge the player right away when the "Low battery" message is displayed.
- Do not over charge or discharge the player. Over charging or discharging will shorten the battery life.
- The battery could be over discharged if the player is not used for a long time (over three months). To avoid over discharge, fully charge the player every two or three months and always keep the voltage of the battery above 50%.

BASIC OPERATION



Turning on/off

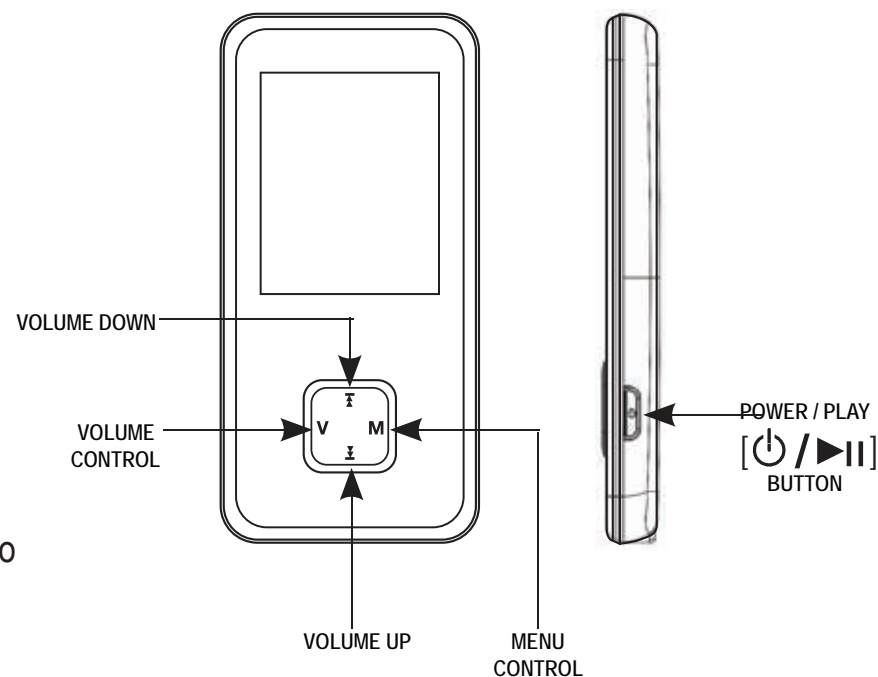
- To turn on the player press and HOLD the Power / Play [ / ] button for 3 seconds until the LCD screen lights up.
- To turn the player off, press and HOLD the Power / Play [ / ] button until the LCD screen shuts off.

Adjusting the volume

- Press the [V] button and then press the [] button to decrease volume.
- Press the [V] button and then press the [] button to increase volume.

Main menu

- Press the [M] button to access the Main menu.
- Using the [] or [] button, select the option, and then press the [M] button to enter.
- To return to the Main menu, press and HOLD the [M] button.



MUSIC

1. Connect the headphones to headphone jack.
2. Press and **HOLD** the [⏻/▶||] button to turn on the player.
3. Select the **MUSIC** option, and then press the [M] button to confirm.
4. Press the [⏻/▶||] button to play.
5. To select a song, use the [⏮] or [⏭] button.

Adjusting volume

- To adjust the volume, press the [V] button, and then using the [⏮] or [⏭] button, decrease or increase volume.

Pausing playback

- While a song is playing, press the [⏻/▶||] button to pause the playback.
- To resume playback, press the [⏻/▶||] button once again.

Skipping tracks

- Briefly press the [⏮] button to go to the previous track.
- Briefly press the [⏭] button to go to the next track.

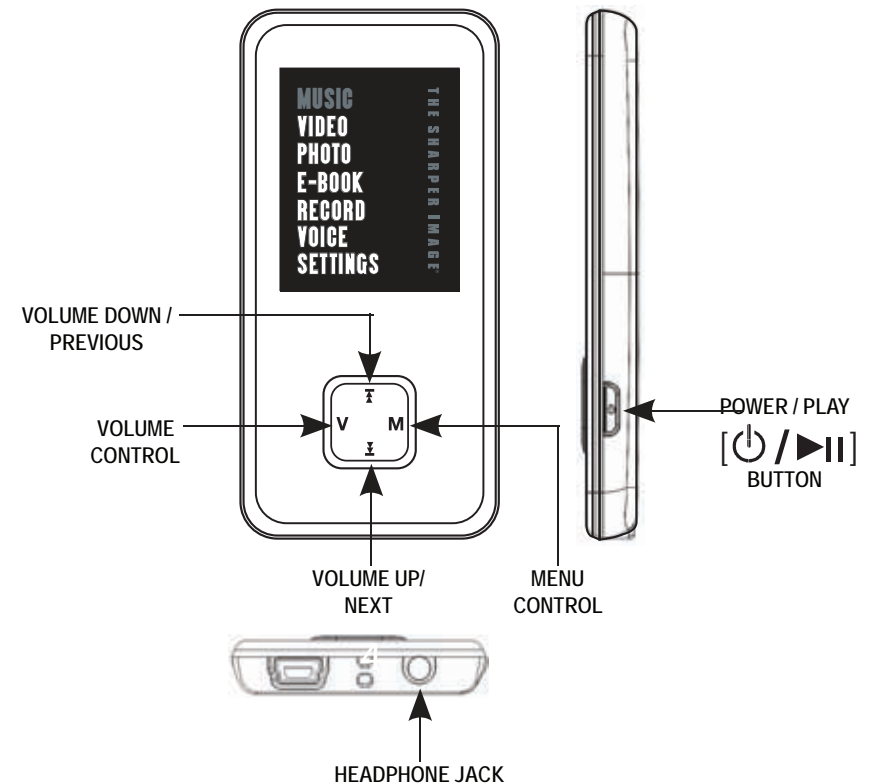
Searching backward or forward within a track

- Press and **HOLD** the [⏮] button to search backward within a track.
- Press and **HOLD** the [⏭] button to search forward within a track.

Music player interface

If the song has lyrics (LRC file), they will be shown on screen, otherwise the display will show the equalizer.

Note: The song lyrics is a text file named exactly after the music file with the .LRC extension. If some of your music files do not have the LRC file, the lyrics will not be shown, but you can listen to them without problem.



MUSIC MODE

Music player settings

1. While playing, press the [M] button, to enter the submenu.
2. Use the [⬆] or [⬇] button, and then press the [M] button to select or change a setting.

VIDEO

Store and playback videos to watch and enjoy anywhere!

NOTE: You must convert a video to the correct format before transferring it to the player.

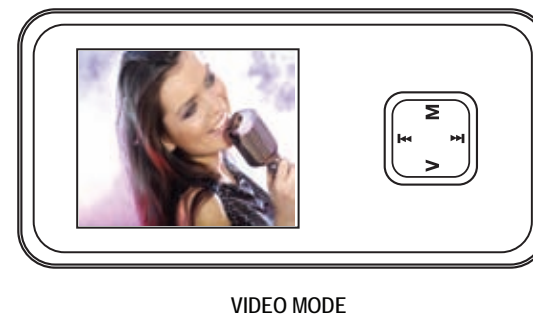
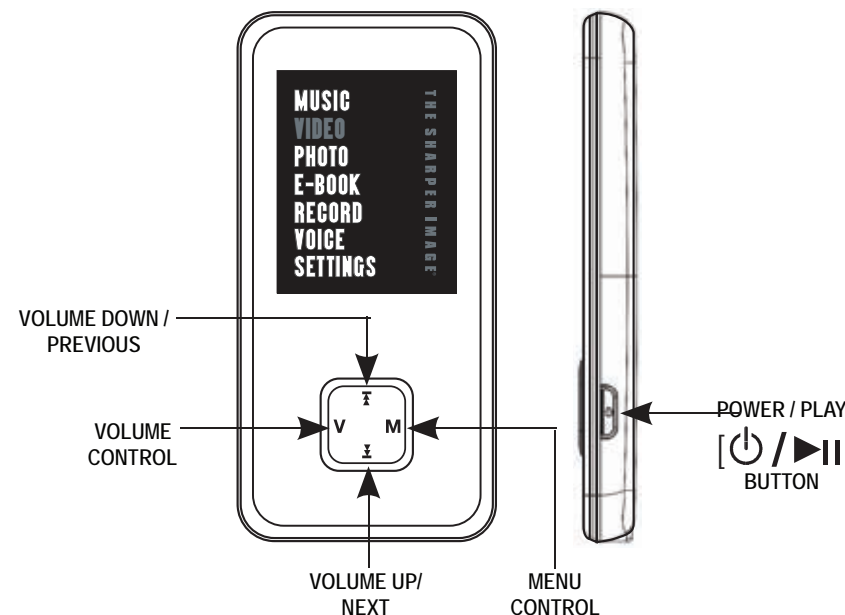
See "CONVERTING VIDEOS" (page 13)

Playing videos

- Select **VIDEO** from the main menu using the [⬆] or [⬇] button, and press the [M] button to enter.
- Use the [⬆] or [⬇] button to select the video file you would like to watch, and press the [M] button to begin playback.
- Press the [⏻ / ▶] button to pause or resume playback.

Searching backward or forward

- Use the [⬆] or [⬇] button to skip to the previous/next video.
- To fast forward or rewind a video, press and **HOLD** the [⬆] or [⬇] button.
- To return to the main menu, press and **HOLD** the [M] button



CONVERTING VIDEOS

Before transferring video files to the MP3 Player, you must convert them to the correct format.

With the Video Converter software tool you can easily convert your videos to the correct format (128 x 128 resolution) so you can enjoy them on your MP3 Player.

To install the Video Converter on your computer follow the steps below:

1. Insert the provided CD to the CD-ROM drive of your computer, and click on "Video Converter".
2. Click "Install" and then "Next".
3. Follow installation instructions to download the converter to your computer.



Click on "Video Converter"

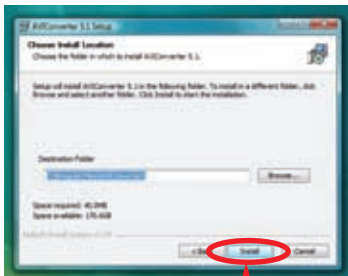


Click "Install"

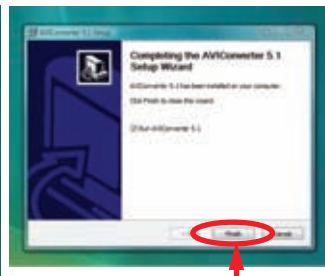


Click "Next"

4. Click "Install" when you see the screen below, and then click "Finish".




Click "Install"

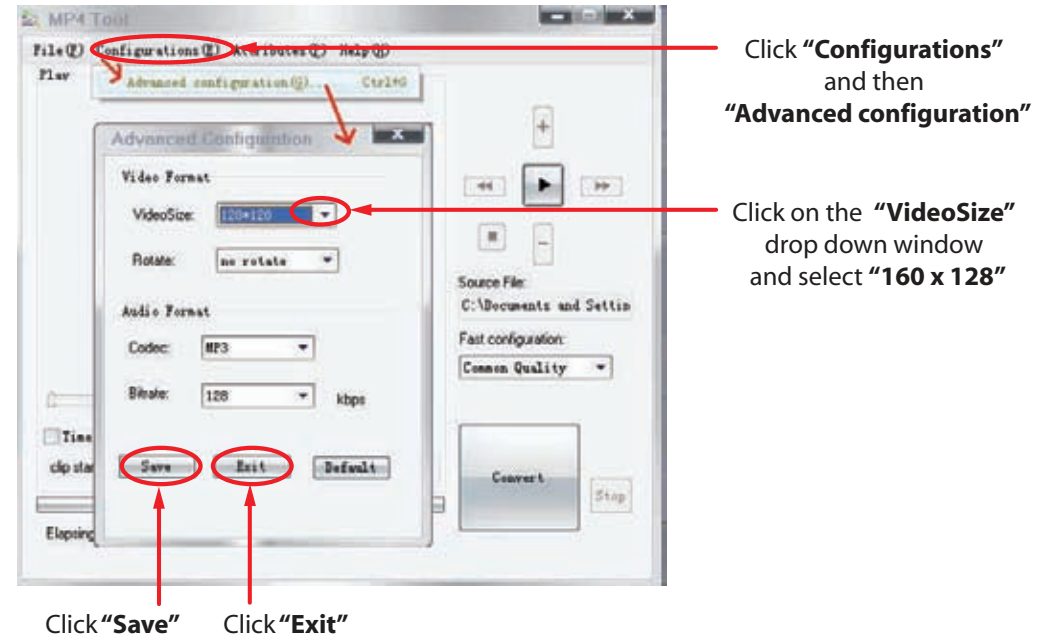
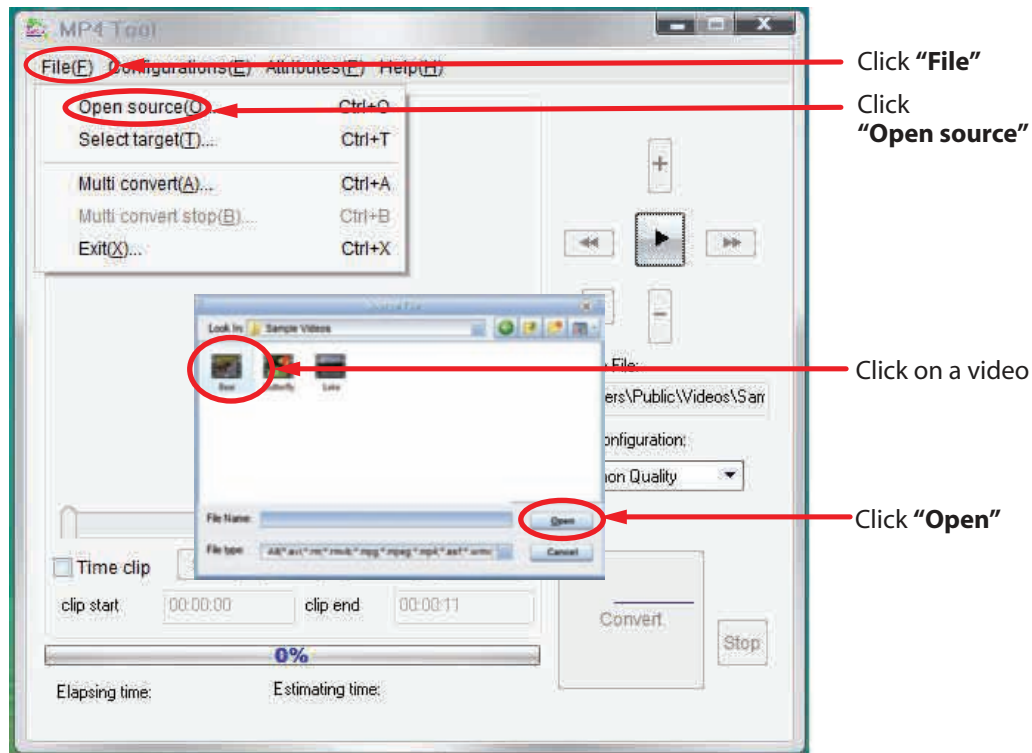


Click "Finish"

5. Click the  icon on your "Desktop" to open the Video Converter.

Converting videos

1. Connect the MP3 Player to the USB port of your computer (optional).
2. Click on "MP4Tool" from the "Start" menu, or the  icon on your desktop.
3. Click on the "Configurations" drop down window, and then "Advanced configuration".
4. Click on the "VideoSize" drop down window and select "160 x 128" resolution.
5. Click "Save", and then click "Exit".

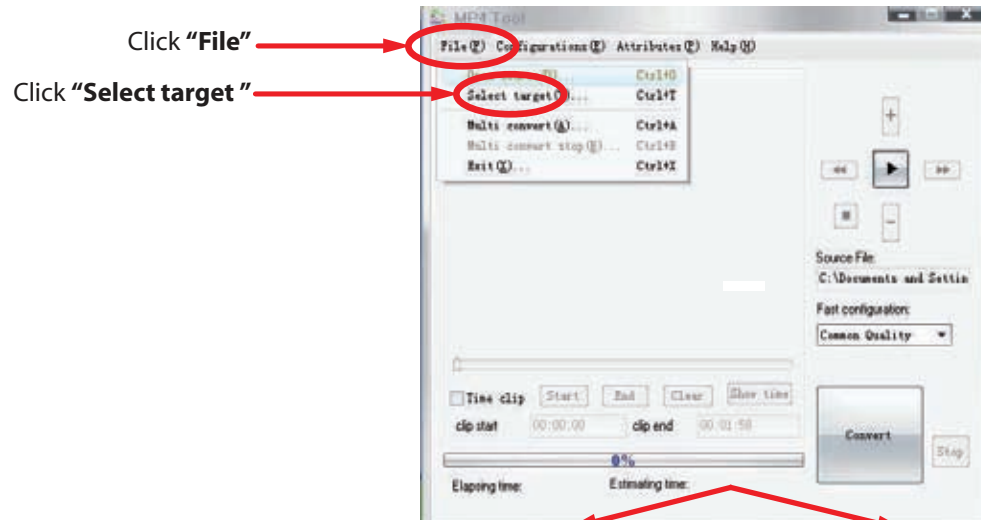


6. Click "File" and then "Open source" to find and select the video you would like to convert.
7. Click on a video and then click "Open".

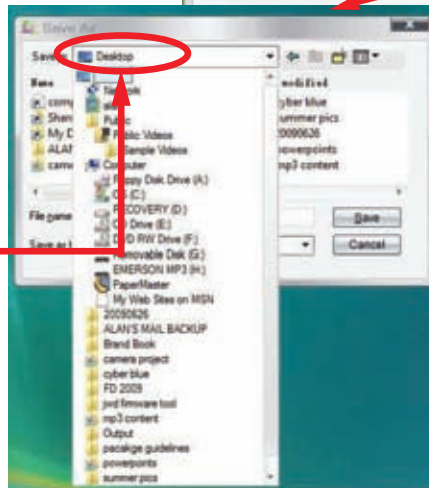
Converting videos

8. Click on "File" and then "Select target" to select the destination for the converted video. You can send it directly to your player by selecting "Sharper MP3", and clicking "OK", or if you would like to save the video to your computer, we recommend sending it to your "Desktop" where you can easily find the video, and transfer it to your player. (See "TRANSFERRING MEDIA FILES TO THE PLAYER" on page 7)

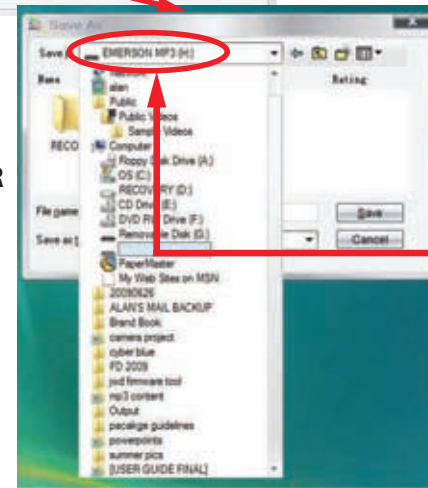
NOTE: To send a converted video directly to your player, it must be connected to the computer's USB port at time of conversion.



Choose "Desktop" and save the converted video to the "Desktop" on your computer. After saving the converted video to your desktop, you can transfer it directly to your player. See "TRANSFERRING MEDIA FILES TO THE PLAYER" (page 7).



OR

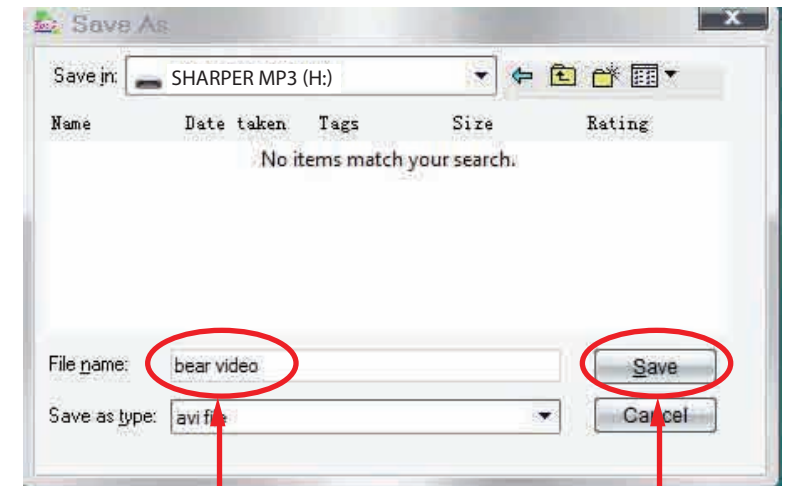


Choose "Sharper MP3" and save the converted video directly to your MP3 Player.

Note: Your MP3 Player must be connected to the USB port of your computer during the conversion for this option.

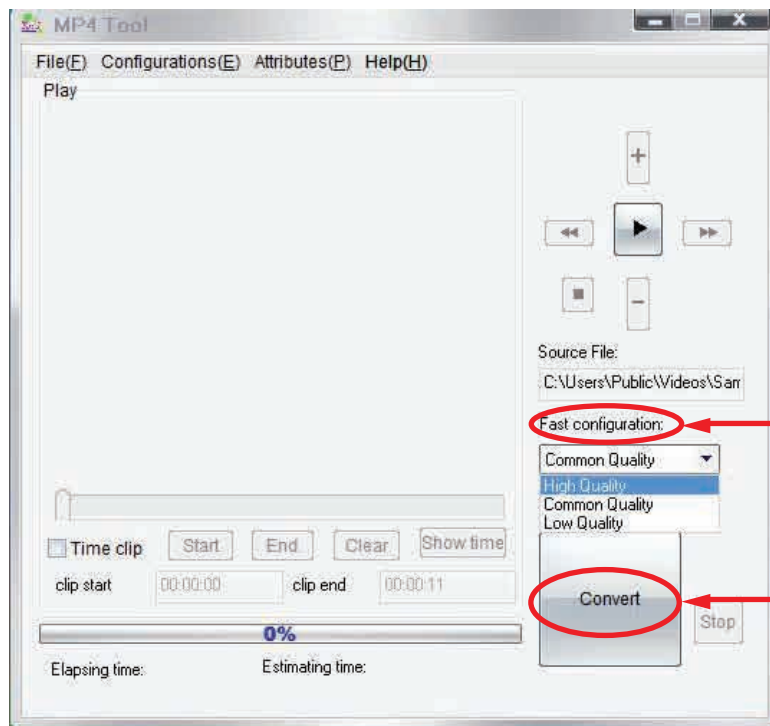
Converting videos

9. Select the name for the file and click **"Save"**.
10. Click on the **"Fast configurator"** drop down window, and choose the image quality of the new video. High quality will use more memory and the output file will be bigger.
11. Click **"Convert"** to start the job queue. If more than one job is present they will be performed sequentially.
12. Once finished, click on **"OK"**, and exit the application.
13. Copy the new converted video file to your player. See **"TRANSFERRING MEDIA FILES TO THE PLAYER"** (page 7).



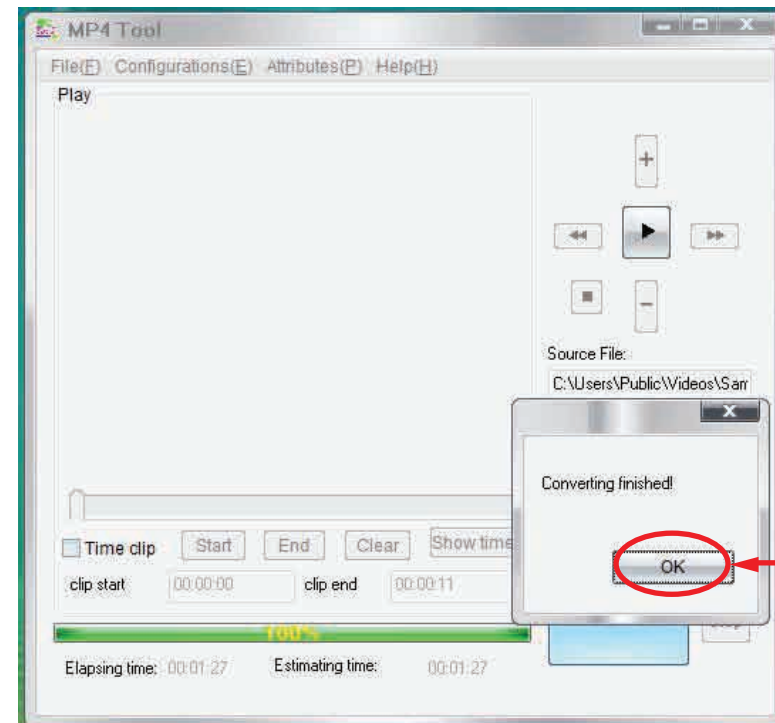
Select the name

Click **"Save"**



Click **"Fast configurator"** and choose the image quality

Click **"Convert"**



Click **"OK"**

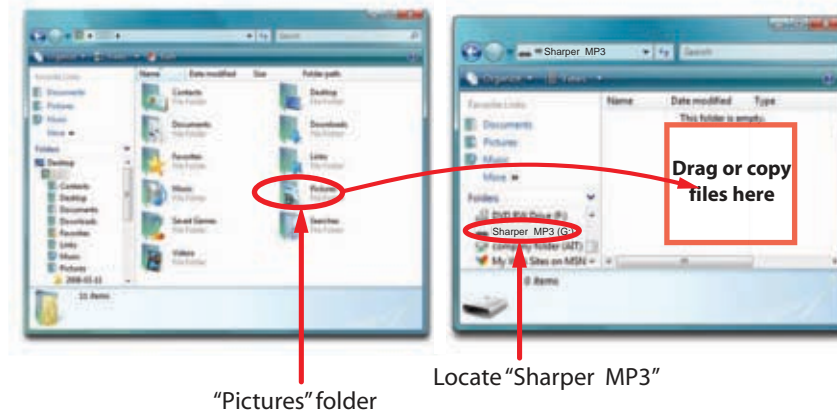
PHOTO

The MP3 Video Player is capable of storing and displaying your favorite pictures.

Downloading pictures to the player

To download pictures from your computer, perform the following steps:

1. Connect the MP3 player to the USB port of your computer.
2. Open "Windows Explorer" or "My Computer", and locate "Sharper MP3".
3. Select the files on your computer, and simply move it into "Sharper MP3" in the usual way (drag-and-drop, copy-and-paste). After copying is completed, the data will be available on the MP3 player.

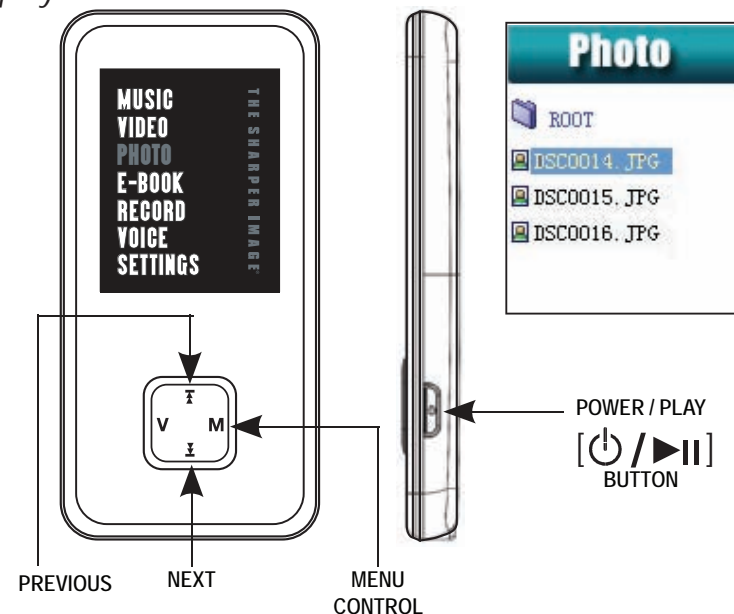


We recommend using **Windows Media Player** to organize and transfer music and pictures to your player. For more information regarding **Windows Media Player**, please refer to the **Quick Start Guide**.

Note: Please do not disconnect the USB cable during loading, it may cause malfunction of the player and the files.

Viewing pictures

- To view your images, select the "PHOTO" option from the main menu. You will access directly to the files explorer and choose the picture that you want with the [▲] or [▼] button and press the [⏻/▶] button to view the picture.
- Use the [▲] or [▼] button to skip to the previous/next picture.
- Press the [M] button to enter the **Photo** submenu: **Local Folder**, **Play set**, **Delete file**, **Delete all**, **Exit**.
- Press the [▲] or [▼] button, and then [M] button to select and change options.



E-BOOK

Viewing TXT files

View and enjoy your electronic books (e-book in TXT format) anywhere with the high resolution LCD screen of your **MP3 video player**. For viewing your e-book, select the “**E-BOOK**” option in the main menu. You will access directly to the files explorer and choose the book that you want with the [▲] or [▼] button and press [⏻/▶] button to view the file.

- **Local folder**

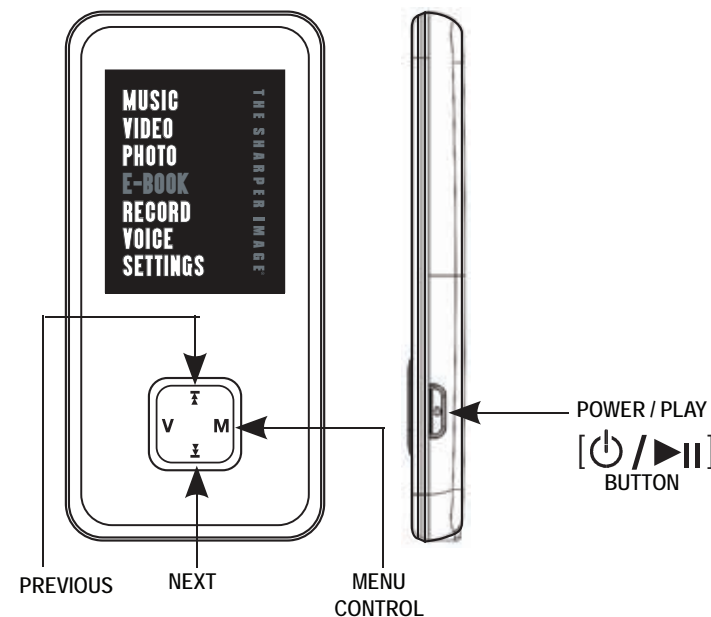
Press the [▲] or [▼] button to select the file, and press the [⏻/▶] button enter **E-book read interface**, then press the [▲] or [▼] button to go to the previous or next page. While in read interface, press the [M] button, you will find the following options: **Bookmark Select, Bookmark Delete, Bookmark Add, and Exit**.

- **Play set**

Manual play - read the file by pressing the [▲] or [▼] button.

Auto play - player will turn page automatically by setting the time.

- **Delete files** - press the [▲] or [▼] button to choose “**YES**” or “**NO**”.
- **Delete all** - press the [▲] or [▼] button to choose “**YES**” or “**NO**”.
- **Exit**



RECORD

Your MP3 video player is able to perform voice recording with its integrated microphone. To enter the voice record mode, select the "RECORD" option and press the [M] button.

Recording

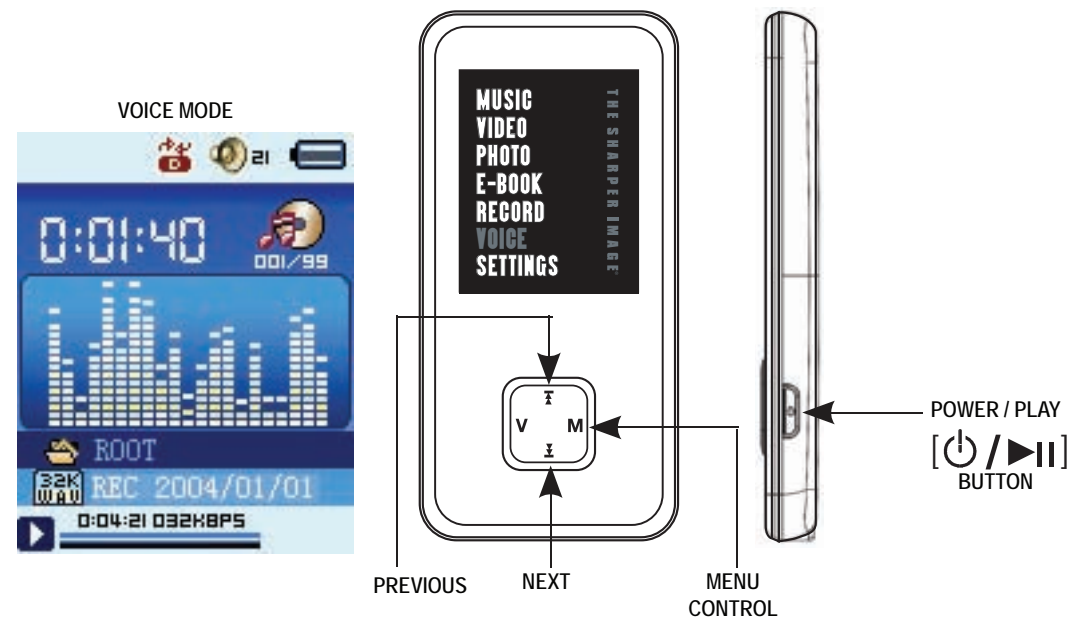
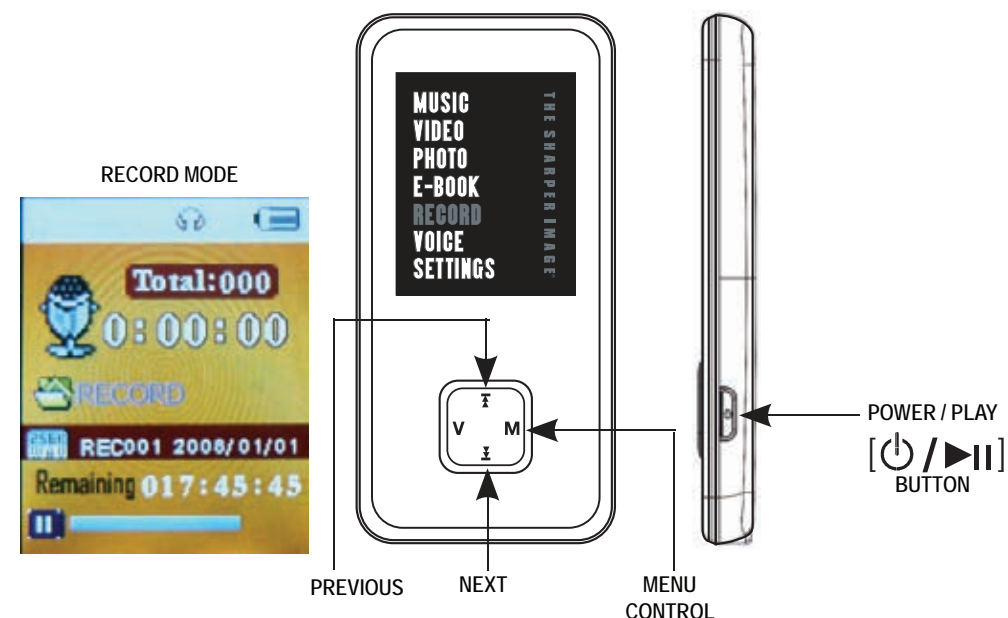
- Press the [⏻/▶] button to start / pause.
- Press and HOLD the [M] button to save.

VOICE

In Voice mode, you can activate the playback your voice recordings. To listen to your voice recordings, select the "VOICE" option from the main menu, and press the [M] button to enter the playing mode interface.

Listening to voice recordings

- Press the [⏻/▶] button to start play recording.
- To select desired recorded file, in stop mode press the [M] button to access the **Local folder**. Press the [M] button once again. Select recorded file by using the [▲] or [▼] button, and then press the [⏻/▶] button.
- To adjust the volume, press the [V] button and then using the [▲] or [▼] button, decrease or increase volume.



SETTINGS

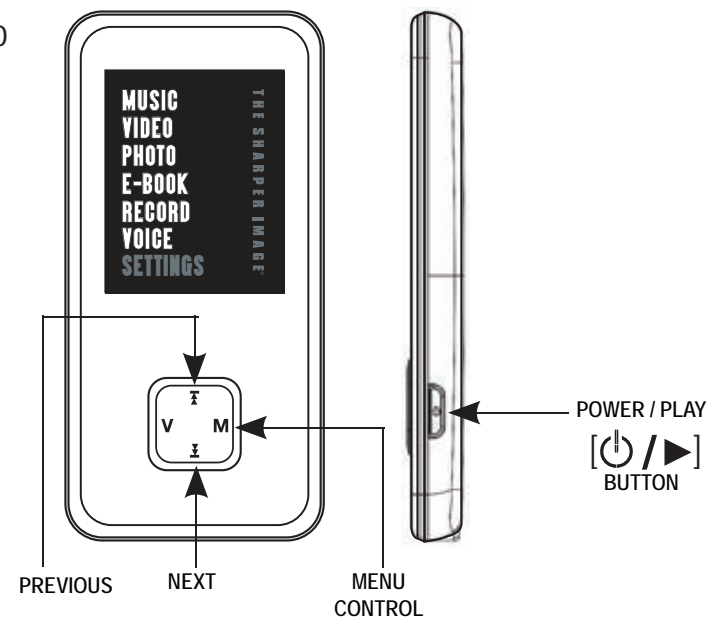
The player's settings can be customized by accessing "SETTINGS" in the main menu. The settings menu consists of several items where various functions can be selected concerning music, power, language, display, recording, system, etc.

Navigating the settings menu

Use the [▲] or [▼] button to select from the following settings options, and press the [M] button to enter.

- System Time
- LCD set
- Language
- Power off
- Replay mode
- Memory Info
- Firmware version
- Firmware upgrade
- Exit

NOTE: Press the [⏻ / ▶] button to exit the menu.



DELETE FILES

- **Directly from the player**

1. In the pause interface, briefly press the [M] button to enter submenus.

2. With the [▲] or [▼] buttons you can select **Delete file** or **Delete all**.

3. Choose the file which you want to delete, and press the [M] button.

4. Using the [▲] or [▼] button, choose "YES" or "NO", and then press the [M] button to confirm.

"Delete all" will delete all corresponding files of the current mode in the current directory (for example: in music mode all music files will be deleted; recorded files will not be deleted).



- **From your computer**

You can easily delete music, picture or video files by connecting your video player to the computer and selecting "Sharper MP3" from Windows Explorer or "My Computer", or click on "Open Folder" to view files from the "Auto play" option window. Simply select the file and delete it as you would delete any other file from your computer.

TROUBLESHOOTING

If you have problems while operating your player, please check the points below before sending it to the service center.

Can not power on

- The battery may be exhausted. Please recharge the battery.

Files can not be downloaded

- Check the connection between the player and PC.

No sound from the earphones

- Please ensure the volume is turned up, and the earphones are properly connected.
- Check if the format of music file is supported by the player.

Can not record

- Check if there is enough memory and battery capacity.

Display is in the wrong language

- Please ensure you selected the correct language from the "SETTINGS" menu.

Player freezes or is not functioning properly

- Press the [Reset] button on the back of MP3 player using the tip of a paper clip or pin.
NOTE: Pressing the [Reset] button will not affect the files stored on the player.

My computer is not detecting the MP3 video player with Windows Vista

- There is a USB mass storage devices recognition issue with Windows Vista acknowledged by Microsoft. A solution is expected in the upcoming Service Pack 1.

I cannot display my .jpg files

- Many digital cameras and image edition software add hidden data to the .jpg files. This data can prevent your MP3 from loading the images. Try to eliminate them by saving the file with another name.

SPECIFICATIONS

Display	1.8" TFT display screen	
Connect with PC	USB 2.0 (HIGH SPEED)	
Built-in memory	2.GB	
Power source	Built-in Lithium battery	
Recording	Sampling rate	8 KHz
	Recording format	WAV (32Kbps/64Kbps)
	Recording time	7 hours (128M Flash)
MP3, WMA, WMV, MAV	Earphone Max output	(L) 5mW+ (R) 5mW (32ohm)
	MP3 bit rate	8Kbps - 320Kbps
	WMA, WMV, NAV bit rate	5Kbps - 384Kbps
	Frequency response	20Hz to 20KHz
Music file format	MP1, MP2, MP3, WMA, WMV, FLAC, WAV	
Video file format	AVI (converted)	
Operating temperature	-5 - 40° C	
Language	English, Spanish, French, German, Italian	
OS	Windows 98/SE/ME/2K/XP/Mac OS 10/Linux 2.4.2	

Remark: subject to change without prior notice

LIMITED WARRANTY

In the unlikely event that this product is defective, or does not perform properly, you may within one (1) year from your original date of purchase return it to the authorized service center for repair or exchange.

TO OBTAIN WARRANTY SERVICE:

- Provide proof of the date of purchase within the package (Dated bill of sale)
- Prepay all shipping costs to the authorized service center, and remember to insure your return.
- Include a return shipping address (no P.O. Boxes), a telephone contact number, and the defective unit within the package.
- Describe the defect or reason you are returning the product.


Your product will be repaired or replaced, at our option, for the same or similar model of equal value if examination by the service center determines this product is defective. Products received damaged as a result of shipping, will require you to file a claim with the carrier.

The shipping address of the authorized service center is:



Southern Telecom Inc.
ATTN: Returns Department
14-C 53rd Street
Brooklyn, NY 11232

Should you have any questions or problems concerning this product, please contact our customer service department at:

 **1-877-768-8483 (Toll Free)**

Monday - Thursday: 9AM - 5PM (EST)

Friday: 9AM - 3PM (EST)

or

via e-mail at

 **cs@southerntelecom.com**

To obtain service after the warranty period, please e-mail cs@southerntelecom.com with product information, date of purchase and nature of the problem. Customer service will reply to the e-mail with service instructions.

Warranty service not provided:

This warranty does not cover damage resulting from accident, misuse, abuse, improper installation or operation, lack of reasonable care, and unauthorized modification. This warranty is voided in the event any unauthorized person opens, alters or repairs this product. All products being returned to the authorized service center for repair must be suitably packaged.

Limitation of Warranty:

- THE WARRANTY STATED ABOVE IS THE ONLY WARRANTY APPLICABLE TO THIS PRODUCT. ALL OTHER WARRANTIES, EXPRESS OR IMPLIED (INCLUDING ALL IMPLIED WARRANTIES OF MERCHANTABILITY OR FITNESS FOR A PARTICULAR PURPOSE) ARE HEREBY DISCLAIMED. NO VERBAL OR WRITTEN INFORMATION GIVEN BY SOUTHERN TELECOM INC. IT'S AGENTS, OR EMPLOYEES SHALL CREATE A WARRANTY OR IN ANY WAY INCREASE THE SCOPE OF THIS WARRANTY.
- REPAIR OR REPLACEMENT AS PROVIDED UNDER THIS WARRANTY IS THE EXCLUSIVE REMEDY OF THE CONSUMER, SOUTHERN TELECOM INC. SHALL NOT BE LIABLE FOR INCIDENTAL OR CONSEQUENTIAL DAMAGES RESULTING FROM THE USE OF THIS PRODUCT OR ARISING OUT OF ANY BREACH OF ANY EXPRESS OR IMPLIED WARRANTY ON THIS PRODUCT. THIS DISCLAIMER OF WARRANTIES AND LIMITED WARRANTY ARE GOVERNED BY THE LAWS OF THE STATE OF NEW YORK. EXCEPT TO THE EXTENT PROHIBITED BY APPLICABLE LAW, ANY IMPLIED WARRANTY OF MERCHANTABILITY OR FITNESS FOR A PARTICULAR PURPOSE ON THIS PRODUCT IS LIMITED TO THE APPLICABLE WARRANTY PERIOD SET FORTH ABOVE.

How state law relates to this warranty:

- Some states do not allow the exclusion nor limitation of incidental, consequential damages, or limitations on how long an implied warranty lasts so the above limitations or exclusion may not apply to you..
- This warranty gives you specific legal rights, and you also may have other rights that vary from state to state.



Customer Support: ☎ 1-877-768-8483 (Toll Free)
✉ cs@southerntelecom.com

Made In China • Designed In the USA
Southern Telecom, Inc. Brooklyn, NY 11232
© 2009 Southern Telecom, Inc. All Rights Reserved.

THE SHARPER IMAGE® name and logo are registered trademarks.
Manufactured and Marketed by Southern Telecom, Inc. under license.
© The Sharper Image. All Rights Reserved.

Microsoft, the Windows logo, and Windows Media are either registered trademarks of Microsoft Corporation
in the United States and / or other countries.

Free Manuals Download Website

<http://myh66.com>

<http://usermanuals.us>

<http://www.somanuals.com>

<http://www.4manuals.cc>

<http://www.manual-lib.com>

<http://www.404manual.com>

<http://www.luxmanual.com>

<http://aubethermostatmanual.com>

Golf course search by state

<http://golfingnear.com>

Email search by domain

<http://emailbydomain.com>

Auto manuals search

<http://auto.somanuals.com>

TV manuals search

<http://tv.somanuals.com>