

Sunbeam

Salon Finish Hot Air Styling System

Instruction Booklet
HS6600

Please read these instructions carefully
and retain for future reference.



Contents

Sunbeam's Safety Precautions	1
Features of your Hot Air Styling System	2
Using your Hot Air Styling System	4
Tips on Styling with the Hot Air Styling System	4
Care and Cleaning	7

تأكد من تفهيم احتياطات السلامة المذكورة اعلاه

請務必理解上述的安全預防措施。

Assurez-vous que les précautions ci-dessus relatives à la sécurité sont bien comprises

Versichern Sie sich daß die obenstehenden Sicherheitsmaßnahmen Verstanden werden

Βεβαιώνετε πως οι παραπάνω προφυλάξεις ασφαλείας γίνονται κατανοητές

Pastikan bahwa tindakan-tindakan keselamatan seperti di atas dimengerti anda

Accertatevi che le suddette norme di sicurezza siano comprese a dovere

上記の注意事項をよくお読みになり、安全を御確認ください

Уверете се дека погоре споменатите мерки на претпазливост се добро разбрани

Asegúrese de que las precauciones de seguridad precedentes sean bien comprendidas

کاری بکنید کہ احتیاطهای بالا حتماً درک بشوند

ต้องแน่ใจว่า ข้อควรระวังเรื่องความปลอดภัยข้างต้น เป็นที่เข้าใจกันดี

Yukarda belirtilen güvenliğin önlemlerinin anlaşıldığından emin olunuz

Xin kiểm chắc rằng những biện pháp làm an toàn kể trên được hiểu rõ

Sunbeam's Safety Precautions

SAFETY PRECAUTIONS FOR YOUR HOT AIR STYLING SYSTEM.

- This hairstyler must not come into contact with water or any other liquid
- Always switch off your hairstyler at the power outlet and remove the plug when not in use
- Do not store your hairstyler near tubs, basins, baths or other vessels containing water or any other liquid
- When the hairstyler is used in the bathroom, unplug it after use as the proximity of water presents a hazard even when the unit is switched off
- Take care to avoid contact with the face and neck when the attachments are hot
- The attachments will get hot. Persons insensitive to heat must take special care.
- Do not put the tong attachment directly onto any surface – use the retractable stand

Sunbeam are very safety conscious when designing and manufacturing consumer products, but it is essential that the product user also exercise care when using an electrical appliance. Listed below are precautions which are essential for the safe use of an electrical appliance:

- Read carefully and save all the instructions provided with an appliance.
- Always turn the power off at the power outlet before you insert or remove a plug. Remove by grasping the plug - do not pull on the cord.
- Turn the power off and remove the plug when the appliance is not in use and before cleaning.
- Do not use your appliance with an extension cord unless this cord has been checked and tested by a qualified technician or service person.
- Always use your appliance from a power outlet of the voltage (A.C. only) marked on the appliance.
- Close supervision is necessary when your appliance is being used near children or infirm persons.
- Never leave an appliance unattended while in use.
- Young children should be supervised to ensure that they do not play with the appliance.
- Do not use an appliance for any purpose other than its intended use.
- Do not place an appliance on or near a hot gas flame, electric element or on a heated oven. Do not place on top of any other appliance.
- Do not let the power cord of an appliance hang over the edge of a table or bench top or touch any hot surface.
- For safety reasons and to avoid maintenance by unskilled persons, some appliances are 'sealed' using tamperproof screws. Such appliances should always be returned to the nearest Sunbeam Appointed Service Centre for adjustment or repair if required.
- Do not operate any electrical appliance with a damaged cord or after the appliance has been dropped or damaged in any manner. If damage is suspected, return the appliance to the nearest Sunbeam Appointed Service Centre for examination, repair or adjustment.
- For additional protection, Sunbeam recommend the use of a residual current device (RCD) with a tripping current not exceeding 30mA in the electrical circuit supplying power to your appliances.
- Do not immerse the appliance in water or any other liquid unless recommended.

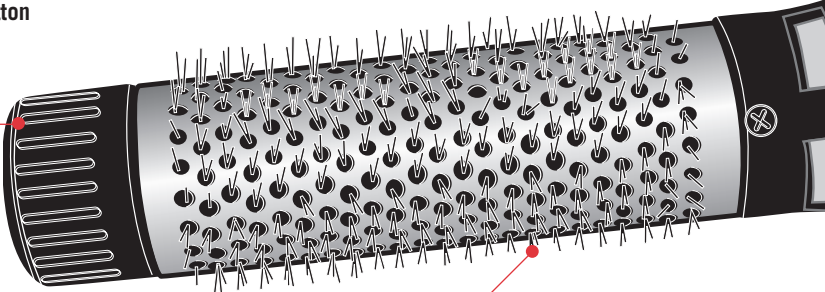
If you have any concerns regarding the performance and use of your appliance, please visit www.sunbeam.com.au or contact the Sunbeam Consumer Service Line. Ensure the above safety precautions are understood.

Features of your Hot Air Styling System

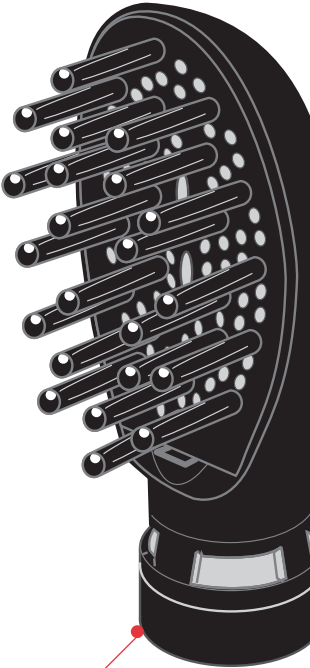
1000W of power

Attachment release button

Retractable
bristle switch

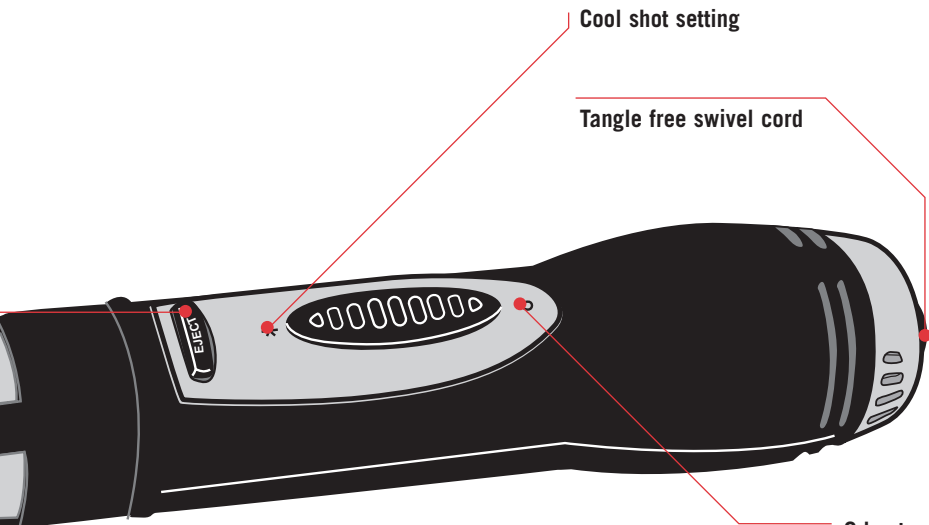


Retractable bristle thermal brush



Diffuser

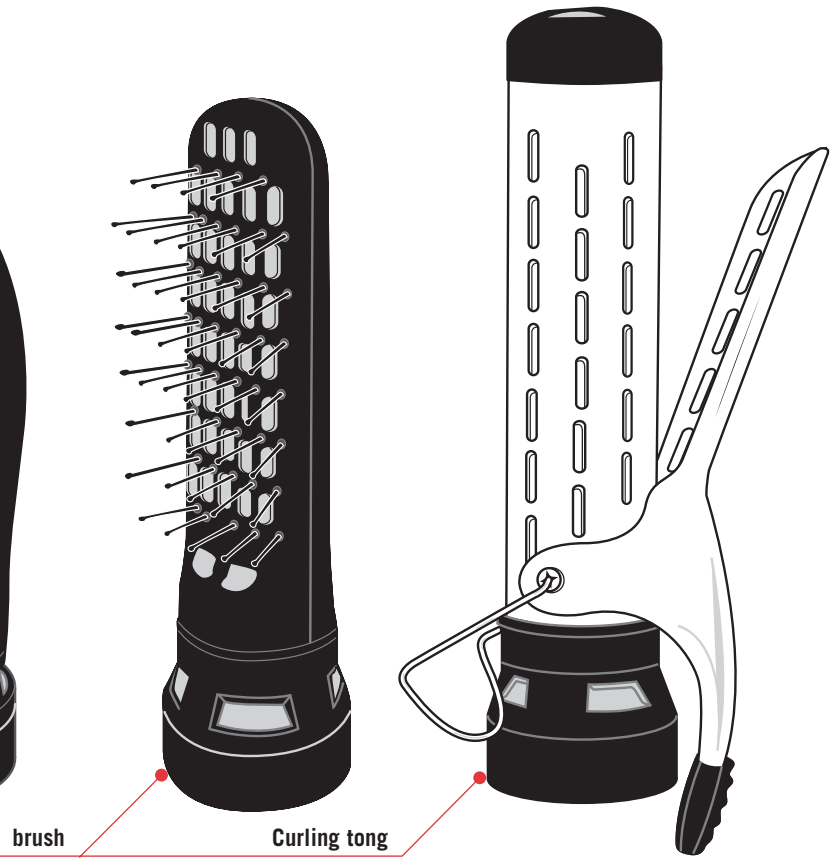
Vent



Cool shot setting

Tangle free swivel cord

2 heat settings
(high & low)



brush

Curling tong

Using your Hot Air Styling System

- Insert the plug into a 230-240 volt power outlet and turn the power on
 - Blot hair dry – do not use the appliance on hair which is dripping wet
 - To fit attachments, simply click into place
To remove, press the attachment release switch and pull the attachment off
 - Use the cool shot after styling to set the look
-

Tips on Styling with the Hot Air Styling System

- As a guide use the High setting for rough drying and on thick hair. Use the Low setting when styling or on finer hair
- Blot your hair with a towel rather than rubbing it. Rubbing can disturb the cuticle and deplete the shine

Tips on styling with the Diffuser

1. Shampoo and towel dry your hair. If it needs to be detangled brush it through prior to shampooing rather than combing it after. This will help to enhance any natural waves or curls by allowing it to clump together in its natural sections.
2. Apply a curl enhancing product such as Be Bent from PPS which kicks moisture and bounce into the curl. The amount you use

depends on how much hair you have and you will be able to work this out the more you style your hair yourself. As a general rule, use less than you think. Too little will result in a shape that won't last as long or be as curly as you wanted, too much will leave the hair sticky and hard to work with.

When applying any product to your hair always pop it into your hands first then work it around them. This will spread the product so that as you put it into the hair, you won't get patches of too much.

Another way to prevent patches is to dab the product over the hair, applying small amounts all over the place. As less is left on your hands, work more firmly to remove the last bits.

Tips on Styling with the Hot Air Styling System continued

3. On the Low setting, start with the underneath of your hair and work towards the top as this area always dries out first and will go frizzy with this type of look if over-dried.
 6. Hang your head from one side to the other or tip upside down for more lift/volume.
 7. With longer hair, allow it to sit within the diffuser by almost gathering your hair into it in a circling motion from the ends moving towards the scalp. With shorter hair simply hold the diffuser over the head.
 8. The real trick now is not to touch your hair. You may place your fingers in at the scalp to lift the hair away a little to give more volume or to hold the curl gently in place if your natural wave is very slight. Besides that don't touch!
 9. Finally, leave a little moisture in the hair at the end and allow this to dry out without the styler. This will help prevent an attack of the "frizzies". Only when the hair is totally dry (give it about 1/2 an hour) can you shake your fingers through your hair to loosen the curl out and then shape to style.
- Curl close to the root, rather than rolling hair, the traditional way, up from the bottom. (*Caution: Don't place the iron so close to the scalp that you burn yourself*)
 - For a spiral look to your curls twist the section of hair before wrapping it around the roller.
 - For a wave, use the tongs across the hair and don't roll hair around them at all. Repeat down the hair inserting the tongs in opposite directions to create the in and outward curve of the wave.
 - After curling use a little bit of gel or oil and your fingers to loosen up too-tight curls. Tight ringlets or the "Shirley Temple" is not what you are after unless you want your hair to look too set or old-fashioned

Tips on Styling with Tongs

- For added volume on fine hair begin by spraying a volumiser in at the roots before you dry off.
- Make sure hair is 100% dry before you begin to tong it.
- To get the look to last longer, spray each section of hair with hairspray before you curl it.

Tips on styling with the vent brush

- The vent brush is used to create root lift and volume for your hair and to give some direction and movement and is a great attachment for easing out tangles on medium to thick hair or to give a little more height and lift to a style that you might normally dry with your fingers
- Use it to smooth out hair working on one section at a time
- As the hair dries, use the vent brush attachment to flick out hair to encourage lift and movement

Tips on styling with the retractable bristle thermal brush

- The round brush describes itself but the most important thing to realise about it is that it's not just for creating curl. The more open bristle type is used for achieving maximum height and lift. The densely packed bristle round brush is great at smoothing and straightening your hair with the tension needed for hair that naturally has a wave or curl.
- Wind a small section of hair onto the brush, hold for a few seconds before releasing the curl. Do this by twisting the brush so that that the bristles retract allowing you to gently remove the styler with the risk of tangling your hair in the bristles
- Repeat on each hair section. When cool, brush through for a soft finish and set with light finishing spray such as Gloss and Fix from PPS



Tips courtesy of hair care expert Gabrielle McCarthy and www.virtualhaircare.com, the place to find out everything there is to know about hair, from the latest looks to medical conditions of the hair and scalp.

Care and Cleaning

- After use, remove the plug from the power outlet and allow the hairstyler to cool before storing
- To clean the attachments, wipe with a soft cloth moistened with a solution of a small amount of shampoo and warm water.
- Wipe the handle of the hairstyler with a damp cloth and dry with a soft cloth
- Do not wrap the cord around the hairstyler when not in use
- Store in a dry place

Help Line

If you have any additional questions about using the Hot Air Styling System, please call the Sunbeam help line in Australia on 1800 025 059. In New Zealand, please call 09 912 0747

'Sunbeam', is a registered trademark of Sunbeam Corporation.

Made in China. Due to minor changes in design or otherwise, the product may differ from the one shown in this leaflet. Backed by Sunbeam's 2 year Replacement Guarantee and National Service Network.

© Copyright. SUNBEAM CORPORATION LIMITED 2003.

(INCORPORATED IN N.S.W.) A.C.N. 000 006 771

Sunbeam Corporation is a division of GUD Holdings Ltd.

For more information or advice on this or any other Sunbeam appliance, visit www.sunbeam.com.au or contact the Sunbeam Consumer Service Line.

Australia 1800 025 059

New Zealand (09) 912 0747.



Consumer Hotline


Australia

1800 025 059

New Zealand

(09) 912 0747

www.sunbeam.com.au

 is a registered Trademark of Sunbeam Corporation Limited. ACN 000 006 771.

© Sunbeam Corporation Limited 2003.

Download from Www.Somanuals.com. All Manuals Search And Download.

Free Manuals Download Website

<http://myh66.com>

<http://usermanuals.us>

<http://www.somanuals.com>

<http://www.4manuals.cc>

<http://www.manual-lib.com>

<http://www.404manual.com>

<http://www.luxmanual.com>

<http://aubethermostatmanual.com>

Golf course search by state

<http://golfingnear.com>

Email search by domain

<http://emailbydomain.com>

Auto manuals search

<http://auto.somanuals.com>

TV manuals search

<http://tv.somanuals.com>