

**USB
10/100M
FAST ETHERNET**

Quick Installation Guide

REGULATORY STATEMENTS

FCC Certification

Part 15, Class B

The United States Federal Communication Commission (FCC) and the Canadian Department of Communications have established certain rules governing the use of electronic equipment.

FCC Part 15 Registration

This device complies with Part 15 of FCC rules. Operation is subject to the following two conditions:

1. This device may not cause harmful interface, and
2. This device must accept any interface received, including interface that may cause undesired operation. This equipment has been tested and found to comply with the limits for a Class B digital device, pursuant to Part 15 of the FCC Rules. These limits are designed to provide reasonable protection against harmful interference in a residential installation. This equipment generates, uses and can radiate radio frequency energy, and if not installed and used in accordance with the instructions, may cause harmful interference to radio communications. However, there is no guarantee that interference will not occur in a particular installation. If this equipment does cause harmful interference to radio or television reception, which can be determined by turning off and on, the user is encouraged to try to correct the interference by one or more of the following measures:
 - Reorient or relocate the receiving antenna.
 - Increase the distance between the equipment and receiver.
 - Connect the equipment into an outlet on a circuit different from that to which the receiver is connected.

INTRODUCTIONS

The USB 10/100M Fast Ethernet Adapter provides outside-the-box plug-and-play local area network connections for USB-enabled PCs, notebooks and laptops. This adapter uses a B type USB port to connect with the USB host, and an RJ-45 port to connect with a 10/100 Fast Ethernet LAN link. Installation is easy and no external power is required! The network sharing is easier than ever.

Specifications

Network standard

- IEEE 802.3 for 10BaseT
- IEEE 802.3u for 100BaseTX

Data Rate

- 10/100 Mbps¹
- Double data transfer rate in full duplex mode

Supported operating systems

- Windows 98/2000/ME/XP

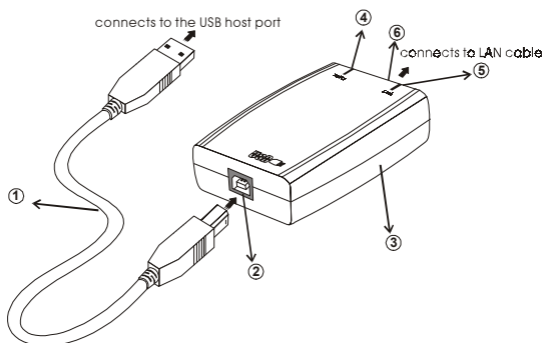
Physical

- Ports: 1 RJ-45, 1 USB B-Type
- LED indicators: Link, Transmit/Receive
- Dimensions: 2.7" x 2" x 1" (LxWxH)

¹ CAT5 cable is required for 100M data transfer rate

Parts Names and Functions

- ① **USB Connection Cable:** connects the USB host port to the USB 10/100M Fast Ethernet Adapter.



- ② **USB-B Port:** USB device port.

③ **USB Fast Ethernet Adapter**

- ④ **Rx/Tx LED indicator:** blinks green when the Fast Ethernet Adapter is transmitting/receiving data.

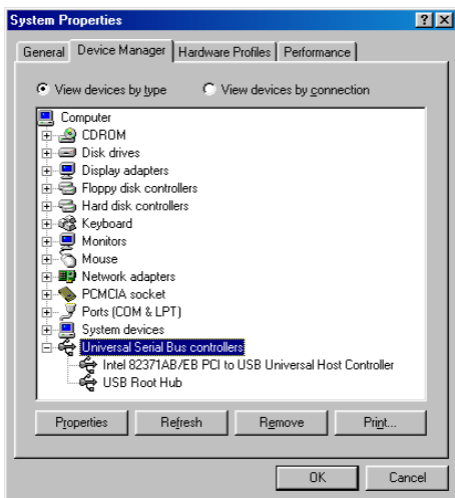
- ⑤ **Link LED indicator:** glows green when 100M Network is linked; when glows amber, then 10M Network is linked.

- ⑥ **Network Port:** connects the Fast Ethernet Adapter to the HUB with the LAN cable.

HARDWARE INSTALLATION

Precaution

*Before the installation, make sure the USB port exists in your computer and is enabled. To check this, go to **My Computer** → **Control Panel** → **System**. Open the Device Manager tab. If the **Universal Serial Bus controller** device is found, it means your USB port is installed and enabled. If not, either no USB port is installed or the USB bios is not properly enabled. In this case, consult your computer dealer for USB support.*



Getting Hooked Up

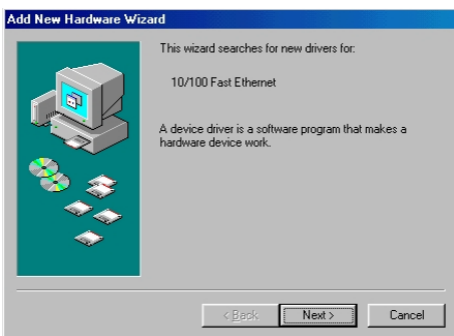
1. Locate the USB host port of your system. Align the USB connector toward the USB host port, push evenly and steadily until it is seated.

2. Connect another end of the USB connection cable to the device port (**USB B**) of your USB 10/100M Fast Ethernet Adapter until it clicks.
3. Connect the UTP cable to the Fast Ethernet Adapter.
4. Connect the other end to a Hub.

SOFTWARE INSTALLATION

Installation for Windows 98

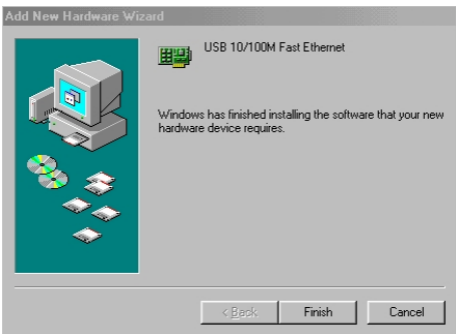
1. Once the device is properly connected to your computer, Windows 98 will automatically detect the new hardware device. Perform the following procedures for installing the device driver.



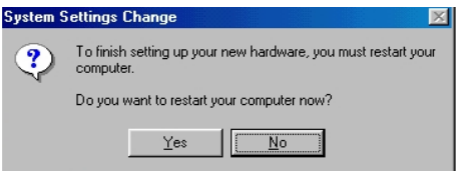
2. Insert the device driver disk into your floppy drive. When the above figure appears, click **Next**.



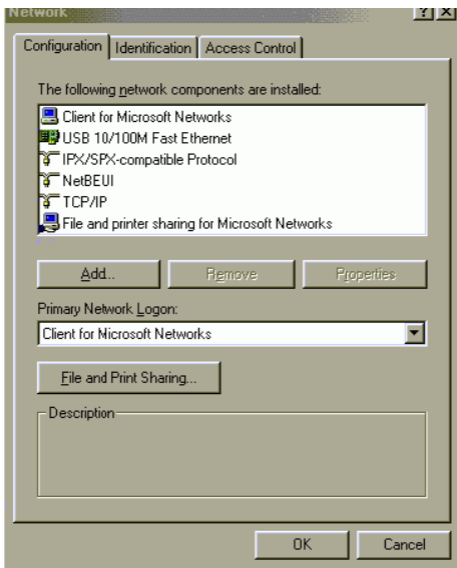
3. The installation program will proceed automatically. Follow the on-screen instruction to finish.



4. When Windows prompts you to restart your computer, click **No** to make some changes to your network settings.



5. Go to **Start** → **Settings** → **Control Panel**. Double-click **Network**.

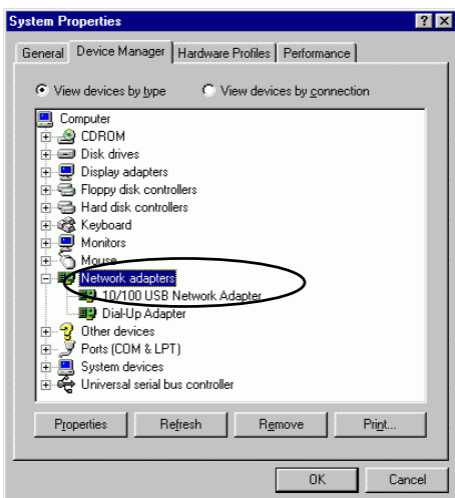


6. When the Network dialog box appears, select **USB 10/100M Fast Ethernet** and click **Add**. Set the appropriate protocols and client for you needs. When completed, click **OK**.
7. Remember to restart your computer to activate the new device

Setup Diagnostics

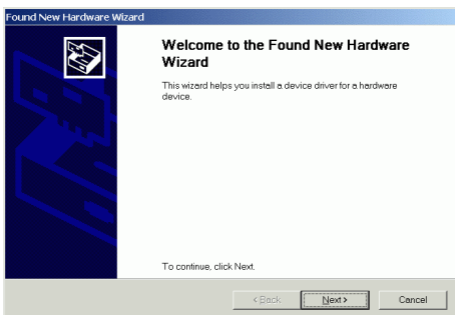
To verify if the device exists in your computer and is enabled, go to **Start** → **Settings** → **Control Panel** → **System**. Click the **Device Manager** tab. If the **10/100 USB Network**

Adapter is found, it means that your device is properly installed and enabled.

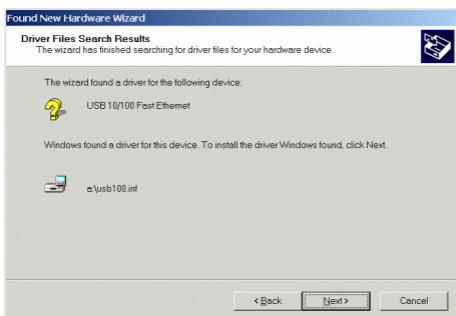


Installation for Windows 2000

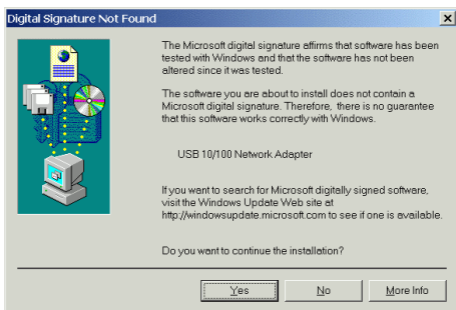
1. Once the device is well connected to your computer, Windows 2000 will automatically detect the new device. Click **Next** to proceed.



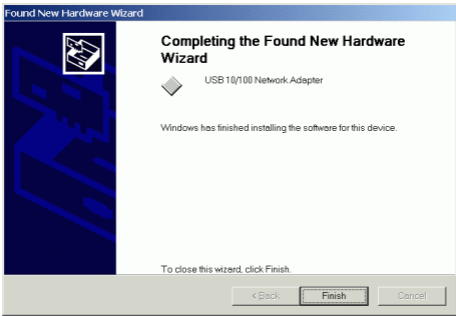
2. Select **Search for a suitable driver for my device (recommended)** and click **Next**.
3. Insert the new device driver to the disk drive. Select **Floppy disk drives**. Click **Next**.
4. Click **Next**. Windows will copy all the necessary files to your system.



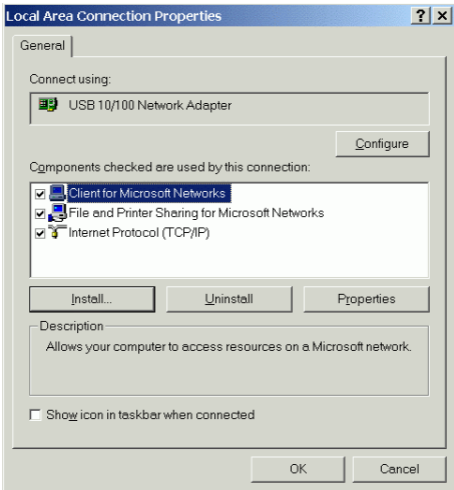
5. Click **Yes** to continue.



6. Click **Finish** to complete the software installation.



7. Go to **Start** → **Settings** → **Control Panel** → **Network and Dial-up Connections**. Double-click **Local Area Connections**.

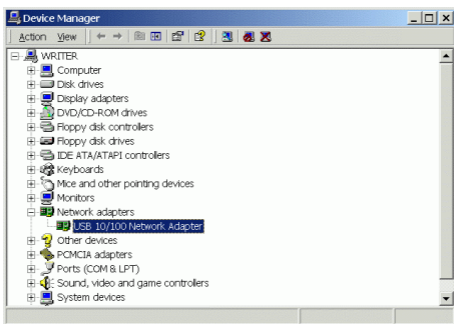


8. When the Network dialog box appears, select **USB 10/100 Network Adapter** and click **Install**. Set the appropriate protocols and client for you needs. When completed, click **OK**.

- Remember to restart your computer to activate the new device.

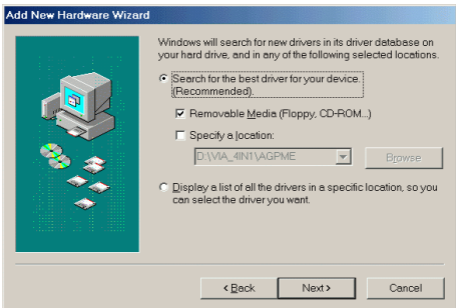
Setup Diagnostics

To verify if the device exists in your computer and is enabled, go to **Start → Settings → Control Panel → System → Hardware**. Click the **Device Manager** tab. If the **USB 10/100 Network Adapter** is found, it means that your device is properly installed and enabled.

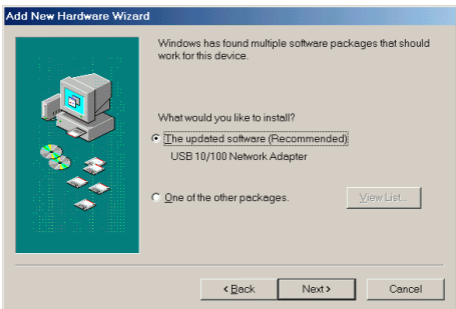


Installation for Windows ME

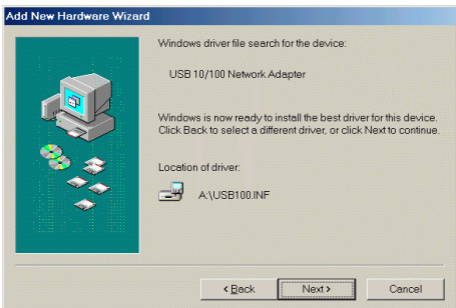
- Once the device is well connected to your computer, Windows ME will automatically detect the new device. Select **Specify the location of the driver (Advanced)** and click **Next**.
- Insert the device driver disk into the floppy disk drive on your system. Select **Removable Media (Floppy, CD-ROM...)** and click **Next** to continue.



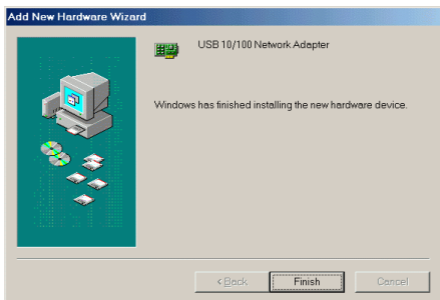
3. Click **Next** to continue.



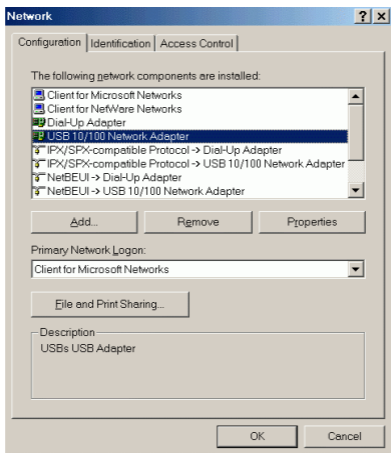
4. Click **Next**. Windows will copy all the necessary files to your system.



5. Click **Finish** to complete the software installation.



6. When asked if you want to restart your computer, click **No** to continue the Network configuration.
7. Go to **Start** → **Settings** → **Control Panel**. Double-click **Network**.



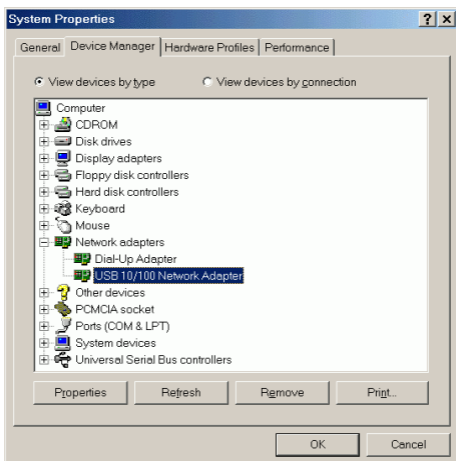
8. When the Network dialog box appears, select **USB 10/100 Network Adapter** and

click **Add**. Set the appropriate protocols and client for you needs. When completed, click **OK**.

- Remember to restart your computer to activate the new device.

Setup Diagnostics

To verify if the device exists in your computer and is enabled, go to **Start** → **Settings** → **Control Panel** → **System**. Click the **Device Manager** tab. If the **USB 10/100 Network Adapter** is found, it means that your device is properly installed and enabled.

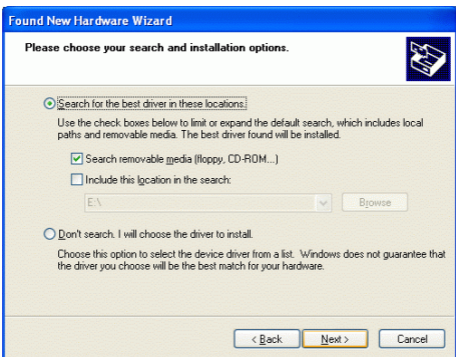


Installation for Windows XP

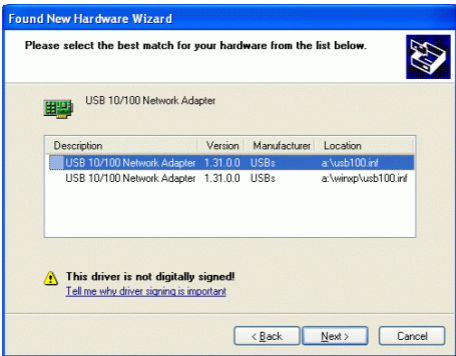
- Once the device is well connected, Windows will detect the new device and prompt you to insert the network device driver. Click **Install from a list or specific location...** and click **next**.



2. Insert the device **Driver Disk** into the floppy disk drive of your system. Select **Search removable media (floppy, CD-ROM...)** and click **Next**.



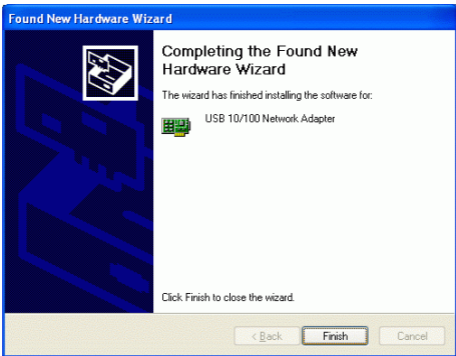
3. Click **Next** to continue.



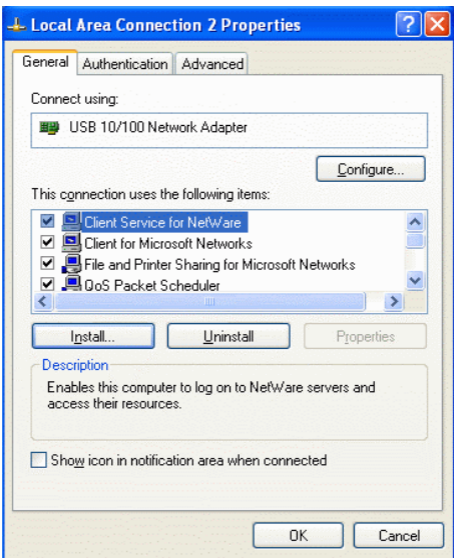
- Windows will start searching for the appropriate driver for the installation. When the screen appears as below, click **Continue Anyway** to proceed.



- Wait for seconds while Windows copies the appropriate driver to your system.
- Click **Finish**. The software installation for this network device is now completed.



7. Go to **Start** → **Settings** → **Control Panel** → **Network and Dial-up Connections**. Double-click **Local Area Connections**.



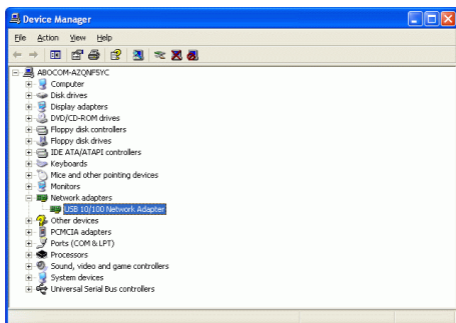
8. When the Network dialog box appears, select **USB 10/100 Network Adapter** and

click **Install**. Set the appropriate protocols and client for you needs. When completed, click **OK**.

9. Remember to restart your computer to activate the new device.

Setup Diagnostics

To verify if the device exists in your computer and is enabled, go to **Start → Control Panel → System**. Click the **Device Manager** tab. If the **USB 10/100 Network Adapter** is found, it means that your device is properly installed and enabled.



Free Manuals Download Website

<http://myh66.com>

<http://usermanuals.us>

<http://www.somanuals.com>

<http://www.4manuals.cc>

<http://www.manual-lib.com>

<http://www.404manual.com>

<http://www.luxmanual.com>

<http://aubethermostatmanual.com>

Golf course search by state

<http://golfingnear.com>

Email search by domain

<http://emailbydomain.com>

Auto manuals search

<http://auto.somanuals.com>

TV manuals search

<http://tv.somanuals.com>