



PLAR32

UPA 200Mbps 802.11b/g AP/Router

- One powerline port
- Two 10/100Mbps Ethernet ports

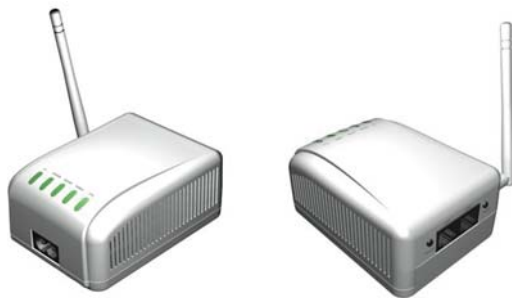
Description

The PLAR32 provides convenient **3-way Ethernet /powerline /WLAN access** to office/family users by sharing a simple AC power line network, and a wireless AP. Embedded UPA DHS interface enables you to connect one PC ethernet port to another PC's at other end of power line, and not limited by the wall or layer that block RF wireless communication. The wireless AP can provide you a convenient portable data access via Radio Frequency among your room. Further we provide you a ethernet Router with two 10/100Mbps ports for your ethernet extension or Gateway/Router application.

Features

- One powerline port
- Two 10/100Mbps Ethernet ports
- One button security
- Three levels throughput indication

Product outlook



Specification

Main Chipset	Atheros AR2317 +DS2 DSS9101/DSS7800 + Realtek RTL8306
Standard support	UPA DHS (200 Mbps) PLC, IEEE802.3 & 802.3u, 802.11b & 11g.
Interface	One AC powerline port, two 10/100Mbps Ethernet Ports. One security button, one factory-reset button.
Security	3DES 168 bits/ AES 128 bits/ AES 256 bits encryption
Software Feature	IP Routing support, Bridge support, Client support, IP Security, Network Management, Self-Diagnostics Capabilities, Wireless LAN configuration-included WPS/WPA/WEP support, WAN Interface.
Power	AC 100~240V/ 50~60Hz/ 0.15A; 9.5W max.(EU/UK type), 7.5W max.(US type)
Dimension (W x D x L)	103.3 mm x 46 mm x 74.95 mm(107.04mm with Antenna)
LED	<p>PWR/AP: Red & Green Green On: Power On and Powerline-EP mode, Orange On: Powerline-AP mode, Orange-Green Blinking: Security setup mode. Off: Power Off.</p> <p>PLC/SPD: Red & Green Green On: Powerline Link speed over 12Mbps, Orange On: Powerline Link speed between 12Mbps and 6Mbps, Red On: Powerline Link speed under 6Mbps, Blink: Powerline in Activity. Off: Powerline No-link.</p> <p>LAN (1-2): Yellow-Green On: Link Blink: LAN in Activity. Off: No-Link</p> <p>Wireless : Yellow-Green On: Wireless is Ready. Off: Wireless is not Ready.</p>
Powerline connection range	Up to 300 Meters
Operating	Operating Temperature: 0~40°C (32~104°F) Relative Humidity: 10%~90% non-condensing
Storage	Temperature: -10~70°C (14~158°F) Relevant Humidity: 5%~95% non-condensing
CERTIFICATIONS	FCC Part 15B & 15C, Class B; CE Class B (EN55022/EN55024) UL 60950-1(option), CB (option).

Free Manuals Download Website

<http://myh66.com>

<http://usermanuals.us>

<http://www.somanuals.com>

<http://www.4manuals.cc>

<http://www.manual-lib.com>

<http://www.404manual.com>

<http://www.luxmanual.com>

<http://aubethermostatmanual.com>

Golf course search by state

<http://golfingnear.com>

Email search by domain

<http://emailbydomain.com>

Auto manuals search

<http://auto.somanuals.com>

TV manuals search

<http://tv.somanuals.com>