

**HAMPTON™ 5' INTEGRAL APRON WHIRLPOOL**

- 2425.218W Whirlpool featuring System I Left Hand Drain Outlet**
- 2425.118W Whirlpool featuring System I Right Hand Drain Outlet**
  - Acrylic with fiberglass reinforcement
  - Integral apron with removable access panel
  - Integral three-sided, tiling / water retention flange
  - Form-fitted backrest
  - 1.5 HP single speed, self-draining pump/motor with dry run seal
  - Factory-installed power cord with plug
  - Eight multi-directional and flow-adjustable jets including:
    - Two Ideal-flow jets
    - Four body massage jets
    - Two recessed back-rest jets
  - Deck-mounted air switch On/Off
  - Two silent air volume controls
  - Quick Connect Safe-T-Heater connection system
  - Factory installed and tested whirlpool system

**StayClean™ Whirlpool Massage featuring System I**

- 2425.218WC Whirlpool featuring System I Left Hand Drain Outlet**
- 2425.118WC Whirlpool featuring System I Right Hand Drain Outlet**
  - Same as above except with the StayClean™ whirlpool system featuring Antimicrobial AlphaSan®

Nominal Dimensions:  
60" x 32" x 21-1/2" (1524 x 813 x 546mm)



**To Be Specified - Required:**

- Color:
- Bath Faucet: (specify finish)
- Bath Drain: 1583.470 (specify finish)

**To Be Specified - Optional:**

- Safe-T-Heater\*: 9075.120
- Bath Caddy: 9533.100 (in Chrome only)
- Jet Trim Ring Kit: 9860.200-two per kit (specify finish)

For color/finish availability and other faucet choices, please see the Product Selector and Pricing Guide.

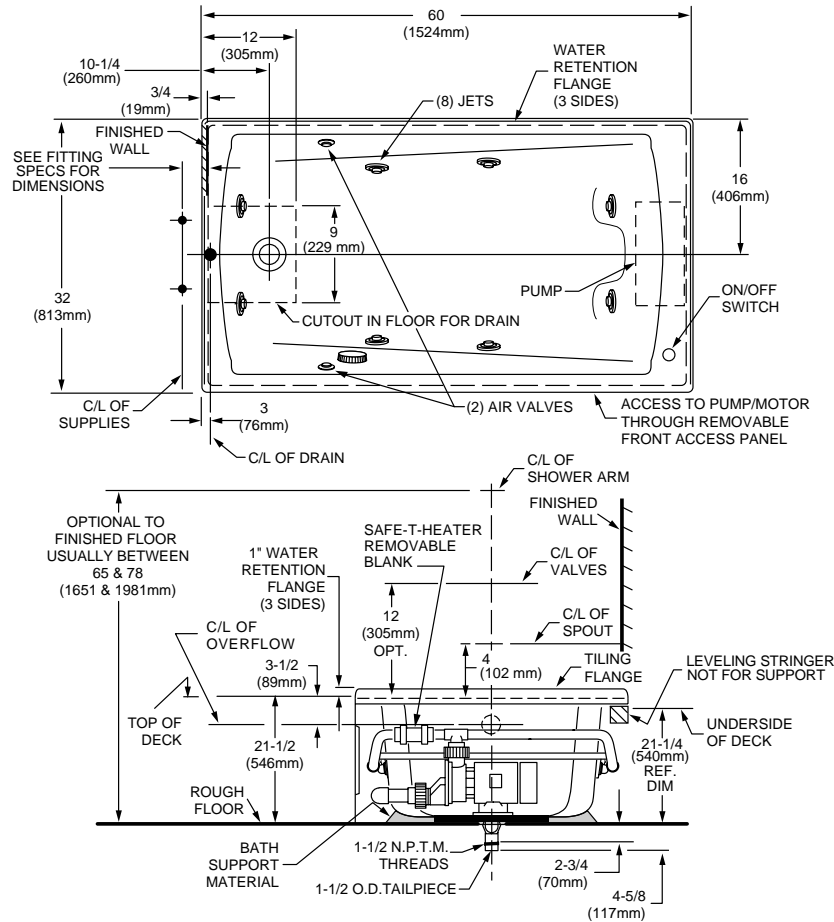
\* **NOTE:** the Safe-T-Heater is designed to maintain water temperature during operation. It will not heat cold water to desired bathing temperature.

**Compliance Certifications -**

**Meets or Exceeds the Following Specifications:**

- Underwriters Laboratories - Hydromassage Bathtubs UL 1795
- ASME A112.19.7M for Whirlpool Appliances
- ANSI Z124.1 for Plastic Bathtubs
- ASTM E162 for Flammability
- NFPA 258 for Smoke Density

**NOTE:** Roughing-in dimensions and product specifications shown on reverse side of page.



GENERAL SPECIFICATIONS FOR 2425 WHIRLPOOL	
INSTALLED SIZE	60 X 32 X 21-1/2in. (1524 X 813 X 546mm)
WEIGHT	115 Lbs. (52 Kg.)
WEIGHT w/WATER	574 Lbs. (258 Kg.)
GAL. TO OVERFLOW	55 Gal. (208 L.)
MIN. OPERATING GAL.	45 Gal. (171 L.)
BATHING WELL AT SUMP	16-1/4 X 38-1/4 In. (413 X 972mm)
BATHING WELL AT RIM	26-1/4 X 52-1/2 In. (667 X 1334mm)
WATER DEPTH TO OVERFLOW	15 In. (381mm)
FLOOR LOADING (PROJECTED AREA)	43 Lbs./Sq. Ft. (208 Kgs/Sq. m.)
PTS.	15.6
CUBE (FT <sup>3</sup> )	35.3
WHIRLPOOL ELECTRICAL SPECIFICATIONS	
SYSTEM I PUMP	1.6 HP, 9.7 AMPS, 120V.

**NOTES:**

BATH CAN BE INSTALLED EITHER ABOVE OR BELOW FLOOR LINE AS PIER, ISLAND, OR PENINSULA TYPE INSTALLATION. SUPPORT OF BATH BY SUMP BEDDING. SUPPORT AND ENCLOSING MATERIAL BY OTHERS. REFER TO INSTALLATION INSTRUCTIONS SUPPLIED WITH WHIRLPOOL FOR ADDITIONAL INFORMATION. FITTINGS NOT INCLUDED AND MUST BE ORDERED SEPARATELY. PROVIDE SUITABLE REINFORCEMENT FOR ALL SUPPORTS.

**IMPORTANT:**

Dimensions of fixtures are nominal and may vary within the range of tolerances established by ANSI Standard Z124.1 These measurements are subject to change or cancellation. No responsibility is assumed for use of superseded or voided leaflet.

## Free Manuals Download Website

<http://myh66.com>

<http://usermanuals.us>

<http://www.somanuals.com>

<http://www.4manuals.cc>

<http://www.manual-lib.com>

<http://www.404manual.com>

<http://www.luxmanual.com>

<http://aubethermostatmanual.com>

Golf course search by state

<http://golfingnear.com>

Email search by domain

<http://emailbydomain.com>

Auto manuals search

<http://auto.somanuals.com>

TV manuals search

<http://tv.somanuals.com>