



 **New Solution Series**

NSK3480

User's Manual

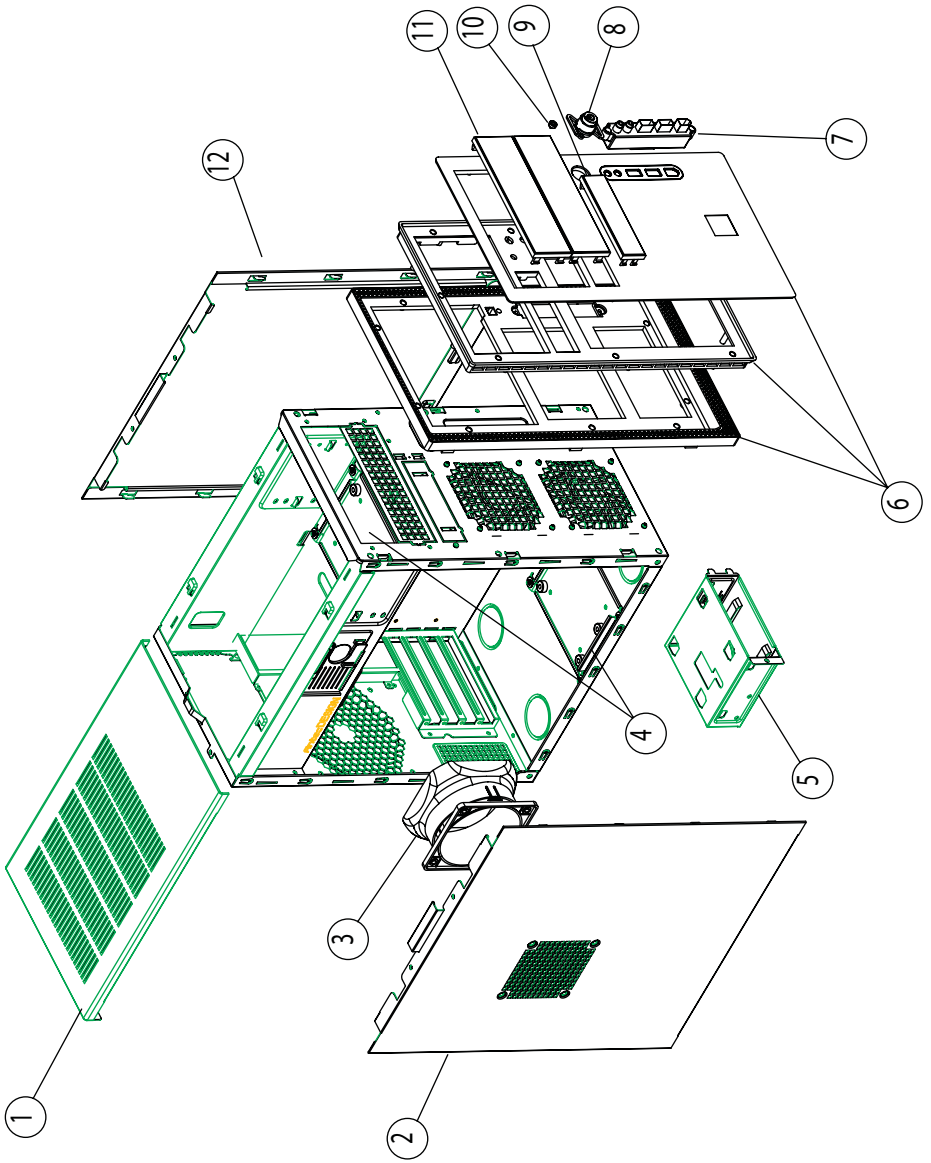
Manuel de l'utilisateur

Anwenderhandbuch

Manuale per l'operatore

Manual del usuario

取扱説明書



| # | Description | # | Description |
|---|-----------------|----|---------------------|
| 1 | Top cover | 7 | Front port assembly |
| 2 | Left side cover | 8 | Power button |
| 3 | Air Duct | 9 | 3.5" bay cover |
| 4 | HDD tray | 10 | Reset button |
| 5 | 3.5 cage | 11 | 5.25" bay cover |
| 6 | Front bezel | 12 | Right side panel |

| # | Description | # | Description |
|---|---------------------------------|----|----------------------------|
| 1 | Capot supérieur | 7 | Ensemble des ports avant |
| 2 | Capot gauche | 8 | Bouton d'alimentation |
| 3 | Conduite d'air | 9 | Cache de baie de 3,5 po |
| 4 | Plateau d'unité de disque dur | 10 | Bouton de réinitialisation |
| 5 | Panier 3,5 pouces | 11 | Cache de baie de 5,25 po |
| 6 | Collerette d'encastrement avant | 12 | Panneau droit |

| # | Description | # | Description |
|---|-----------------------|----|-------------------------|
| 1 | Obere Abdeckung | 7 | Frontanschlüsse |
| 2 | Linke Seitenabdeckung | 8 | Netztaсте |
| 3 | Luftführung | 9 | 3,5" Laufwerkabdeckung |
| 4 | HDD Platten-Laufwerk | 10 | Reset-Taste |
| 5 | 3,5" Käfig | 11 | 5,25" Laufwerkabdeckung |
| 6 | Frontblende | 12 | Rechte Seitenabdeckung |

| # | Description | # | Description |
|---|---------------------------------|----|---------------------------------------------|
| 1 | Pannello superiore | 7 | Gruppo porta anteriore |
| 2 | Pannello sinistro | 8 | Interruttore generale |
| 3 | Condotto dell'aria | 9 | Coperchio della guida di fissaggio da 3,5" |
| 4 | Vassoio per unità a disco fisso | 10 | Pulsante di reset |
| 5 | Gabbia da 3,5" | 11 | Coperchio della guida di fissaggio da 5,25" |
| 6 | Pannello anteriore | 12 | Pannello destro |

| # | Description | # | Description |
|---|-------------------------|----|--------------------------------|
| 1 | Tapa superior | 7 | Conjunto de puertos delanteros |
| 2 | Tapa izquierda | 8 | Botón de alimentación |
| 3 | Conducto de aire | 9 | Tapa de alojamiento de 3,5" |
| 4 | Bandeja para disco duro | 10 | Botón de reinicio |
| 5 | Armazón de 3,5" | 11 | Tapa de alojamiento de 5,25" |
| 6 | Marco frontal | 12 | Panel derecho |

| # | 詳細 | # | 詳細 |
|---|-----------|----|--------------|
| 1 | 上カバー | 7 | フロントポートアセンブリ |
| 2 | 左サイドカバー | 8 | 電源ボタン |
| 3 | エアダクト | 9 | 3.5インチベイカバー |
| 4 | HDDトレイ | 10 | リセットボタン |
| 5 | 3.5インチケージ | 11 | 5.25インチベイカバー |
| 6 | フロントベゼル | 12 | 右サイドパネル |

Antec, Inc.

47900 Fremont Blvd.
Fremont, CA 94538
USA
tel: 510-770-1200
fax: 510-770-1288

Antec Europe B.V.

Stuttgartstraat 12
3047 AS Rotterdam
The Netherlands
tel: + 31 (0) 10 462-2060
fax: + 31 (0) 10 437-1752

Customer Support:

US & Canada

1-800-22ANTEC
customersupport@antec.com

Europe

+ 31 (0) 10 462-2060
europe.techsupport@antec.com

www.antec.com

© Copyright 2007 Antec, Inc. All rights reserved.
All trademarks are the property of their respective owners.
Reproduction in whole or in part without written permission is prohibited.
Printed in China.

Free Manuals Download Website

<http://myh66.com>

<http://usermanuals.us>

<http://www.somanuals.com>

<http://www.4manuals.cc>

<http://www.manual-lib.com>

<http://www.404manual.com>

<http://www.luxmanual.com>

<http://aubethermostatmanual.com>

Golf course search by state

<http://golfingnear.com>

Email search by domain

<http://emailbydomain.com>

Auto manuals search

<http://auto.somanuals.com>

TV manuals search

<http://tv.somanuals.com>