



ASUS

Padfone[™] 2



Quick Start Guide

E7674

First Edition

Copyright © 2012 ASUSTeK COMPUTER INC.

All Rights Reserved.

No part of this manual, including the products and software described in it, may be reproduced, transmitted, transcribed, stored in a retrieval system, or translated into any language in any form or by any means, except documentation kept by the purchaser for backup purposes, without the express written permission of ASUSTeK COMPUTER INC. ("ASUS").

Product warranty or service will not be extended if: (1) the product is repaired, modified or altered, unless such repair, modification or alteration is authorized in writing by ASUS; or (2) the serial number of the product is defaced or missing.

ASUS PROVIDES THIS MANUAL "AS IS" WITHOUT WARRANTY OF ANY KIND, EITHER EXPRESS OR IMPLIED, INCLUDING BUT NOT LIMITED TO THE IMPLIED WARRANTIES OR CONDITIONS OF MERCHANTABILITY OR FITNESS FOR A PARTICULAR PURPOSE. IN NO EVENT SHALL ASUS, ITS DIRECTORS, OFFICERS, EMPLOYEES OR AGENTS BE LIABLE FOR ANY INDIRECT, SPECIAL, INCIDENTAL, OR CONSEQUENTIAL DAMAGES (INCLUDING DAMAGES FOR LOSS OF PROFITS, LOSS OF BUSINESS, LOSS OF USE OR DATA, INTERRUPTION OF BUSINESS AND THE LIKE), EVEN IF ASUS HAS BEEN ADVISED OF THE POSSIBILITY OF SUCH DAMAGES ARISING FROM ANY DEFECT OR ERROR IN THIS MANUAL OR PRODUCT.

SPECIFICATIONS AND INFORMATION CONTAINED IN THIS MANUAL ARE FURNISHED FOR INFORMATIONAL USE ONLY, AND ARE SUBJECT TO CHANGE AT ANY TIME WITHOUT NOTICE, AND SHOULD NOT BE CONSTRUED AS A COMMITMENT BY ASUS. ASUS ASSUMES NO RESPONSIBILITY OR LIABILITY FOR ANY ERRORS OR INACCURACIES THAT MAY APPEAR IN THIS MANUAL, INCLUDING THE PRODUCTS AND SOFTWARE DESCRIBED IN IT.

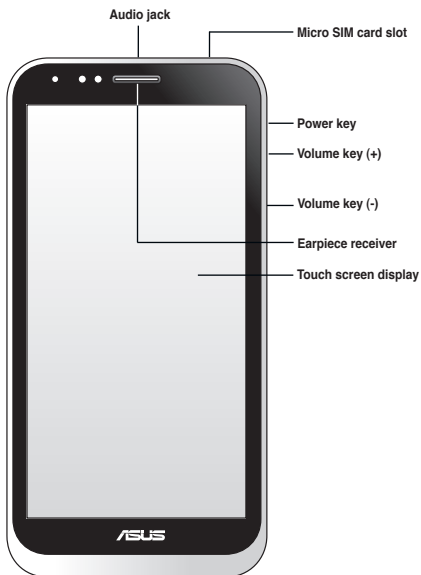
Products and corporate names appearing in this manual may or may not be registered trademarks or copyrights of their respective companies, and are used only for identification or explanation and to the owners' benefit, without intent to infringe.

Thank you for purchasing another awesome ASUS product!
Before you start, ensure that you have read all the safety information and operating instructions in the **Important Notices** to prevent injury or damage to your device.

NOTE: This bundled Quick Start Guide is for reference only and is subject to change without prior notice. For the latest updates and more detailed information, please visit www.asus.com.

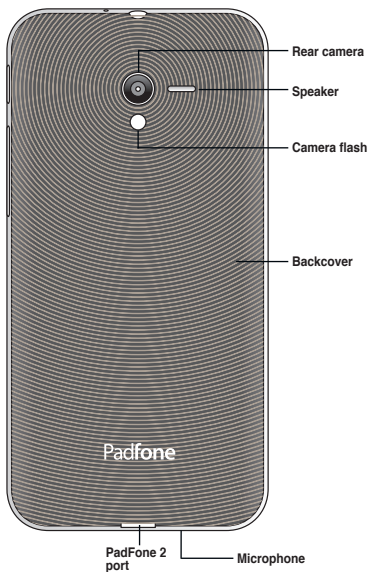
Getting to know your PadFone 2

Front features



WARNING: If you plan to use your PadFone 2 with a PadFone 2 Station, we do not recommend adding a protective film or cover to your PadFone 2 as it can result in difficulty when inserting/removing the PadFone 2 to/from the PadFone 2 Station.

Rear features

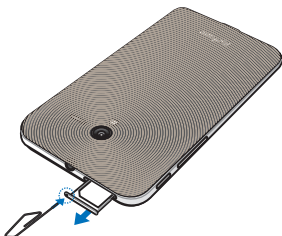


Installing the micro SIM card

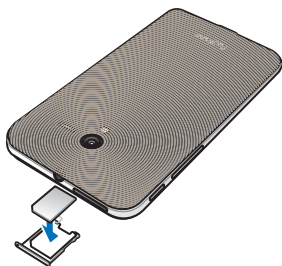
Before you can start using your PadFone 2, you need to install a micro Subscriber Identity Module (micro SIM) card.

To install the SIM card:

Remove the micro SIM card tray



Install the micro SIM card





Replace the micro SIM card tray

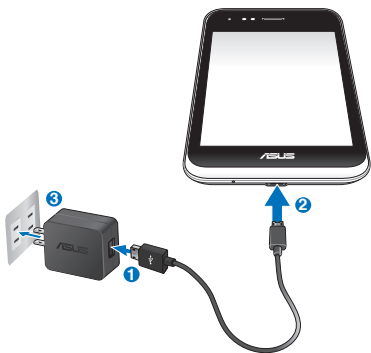


Charging your PadFone 2

After installing your SIM card, we strongly recommend that you charge your device fully before turning it ON.

To charge your PadFone 2:

1. Connect the USB connector into the power adapter's USB port.
2. Connect the PadFone 2 connector into your PadFone 2.
3. Plug the power adapter into a wall socket.



NOTICE:

- Use only the power adapter that comes with your device. Using a different power adapter may damage your device.
- Using the bundled power adapter and PadFone 2 signal cable to connect your PadFone 2 to a power outlet is the best way to charge your PadFone 2.
- The input voltage range between the wall outlet and this adapter is AC 100V - 240V. The output voltage through the micro USB cable is DC 5V, 2A.

Turning your PadFone 2 on or off

Press the power key at the side of your PadFone 2 to turn the device on or to turn it off.



IMPORTANT The first time you turn your PadFone 2 on, you will see the Welcome screen. Touch the menu to select your preferred language then touch **Next Step**. Follow the succeeding onscreen instructions to set up your PadFone 2.

To turn your PadFone 2 off:

1. Press the power key for about five (5) seconds until the power off menu appears.
2. Touch **Power Off** then touch **OK** to confirm.

Free Manuals Download Website

<http://myh66.com>

<http://usermanuals.us>

<http://www.somanuals.com>

<http://www.4manuals.cc>

<http://www.manual-lib.com>

<http://www.404manual.com>

<http://www.luxmanual.com>

<http://aubethermostatmanual.com>

Golf course search by state

<http://golfingnear.com>

Email search by domain

<http://emailbydomain.com>

Auto manuals search

<http://auto.somanuals.com>

TV manuals search

<http://tv.somanuals.com>