



# Test Report

MULTIFUNCTIONAL PRODUCTS  
Imagistics 2500 MFP w/AXIS Print Controller 5400  
15PPM/Fax/Copier/Printer



*Test period duration:*  
Three months

**Distributor:**

Imagistics International, Inc.  
Trumbull, CT

**Manufacturer:**

Brother International Corporation  
Made in China

**Serial number:** 2510765

**Suggested retail price:** \$1,995; \$3,012 as tested with the optional 250-sheet paper drawer (\$299), 32-MB fax memory (\$419) and Axis print controller 5400 (\$299).

**Type:** Desktop, CIS stationary sheet-fed exposing unit, laser printing, bond sheet paper, heat and pressure fusing multifunctional device with standard standalone facsimile, convenience copying, host-based printing, scanning and PC faxing as well as optional network printing and LAN faxing via an external print device.

**Manufacturer's recommended monthly volume:** Up to 10,000 impressions.

**BLI's recommended monthly volume for optimum performance:** High-volume faxing, mid-volume printing and convenience copying.



## GENERAL APPRAISAL

The Imagistics Model 2500 MFP, a reliable 15-ppm fax-centric multifunctional device offering standalone faxing, convenience copying and host-based printing, scanning and PC faxing in its standard configuration, as well as optional network printing and LAN faxing, was a good overall performer in BLI's tests. Competitively priced with features that are competitive to above-average when compared to other mid-volume fax-centric units (which is how Imagistics markets this product), this laser-based unit completed testing without any misfeeds or malfunctions.

In addition to operating reliably, the unit displayed good ease of use from its well-laid-out control panel, which has separate sections for fax, copy and scan functions. The device

*continued*

Copyright 2003. **WARNING:** This material is copyrighted by Buyers Laboratory Inc. and is the sole property of Buyers Laboratory. Duplication of this proprietary report or excerpts from this report, in any manner, whether printed or electronic (including, but not limited to, copying, faxing, scanning or use on a fax-back system), is illegal and strictly forbidden without written permission from Buyers Laboratory. Violators will be prosecuted to the fullest extent of the law. To purchase reprints of any BLI reports or articles, contact BLI at (201) 488-0404. Buyers Laboratory Inc., 20 Railroad Avenue, Hackensack, NJ 07601. Or visit our Web site at [www.buyerslab.com](http://www.buyerslab.com).

## General Appraisal *continued*

can also be programmed remotely from a PC when configured with the standard parallel or USB interface and using the bundled remote utility (this utility was not tested by BLI since the tested unit was configured with a network connection). Ease of use as a printer was also good. Further contributing to the unit's good ease of use are its procedures for loading paper, removing misfeeds and replacing the toner cartridge and drum unit. Moreover, unlike most units tested, the Imagistics Model 2500 MFP received BLI's highest rating in both copy and print mode for all types of output evaluated (text, line art, solids and halftones). Testing also revealed that the unit's multitasking capabilities are typical of other units in this range tested to date by BLI, with the user able to program a copy job while a print job is in progress, but not while another copy job is in progress.

As a fax machine, the Imagistics Model 2500 MFP offers a 33.6-Kbps modem, JBIG compression, an 8-MB standard memory that can be upgraded to 40 MB, the highest maximum memory capacity for current mid-volume units, a 30-sheet automatic document feeder, a 250-sheet paper capacity that can be increased to 500 sheets, as well as a single-sheet bypass tray, and multi-access. Other fax features of this unit, which has a 3.56-second-per-page BLI-tested scan speed, include batch transmission, 50 timers for delayed operations, 132 autodial destinations, 168-hour battery backup (the longest battery backup time available for current units), broadcasting to 182 destinations, distinctive-ring detection, error-correction mode, an automatic cover sheet feature and remote diagnostics. Furthermore, the Imagistics Model 2500 MFP dials the destina-

tion and begins transmitting while pages are scanned to memory.

As a convenience copier, the unit can output up to 99 copies in a single run at 600-dpi resolution and provides an auto reduction mode and pre-set (50%, 78%, 94%, 100%, 104%, 150% and 200%) and zoom (50% to 200% in 1% increments) reduction/enlargement modes. Other copying features include the ability to sort multiple copies and to copy two or four pages onto one page as well as a fax and copy feature that allows users to make a copy of their fax document at the same time they send the fax. Furthermore, the unit's first-copy time, at 12.78 seconds, is faster than the large majority of fax-centric multifunctional units tested to date.

## Connectivity

The Imagistics Model 2500 MFP was tested as a network printer using the optional external AXIS print server network interface, which was easy to install. The bundled PCL 5e (emulation) print driver for Windows 95, 98, 2000, NT 4.0 and Me was also easy to use and includes such noteworthy features as toner-save mode, brightness/contrast, manual duplexing with margins (Windows 98 only), the ability to print the date and time, and N-up printing with or without borders. Also noteworthy is that the driver allows users to click on a graphical image to select the paper source. The Imagistics 2500 MFP, which output at its rated speed of 15 ppm, prints at 600-dpi resolution.

The Imagistics 2500 MFP also offers LAN faxing as well as PC scanning to a PC directly connected via the unit's standard parallel or USB interface (PC scanning was not tested by BLI as the unit was tested in a network environment).

*continued*

**General Appraisal** *continued*

**Shortcomings**

In addition to one criticism that is common for fax-centric units (that it does not automatically detect the size of paper after changing the paper size), BLI technicians found the following shortcomings: 1) Feedback to PC workstations was rated “Poor” because, while utilities that provide feedback to a PC user are available in the unit’s standard configuration via a parallel/USB connection, the only information available in BLI’s tested configuration with the optional AXIS print server is a list of completed jobs accessible from the Web page. 2) The unit’s cost per page is higher than the average for laser/LED fax-centric multifunctional units tested to date. In fact, only two other units tested have a higher cost per page. 3) When the unit redialed the destination after being subjected to excessive line noise, it transmitted the entire file, including the pages that were successfully transmitted, which would cause unnecessary telephone line costs.

**Price Analysis and Summary**

As mentioned above, the Imagistics 2500 MFP’s cost per page is among the highest for laser/LED fax-centric multifunctional units tested to date. However, the unit has a suggested retail price that is competitive when compared to those of other mid-volume units currently available, while providing a print

speed, compression method and a standard and maximum memory capacity that are above average for units in this volume class. Because of its good overall performance, BLI recommends the Imagistics 2500 MFP for high-volume faxing, mid-volume printing and convenience copying.

**Copy Quality:**

**Text:** ..... Good  
**Line art:** ..... Good  
**Halftones:** ..... Good  
**Solids:** ..... Good

**Print Quality:**

**Text:** ..... Good  
**Line art:** ..... Good  
**Halftones:** ..... Good  
**Solids:** ..... Good

**Ease of use:** ..... Good

**Ease of maintenance:** ..... Good

**Estimated waste:** ..... Low

**Estimated downtime:** ..... Low

**Total service calls (including PMs)** ..... 0

**MIBF:** ..... Not applicable

**MIBS:** ..... Not applicable

**Toner yield (at 6% page coverage)** ..... 4,369

Copyright 2003. **WARNING:** This material is copyrighted by Buyers Laboratory Inc. and is the sole property of Buyers Laboratory. Duplication of this proprietary report or excerpts from this report, in any manner, whether printed or electronic (including, but not limited to, copying, faxing, scanning or use on a fax-back system), is illegal and strictly forbidden without written permission from Buyers Laboratory. Violators will be prosecuted to the fullest extent of the law. To purchase reprints of any BLI reports or articles, contact BLI at (201) 488-0404. Buyers Laboratory Inc., 20 Railroad Avenue, Hackensack, NJ 07601. Or visit our Web site at [www.buyerslab.com](http://www.buyerslab.com).

## TEST RESULTS AND OBSERVATIONS

*Test equipment:* BLI's dedicated test network, consisting of Windows NT 4.0 file servers, Windows 98 and 2000 workstations, 10/100BaseTX network switches and CAT5 cabling.

### Reliability

*Malfunctions encountered during tests:* None. However, there was repetitive misfeeding in tray two, which Imagistics technicians attributed to a damaged tray. The tray was replaced, after which there was no problem.

*Misfeeds encountered during tests:* See above.

*Additional observations:* 1) BLI technicians were unable to start MFL-PRO Suite, the bundled software utility, when the Imagistics Model 2500 MFP was connected to a Windows 2000 workstation, requiring BLI technicians to download a patch via the Scansoft Web site, which resolved the problem. 2) The AXIS print controller periodically lost communication with the Imagistics Model 2500 MFP. To resolve the problem, BLI technicians had to disconnect the power cord from the controller, remove the controller from the rear of the device (parallel port), disconnect the network cable, reconnect the controller to the machine and insert the network cable and the power cord. It should be noted that these steps only temporarily resolve the problem and must be taken each time the controller loses communication with the Model 2500 MFP. 3) In testing it was observed that once tray one is empty, the speed when printing from tray two was much slower than when printing from tray one. 4) If the unit is configured with the optional second tray and the user adds paper to the first tray while it's feeding from the second tray, misfeeding may occur because tray two feeds through the front feed section of tray one. 5) When using Adobe Acrobat 5.0 on a Windows 2000 workstation, fonts did not print properly until the font package, which is bundled on the CD-ROM, was installed. 6) Although there is a collate selection within the Windows 2000 driver, it does not function. Users must select collate from within an application.

### Maintenance

The Imagistics Model 2500 MFP employs a user-replaceable drum unit and a user-replaceable toner cartridge.

*Guarantee/Warranty:* The Imagistics Model 2500 MFP is backed by a 90-day warranty on parts and service.

*Service pricing:* Contact your local Imagistics sales office for service contract pricing.

### User-Replaceable Consumables

*Toner cartridge:* Suggested retail price, \$195. Manufacturer's rated yield, 10,000 pages at 4% page coverage.

*Drum unit:* Suggested retail price, \$195. Manufacturer's rated yield, 20,000 pages at 4% page coverage.

*Ease of replacing toner:* Good. When toner is low, the toner icon flashes and the display indicates "TONER LOW"; when the toner cartridge is empty, "TONER EMPTY" appears on the display and the cartridge has to be changed. Replacement of the cartridge is a straightforward and clean procedure.

*Toner replacement possible during a print/copy run:* No.

*Ease of replacing drum unit:* Good. When the drum is near the end of its life, "CHANGE DRUM SOON" appears on the display; when the drum is empty, "Change Drum" appears on the display and the drum unit has to be replaced. The user removes the imaging cartridge assembly, which consists of the toner cartridge and drum unit, separates the toner cartridge and the drum unit by releasing the lock lever, attaches the new drum unit to the toner cartridge, inserts the imaging assembly into the machine, and resets a drum counter. First-time users will need to refer to the owner's manual for instructions on how to reset the counter. Replacing the drum unit was a straightforward and clean procedure.

#### TESTED TONER YIELD/ COST PER PAGE

Toner Yield (Impressions)	Impressions Per Gram
4,369	37.69
Toner Cost Per Page	Supplies Cost Per Page*
4.463¢	5.43¢

Print cartridge net weight: 115.9 grams

\* Based on suggested retail price, tested toner yield (based on 6% page coverage) and the manufacturer's claimed yield for the drum unit.

## TEST RESULTS AND OBSERVATIONS *continued*

### *Ease of Operation*

*Documentation:* Good. The unit comes with a printed owner's manual and quick setup guide, as well as a CD-ROM that includes the owner's manual, quick setup guide and a manual for PaperPort software. The optional AXIS print server 5400 includes a printed user's guide and a CD-ROM that includes instructions for installing utilities for Windows 3.1, 95/98 and NT environments as well as Mac, OS2 and UNIX environments. However, there are no reference guides for Windows 2000, Me or XP installations.

*Ease of use:* Good. The control panel offers a two-line, 32-character text LCD display and has separate sections for fax, copy and scan functions. Users can automatically scroll through the programming functions by pressing the "Function" key on the control panel and program the selection by pressing the "Enter/Yes" key. Alternatively, the user can use the left and right arrow keys to scroll through the menu selections or simply select the number pertaining to the desired selection. The function numbers along with the function selections are displayed on the LCD. In addition, a list of the user-settable functions can be printed via the "Reports" key on the control panel. When configured with a parallel or USB interface, the device can also be programmed remotely from a PC using a bundled remote utility (not tested). Ease of use as a printer was also good.

*Control panel status messages/job access:* Messages regarding device status, such as "receiving data," "dialing" and "printing," appear on the control panel. There is no print queue listed, nor is there access to the job in progress.

*Feedback to PC workstations:* Poor. While utilities that provide feedback to a PC user are available in the unit's standard configuration via a parallel/USB connection, the only information available in BLI's tested configuration with the optional AXIS print server is a list of completed jobs accessible from the Web page.

*Pop-up status/error messages:* No.

*Icon alerts:* No.

*Device status:* No.

*Print job status:* Yes, via the Web page for completed jobs only.

*Paper supply gauge from driver/utility/Web:* No/No/No.

*Paper size status from driver/utility/Web:* No/No/No.

*Always-on-top status information:* No.

*Ease of removing misfeeds:* Good. Non-clamshell design with three misfeed locations, including one for the document feeder.

*Ease of loading paper:* Good.

*Ease of adjusting paper drawers:* Fair. The drawer must be removed from the machine and the rear and side guides adjusted. The correct paper size is then set using the machine's control panel. See "Operator error."

*Auto paper size sensing:* No.

*Operator error:* Since there is no paper size detection for the paper drawer, if the user does not set the correct paper size after changing paper size, documents may be printed onto the wrong size paper and misfeeding may occur. However, it should be noted that the bundled software allows users to make this change to either drawer from a PC, rather than from the control panel's menu system, when the unit is connected to a PC via a parallel or USB connection (the unit was tested in a networked environment). The exit tray does not have a sensor to stop the device from printing/copying; consequently, when the capacity is exceeded, a paper jam will occur.

### *Throughput Capabilities/Materials*

*Paper output:* Paper is output face down in correct page order to an internal 150-sheet tray.

*Ability to process labels:* Avery #5351 labels performed satisfactorily in the tests. (Imagistics recommends that users feed labels through the bypass tray).

*Ability to process transparencies:* 3M-PP2500 clear transparencies performed satisfactorily in the tests. (Imagistics recommends that users feed labels through the bypass tray).

*Ability to process envelopes:* BLI technicians were able to successfully print onto single envelopes via the bypass.

TEST RESULTS AND OBSERVATIONS *continued*



Imagistics 2500 MFP Control Panel

**IMAGISTICS MODEL 2500 MFP  
MULTITASKING EVALUATION**

Primary Function \ Secondary Function	SEND FAX	RECEIVE FAX	LAN FAX SEND	PRINT	COPY
<b>SEND FAX</b>	Yes	No <sup>2</sup>	Yes	Yes	No <sup>1</sup>
<b>RECEIVE FAX</b>	Yes	No <sup>2</sup>	Yes	Yes	No <sup>1</sup>
<b>LAN FAX SEND</b>	Yes	No <sup>2</sup>	Yes	Yes	No <sup>1</sup>
<b>PRINT</b>	Yes	Yes	No <sup>3</sup>	Yes	Yes
<b>COPY</b>	Yes	Yes	Yes	Yes	No <sup>1</sup>

<sup>1</sup> The device beeps in error. (4)

<sup>2</sup> Telephone line is busy. (3)

<sup>3</sup> An error is displayed at the PC. (1)

**NOTE:** (X) indicates number of occurrences. A "Yes" indicates that the user can initiate the secondary function while the primary function is taking place and that no further user intervention will be required for the secondary function to take place.

*Mode priority:* None.

*Interrupt:* The Imagistics Model 2500 MFP does not have an interrupt key.

*Memory allocation:* Memory is shared among fax, copy and printer functions.

*Program ahead (reserve copy job) while copying:* No.

*Program ahead (reserve copy job) while printing:* Yes.

*Device/feature contention issues.* None.

Copyright 2003. **WARNING:** This material is copyrighted by Buyers Laboratory Inc. and is the sole property of Buyers Laboratory. Duplication of this proprietary report or excerpts from this report, in any manner, whether printed or electronic (including, but not limited to, copying, faxing, scanning or use on a fax-back system), is illegal and strictly forbidden without written permission from Buyers Laboratory. Violators will be prosecuted to the fullest extent of the law. To purchase reprints of any BLI reports or articles, contact BLI at (201) 488-0404. Buyers Laboratory Inc., 20 Railroad Avenue, Hackensack, NJ 07601. Or visit our Web site at [www.buyerslab.com](http://www.buyerslab.com).

## TEST RESULTS AND OBSERVATIONS *continued*

### *Performance of Copier Functions*

#### **Copy Quality**

*Density of solid black copied image (based on eight readings corresponding to eight different locations on the original):*

*Density of original:* Range, 1.71 to 1.77 (on a scale of 0 to 2.5, with 2.5 being as dark as would be possible under most circumstances).

*Density of copy:* Range, 1.32 to 1.47 (on a scale of 0 to 2.5, with 2.5 being as dark as would be possible under most circumstances).

*Density range for units in this class tested to date:* 1.10 to 1.53.

*Copy quality:*

*Text:* Good

*Line art:* Good

*Halftones:* Good

*Solids:* Good

#### **Copier Productivity**

*Copying speed (8-1/2" x 11" R copies):*

*First-copy time from the document feeder:* 12.78 seconds (there are no automatic selection modes).

*Number of copies per minute (excluding first copy):* 14

*Number of copies per minute (including first copy):* 10

#### **Performance of Printer Functions**

*General:* The Imagistics Model 2500 MFP was tested as a network printer using the optional external AXIS print server 5400 network interface.

#### **Print Quality**

*Density of solid black printed image (based on four readings corresponding to four different locations on the original):*

*Range:* 1.34 to 1.37; range for laser/LED printers tested to date, 0.98 to 1.67.

*Print quality:*

*Text:* Good

*Line art:* Good

*Halftones:* Good

*Solids:* Good

*Compatibility (units are tested for compatibility with Microsoft Word 2000, Microsoft PowerPoint 2000, Adobe PageMaker 7.0, Adobe Photoshop 6.0 and Adobe Acrobat 5.0 using 25 application test files, which contain text, graphics, halftone images, tables, etc., enabling BLI technicians to evaluate memory usage, file processing, font-rendering and grayscale capability):* Good. BLI technicians noted that fonts did not print properly when using Adobe Acrobat 5.0 on a Windows 2000 workstation until the font package, which is bundled on the CD-ROM, was installed.

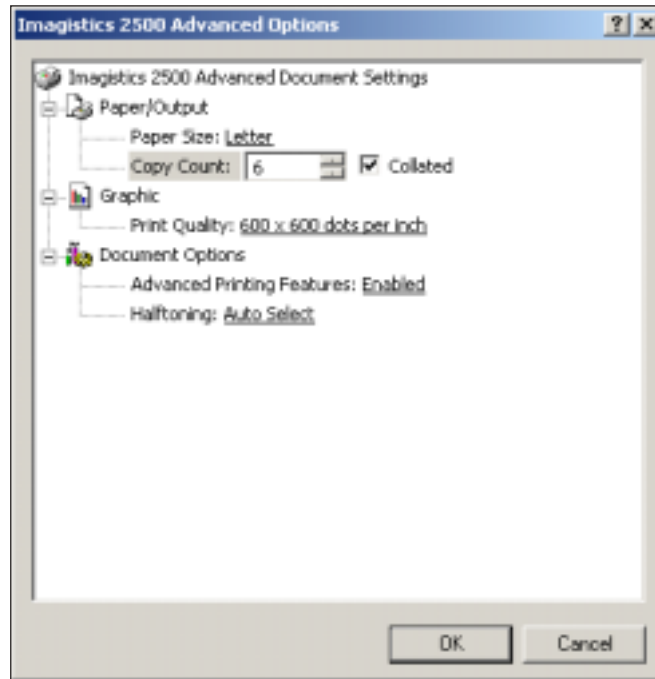
*Print drivers:* The Imagistics Model 2500 MFP includes a PCL 5e (emulation) print driver for Windows 95/98, 2000, NT 4.0 and Me. The installation of the optional AXIS print server (see "Networking and connectivity") and use of the print driver were easy. The driver has most of the features commonly found on devices in this category, as well as noteworthy features such as toner-saver mode, brightness/contrast, manual duplexing with margins (Windows 98 only), ability to print the date and time and N-up printing with or without borders. Also noteworthy is that the driver allows users to click on a graphical image to select the paper source. The Windows 98 and 2000 drivers varied in appearance, with the 2000 driver offering fewer graphics than the Windows 98 driver. Any differences in functionality are highlighted in the chart below.

**TEST RESULTS AND OBSERVATIONS** *continued***IMAGISTICS MODEL 2500 MFP PRINT DRIVER FEATURES**

Features	Windows 98 PCL 5e	Windows 2000 PCL 5e
Auto Feature/Device Detection	No	No
Booklet Printing	No	No
Collate Sets	Yes	No*
Max paper sources per job	Two	One
Mirror Image	Yes	No
Negative Image	No	No
N-up Printing	2 to 25	2 to 16
Overlay	No	No
Paper Gauge	No	No
Print and Hold	No	No
Proof Print	No	No
Quantity Selection	Up to 999	Up to 9,999
Reduction/Enlargement	25 to 100%or auto	No
Resolution Modes	600 x 600 dpi, 300 x 300 dpi	600 x 600 dpi, 300 x 300 dpi
Save Settings	No	No
Secure Printing	No	No
Watermarks/Custom Watermarks	Yes/Yes	No/No

\* Although there is a collate selection within the Windows 2000 driver, it does not function. Users must select collate from within an application.



**TEST RESULTS AND OBSERVATIONS** *continued***Windows 2000 PCL 5e Print Driver Advanced Screen****Windows 98 PCL 5e Print Driver Basic Screen**

Copyright 2003. **WARNING:** This material is copyrighted by Buyers Laboratory Inc. and is the sole property of Buyers Laboratory. Duplication of this proprietary report or excerpts from this report, in any manner, whether printed or electronic (including, but not limited to, copying, faxing, scanning or use on a fax-back system), is illegal and strictly forbidden without written permission from Buyers Laboratory. Violators will be prosecuted to the fullest extent of the law. To purchase reprints of any BLI reports or articles, contact BLI at (201) 488-0404. Buyers Laboratory Inc., 20 Railroad Avenue, Hackensack, NJ 07601. Or visit our Web site at [www.buyerslab.com](http://www.buyerslab.com).

## TEST RESULTS AND OBSERVATIONS *continued*

*Simultaneous RIP and print:* No. Printing does not begin until the entire document has been RIPPed. Only one document resides on the device at a time, with additional print jobs remaining in the network queue.

*Send once/print many:* It should be noted that the collate setting does not function when using a Windows 2000 workstation. When collate was selected from the

application, the file size was not affected, but the number of pages in the job was multiplied by the quantity selected for the print job. This combined with the fact that the unit handles each set of a job as a separate file means that, for example, with four sets of a 10 page document, a total of 40 pages will be processed before the first page is output.

### *Print Productivity*

#### TESTED RASTER TIMES/PRINT SPEEDS

Windows 2000	Word	PageMaker	Photoshop	Acrobat	Photoshop
File Type	Text	Graphic/Text	Graphic	Graphic/Text	Graphic
File Extension	.DOC	.PM6	.TIF	.PDF	.JPG
Pre-Raster File Size	114 KB	116 KB	20 MB	172 KB	246 KB
Post-Raster File Size	146 KB	65.3 KB	1.40 MB	5.5 MB	2.31 MB
First-Page Time (Seconds)	17.56	17.02	29.37	19.08	31.73
Speed Excluding First Page (PPM)	15.03	15.06	14.99	14.98	12.82
Speed Including First Page (PPM)	11.58	12.03	8.22	9.76	7.08

*Manufacturer's rated speed: 15 ppm.*

*All files are printed in a quantity equal to twice the manufacturer's rated speed for the device. The print speeds were tested at 600 dpi using the PCL 5e print driver via an Ethernet connection with the optional AXIS Print Server 5400.*

*First-page time indicates the time it took to RIP, image and deliver the first page of the test document set to the output tray.*

*Speed excluding first-page time indicates the time for printing the entire set of test originals, excluding first-page RIP and print times.*

*Speed including first-page time indicates the time for printing the entire set of test originals, including first-page RIP and print times.*

*Networking and connectivity:* BLI technicians installed the Imagistics Model 2500 MFP, configured with the optional AXIS Print Server 5400, on BLI's dedicated test network using a Windows NT 4.0 server. Network configuration, as well as installation of the print drivers, was simple using the AXIS IP Installer, which is used to assign an IP address for the print server card, and the AXIS Print Monitor, which creates a port for networking printing. The administrator powers off the Imagistics Model 2500 MFP, connects the AXIS Print Server 5400 to the parallel port of the device and then connects the power cord for the AXIS server to the outlet and powers on the Imagistics Model 2500 MFP. Using

the supplied AXIS IP Installer software, the user simply highlights the serial number, confirms it's the same as the serial number on the AXIS Print Server 5400 card and assigns an IP address for the card. Once this is completed, the administrator installs the AXIS Print Monitor utility, which creates a network print port for the device when the print driver is installed. Once the driver is installed, the administrator selects the port that was created. No networking problems were encountered and the installation utility was very easy to use. It should be noted, however, that in order for AXIS IP Installer to properly function, BOOTP and DHCP must be enabled via the embedded Web utility.

Copyright 2003. **WARNING:** This material is copyrighted by Buyers Laboratory Inc. and is the sole property of Buyers Laboratory. Duplication of this proprietary report or excerpts from this report, in any manner, whether printed or electronic (including, but not limited to, copying, faxing, scanning or use on a fax-back system), is illegal and strictly forbidden without written permission from Buyers Laboratory. Violators will be prosecuted to the fullest extent of the law. To purchase reprints of any BLI reports or articles, contact BLI at (201) 488-0404. Buyers Laboratory Inc., 20 Railroad Avenue, Hackensack, NJ 07601. Or visit our Web site at [www.buyerslab.com](http://www.buyerslab.com).

## TEST RESULTS AND OBSERVATIONS *continued*

*Administrative utilities:* Administrative utilities include an embedded Web utility and the AXIS print server, which offers limited administrative capabilities, such as the ability to configure network settings and view a brief temporary job log of completed jobs. Also, see “Web-based administration.”

*Auto run for administrative utility/print driver installation:* Yes/Yes.

*Job log/accounting:* Yes/Yes. The Web utility offers tracking for print jobs.

*Password protection/access rights:* Yes. The Web utility is password-protected.

*Device status:* No.

*Document manipulation:* No.

*Automatic port creation:* Yes. The port is created by entering an IP address via the AXIS IP Installer, which creates a port.

*Network configuration from control panel/utility/Web:* No/Yes/Yes.

*Manipulate order of print jobs in queue/print priority levels:* No.

*Reprint stored job without reRIPping:* No.

*Job status:* No. The only information available is a list of completed jobs from the Web page.

*Remote manipulation of device/print job settings:* No/No. A utility is offered for parallel and USB users to make changes remotely.

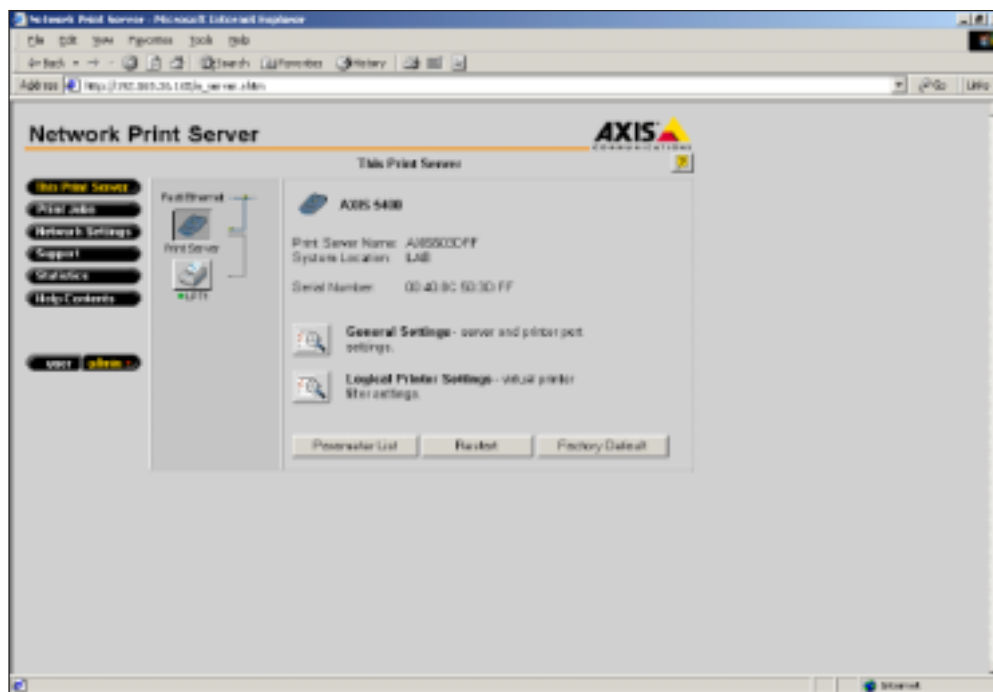
*Multiple-device monitoring:* No.

*File downloading:* No.

*Consumables monitoring:* No.

*Preview or thumbnail image of file:* No.

*Web-based administration:* Yes, via the network print server Web utility, which offers password protection and the ability to make remote network changes, but doesn't offer status information.



### Imagistics Model 2500 MFP Web Utility

Copyright 2003. **WARNING:** This material is copyrighted by Buyers Laboratory Inc. and is the sole property of Buyers Laboratory. Duplication of this proprietary report or excerpts from this report, in any manner, whether printed or electronic (including, but not limited to, copying, faxing, scanning or use on a fax-back system), is illegal and strictly forbidden without written permission from Buyers Laboratory. Violators will be prosecuted to the fullest extent of the law. To purchase reprints of any BLI reports or articles, contact BLI at (201) 488-0404. Buyers Laboratory Inc., 20 Railroad Avenue, Hackensack, NJ 07601. Or visit our Web site at [www.buyerslab.com](http://www.buyerslab.com).

## TEST RESULTS AND OBSERVATIONS *continued*

### *Performance of Standalone Fax Functions*

*Fax scanning speed:* The average scanning speed is obtained from scanning into memory three originals using standard resolution and normal contrast settings; timing begins when the "Start" button is pressed and continues until the last page exits onto the exit tray.

*Fax scanning speed with 4% page coverage original:* 3.56 seconds per page; range for fax machines tested to date 1.59 to 14.94 seconds.

*Fax scanning speed with 12% page coverage original:* 4.03 seconds per page; range for fax machines tested to date, 1.59 to 26.11 seconds.

*Memory capacity:* The unit was equipped with the maximum 40 MB of memory (8 MB is standard). Because of the unit's large memory, memory capacity was not tested; however, Imagistics claims a capacity of 3,000 pages based on ITU-T Test Document #1.

*Transmitting from memory after a failed communication:* Fair. When the Imagistics Model 2500 MFP was subjected to excessive line noise, the destination was automatically redialed, but the entire document was retransmitted,

including pages that had already been successfully transmitted, needlessly incurring additional expense. With some other devices tested, only the affected pages and the first page (which may be a cover page), or the pages from the point that error occurred, are transmitted.

*Transmitting from memory when the size of the file exceeds memory capacity:* Because it is unlikely that the unit's standard 8 MB of memory would be exceeded, this test was not performed.

### *Performance of LAN Fax Functions*

*General:* The LAN fax driver offers cover pages as well as a built-in address book utility.

*Composing and sending a LAN fax:* The user manually selects the "PC-FAX" driver, which is used to send a document as an attachment from within any application. The LAN fax driver requires users to switch between the print driver to print and the LAN fax driver to fax from within any application on a user's workstation over a network connection.



**Imagistics Model 2500 MFP LAN Fax Driver**

*Receiving a LAN fax:* Not applicable. The system does not receive faxes to the PC.

*LAN fax logs/reports:* Not applicable.

*Printing a LAN fax:* Not applicable. The system does not receive faxes to the PC.

## PERFORMANCE OF TESTED SPECIAL FEATURES

### *Document Feeder*

Satisfactory. The standard automatic document feeder will automatically feed up to 30 sheets ranging in size from 5-13/16" x 3-29/32" to 8-1/2" x 14-7/64". Acceptable paper weights, 17 to 24 lbs.

### *Single-Sheet Bypass*

Satisfactory. The Imagistics Model 2500 MFP has a "non-intelligent" single-sheet bypass for sheets ranging in size from 2-3/4" x 4-1/2" to 8-1/2" x 14" and in weight from 16 to 43 lbs. The tray is integrated into the front of the machine with double-gear side guides that move in sync. The user must select the bypass from the print driver in print mode. In copy mode, the bypass is automatically selected when a sheet is placed in the bypass.

## ENVIRONMENTAL SPECIFICATIONS

*Electrical system:* 120 V, 50/60 Hz, AC, 7.8 amps. The unit tested had a three-wire cord (grounded), 8' in length, and carried UL approval for the United States and Canada.

*Paper fault:* None. (Georgia-Pacific Spectrum Xerographic Bond was used in this test unit.)

## PHYSICAL SPECIFICATIONS

DIMENSIONS AND WEIGHTS				
Unit/Accessories	Height	Width	Depth	Weight
Imagistics Model 2500 MFP	12.7"	17.1"	17.4"	26.5 lbs.
250-Sheet Paper Tray	4.2"	12.7"	12.5"	6.5 lbs.

(This report has been reprinted with the written permission of Buyers Laboratory Inc.)

**BACKGROUND INFO**

*SRP (USA; Canada):* \$1,995; Not applicable  
*Manufacturing Status:* New  
*Domestic Intro Date:* March 2002  
*OEM:* Brother (China)  
*Also Sold As:* None

*Compatibility:* Group 3

**TYPE**

*Market Position:* Mid-volume  
*Configuration:* Desktop  
*Scanning Method:* CIS  
*Print Method:* Laser  
*Coding System:* MH/MR/MMR/JBIG

**SPEED/RESOLUTION**

*Modem/Transmission Speed:* 33.6 Kbps/2 spp  
*Print/Quick Scan Speed:* 15 ppm/2 spp  
*Maximum TX Resolution:* 203 x 392 lpi  
*Gray Scale/Halftones:* 64 levels

**PAPER HANDLING**

*Paper Source:* One cassette (adj)  
*Paper Capacity:* 250 sheets  
*Max Paper Cap w/Options:* 500 sheets  
*Document Feeder:* 30 sheets  
*Max/Min Orig Size (WxL):* 8.5 x 14.1/5.8 x 3.9  
*Max Paper/Print Width:* 8.5/8.2  
*Effective Scanning Width:* 8.2  
*Correct-Order Output:* Face down  
*Output Trays:*  
*Originals:* Top  
*Receptions:* Front

**DIALING CAPABILITIES**

*One-Touch Dialing Keys:* 32  
*Speed-Dialing Codes:* 100  
*Max Numbers Stored:* 132  
*Redial Attempts/Intervals:* 3/5 minutes  
*Group Dialing:* 6 groups, 131 numbers  
*Program Keys:* No

**SECURITY CODES**

*Access/Closed User Group:* No/No  
*Department Codes:* No

**COPYING SPECIFICATIONS**

*Max Copy Speed:* 15 cpm  
*Max Copy Resolution:* 600 x 600 dpi  
*Zoom Range (%):* 50% to 200%

**OPTIONS**

*Add'l 250-sheet tray:* \$299  
*16-MB fax memory:* \$399  
*32-MB fax memory:* \$419

**SUPPLIES**

*High-capacity toner crtg:* \$195/10,000  
*Drum unit:* \$195/20,000

**% COVERAGE**

4

**FEATURES**

*Multi Access:* Yes  
*Dual Lines:* No  
*Transmission Reservation:* Yes  
*ECM:* Yes  
*Auto Fax/Tel Switch:* Yes  
*Polling/Location(s):* Yes/182  
*Verification Stamp:* No  
*Relay Req/Transfer Hub:* No/No  
*Timers:* 50 timers  
*Confidential TX/RX:* No/No  
*Other Features:*

Directory dialing; no paper/no toner receive; remote retrieval; auto paging; energy star-compliant; fax forwarding; TAD interface; one sheet by pass for special print jobs

**MEMORY**

*Std/Max Capacity:* 8 MB/40 MB  
*Std/Max Page Capacity:* 500 pages/3,000 pages  
*Document Memory Backup:* Standard, 168 hours  
*Memory Transmission:* Instant dial-tx  
*Batch Files:* 50 files  
*Broadcasting:* Sequential (182 dest)  
*Substitute Reception:* Yes  
*Multicopy Quantity:* 99 copies

**ADDITIONAL INFORMATION**

*Dimensions (H x W x D):* 12.7" x 17.1" x 17.4"  
*Weight:* 26.5 lbs.  
*Power Requirements:* 120 V, 7.8 A  
*Power-Save Mode:* 10 watts  
*Warranty:* 90 days

**COMMENTS**



**Info not avail = Info not provided by MFR.** Specs were obtained from manufacturer/distributor and not confirmed by BLI testing.  
 (FAD IMAGE #22056)

Copyright 2003. **WARNING:** This material is copyrighted by Buyers Laboratory Inc. and is the sole property of Buyers Laboratory. Duplication of this proprietary report or excerpts from this report, in any manner, whether printed or electronic (including, but not limited to, copying, faxing, scanning or use on a fax-back system), is illegal and strictly forbidden without written permission from Buyers Laboratory. Violators will be prosecuted to the fullest extent of the law. To purchase reprints of any BLI reports or articles, contact BLI at (201) 488-0404. Buyers Laboratory Inc., 20 Railroad Avenue, Hackensack, NJ 07601. Or visit our Web site at [www.buyerslab.com](http://www.buyerslab.com).

**MULTIFUNCTION MODES**

*Copier:* Std conven      *Network Printer:* Opt  
*Fax Machine:* Std      *PC Printer:* Std  
*Internet Fax:* No      *Network Scanner:* No  
*Network Fax:* No      *PC Scanner:* Std  
*PC Fax:* Std

**CONNECTIVITY SPECIFICATIONS**

*Operating System Support:* Win 9.x, 2000, Me, NT 4.0  
*Parallel Interface:* Std  
*PC Fax/Print/Scan:* Yes/Yes/Yes  
*Serial Interface:* No  
*PC Fax/Print/Scan:* No/No/No  
*USB Interface:* Std  
*PC Fax/Print/Scan:* Yes/Yes/Yes  
*Network Interface:* Opt Ethernet  
*Interface Type:* 10/100 BaseT (AXIS)  
*LAN Fax/Print/Scan:* No/Yes/No  
*Networks Supported:*  
*NetWare:* Yes  
*Windows NT:* Yes  
*AppleTalk:* No  
*UNIX:* Yes  
*AS/400:* No  
*Other:*

**PC/NETWORK FAX SPECIFICATIONS**

*Modem Speed:* 33.6 Kbps  
*Software (Std or Opt):* Std PC fax software  
*Program Fax Via PC:* Yes  
*RX to PC Memory:* Yes  
*RX w/PC Off:* Yes  
*Class 1-/2- Compatible:* No/Yes  
*Color Fax RX/TX:* No/No  
*LAN Fax Support:* No  
*Connection Type:* No  
*Type:* No  
*Internet Fax RX/TX:* No/No  
*Dial-up:* No  
*Network Connection:* No  
*Other:*

*Internet Service Provider:* No  
*Other:*

**CONNECTIVITY OPTIONS**

*Network interface (AXIS):* \$299

**PRINTER SPECIFICATIONS**

*Engine Mfr & Model:* Brother  
*Print Speed (Black):* 15 ppm  
*Print Speed (Color):* Not applicable  
*Print Resolution (Black):* 600 x 600 dpi  
*Print Resolution (Color):* Not applicable  
*Processor/Bits/MHZ:* RISC Processor/32/100  
*PDL/PCL:* Windows GDI PCL 5 e  
*Controller Manufacturer:* Brother  
*LAN Print Speed/Res:* 15 ppm/600-dpi  
*Std/Max Memory:* 8 MB/Shared  
*Other:*

**SCANNER AND IMAGE MANAGEMENT SPECIFICATIONS**

*Scan Speed (Black):* 2 spp  
*Scan Speed (Color):* Not applicable  
*Max Resolution (Black):* 300 x 600 dpi  
*Max Resolution (Color):* Not applicable  
*TWAIN/ISIS Compatible:* Yes/No  
*Scan/Image Software:* Std ScanSoft PaperPort  
*OCR Software:* Std ScanSoft TextBridge  
*File Mgmt Software:* Std ScanSoft TextBridge  
*Scan-To-E-Mail:* Yes  
*Other:*

**CONTENTS**

Base unit; power cord; telephone line cord; full-yield toner cartridge; autodial key labels; operation manual; receive paper tray; output paper tray; parallel cable

**COMMENTS**

**Info not avail = Info not provided by MFR.** Specs were obtained from manufacturer/distributor and not confirmed by BLI testing.  
 (FAD IMAGE #22056)

Copyright 2003. **WARNING:** This material is copyrighted by Buyers Laboratory Inc. and is the sole property of Buyers Laboratory. Duplication of this proprietary report or excerpts from this report, in any manner, whether printed or electronic (including, but not limited to, copying, faxing, scanning or use on a fax-back system), is illegal and strictly forbidden without written permission from Buyers Laboratory. Violators will be prosecuted to the fullest extent of the law. To purchase reprints of any BLI reports or articles, contact BLI at (201) 488-0404. Buyers Laboratory Inc., 20 Railroad Avenue, Hackensack, NJ 07601. Or visit our Web site at [www.buyerslab.com](http://www.buyerslab.com).





## Free Manuals Download Website

<http://myh66.com>

<http://usermanuals.us>

<http://www.somanuals.com>

<http://www.4manuals.cc>

<http://www.manual-lib.com>

<http://www.404manual.com>

<http://www.luxmanual.com>

<http://aubethermostatmanual.com>

Golf course search by state

<http://golfingnear.com>

Email search by domain

<http://emailbydomain.com>

Auto manuals search

<http://auto.somanuals.com>

TV manuals search

<http://tv.somanuals.com>