

# PCIe Audio Card

Model: SD-PEX63081



**User Manual  
Ver. 2.00**

**Chipset: CMedia CM8828, CM9882A**

## Product Introduction

This Multi-Channel PCI-Express Sound Card is a versatile 24bit multi-channel audio controller that brings your computer at par with the fidelity of state-of-the-art home audio electronics. It provides surround sound output and crystal-clear audio quality for playback and recording. Some of the typical applications for this part are computer based high fidelity multi-channel audio, home theater and entertainment, cost effective multi-track audio, PC-based data acquisition, waveform generation.

## Features & Specifications

- Based on CMedia CM8828 Multi-channel audio processor
- Based on CMedia9882A 8-Channel HDA Codec
- Complies with PCI-Express base Specification Rev. 1.1
- Sampling Rate up to 24-bit and 192 KHz for both playing back and recording
- Up to 8-Channel analog outputs
- 2-Channel analog inputs
- 2-Channel microphone input
- SPDIF & Coaxial combo input / output
- Supports swapping of Center and LFE audio output channel
- Integrated de-pop function for eliminating pop noise during PC power-up and shutdown
- Supports ASIO and WASAPI
- Supports Standard Profile or Low Profile chassis

## **Package Contents**

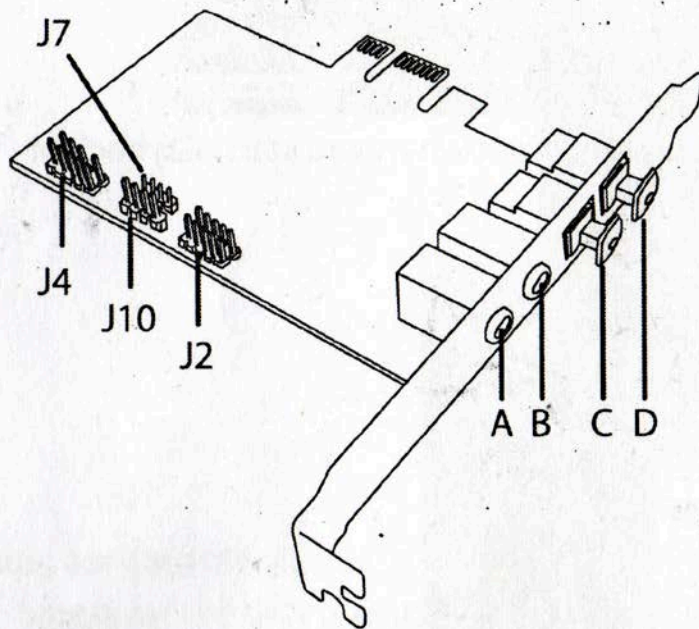
- 1 x Multi-Channel PCI-Express Sound Card – Main Card
- 1 x Multi-Channel PCI-Express Sound Card – Daughter Card (optional)
- 1 x 10-pin flat cable (optional)
- 1 x User Manual
- 1 x Driver CD

## **System Requirements**

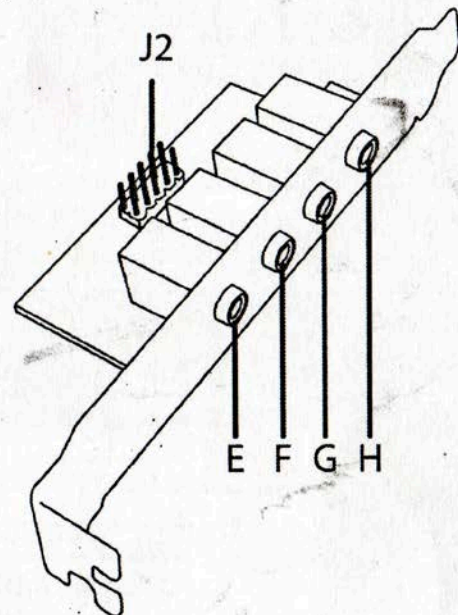
- Supports Windows® XP/Vista/7/8/ME/2000/Server 2003/2008/8

## Product Overview

### Main Card



### Daughter Card



A. Analog Left/Right Line in

B. Analog Left/Right microphone input

C. S/PDIF optical input: Connect to S/PDIF optical output of another audio device

D. S/PDIF optical output: Connect to digital amplifier or surround sound decoder

E. Front Left/Right analog output

F. Side Surround left/Right analog output

G. Center/Subwoofer analog output

H. Rear Surround Left/Right analog output

J2. Two 10-pin headers for connecting to the daughter card<sup>1</sup>

J4. 9-pin header for connecting to Intel HD front panel audio

J10. Analog CD-IN port (Signal: L-G-G-R)

J7. Analog CD-IN port (Signal: G-R-G-L)

<sup>1</sup> The red color coded line on the cable should connect to the pin number 1 which is represented by a triangle silkscreen next to the header

## Hardware Installation

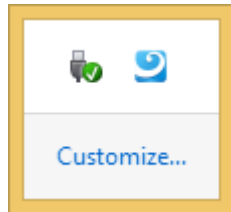
1. Turn off the power to your computer
2. Unplug the power cord and remove your computers cover
3. Locate an empty PCIe slot on the motherboard and remove the slot bracket.  
Save the bracket and screw for later.
4. To install, carefully align the cards bus connector with the selected PCIe slot on the motherboard. Push the board down firmly.
5. Fasten the card to the computer case with the bracket screw you previously removed.
6. Replace the computer cover and reconnect the power cord
7. Connect your speakers, audio source, or microphone to the card ports using 3.5mm audio jacks (not included in the package). If you use a pair of stereo speakers (2 channels) or a stereo headphone, please connect it to the “Front-Out” socket.
8. If the Intel front panel audio is connected you can switch the audio output through the front panel.

## Application Software and Driver Installation

*Installing driver and Xear Audio Center for all supported Windows OS:*

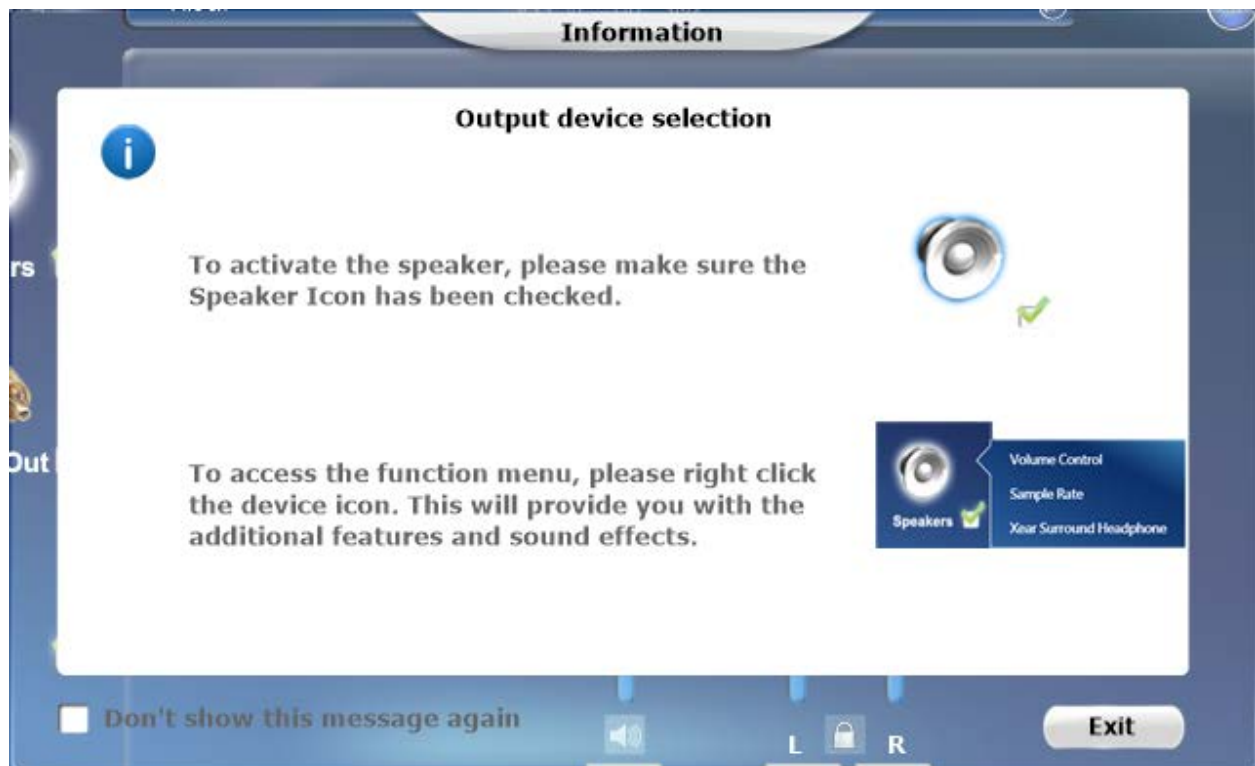
1. Start Windows and insert the driver CD into the CD-ROM drive.
2. Go to the driver CD folder C:\CMedia\CM8828, the double click “**Setup.exe**”
3. The Install Shield Wizard software will guide you through the steps until installation is complete.
4. You may be required to reboot the system after the software installation.

5. The Xear Audio Center icon will show up on the Windows task bar. This indicates that the sound card has been properly installed.
6. To access the Xear Audio Center functions simply click on the icon.

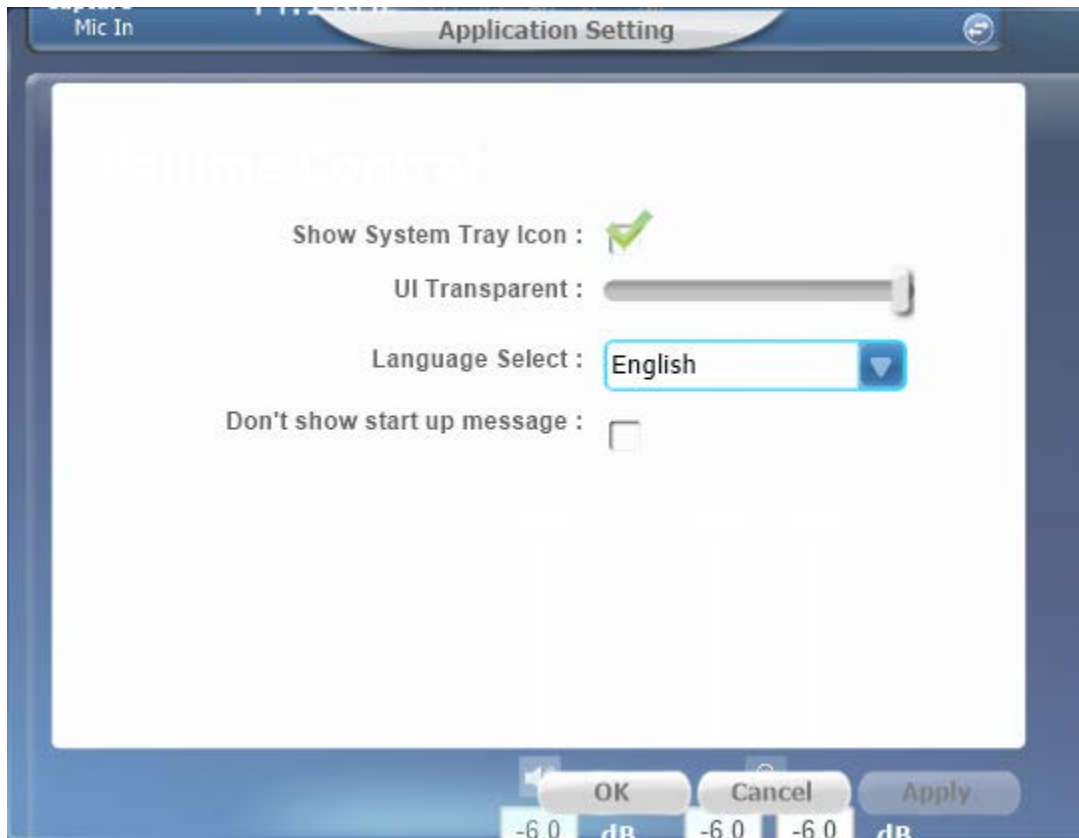


## Xear Audio Center Software

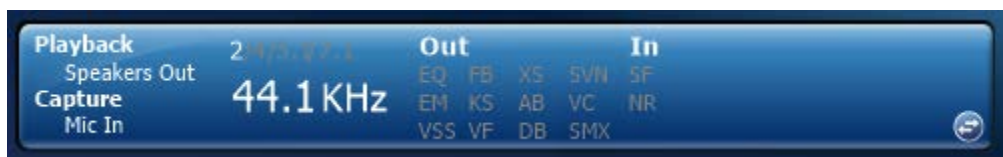
1. Click on the Xear icon in the Windows task bar. A prompt for the software will appear notifying you of some important information. If you do not wish to read it again check the box 'Don't show this message again.'



2. Click on the setting icon, you will see the application setting showed below:



3. The Status Panel at the top will show you the audio I/O channel, sample rate, and if the headphones are on/off.



4. The Status Panel can be switched to the Profile Panel. There are six profile modes which can be selected: FPS, HiFi, Movie, Music, RTS, and Racing mode.



5. Click on the EX icon to enable/disable Xear 3D EX.



6. Click on the ASIO Icon to change the buffer size. This will take effect the next time you start a playback or recording.





7. There are seven kinds of audio I/O selections in the left panel bar. They are: speakers, headphones, S/PDIF-Out, Mic, Line-In, S/PDIF-In, and Stereo Mix. The Headphone box will appear when the Intel HDS front panel is connected, otherwise it will not appear.



8. Right-click the audio I/O icon to get additional features and sound effects.



9. Right click the Speakers Icon and select Speaker Settings. This will allow you to set the speaker settings from four options: Stereo, Quadraphonic, 5.1 Surround, and 7.1 Surround. You can also swap LFE/Center Channels on this interface.



10. Play around with all the features and effects that this software has to offer.

## FAQ

**Question:** I installed the card but it is not recognized in my system?

**Answer:** Try reseating the card into another PCIe slot if available. If that fails try updating the motherboard/BIOS. Also ensure that any optional system updates have been applied.

**Question:** I installed the card and the drivers but the device is still not working?

**Answer:** Uninstall the device and drivers from the system. Reinstall the device and, manually install the drivers.

**Question:** I try to install the drivers for the device but receive a Code: 10 error?

**Answer:** This indicates a failure with the drivers being installed. Please download the latest drivers of the device and try again.

**Question:** The device installed properly but keep disconnecting and reconnecting?

**Answer:** Certain device will install properly yet act buggy. To remedy this problem download and, install the latest drivers for the device from the manufacturer website.

**Question:** Do I need to install the daughter card with the main card?

**Answer:** No, you can use the main card as a standalone.

*Note: Using only the main card will not allow all features to be present.*

## **Version Information**

Version: 2.0

Date Updated: 3/20/2014

Changes/Fixes:

- Compiled manual information into .pdf format.
- Cleaned up wording and text throughout the previous 1.0 manual.
- Added in Envy Control Panel pictures
- Added troubleshooting guides for installation of drivers / control panel
- Added chipset information to the document.
- Added FAQ of general information.

## Free Manuals Download Website

<http://myh66.com>

<http://usermanuals.us>

<http://www.somanuals.com>

<http://www.4manuals.cc>

<http://www.manual-lib.com>

<http://www.404manual.com>

<http://www.luxmanual.com>

<http://aubethermostatmanual.com>

Golf course search by state

<http://golfingnear.com>

Email search by domain

<http://emailbydomain.com>

Auto manuals search

<http://auto.somanuals.com>

TV manuals search

<http://tv.somanuals.com>