

BELKIN®

2-Port USB Print Server

Share your USB printers with your
networked computers



User Manual



Table of Contents

1 Introduction	1
Home Networking Overview	1
2 Overview	6
Product Features	6
Applications and Advantages	6
System Requirements	6
Package Contents	6
Knowing your Print Server	7
3 Connecting the Print Server Using the Setup Wizard	9
4 Setup for Advanced Users	11
5 Web Configuration	15
Accessing Web Configuration Menus	15
Home Page	16
Login Screen	17
IP Address	17
Print Server Configuration	18
Upgrade Firmware	18
System Settings (Change Password)	19
6 Printing to Multiple Servers	20
Adding a Belkin Port Monitor (Advanced Menu)	20
7 Belkin Port Monitor Advanced Menu	23
Opening the Belkin Port Monitor Advanced Menu	23
Adding a Second Belkin Port Monitor and configuring it for a Specific Print Server	24
8 Using the Print Server for FTP Printing	26
Sending Print Jobs to Printers Connected to the Print Server using FTP	27
9 Troubleshooting	30
10 Information	41

Introduction

Thank you for purchasing the Belkin USB Print Server. Now you can share your USB-equipped printers with your wired network. The Belkin USB Print Server allows you to connect up to two USB printers directly to your network, eliminating the need to have a dedicated PC for printing. It offers an easy installation and setup that has you sharing printers in minutes. Please read through this manual completely to be sure that you are getting the most from your new Belkin USB Print Server.

Belkin home networking lets you easily enjoy these additional advantages

- Share one high-speed Internet connection with all the computers in your home
- Share resources, such as files, and hard drives among all the connected computers in your home
- Share a single printer with the entire family
- Share documents, music, video, and digital pictures
- Store, retrieve, and copy files from one computer to another
- Simultaneously play games online, check Internet e-mail, and chat

What types of connections are used to create a home network?

The two common ways to set up a home network are with wireless and wired technologies.

Advantages of a wireless network:

- **Mobility** – you'll no longer need a dedicated "computer room"—now you can work on a networked laptop or desktop computer anywhere within your wireless range
- **Easy installation** – Belkin Easy Installation Wizard makes setup simple
- **Flexibility** – set up and access printers, computers, and other networking devices from anywhere in your home
- **Easy Expansion** – the wide range of Belkin networking products let you expand your network to include devices such as printers and gaming consoles
- **No cabling required** – you can spare the expense and hassle of retrofitting Ethernet cabling throughout the home or office
- **Widespread industry acceptance** – choose from a wide range of interoperable networking products

Introduction

Wireless Networking Speed

Currently there are three levels of wireless networking standards, which transmit data at very different maximum speeds. Each is based on the designation 802.11x, so named by the IEEE, the board that is responsible for certifying networking standards. The most common wireless networking standard, 802.11b, transmits information at 11Mbps; 802.11a and 802.11g work at 54Mbps. See the following chart for more detailed information.

Wireless Comparison

Wireless Technology	802.11b	802.11g	802.11a
Speed	11Mbps	54Mbps	54Mbps
Frequency	Common household devices such as cordless phones and microwave ovens. May interfere with the 2.4GHz unlicensed band	Common household devices such as cordless phones and microwave ovens. May interfere with the 2.4GHz unlicensed band	5GHz - uncrowded band
Compatibility	Compatible with 802.11g	Compatible with 802.11b	Incompatible with 802.11b or 802.11g
Range	Depends on interference - typically 50-300 ft. indoors	Depends on interference - typically 50-300 ft. indoors	Less interference - range is typically 50-100 feet
Adoption	Mature - widely adopted	Expected to continue to grow in popularity	Slow adoption for consumers - more popular in business
Price	Inexpensive	More expensive	Most expensive

Introduction

Advantages of a wired network:

- **Low cost** – on average, wired networking devices are less expensive than wireless networking devices
- **Faster speeds** – common speed is 100Mbps with recent technology providing up to 1000Mbps
- **Flexibility** – set up and access printers, computers, and other networking devices from anywhere in your home
- **Better range** – wired Ethernet technology provides distance of up to 328 feet (without a repeater), while wireless range is typically 150 to 200 feet
- **Existing wired infrastructure** – because of the maturity of wired technology, some new homes are built with an Ethernet cabling infrastructure
- **Widespread industry acceptance** – a wide range of interoperable networking products

Combining wired and wireless technologies.

Since wired technology has been around longer, you might already own some wired networking products. In this case, consider combining the two technologies to create a super-efficient, cost effective home network.

Introduction

Placement of your Wireless Networking Hardware

Please note that to ensure the performance of your wireless network, you must carefully plan the positioning of your wireless networking hardware.

Examples of Wireless Networking Hardware:

- Wireless Router
- Wireless Range Extender/Access Point
- Wireless Notebook Network Card
- Wireless Desktop Network Card
- Wireless USB Network Adapter
- Wireless USB Print Server
- Wireless Ethernet Adapter

Wireless technology is radio-based, which means connectivity and throughput performance between devices decreases when the distance between devices increases. Other factors that will cause signal degradation (metal is generally the worst culprit) are obstructions such as walls and appliances. As a result, the typical indoor range of your Wireless devices will be between 100–200 feet.

The Wireless Router is the central connection point of the network, with all wireless clients (i.e. wireless notebook network cards, wireless desktop network card, and wireless USB adapters) attached to it. In order to achieve the best wireless network coverage for your connected computers, your Router should be placed as close as possible to the center of the area that you want to cover with antennas pointing UP. In multistory homes, place the Router on a floor that is as close to the center of the home as possible; this may mean placing the Router on an upper floor. Wireless devices work best in a line-of-sight situation where there are no obstacles between the wireless client and the Router.

Introduction

Try to avoid placement of wireless devices near:

- 2.4GHz cordless phones
- Microwave Ovens
- Refrigerators
- Washer/Dryer
- Metal Cabinets
- Metallic-based UV tinted windows

Note: While the above items can affect network performance, your wireless network still will function, although probably not at its maximum effectiveness.

For more information regarding our networking products visit our website at www.belkin.com/networking or call us at **877-736-5771**.

Overview

Product Features

- Integrated, easy-to-use Print Server Setup Easy Installation Wizard
- Ethernet interface, for operation in virtually all Ethernet networks
- Easy installation and use
- LEDs: Power, Ethernet link, Status, and Error

Applications and Advantages

- **Temporary LANs for special projects or peak time** Sets up temporary networks such as at trade shows, exhibitions, and construction sites, which need networks on a short-term basis; also companies that need additional printers for a peak activity period.
- **SOHO (Small Office/Home Office) networking needs** Provides easy and quick small network installations that SOHO users need

Product Specifications

Standard:	802.3 IEEE, 802.3u IEEE
Network Interface:	1 LAN, 2 USB
Power Consumption:	Input: 100-110v~0.4A, 50-60Hz Output: 5v, 2.0A
Operating Temperature:	0 – 55 degrees C
Storage temperature:	-25 – 70 degrees C
Humidity:	Max. 95% (non-condensing)

System Requirements

- Printer compatible with USB 1.1
- USB cable for each printer
- PC with Windows® 98SE, Me, 2000, XP

Package Contents

- Belkin USB Print Server
- Installation Software CD
- User Manual
- Quick Installation Guide
- Ethernet Cable

Overview

Knowing your Print Server



(a) PowerLED

- Solid: Server is ON
- Off: Server is OFF

(b) LAN LED

- Solid: Connected to Ethernet
- Off: Ethernet disconnected
- Blinking: Transferring data
- Green: 10Mbps device connected
- Amber: 100Mbps device connected

(c) Status LED

- Solid: OK
- Blinking: Attempting to obtain IP address while booting, or printing in progress

(d) Error

- Solid (Red): Printer missing or printer error
- Off: OK

Overview



(a) Printer 1/Printer 2

These ports are used to connect one or two USB printers.

Note: These ports cannot be expanded using a USB hub.

(b) Ethernet Port

This port is used to connect the Print Server to an Ethernet network via CAT5 cable.

(c) Reset/Test Button (3 functions)

Print Page: For most printers, this function results in a test page to be printed. The test page will include Print Server settings including the IP address and other information that might be handy for troubleshooting the Print Server. To print test page, depress the Reset/Test button momentarily.

WARNING: Some printers do not support this function.

Reset: To reset or reboot the Print Server to existing settings, depress the Reset/Test button for five or more seconds.

Restore Factory Defaults: To restore the Print Server to factory defaults, depress the Reset/Test button for 10 seconds while powering up the Print Server.

Connecting the Print Server Using the Setup Wizard

Make sure that each computer can print to the USB printer before installing the USB Print Server.

1. Connect your printer directly to each computer on the network and install USB printer drivers (see your printer documentation for detailed instructions). The Print Server requires that the correct drivers are loaded and working (printing) before the Print Server is installed.

When installing printer drivers, install as:

- Local printer, not network printer
- USB port
- Not to be shared
- Default printer for all printing (if desired)

Note: Verify functionality on each computer by printing a test page prior to moving to the next installation step.

2. Insert the Print Server Setup Wizard CD into your CD-ROM drive on the first PC.

Note: If the Print Server Setup Wizard does not start up automatically, select your CD-ROM drive from “My Computer” and double-click on the file named “Setup” on the CD-ROM.

3. The Wizard will start.

Note: The Wizard will remind installer that step 1 needs to be done before continuing. If step 1 is complete, click “Next” to proceed. If not, please stop Wizard and complete step 1 for all computers.



Connecting the Print Server Using the Setup Wizard

4. Follow instructions from each screen of the Print Server Setup Wizard.
5. When you see the following screen, installation is complete for that PC. Click “Quit” and remove the CD from your computer.



Important: Repeat steps 2-5 for each additional PC you would like to print from.

6. Enjoy your Print Server!

Setup for Advanced Users

1

2

3

4

section

5

6

7

8

9

10

Install Print Drivers

Be sure to install the necessary print drivers on each computer that will be accessing the Print Server.

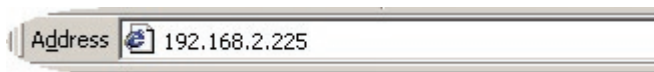
Set Up Print Server

1. Plug your printer's USB cable (power on) into the Print Server.
2. Connect the included Ethernet cable into the Print Server and to an available Ethernet port on your router or switch.
3. **Power up the print server.** Allow approximately one minute for the Print Server to boot.
4. Verify that the Status light is illuminated and that the Error light is not illuminated.
5. Determine the Print Server's IP address, using one of the following methods:
 - a) New Print Servers are configured to receive IP addresses dynamically. If your network has a DHCP server, the Print Server will obtain an IP address from your network. If the DHCP server supports a client list, the client list will list the IP address assigned to the Print Server. If a DHCP server is not available, after 1.5 minutes the Print Server will revert to 192.168.2.253.
 - b) If the Print Server has been configured previously, then it will have been set to a static IP address that could be different for every network.

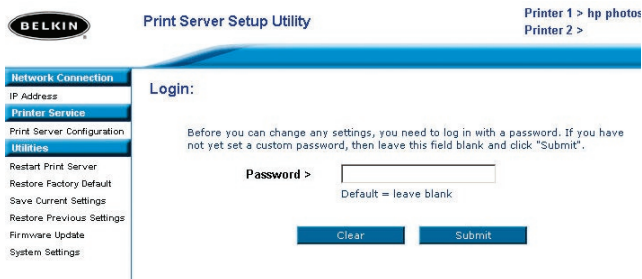
Note: Restoring factory defaults on the Print Server by holding in the reset button for 10 seconds while repowering the Print Server will restore the IP address to dynamic.
 - c) Run the program "PSF.exe" from the Installation CD. This will find the IP address and link automatically to the web-based management interface.
 - d) Go to the last step of the Print Server Installation Wizard, which has an Advanced button that finds the IP address and links automatically to the web-based management interface.

Setup for Advanced Users

6. Verify that the computer is in the same subnet as the Print Server (The first three octets of the IP addresses are the same).
7. Type the Print Server's IP address into your Internet browser from any computer. For example, if your IP address is 192.168.2.225, type "192.168.2.225" (do not type in anything else such as "http://" or "www"). Then press the "Enter" key.



8. Clicking the "Login" button or clicking on any one of the links on the home page will take you to the login screen. The Print Server ships with no password entered. In the login screen, leave the password blank and click "Submit" to log in.

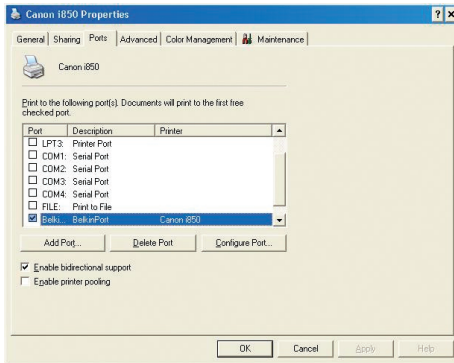


9. Set the IP address for the Print Server by clicking "IP Address" (see "Web Interface – IP Address" for more info).
10. Cycle power on the Print Server to reboot it to the new configurations.

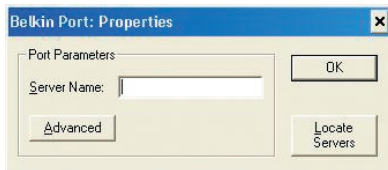
Setup for Advanced Users

Configure Computers to Print to the Print Server

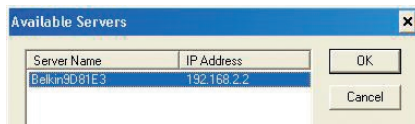
1. Install Port Monitor software on each computer by running “instport.exe” from the CD.
2. Configure the Belkin Port Monitor on each computer printer driver to point to the correct Print Server as follows:
 - a) In Windows, select the printer’s properties for the printer connected to the Print Server and select the “Port” tab, select the Belkin port, and click “Configure Port...”.



- b) On the “Belkin Port: Properties” window, click “Locate Servers”.

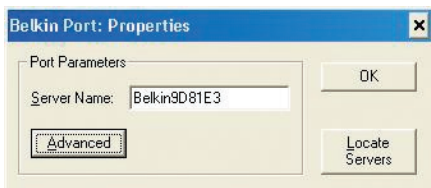


- c) On the “Available Servers” window, select the Print Server you want to print to.

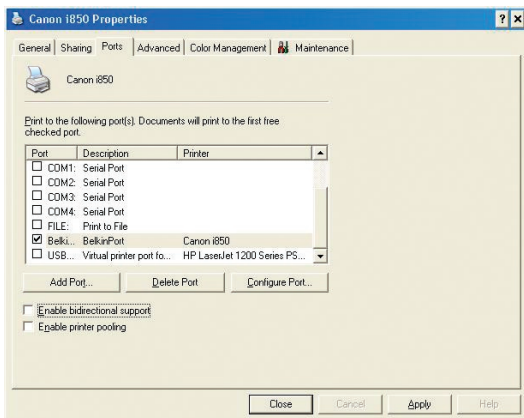


Setup for Advanced Users

- d) Click “OK” to close. On the “Belkin Port: Properties” window, the name of the Print Server you selected will appear. Click “OK” to close.



- e) On the Ports tab, disable bidirectional support if currently enabled. Click “Apply”.



- f) Click “OK” to close.
- g) If there is a second printer connected to the Print Server, select the properties for that printer and click the “Ports” tab; select the Belkin port that was just configured.

Note: If more than one Print Server is available on your network, refer to the section “Printing to Multiple Print Servers”.

Web Configuration

Accessing the Web Configuration Menus

1. Connect the included Ethernet cable into the Print Server and to an available Ethernet port on your router or switch.
2. Power up the Print Server. Allow approximately one minute for the Print Server to boot and obtain an IP address.
3. Determine the Print Server's IP address, using one of the following methods:

a) New Print Servers are configured to receive IP addresses dynamically. If your network has a DHCP server, the Print Server will obtain an IP address from your network. If the DHCP server supports a client list, the client list will list the IP address assigned to the Print Server. If a DHCP server is not available, after 1.5 minutes the Print Server will revert to 192.168.2.253.

b) If the Print Server has been configured previously, then it will have been set to a static IP address that could be different for every network.

Note: Restoring factory defaults on the Print Server by holding in the reset button for 10 seconds while repowering the Print Server will restore the IP address to dynamic.

c) Run the program "PSF.exe" from the Installation CD. This will find the IP address and link automatically to the web-based management interface.

d) Go to the last step of the Print Server Installation Wizard, which has an Advanced button that finds the IP address and links automatically to the web-based management interface.

1

2

3

4

5

6

7

8

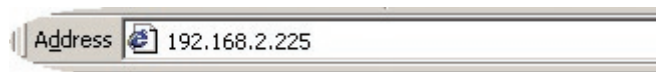
9

10

section

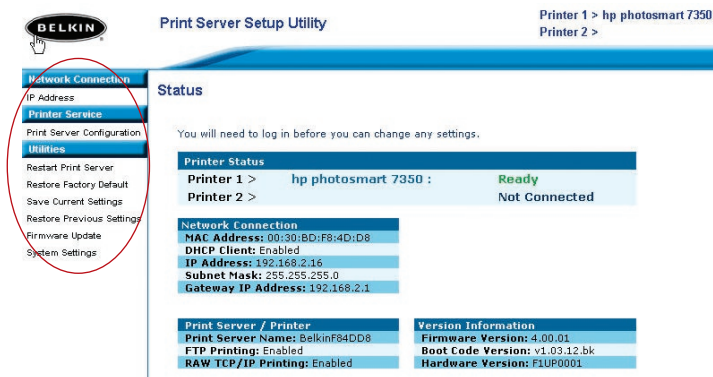
Web Configuration

4. Type the Print Server's IP address into your Internet browser from any computer. For example, if your IP address is 192.168.2.225, type "192.168.2.225" (do not type in anything else such as "http://" or "www"). Then press the "Enter" key. P74390-A page 12



Web Interface – Home Page

After entering the IP address of the Print Server, you will see the screen illustrated below. This page shows most critical configuration information for the Print Server. To modify settings, choose a topic from the menu on the left of the screen.



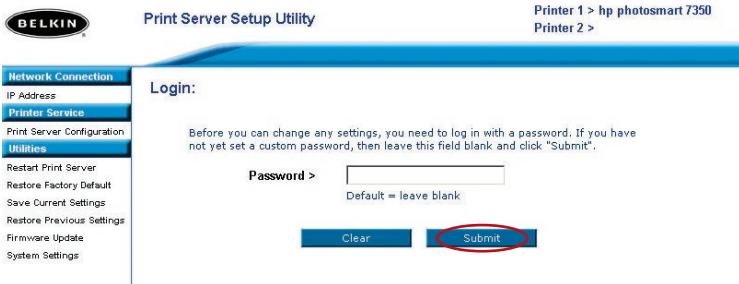
The screenshot shows the "Print Server Setup Utility" web interface. At the top left is the Belkin logo. The title "Print Server Setup Utility" is centered, and "Printer 1 > hp photosmart 7350" and "Printer 2 >" are on the right. A left-hand menu is circled in red, listing options: Network Connection, IP Address, Printer Settings, Print Server Configuration, Utilities, Restart Print Server, Restore Factory Default, Save Current Settings, Restore Previous Settings, Firmware Update, and System Settings. The main content area is titled "Status" and contains a message: "You will need to log in before you can change any settings." Below this are three sections: "Printer Status" showing "Printer 1 > hp photosmart 7350 : Ready" and "Printer 2 > Not Connected"; "Network Connection" showing "MAC Address: 00:30:BD:F8:4D:D8", "DHCP Client: Enabled", "IP Address: 192.168.2.16", "Subnet Mask: 255.255.255.0", and "Gateway IP Address: 192.168.2.1"; and "Print Server / Printer" and "Version Information" showing details like "Print Server Name: BelkinF84DD8", "FTP Printing: Enabled", "RAW TCP/IP Printing: Enabled", "Firmware Version: 4.00.01", and "Boot Code Version: v1.03.12.bk".

Web Configuration

1
2
3
4
5 section
6
7
8
9
10

Web Interface – Login Screen

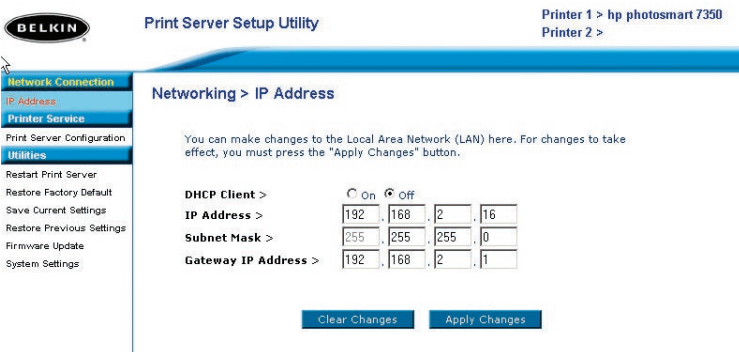
Clicking on any menu item will cause a login prompt to appear. If a password has been set previously, enter it here. New Print Servers ship without passwords; if this is the case, click “Submit” to continue.



Web Interface – IP Address

This menu allows the user to set a Static IP address, or to set the Print Server to obtain an IP address automatically as a DHCP client. Although Belkin designs the Print Server to obtain an IP address automatically, running the Wizard will change the IP address to static. Static is the recommended method of operation, since the computer will be configured to print to a specific IP address which, if changed, would make the Print Server inoperable.

Note: When choosing an IP address manually, be sure to choose a unique IP address in the same domain (first three sets of digits the same) as the gateway of your network.



Web Interface – Print Server Configuration

This menu allows the user to modify the following parameters:

- **Print Server Name:** This field identifies the Print Server by name, and each Print Server has a unique name. Unique names are critical in a network with more than one Print Server. If the user wishes to change the name, make sure to use unique names.
- **Raw Printing:** This feature allows clients to print to the Print Server using the standard TCP/IP printer port built into Windows XP and 2000 instead of the Belkin Port Monitor. Using Raw Printing requires the user to configure all port parameters manually and is not recommended for users unfamiliar with TCP/IP printing.
- **FTP Printing:** This feature enables the printer to receive print jobs sent by FTP (see FTP Printing for detailed instructions). Disabling this feature will prevent FTP jobs.

The screenshot shows the Belkin Print Server Setup Utility web interface. At the top left is the Belkin logo. The main title is "Print Server Setup Utility". On the right, it says "Printer 1 > hp photosmart 7350" and "Printer 2 >". A blue navigation bar contains a menu with the following items: "Network Connection", "IP Address", "Printer Service", "Print Server Configuration" (which is highlighted in blue), "Utilities", "Restart Print Server", "Restore Factory Default", "Save Current Settings", "Restore Previous Settings", "Firmware Update", and "System Settings". The main content area is titled "Print Service > Print Sever Configuration". It contains the following sections:

- Print Sever Name:** A label "Print Sever Name >" followed by a text input field containing "BelkinF84DD8".
- LPR Printing:** A section header followed by the text "This is always enabled. Belkin port uses LPR printing protocol."
- Raw TCP/IP Printing:** A section header followed by the text "Raw TCP/IP Printing protocol uses 9100 for printer 1 and 9101 for printer 2." Below this is a checkbox labeled "Enable Raw TCP/IP Printing >" which is checked.
- FTP Printing:** A section header followed by the text "Print server accepts anonymous FTP to send file to printer(s)". Below this is a checkbox labeled "Enable FTP Printing >" which is checked.

At the bottom of the configuration area are two buttons: "Clear Changes" and "Apply Changes".

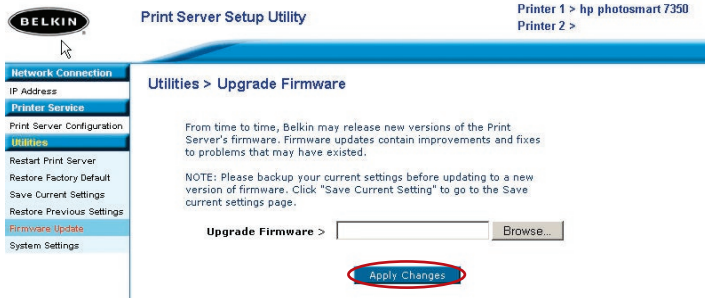
Web Interface – Upgrade Firmware

This menu allows the user to upgrade the Print Server's firmware. Before running this application, download the new firmware from the Belkin website at www.belkin.com. Be careful to take note of the location of the downloaded file on your computer's hard disk. After downloading, click "Browse" on the

Web Configuration

screen shown below, select the file name of the downloaded firmware, then click “Apply Changes”. The firmware upgrade will take a few minutes.

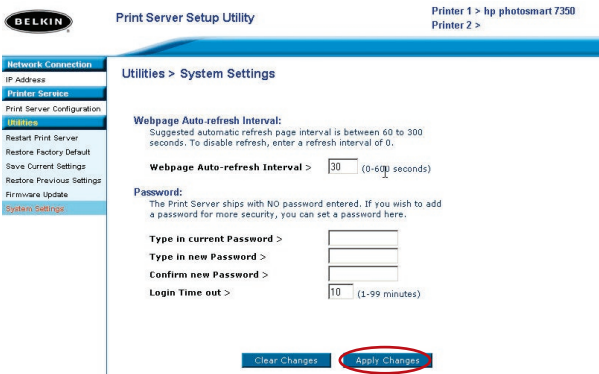
Note: Do not interrupt the process by removing power from the Print Server or you could cause permanent damage to the device.



Web Interface – System Settings (Changing Password)

The Print Server ships with NO preset password. If you wish to set a password for greater security, be sure to choose a password that you will remember, and make a note of it. This utility will require you to enter the new password twice. If you are entering a password for the first time, leave the “current” password field blank. Press “Apply Changes” when done.

The Web page auto-refresh interval setting can be changed in this menu. If you want a slower or faster interval, choose a number in the range and press “Apply Changes”.



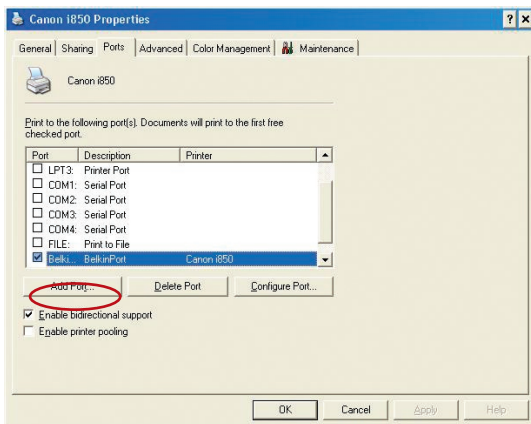
1
2
3
4
5 section
6
7
8
9
10

Printing to Multiple Print Servers

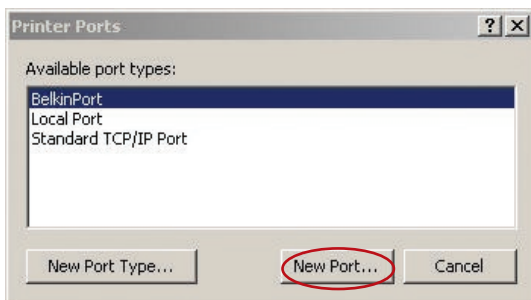
If more than one Print Server is available on your network, and some computers need to be able to print to more than one Print Server, you will need to install the included Belkin Port Monitor (a virtual printer port) software on your PC. The Belkin Port Monitor can then be configured to select different Print Servers on your network to handle specific print jobs.

Adding a Belkin Port Monitor and Configuring It for a Specific Print Server

1. In Windows, select the printer's properties and select the "Ports" tab.
2. Click "Add Port".



A window showing the printer ports installed on the PC will open. Select "Belkin Port" and, in the "Printer Ports" window, click "New Port".



Printing to Multiple Print Servers

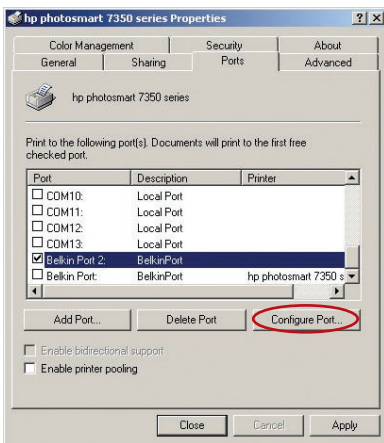
1
2
3
4
5
6
7
8
9
10

section

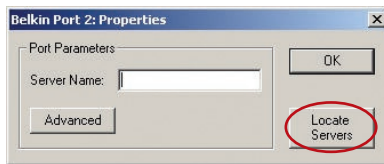
3. In the “Enter New Port” window, enter a unique name for the port and click “OK”.



4. Click “Close” on the “Printer Ports” window.
5. On the “Ports” tab, select the newly created port; click “Configure Port”.

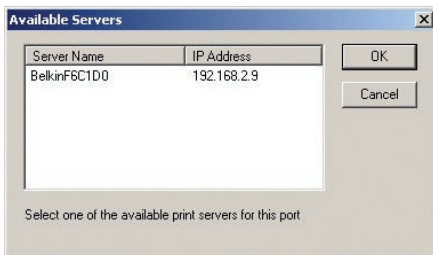


6. On the next window (Belkin Port 2: Properties), click the “Locate Servers” button.

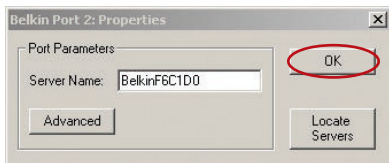


Printing to Multiple Print Servers

7. On the “Available Servers” window, select the Print Server to which you want to print.



8. Click “OK” to close. In the “Belkin Port 2: Properties” window, the name of the Print Server you selected will appear in the window.
9. Click “OK” to close.



10. Repeat these steps for each additional Print Server on your network.

Warning: When configuring the Port Monitor to send jobs to a specific Print Server, make sure that the correct port is selected for the printer driver in Windows and that the corresponding printer is actually connected to the Print Server that the port is indicating. Mismatching printer drivers, ports, and Print Servers will result in failed print jobs or error prints of multiple pages of indiscernible characters.

Belkin Port Monitor Advanced Menu

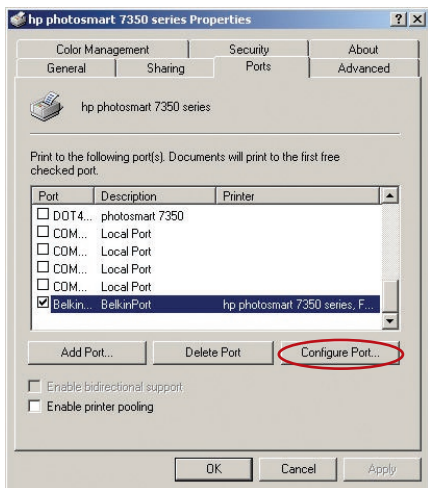
1
2
3
4
5
6
7
8
9
10

section

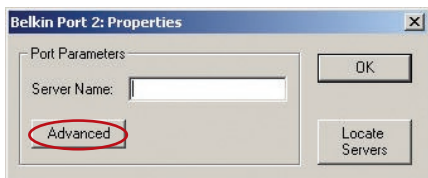
In most cases, the Belkin Port Monitor (a virtual printer port) software will be automatically installed and configured by the Print Server Setup Wizard. Some advanced users may choose to manually configure the Belkin Port Monitor software. This can be achieved by using the Belkin Port Monitor's Advanced Menu, which allows the user to enter a specific Print Server's IP address and to designate a specific printer or "queue" for print jobs connected to that Print Server. The Advanced Menu features help when there is more than one Print Server available on your network, and when print jobs fail because the Port Monitor cannot determine the name of the printer.

Opening the Belkin Port Monitor Advanced Menu

1. On the "Available Servers" window, select the Print Server to which you want to print.



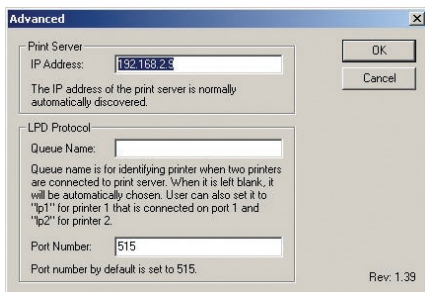
2. In the "Belkin Port: Properties" window, click the "Advanced" tab.



Belkin Port Monitor Advanced Menu

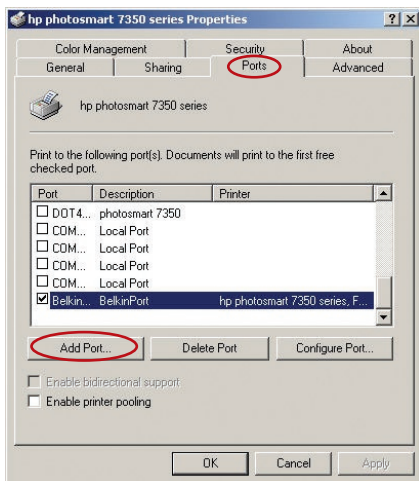
3. The Advanced Menu has fields to enter the Print Server's IP address and the queue name and the port number.

Note: The port number field by default is 515. In most cases, the port number should not be changed.



Adding a Second Belkin Port Monitor and Configuring It for a Specific Print Server

1. In Windows, select the printer's properties and select the "Ports" tab.

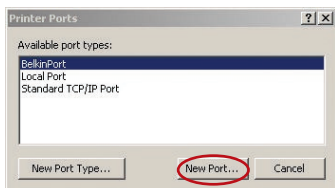


Belkin Port Monitor Advanced Menu

1
2
3
4
5
6
7
8
9
10

section

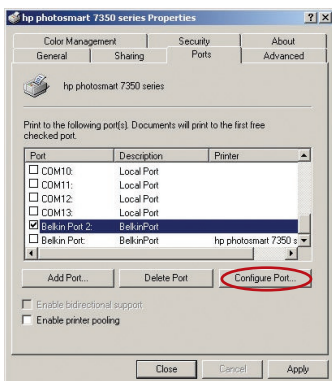
- Click “Add Port”. A window showing the printer ports installed on the PC will open. Select “Belkin Port” and click “New Port”.



- On the “New Port” window, enter a unique name for the port and click “OK”.



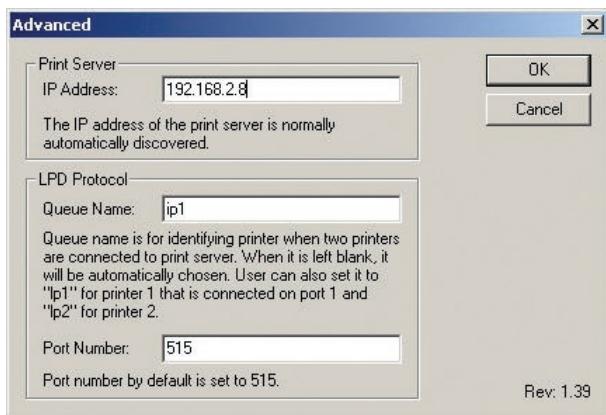
- Click “Close” on the “Printer Ports” window.
- On the ‘Ports’ tab, select the newly created port and click “Configure Port”.



- Click the “Advanced” tab.

Using the Print Server for FTP Printing

7. Add the Print Server's IP address and the queue name of the printer you want to select for the port. The queue name "lp1" will point the port to the printer connected to the printer 1 USB port on the Print Server. The queue name "lp2" will point the port to the printer connected to the printer 2 USB port on the Print Server.



8. Click "OK" to close.

Warning: When manually configuring the Port Monitor to send jobs to a specific printer, make sure that the correct printer driver is selected and that the Port Monitor's queue name corresponds to the USB port that the printer is connected to on the Print Server. Mismatching the drivers or queue names will result in failed print jobs or error prints of multiple pages of indiscernible characters.

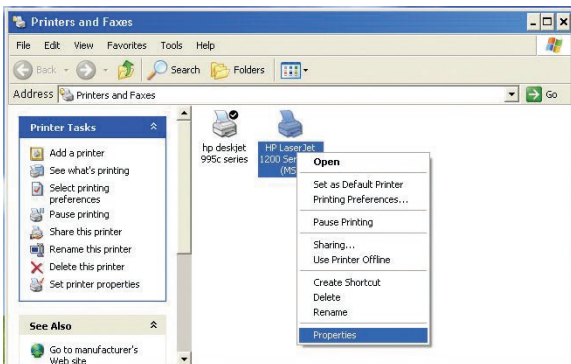
Using the Print Server for FTP Printing

1
2
3
4
5
6
7
8
9
10

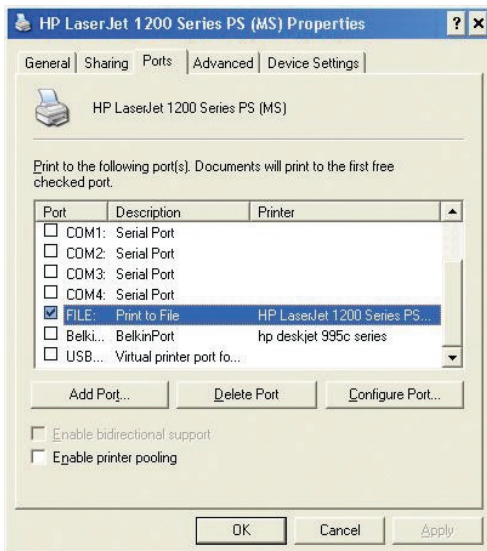
section

Sending Print Jobs to Printers Connected to the Print Server Using FTP

1. In Windows, select the printer's properties.

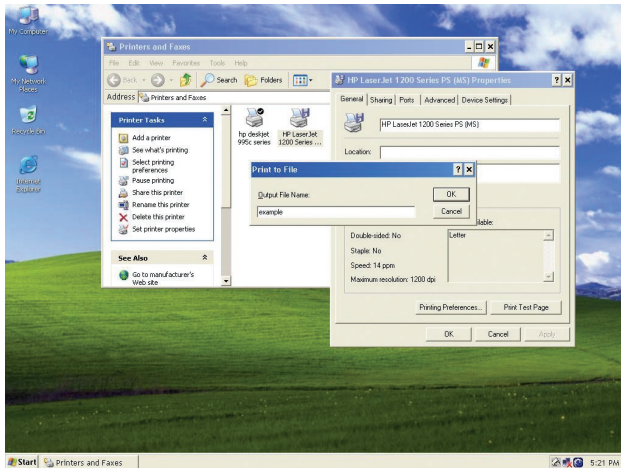


2. Set the printer port to "File", click "Apply".

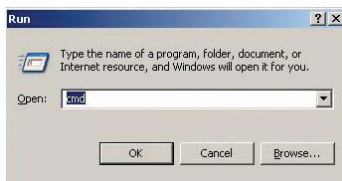


Using the Print Server for FTP Printing

3. Print the document using the printer that you configured. A dialogue box will open prompting you to name the print file. After naming the file, click “OK”. A file will be saved to the user’s default Windows directory (typically “C:\” or “C:\Documents and Settings\”).



4. On the Windows desktop, click “Start>Run” and type in “cmd” for Windows XP and 2000 or “command” for Windows 98SE and Me; click “OK” to open a “Command/MS-DOS Prompt” window.



5. At the prompt, type “ftp” followed by the IP address of the Print Server; press the “Enter” key to create an FTP connection with the Print Server.

Using the Print Server for FTP Printing

1
2
3
4
5
6
7
8
9
10

section

- 6. When the connection is made, the user will be prompted to enter a user name and a password. The user name for the Print Server is “anonymous”; the password should be left blank. After a successful login, a list of the printers connected to the Print Server will appear, followed by simple usage instructions for how to print the file.

```
C:\>ftp 192.168.2.2
Connected to 192.168.2.2.
220 (none) FTP server (GNU inetutils 1.4.2) ready.
User (192.168.2.2:(none)): anonymous
331 Guest login ok, type your name as password.
Password:
230 printer1 --- HP LaserJet 1200
230 printer2 --- HP deskJet 995c
230
230 usage: put FILE printer1 --- send file to printer1
230 usage: put FILE printer2 --- send file to printer2
230 Guest login ok, access restrictions apply.
ftp>
```

- 7. At the prompt, type “put”, followed by the file path and file name, followed by the printer number (for example, put c:\example printer1).

```
C:\>ftp 192.168.2.2
Connected to 192.168.2.2.
220 (none) FTP server (GNU inetutils 1.4.2) ready.
User (192.168.2.2:(none)): anonymous
331 Guest login ok, type your name as password.
Password:
230 printer1 --- HP LaserJet 1200
230 printer2 --- HP deskJet 995c
230
230 usage: put FILE printer1 --- send file to printer1
230 usage: put FILE printer2 --- send file to printer2
230 Guest login ok, access restrictions apply.
ftp>put c:\example printer1
200 PORT command successful.
150 Opening BINARY mode data connection for 'printer1'.
226 Transfer complete.
ftp: 110762 bytes sent in 2.29Seconds 48.28Kbytes/sec.
ftp>
```

- 8. The file will be sent to the Print Server. When the transfer is complete, another prompt will appear. If finished, type “quit” and press “Enter” to end the FTP session. Then, close the “Command Prompt” window.

Note: FTP Printing by default is enabled in the Print Server. It can be disabled using the Print Server’s Web-Based Setup Interface.

Troubleshooting

Cannot find Print Server

If the Wizard cannot find your Print Server even though it appears to be functioning properly, the problem may be that the Ethernet cable connected to the Print Server and Router may be loose. Check to see that the Ethernet cable is connected properly and try repowering the Print Server and your Router.

Note: When connecting your Print Server to your network, or when you disconnect and reconnect or replace the router to which your Print Server is connected, be sure to restore factory defaults on the Print Server by holding in the reset button for 10 seconds while repowering the Print Server. This will restore the IP address to dynamic to establish a new IP address to be used with the new network or router.

- It could be that the computer is set to print to the wrong printer. Verify that the printer connected to the Print Server is set as the “default printer”.
- When troubleshooting a printing problem, try to determine whether any of the computers on the network can access the Print Server. If some computers can print, and some cannot, then the problem is most likely not the Print Server or the printer, but the printer driver settings on the specific computer. In this case, run the Print Server Setup Wizard again to reconfigure the computer. If this still doesn't correct the problem, delete the printer driver from your computer. Reinstall it using the manufacturer's CD that came with your printer (it should direct you to check the manufacturer's website for updated drivers); then run the Setup Wizard again. In some cases, drivers from a printer manufacturer might support Print Servers in Windows XP or 2000, but not Windows 98. Check the Belkin website for compatibility issues at <http://web.belkin.com/support/F1UP0301>.
- If none of the computers can access the Print Server, then either:
 1. The Print Server has not been configured correctly (in this case, rerun the Setup Wizard);
 2. Or, the printer you have connected to the Print Server does not support a print-server connection. Check the Belkin website for printer compatibility issues at: <http://web.belkin.com/support/F1UP0301>.

Troubleshooting

If the Print Server has been configured before, and the IP address has already been set to another subnet, the best solution is to restore factory defaults on the Print Server. Do this by holding down the reset button while repowering the Print Server. After a reset, the Print Server will generally receive an IP address in the correct subnet.

“No printer” error screen appears during setup. In most cases, this error occurs when the printer is not powered on, or it is not enabled (or online). After you have checked this, make sure that it is not out of paper or jammed. Some printers “sleep” after periods of inactivity. In any of these cases, restore the printer to functionality, then, if necessary, reboot the Print Server. Some USB printers are not compatible with Print Servers. To check the Belkin website for compatibility information, go to: <http://web.belkin.com/support/F1UP0301>.

1

2

3

4

5

6

7

8

9

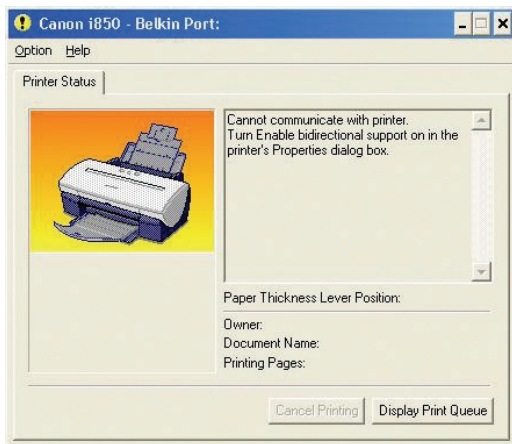
10

section

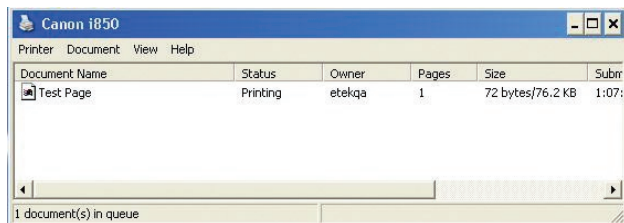
“Cannot communicate with printer” or “printer not found” error message appears in Printer Driver Status Monitor

Again, this may result from:

If those issues are addressed and the problem still exists, Belkin recommends that the user disable the Printer Driver Status Monitor on the computer. The status monitor, a convenient checkpoint for the user, usually requires a direct connection between the computer and the printer. It may not communicate with the printer when connected to a print server on a network.



Instead, use the Windows “Printer Status” window to check printing status.



Installation CD-ROM does not start Setup Utility

If the CD-ROM does not start the Setup Utility automatically, it could be that the computer is running other applications that are interfering with the CD drive.

If the Setup Utility screen does not appear within 15-20 seconds, open up your CD-ROM drive by double-clicking on the “My Computer” icon. Next, double-click on the CD-ROM drive that the Installation CD has been placed in to start the installation. Then, double-click on the icon named “Setup.exe”.



Troubleshooting

Technical Support

You can find technical support information at www.belkin.com or www.belkin.com/networking. If you want to contact technical support by phone, please call:

US: 877-736-5771

Europe: 00 800 223 55 460

Australia: 1800 666 040

FCC Statement

DECLARATION OF CONFORMITY WITH FCC RULES FOR ELECTROMAGNETIC COMPATIBILITY

We, Belkin Corporation, of 501 West Walnut Street,
Compton, CA 90220, declare under our sole
responsibility that the product,

F1UP0301

to which this declaration relates,
complies with Part 15 of the FCC Rules. Operation is
subject to the following two conditions: (1) this device
may not cause harmful interference, and (2) this device
must accept any interference received, including
interference that may cause undesired operation.

Caution: Exposure to Radio Frequency Radiation.

The radiated output power of this device is far below the FCC radio frequency exposure limits. Nevertheless, the device shall be used in such manner that the potential for human contact normal operation is minimized.

When connecting an external antenna to the device, the antenna shall be placed in such a manner to minimize the potential for human contact during normal operation. In order to avoid the possibility of exceeding the FCC radio frequency exposure limits, human proximity to the antenna shall not be less than 20cm (8 inches) during normal operation.

Federal Communications Commission Notice

This equipment has been tested and found to comply with the limits for a Class B digital device, pursuant to Part 15 of the FCC Rules. These limits are designed to provide reasonable protection against harmful interference in a residential installation.

This equipment generates, uses, and can radiate radio frequency energy. If not installed and used in accordance with the instructions, it may cause harmful interference to radio or television reception, which can be determined by turning the equipment off and on, the user is encouraged to try and correct the interference by one or more of the following measures:

- Reorient or relocate the receiving antenna.
- Increase the distance between the equipment and the receiver.
- Connect the equipment to an outlet on a circuit different from that to which the receiver is connected.
- Consult the dealer or an experienced radio/TV technician for help.

1

2

3

4

5

6

7

8

9

10

section

Information

Modifications

The FCC requires the user to be notified that any changes or modifications to this device that are not expressly approved by Belkin Corporation may void the users authority to operate the equipment.

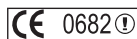
Canada-Industry Canada (IC)

The wireless radio of this device complies with RSS 139 & RSS 210 Industry Canada. This Class B digital complies with Canadian ICES-003.

Cet appareil numérique de la classe B conforme à la norme NMB-003 du Canada.

Europe-European Union Notice

Radio products with the CE 0682 or CE alert marking comply with the R&TTE Directive (1995/5/EC) issued by the Commission of the European Community.



Compliance with this directive implies conformity to the following European Norms (in brackets are the equivalent international standards).

- EN 60950 (IEC60950) – Product Safety
- EN 300 328 Technical requirement for radio equipment
- ETS 300 826 General EMC requirements for radio equipment.



To determine the type of transmitter, check the identification label on your Belkin product.

Products with the CE marking comply with the EMC Directive (89/336/EEC) and the Low Voltage Directive (72/23/EEC) issued by the Commission of the European Community. Compliance with these directives implies conformity to the following European Norms (in brackets are the equivalent international standards).

- EN 55022 (CISPR 22) – Electromagnetic Interference
- EN 55024 (IEC61000-4-2,3,4,5,6,8,11) – Electromagnetic Immunity
- EN 61000-3-2 (IEC610000-3-2) – Power Line Harmonics
- EN 61000-3-3 (IEC610000) – Power Line Flicker
- EN 60950 (IEC60950) – Product Safety



Products that contain the radio transmitter are labeled with CE 0682 or CE alert marking and may also carry the CE logo.

Belkin Corporation Limited Lifetime Product Warranty

Belkin Corporation warrants this product against defects in materials and workmanship for its lifetime. If a defect is discovered, Belkin will, at its option, repair or replace the product at no charge provided it is returned during the warranty period, with transportation charges prepaid, to the authorized Belkin dealer from whom you purchased the product. Proof of purchase may be required.

Information

This warranty does not apply if the product has been damaged by accident, abuse, misuse, or misapplication; if the product has been modified without the written permission of Belkin; or if any Belkin serial number has been removed or defaced.

THE WARRANTY AND REMEDIES SET FORTH ABOVE ARE EXCLUSIVE IN LIEU OF ALL OTHERS, WHETHER ORAL OR WRITTEN, EXPRESSED OR IMPLIED. BELKIN SPECIFICALLY DISCLAIMS ANY AND ALL IMPLIED WARRANTIES, INCLUDING, WITHOUT LIMITATION, WARRANTIES OF MERCHANTABILITY AND FITNESS FOR A PARTICULAR PURPOSE.

No Belkin dealer, agent, or employee is authorized to make any modification, extension, or addition to this warranty.

BELKIN IS NOT RESPONSIBLE FOR SPECIAL, INCIDENTAL, OR CONSEQUENTIAL DAMAGES RESULTING FROM ANY BREACH OF WARRANTY, OR UNDER ANY OTHER LEGAL THEORY, INCLUDING BUT NOT LIMITED TO, LOST PROFITS, DOWNTIME, GOODWILL, DAMAGE TO OR REPROGRAMMING OR REPRODUCING ANY PROGRAM OR DATA STORED IN, OR USED WITH, BELKIN PRODUCTS.

Some states do not allow the exclusion or limitation of incidental or consequential damages or exclusions of implied warranties, so the above limitations of exclusions may not apply to you. This warranty gives you specific legal rights, and you may also have other rights that vary from state to state.

1

2

3

4

5

6

7

8

9

10

section

BELKIN®

2-Port USB Print Server



belkin.com

Belkin Tech Support
US: 877.736.5771
310.898.1100 ext. 2263
Europe: 00 800 223 55 460
Australia: 1800 666 040

Belkin Corporation
501 West Walnut Street
Compton • CA • 90220 • USA
Tel: 310.898.1100
Fax: 310.898.1111

Belkin, Ltd.
Express Business Park • Shipton Way
Rushden • NN10 6GL • United Kingdom
Tel: +44 (0) 1933 35 2000
Fax: +44 (0) 1933 31 2000

Belkin, Ltd.
7 Bowen Crescent • West Gosford
NSW 2250 • Australia
Tel: +61 (0) 2 4372 8600
Fax: +61 (0) 2 4372 8603

Belkin, B.V.
Starparc Building • Boeing Avenue 333
1119 PH Schiphol-Rijk • The Netherlands
Tel: +31 (0) 20 654 7300
Fax: +31 (0) 20 654 7349

© 2004 Belkin Corporation. All rights reserved. All trade names are registered trademarks of respective manufacturers listed.

Free Manuals Download Website

<http://myh66.com>

<http://usermanuals.us>

<http://www.somanuals.com>

<http://www.4manuals.cc>

<http://www.manual-lib.com>

<http://www.404manual.com>

<http://www.luxmanual.com>

<http://aubethermostatmanual.com>

Golf course search by state

<http://golfingnear.com>

Email search by domain

<http://emailbydomain.com>

Auto manuals search

<http://auto.somanuals.com>

TV manuals search

<http://tv.somanuals.com>