



# steamMOP™

## USER'S GUIDE

### 1867 SERIES

3 **Safety Instructions**

4 **Product view**

5 **Assembly Instructions**

6-8 **Features / Operations**

8-9 **Routine Maintenance**

10 **Troubleshooting**

11 **Consumer Services**

11 **Replacement Parts**

12 **Warranty**





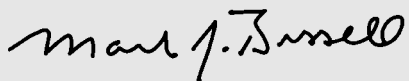
*Thanks for buying a BISSELL Steam Mop*

We're glad you purchased a BISSELL Steam Mop. Everything we know about floor care went into the design and construction of this complete, high-tech home cleaning system.

Your Steam Mop is well made, and we back it with a limited one-year warranty. We also stand behind it with a knowledgeable, dedicated Consumer Services Department, so, should you ever have a problem, you'll receive fast, considerate assistance.

My great-grandfather invented the floor sweeper in 1876. Today, BISSELL is a global leader in the design, manufacture, and service of high quality homecare products like your Steam Mop.

Thanks again, from all of us at BISSELL.



Mark J. Bissell  
President and Chief Executive Officer

# IMPORTANT SAFETY INSTRUCTIONS

**When using an electrical appliance, basic precautions should be observed, including the following:**

Read all instructions before using your STEAM MOP™.

## **⚠️ WARNING - To reduce the risk of fire, electric shock, or injury:**

- Do not direct steam at people, animals, or at electrical outlets.
- Do not expose to rain.
- Store indoors.
- Unplug from outlet when not in use and before conducting maintenance or troubleshooting.
- Do not leave steam cleaner unattended.
- Do not leave the steam cleaner connected to an electrical outlet when not in use.
- Do not service steam cleaner when it is plugged in.
- Do not use with damaged cord or plug.
- Do not use steam cleaner if it has been dropped, damaged, left outdoors or dropped into water, return it to a service center.
- Do not handle steam cleaner with wet hands.
- Do not pull or carry by cord, use cord as a handle, close door on cord, pull cord around sharp corners or edges, or expose cord to heated surfaces.
- Do not unplug by pulling on cord.
- Do not use appliance in an enclosed space filled with vapor given off by oil-base paint, paint thinner, some moth proofing substances, flammable dust, or other explosive or toxic vapors.
- Do not allow to be used as a toy.
- Do not use on leather, wax polished furniture or floors, synthetic fabrics, velvet or other delicate, steam-sensitive materials.
- Do not immerse.
- Do not use for any purpose other than described in this User's Guide.
- Use only manufacturer's recommended attachments - use of attachments not provided or sold by BISSELL may cause fire, electric shock or injury.

- Never put descaling, aromatic, alcoholic or detergent products into the steam cleaner, as this may damage it or make it unsafe for use.
- Unplug by grasping the plug, not the cord.
- Close attention is necessary when used by or near children.

**WARNING:** The Power Cord on this product contains lead, a chemical known to the State of California to cause birth defects or other reproductive harm.

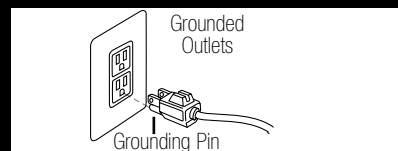
**WASH HANDS AFTER HANDLING.**

## **SAVE THESE INSTRUCTIONS.**

THIS MODEL IS FOR HOUSEHOLD USE ONLY. Commercial use of this unit voids the manufacturer's warranty.

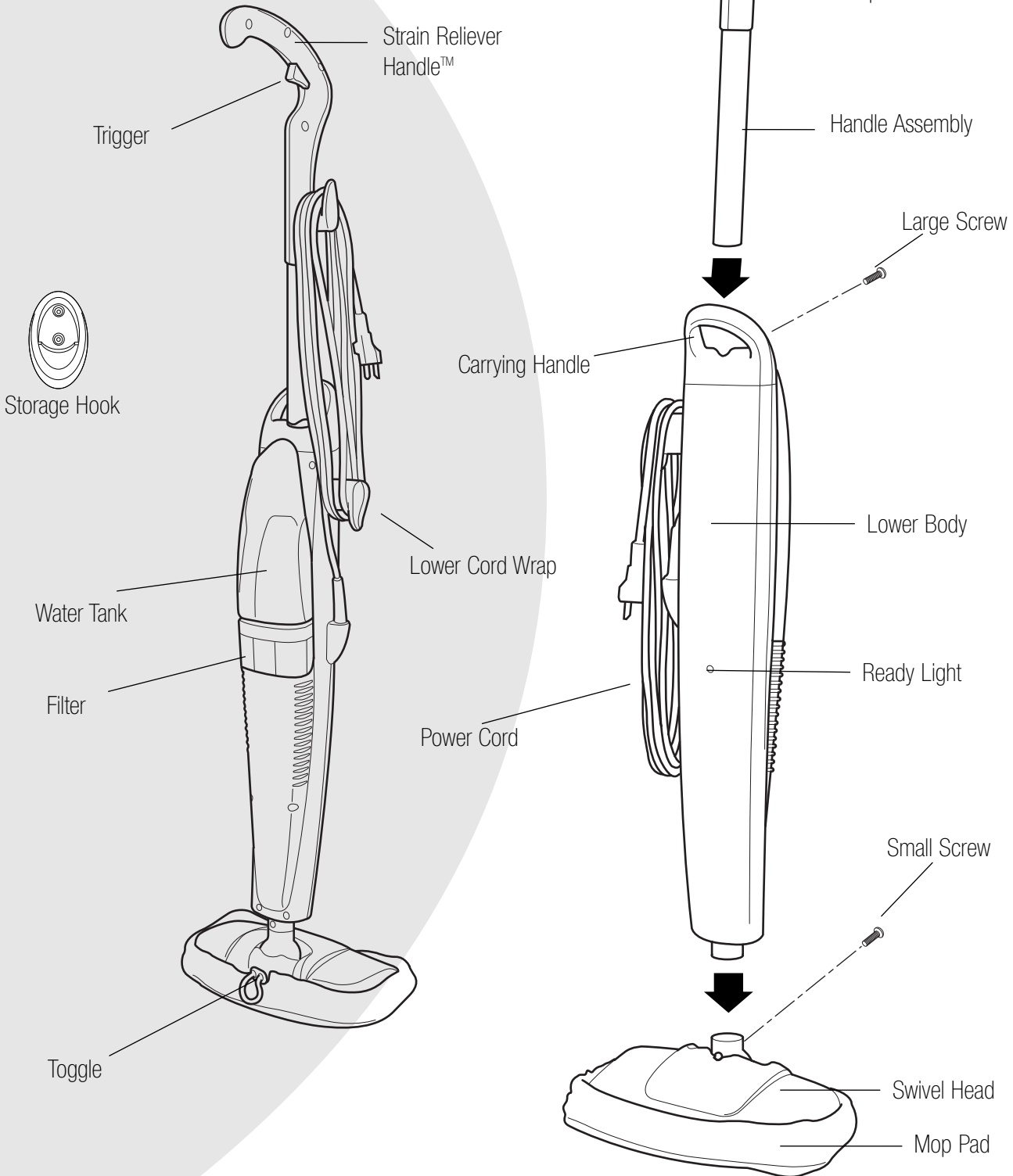
## **GROUNDING INSTRUCTIONS**

This appliance must be connected to a grounded wiring system. If it should malfunction or break down, grounding provides a safe path of least resistance for electrical current, reducing the risk of electrical shock. The cord for this appliance has an equipment-grounding conductor and a grounding plug. It must only be plugged into an outlet that is properly installed and grounded in accordance with all local codes and ordinances.



**⚠️ WARNING:** Improper connection of the equipment-grounding conductor can result in a risk of electrical shock. Check with a qualified electrician or service person if you aren't sure if the outlet is properly grounded. **DO NOT MODIFY THE PLUG.** If it will not fit the outlet, have a proper outlet installed by a qualified electrician. This appliance is designed for use on a nominal 120-volt circuit, and has a grounding attachment plug that looks like the plug in the drawing above. Make certain that the appliance is connected to an outlet having the same configuration as the plug. No plug adapter should be used with this appliance.


# Product View



## How to Use This Guide

This User's Guide has been designed to help you get the utmost satisfaction from your BISSELL Steam Mop bare floor steam cleaner. You'll find assembly and operating instructions, safety precautions, maintenance and troubleshooting instructions.



Pay particular attention to the parts diagram, assembly instructions, and part names. Following this User's Guide will greatly enhance your ability to get the best performance from your BISSELL Steam Mop for many years.

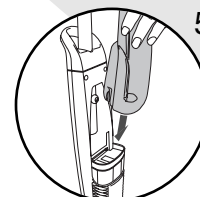
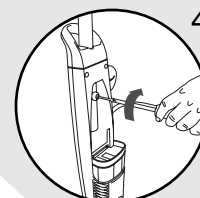
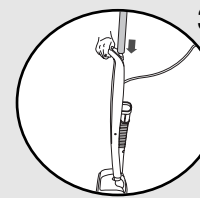
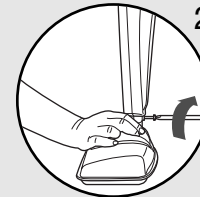
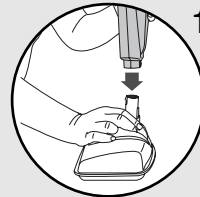
Your Steam Mop assembles quickly and easily. The only tool you will need to assemble your cleaner is a Phillips Head  Screwdriver.

Your Steam Mop is packaged with the following items:

Handle Assembly	1 Large Phillips Head Screw
Lower Body with Filter	1 Small Phillips Head Screw
Swivel Head	2 Mop Pads
Water Tank	Storage Hook with 2 Screws

## How To Assemble Your Steam Mop

- 1.** Attach Swivel Head.
- 2.** Secure Swivel Head with small Phillips Head  Screw. Tighten until secure.
- 3.** Slide Handle Assembly down into Lower Body until it will go no further.
- 4.** Secure the handle by placing the Large Phillips Head  Screw through the screw opening in the Lower Body and into the rear of the Handle Assembly. Tighten with screwdriver until secure.
- 5.** Slide Water Tank onto Lower Body by lining up vertical glides and gently sliding tank into place.



## Steam Mop Product Features

- 1. Water Tank.** The Water Tank is located on the back of the Steam Mop. It can be refilled with water any time during use. Distilled or demineralized water may be used in place of tap water.
- 2. Water Filter.** This filter removes minerals and other impurities from tap water, preventing water deposits from damaging your Steam Mop. It should be replaced when the bright green grains turn blue. To maximize performance of the filter, distilled water may be used.
- 3. Ready Light.** The Ready Light will glow when tap water has been converted to steam and the Steam Mop is ready to use.
- 4. Trigger.** Press to release steam.
- 5. Swivel Head.** Allows you to clean in tight spaces and under cabinets.
- 6. Mop Pad.** The absorbent terry cloth Mop Pad picks up the dirt loosened by the steam. The Mop Pad is reusable and machine washable.
- 7. Storage Hook.** Mount on a wall for convenient storage in a closet or utility room.

Mounting instructions:

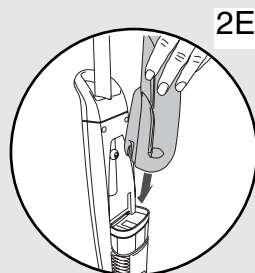
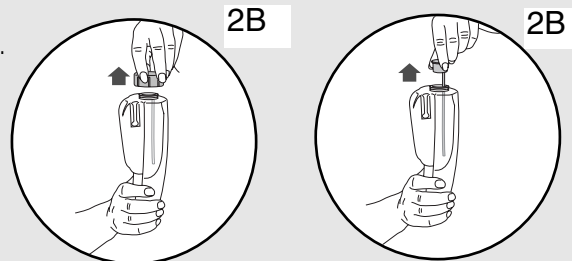
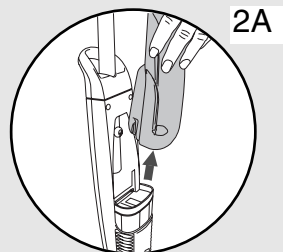
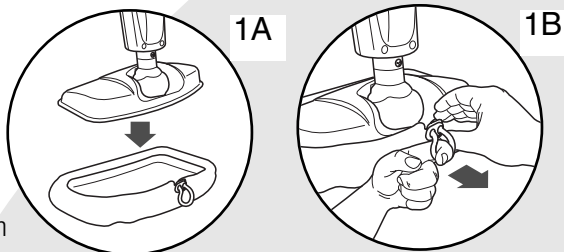
- A.** Choose a mounting location that is over a stud.
- B.** Hold the Storage Hook against the wall with the screw holes at the top of the hook. With a pencil, mark the position of both screw holes.
- C.** Drill 1/8" diameter holes in the center of your pencil marks.
- D.** Place Storage Hook over drilled holes.
- E.** Secure Storage Hook by screwing in place with the provided screws.

### *Tip:*

Do Not attempt to use your Steam Mop without water in the tank.

## Getting Ready

- 1.** Attach Mop Pad
  - A.** Set Swivel Head in Mop Pad.
  - B.** Tighten Mop Pad by pulling on cord while pressing on Toggle.
  
- 2.** Fill the Water Tank
  - A.** Remove Tank by lifting straight up and away from unit.
  - B.** Unscrew cap at bottom of Water Tank, remove the insert assembly.
  - C.** Fill Water Tank with cool tap water.
  - D.** Replace the insert assembly, replace and tighten cap.
  - E.** Replace Water Tank by lining up vertical guides and gently sliding tank into place.
  
- 3.** Twist the Quick Release Cord Wrap clockwise to unwrap the Power Cord completely and plug into a 120-Volt grounded outlet as described on the Important Safety Instructions, page 3.
  
- 4.** The Ready Light will illuminate when the Steam Mop is ready for cleaning.



**⚠ WARNING:**  
Never put descaling, aromatic, alcoholic, or detergent products into the steam cleaner, as this may damage it or make it unsafe for use.

## Cleaning Bare Floors

Your Steam Mop is designed to clean bare flooring such as ceramic tile, vinyl, laminate, marble, stone and sealed hard wood floors. Use of your Steam Mop on waxed or some unwaxed floors may result in a diminished glossiness. The Steam Mop is not for use on unsealed wood floors. For best results test in an inconspicuous area or check the care instructions from your flooring manufacturer.

1. Sweep or vacuum floor prior to using.
2. Slowly pass over surface to be cleaned while pressing trigger to emit steam.
3. To sanitize an area of your floor, leave the Steam Mop over area for a minimum 15 seconds, but no longer than 20 seconds. For larger areas, overlap Swivel Head placement.
4. When the Steam Mop stops emitting steam, simply remove the Water Tank, refill, and continue cleaning.

## Routine Maintenance

### When You're Done

1. Unplug Power Cord from outlet.
2. Carefully remove Mop Pad from Swivel Head, as Mop Pad and Lower Assembly will be hot.
3. Any water remaining in the Water Tank should be emptied prior to machine storage.
4. Mop Pad can be machine washed in hot water and tumbled dry.
5. Wrap Power Cord around Quick Release Cord Wrap on side of Steam Mop.
6. Wipe all surfaces of Steam Mop with a soft cloth. Store upright in a protected, dry area or hang by storage hook.

### Tip:

During first use, it may take several seconds for the Steam Mop to begin steaming. The water needs to flow through the filter to the heater. This delay will only occur during initial use or when using a new filter.

 **CAUTION:**  
Upright storage of the Steam Mop with a wet Mop Pad may result in the formation of white marks on your floor. To remove the white marks, clean area with vinegar.



## Replacing The Water Filter

If you fill your steam cleaner with normal tap water, it is essential to check the Water Filter and replace it when it is no longer effective. Change the filter when the bright green grains turn blue. If the filter is not changed at the appropriate time, calcium deposits will accumulate on the heating element, causing damage or reduced performance.

Using distilled or demineralized water will maximize the performance of your filter.

## Replacement Filter

Use only BISSELL Water Filters in your BISSELL Steam Mop steam cleaner. To locate a retailer near you, or to place an order, call

### **BISSELL Consumer Services**

**1-800-237-7691**

Monday - Friday 8 am. — 10 pm. ET

Saturday 9 am. — 8 pm. ET

Or visit our Website @ <http://www.bissell.com>



## Reduced Steam Or No Steam.

### Possible Causes

- 1 Water Tank empty
- 2 Depleted Water Filter
- 3 Blocked Steam Nozzle

### Remedies

- 1 Fill tank
- 2 Replace Filter
- 3 Remove Swivel Head - pour vinegar through head. Clear Nozzle by inserting a paper clip into the brass spray tip.

If suggested solution for this or any function of your Steam Mop does not correct the problem, call BISSELL Consumer Services.

## BISSELL Consumer Services

For information about repairs or replacement parts, or questions about your warranty, call:

### **BISSELL Consumer Services**

**1-800-237-7691**

Monday - Friday 8 am. — 10 pm. ET

Saturday 9 am. — 8 pm. ET

Or write:

BISSELL HOMECARE, INC

PO Box 3606

Grand Rapids MI 49501

ATTN: Consumer Services

Or visit the BISSELL website - [www.bissell.com](http://www.bissell.com)

When contacting BISSELL, have model number of unit available.

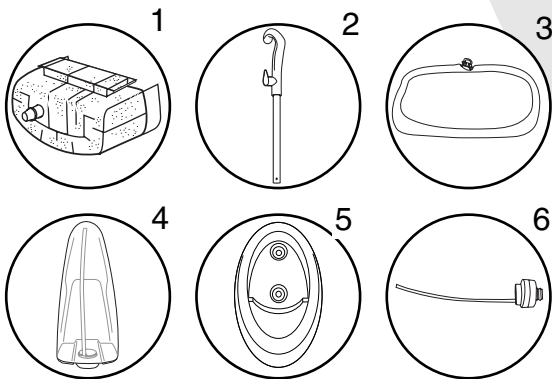
Please record your Model Number: \_\_\_\_\_

Please record your Purchase Date: \_\_\_\_\_

**NOTE: Please keep your original sales receipt. It provides proof of date of purchase in the event of a warranty claim. See "About Your Warranty" on page 12 for details.**

## Replacement Parts

Item	Part No.	Part Name
1	018-5600	Water Filter
2	603-2047	Handle / with screw
3	603-2043	Mop Pads - 2 pack
4	603-2045	Water Tank
5	603-2050	Storage Hook
6	603-2046	Cap and Insert Assembly



## About Your Warranty

This warranty gives you specific legal rights, and you may also have other rights which may vary from state to state. If you need additional instruction regarding this warranty or have questions regarding what it may cover, please contact BISSELL Consumer Services by E-mail, telephone, or regular mail as described below.

### Limited **One** Year Warranty

Subject to the \*EXCEPTIONS AND EXCLUSIONS identified below, upon receipt of the product BISSELL Homecare, Inc. will repair or replace (with new or remanufactured components or products), at BISSELL's option, free of charge from the date of purchase by the original purchaser, for one year any defective or malfunctioning part.

See information below on "If your BISSELL product should require service".

This warranty applies to product used for personal, and not commercial or rental service. This warranty does not apply to fans or routine maintenance components such as filters, belts, or brushes. Damage or malfunction caused by negligence, abuse, neglect, unauthorized repair, or any other use not in accordance with the User's Guide is not covered.

#### **If your BISSELL product should require service:**

Contact BISSELL Consumer Services to locate a BISSELL Authorized Service Center in your area.

If you need information about repairs or replacement parts, or if you have questions about your warranty, contact BISSELL Consumer Services.

#### **Website or E-mail:**

[www.bissell.com](http://www.bissell.com)

Use the "Customer Services" tab.

#### **Or Call:**

BISSELL Consumer Services

1-800-237-7691

Monday - Friday 8 am. - 10 pm. ET

Saturday 9 am. - 8 pm. ET

#### **Or write:**

BISSELL Homecare Inc.

PO Box 3606

Grand Rapids MI 49501

ATTN: Consumer Services

BISSELL HOMECARE, INC. IS NOT LIABLE FOR INCIDENTAL OR CONSEQUENTIAL DAMAGES OF ANY NATURE ASSOCIATED WITH THE USE OF THIS PRODUCT. BISSELL'S LIABILITY WILL NOT EXCEED THE PURCHASE PRICE OF THE PRODUCT.

Some states do not allow the exclusion or limitation of incidental or consequential damages, so the above limitation or exclusion may not apply to you.

#### \*EXCEPTIONS AND EXCLUSIONS FROM THE TERMS OF THE **LIMITED** WARRANTY

THIS WARRANTY IS EXCLUSIVE AND IN LIEU OF ANY OTHER WARRANTIES EITHER ORAL OR WRITTEN. ANY IMPLIED WARRANTIES WHICH MAY ARISE BY OPERATION OF LAW, INCLUDING THE IMPLIED WARRANTIES OF MERCHANTABILITY AND FITNESS FOR A PARTICULAR PURPOSE, ARE LIMITED TO THE TWO YEAR DURATION FROM THE DATE OF PURCHASE AS DESCRIBED ABOVE.

Some states do not allow limitations on how long an implied warranty lasts, so the above limitation may not apply to you.



©2003 BISSELL HOMECARE, Inc.  
Grand Rapids, Michigan  
All rights reserved. Printed in China  
Part Number 603-2300  
Rev 7/03

Visit our website at:  
[www.bissell.com](http://www.bissell.com)

## Free Manuals Download Website

<http://myh66.com>

<http://usermanuals.us>

<http://www.somanuals.com>

<http://www.4manuals.cc>

<http://www.manual-lib.com>

<http://www.404manual.com>

<http://www.luxmanual.com>

<http://aubethermostatmanual.com>

Golf course search by state

<http://golfingnear.com>

Email search by domain

<http://emailbydomain.com>

Auto manuals search

<http://auto.somanuals.com>

TV manuals search

<http://tv.somanuals.com>