



VIP X1600 XFM4

VIP-X1600-XFM4A/VIP-X1600-XFM4B



BOSCH

en Quick Installation Guide

1 General Information

These instructions "Quick Installation Guide" refer to encoder modules VIP X1600 XFM4A and VIP X1600 XFM4B. The encoder modules are intended for installation in the following devices:

- VIP X1600 XF base
- VIP X1600 B base

The VIP X1600 base is not supported.

CAUTION!



You should always make yourself familiar with the required safety measures in the relevant chapters of the Installation and Operating Manuals for the VIP X1600 XFM4 encoder module and the base being used (see product CD in the scope of delivery for the base being used). The manuals on the product CD contain important information on the installation and operation of the devices.

These instructions "Quick Installation Guide" only show the basic installation of a VIP X1600 XFM4A or VIP X1600 XFM4B encoder module, they are no substitute for the complete user's manual.

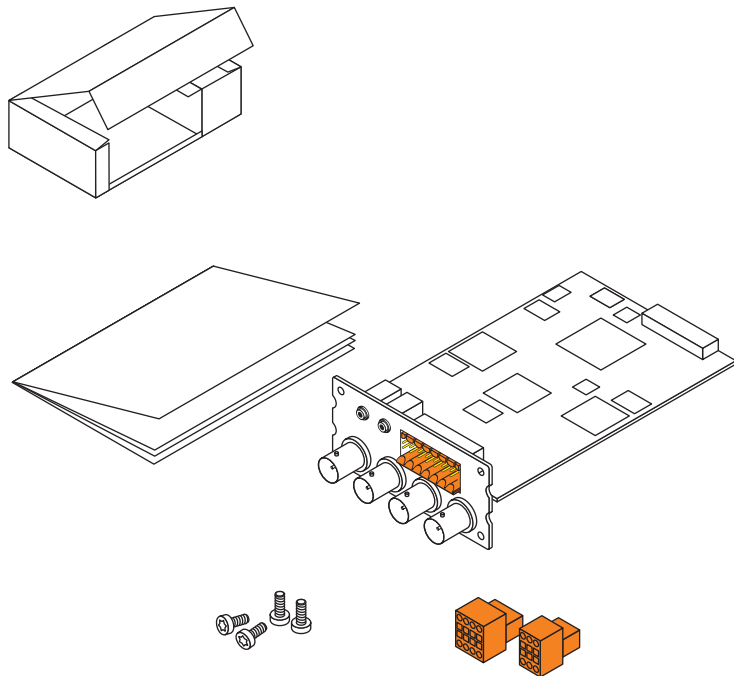
You can find further detailed information in the extensive online help for the device in question.

Additional language versions of these instructions "Quick Installation Guide", the Installation and Operating Manuals for the VIP X1600 XFM4 encoder module and the base being used, as well as the 4.0 firmware are available on www.boschsecurity.com.

2 **Scope of Delivery**

- VIP X1600 XFM4A or VIP X1600 XFM4B encoder module
- Two terminal blocks
- Four screws for installation in the base
- Quick Installation Guide

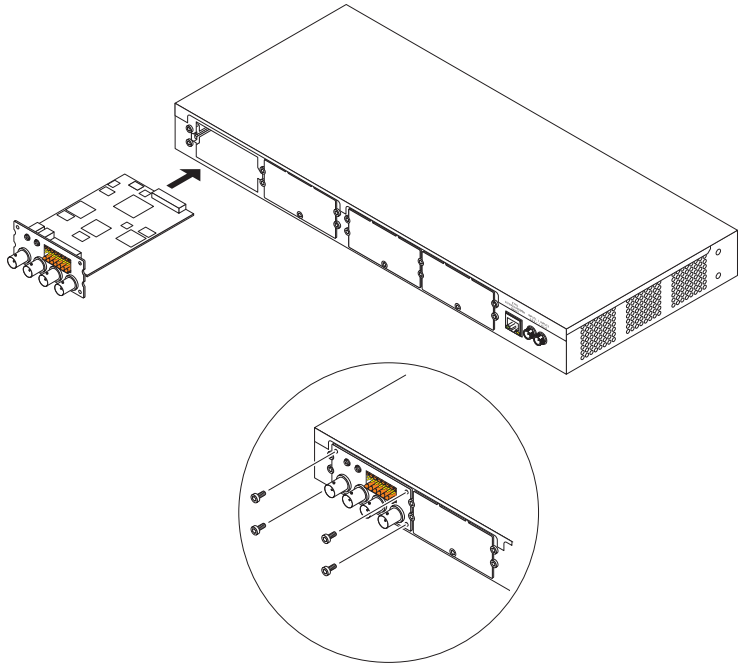
3 Unpacking



- Please check the delivery for completeness and integrity.
- Have your device checked by Bosch Security Systems if you detect any damage!

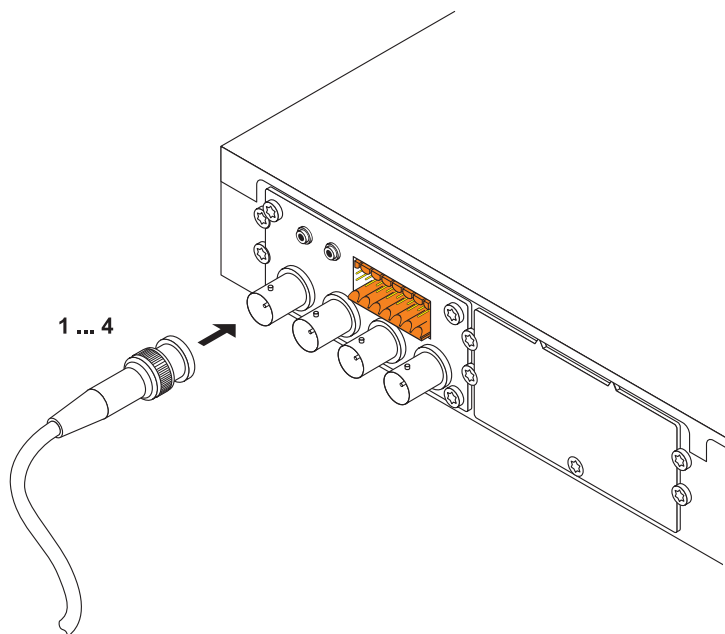
4 Installing and Connecting

4.1 Installing Modules



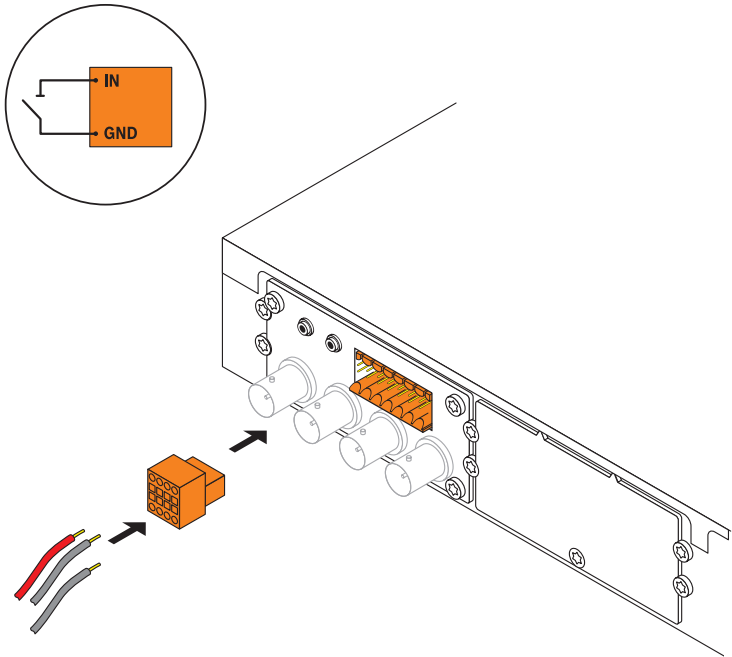
- Insert the module into the guide rails of the first slot and carefully push as far as it will go. If the first slot is already equipped you can equip one of the other unused slots.
- First, remove the respective cover plate by unscrewing the screw and bending the cover plate upwards.
- Insert the four screws provided in the bores on the module and tighten.
- After a module has been removed, you must reseal the empty slot with a cover to ensure correct air circulation.

4.2 Connecting Cameras



- Connect one camera to each, the **Video In 1** socket to the **Video In 4** socket.

4.3 Alarm and Switch Connections



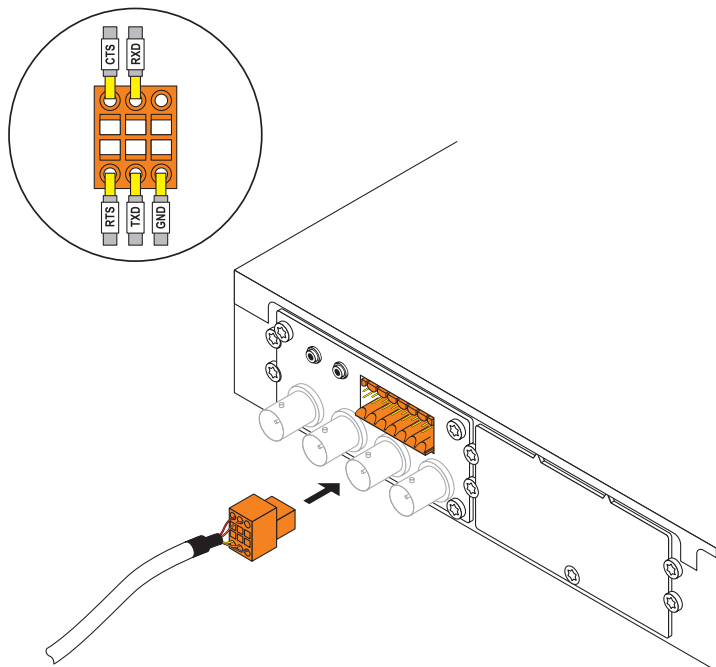
- Connect the alarm lines to terminals **IN1** to **IN4** and **GND** on the 8-pin terminal block.
- Connect the relay lines to the two **R1** terminals on the 8-pin terminal block.
- Secure the terminal block onto the left-hand part of the male multipoint connector.



CAUTION!

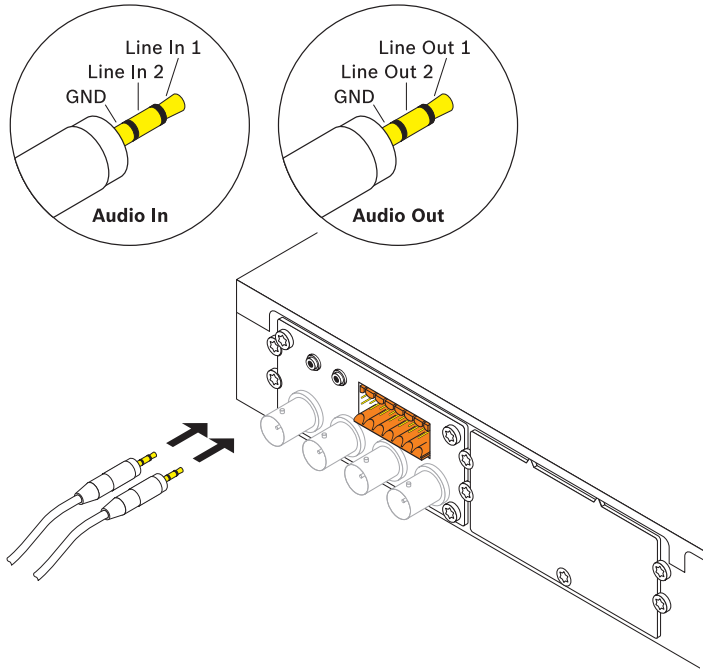
A maximum load of 30 V and 500 mA may be applied to the relay contact.

4.4 Serial Interface



- Connect the serial-connection lines to the corresponding terminals on the 6-pin terminal block as required.
- Secure the terminal block onto the right-hand part of the male multipoint connector.

4.5 Audio Connections

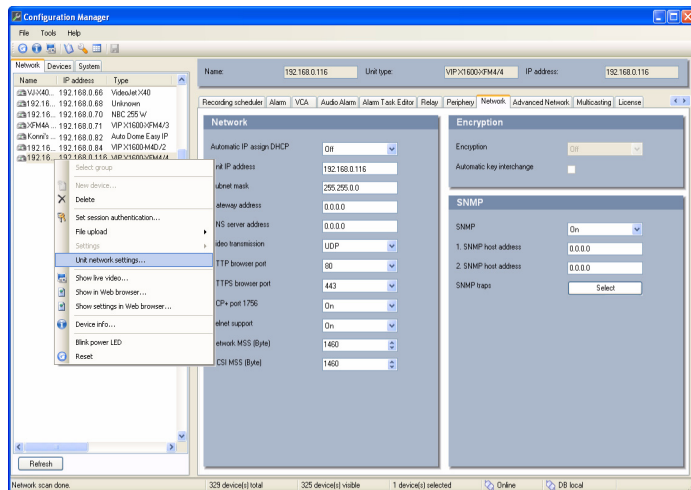


- Use the **Audio In** and **Audio Out** sockets for the audio line connections.

Line In	Input voltage $5.5 V_{p-p}$ max., impedance $9 k\Omega$ typ.
Line Out	Output voltage $3 V_{p-p}$ at $10 k\Omega$ / $1.7 V_{p-p}$ at 16Ω typ.

5 Configuration

5.1 Assigning an IP Address



- If you have not already done so, install the **Configuration Manager** program from the product CD. The product CD is included in the scope of delivery for the base.
- Start **Configuration Manager** when the installation is completed. The network is scanned for compatible devices automatically.
- If the module is displayed in the list, right-click the entry and then click **Unit network settings...** in the popup menu.
- Enter the desired IP address (e.g. **192.168.0.116**) in the **Unit IP address** field and click **OK**. The module is rebooted and the IP address is valid.

Note:

The module must be assigned a valid IP address and a matching subnet mask to operate on your network.

5.2 Testing the Configuration



- Launch the Web browser and enter the IP address of the module as the URL (e.g. **http://192.168.0.116**) to check that it is properly connected to the network.
- Use the links at the top of the pages to navigate.



NOTICE!

Set the graphics card of the computer to 16-bit or 32-bit color depth. Otherwise the computer cannot display the video images.

Bosch Security Systems

Robert-Koch-Straße 100

D-85521 Ottobrunn

Germany

Telefon 089 6290-0

Fax 089 6290-1020

www.boschsecurity.com

© Bosch Security Systems, 2009

Free Manuals Download Website

<http://myh66.com>

<http://usermanuals.us>

<http://www.somanuals.com>

<http://www.4manuals.cc>

<http://www.manual-lib.com>

<http://www.404manual.com>

<http://www.luxmanual.com>

<http://aubethermostatmanual.com>

Golf course search by state

<http://golfingnear.com>

Email search by domain

<http://emailbydomain.com>

Auto manuals search

<http://auto.somanuals.com>

TV manuals search

<http://tv.somanuals.com>