

# Bose® around-ear headphones

Owner's Guide

Brugervejledning

Bedienungsanleitung

Guía de usuario

Notice d'utilisation

Manuale di istruzioni

Gebruiksaanwijzing

Bruksanvisningen

คู่มือผู้ใช้

사용자 안내서

用戶指南

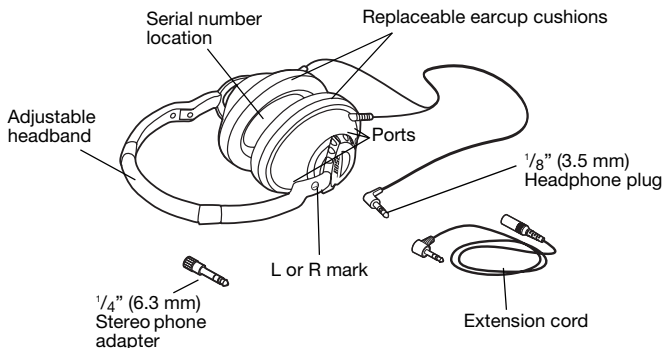
دليل المالك



## Introduction

Thank you for purchasing the Bose around-ear headphones. Enjoy quality sound performance and a remarkably comfortable fit with Bose® around-ear headphones. Bose technologies deliver acclaimed clarity and range you might not expect from a pair of headphones this lightweight and comfortable. Bose around-ear headphones offer exceptional sound for personal listening just about anywhere.

## Components



## Wearing the headphones

Put on the headphones using the markings which identify the left (L) and right (R) earcups. Adjust the headband so it rests gently on top of your head and the earcup cushions fit comfortably around your ears.

## Connecting to an audio device

The Bose around-ear headphones connect with almost any audio device – CD/DVD/MP3 players, personal computers and home stereo equipment.

Insert the headphone plug securely into the audio output (not the line output) jack of the selected audio device. With some home stereo equipment, the 1/4 inch (6.3 mm) adapter may be needed.

## Using the “enhancement” features of audio devices

Many portable audio devices include features or settings which electronically alter the audio signal sent to the headphones. These may include “bass boost” or other EQ settings. Other features may serve to limit volume out such as “sound check” or “volume limit.” Finally, other features add spatialization effects such as “Surround”, “SMS”, “WOW”, or “3D.”

The Bose around-ear headphones were designed to deliver high quality, balanced sound and deep, low notes without the need for any artificial enhancement. Therefore, when using the headphones we recommend that you first **turn off** all the enhancement features before making any personal adjustments to the audio settings.

## Cleaning the headphones

The Bose around-ear headphones do not require scheduled cleaning. Should cleaning be necessary, simply wipe the outside surfaces with a damp cloth. Be sure the earcup ports are kept clear, and that no moisture is allowed to get inside the earcup.

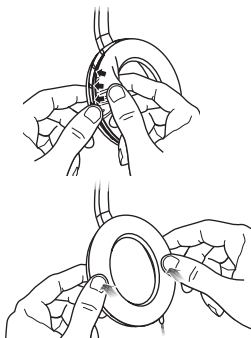
## Replacement parts and accessories

Accessories or replacement parts can be ordered through Bose Customer Service. See the contact information for your area included in this guide.

Part	Product Code
Drawstring carry bag:	029174
Replacement cushions:	029176
5' Extension cable:	029177
20' Extension cable:	030133

## Reattaching earcup cushions

The earcup cushions are held in place by a mounting flange which snaps under small tabs located around the inside rim of the earcup. If an earcup cushion becomes partially or completely detached, push the mounting flange of the earcup cushion back into the earcup. Using your finger or thumb, press around the edge of the mounting flange, making sure it snaps in place all the way around the earcup.



## Warranty

See the Warranty and Product Registration Card for warranty information.

## Troubleshooting

Problem	What to do
No audio	Make sure that the headphone plug is securely connected to the headphone jack (not the line out jack) of the audio device.
Excessive bass	Turn off any bass boost features on the audio source when using the headphones.
Distorted bass	Make sure that the earcup ports are not blocked in any way. If they are dirty, gently wipe away any debris.

If any problem persists, contact Customer Service. See the phone number for your area included in this guide.

## CAUTIONS

- *Long-term exposure to loud music may cause hearing damage. Please avoid extreme volume when using headphones, especially for extended periods.*
- *Do not use headphones when operating a motor vehicle or anywhere the inability to hear outside sounds may present a danger to you or others.*
- *Sounds that you rely on as reminders or warnings may have an unfamiliar character when using headphones. Be aware of how these sounds may vary in character so you can recognize them as needed.*
- *Do not drop, sit on or allow the headphones to be immersed in water.*



This product conforms to the EMC Directive 89/336/EEC. The complete Declaration of Conformity can be found at [www.Bose.com/compliance](http://www.Bose.com/compliance).

# Bose Corporation

## **Australia**

Phone: 1 800 023 367  
www.bose.com.au

## **Belgique/België**

Phone: 012 390800  
Fax: 012 390840

## **Canada**

Phone: 1-800-465-2673  
Fax: 1-800-862-2673  
www.bose.ca

## **China**

Phone: 86-21-62713000, x162  
Fax: 86-21-62713008

## **Danmark**

Phone: 04343-7777  
Fax: 04343-7818

## **Deutschland**

Phone: +49-5921-724142  
Fax: +49-5921-724251  
www.bose.de

## **France**

Phone: 01-30616363  
Fax: 01-30616382  
www.bosefrance.fr

## **India**

Phone: 1 600 11 2673  
Fax: 91 11 2307 3823  
www.boseindia.com

## **Ireland**

Phone: (042) 9671500  
Fax: (042) 9671501  
www.bose.ie

## **Italia**

Phone: 06 60 292 292  
Fax: 06 60 292 119  
www.bose.it

## **Japan**

Phone: 0120-130-168  
Fax: 03-5489-1069  
www.bose.co.jp

## **Mexico**

Phone: +52 (55) 52 02 35 45  
Fax: +52 (55) 52 02 41 95

## **Nederland**

Phone: 0299-390111  
Fax: 0299-390109  
www.bose.nl

## **New Zealand**

Phone: 0800 501 511

## **Norge**

Phone: 62 82 15 60  
Fax: 62 82 15 69

## **Österreich**

Phone: 01-60404340  
Fax: 01-604043423

## **Schweiz**

Phone: 061-9757733  
Fax: 061-9757744

## **Sverige**

Phone: 031-878850  
Fax: 031-274891

## **United Kingdom**

Phone: 0870 7414500  
Fax: 0870 7414545  
www.bose.co.uk

## **United States**

Phone: 1-888-757-9943  
Fax: 1-877-289-4366  
www.bose.com

## **World Wide Web**

www.bose.com  
www.boseeurope.com



***BOSE***<sup>®</sup>  
***Better sound through research***<sup>®</sup>

©2006 Bose Corporation, The Mountain  
Framingham, MA 01701-9168 USA  
AM299357 Rev 02

## Free Manuals Download Website

<http://myh66.com>

<http://usermanuals.us>

<http://www.somanuals.com>

<http://www.4manuals.cc>

<http://www.manual-lib.com>

<http://www.404manual.com>

<http://www.luxmanual.com>

<http://aubethermostatmanual.com>

Golf course search by state

<http://golfingnear.com>

Email search by domain

<http://emailbydomain.com>

Auto manuals search

<http://auto.somanuals.com>

TV manuals search

<http://tv.somanuals.com>