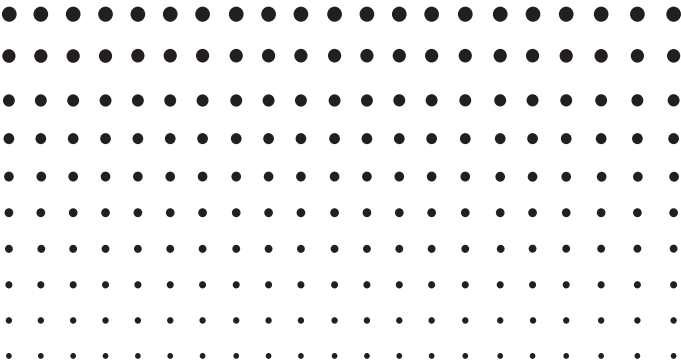


# *fx-ES Emulator*

## *User's Guide*



<http://world.casio.com/edu/>

**CASIO®**

**Note**

Display examples shown in this User's Guide are intended for illustrative purposes only. The actual text and values that appear on display may differ from the examples shown in this User's Guide.

# Introduction

- fx-ES Emulator is software that emulates operation of a scientific calculator. It displays an image of one of the following CASIO scientific calculators on your computer screen.

fx-82ES

fx-83ES

fx-300ES

fx-82AU

- You also can display the LCD of the calculator in a separate window, which can be zoomed as required.
- An image of the LCD can be captured (copied to the Windows clipboard).

## ■ Using This Manual

- This manual covers the operation of the software on your computer. It does not cover the actual operation of your computer. The procedures in this manual assume that you are already familiar with the following standard computer operations.

- Menu operations using the mouse, including: clicking, double-clicking, dragging, etc.
- Text input using the keyboard
- Icon operations, general window operations, etc.

If you are not familiar with these types of operations, refer to the user documentation for your computer.

- The screen shots shown in this manual are all from the English version of Windows® XP.
- Note that the actual appearance of the screen display by this software depends on your computer system setup and on the operating system you are using.

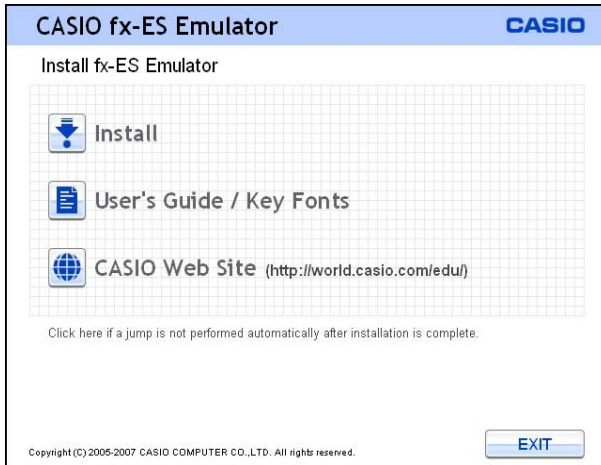
# Contents

<b>1</b>	<b>Installing and Uninstalling fx-ES Emulator .....</b>	<b>E-3</b>
<b>2</b>	<b>Using fx-ES Emulator.....</b>	<b>E-8</b>
	Emulator Operations .....	E-10
	Emulator Shortcut Menus.....	E-11

# 1 Installing and Uninstalling fx-ES Emulator

## To install fx-ES Emulator

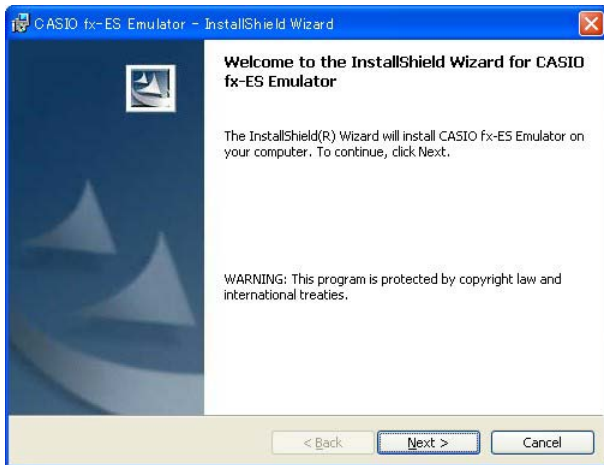
1. Place the CD-ROM into your computer's CD-ROM drive.
  - This will display a screen like the one shown below automatically.



2. Click "Install".
  - This will display a dialog box for selecting the screen language.

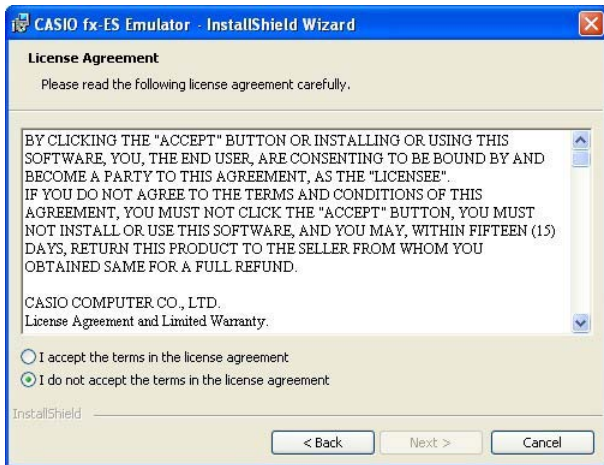


3. Select the language you want and then click [OK].



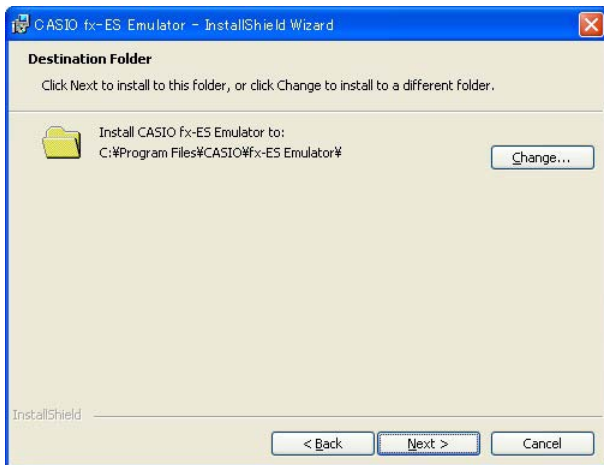
4. Click the [Next] button.

- This will display the end user license agreement (EULA).

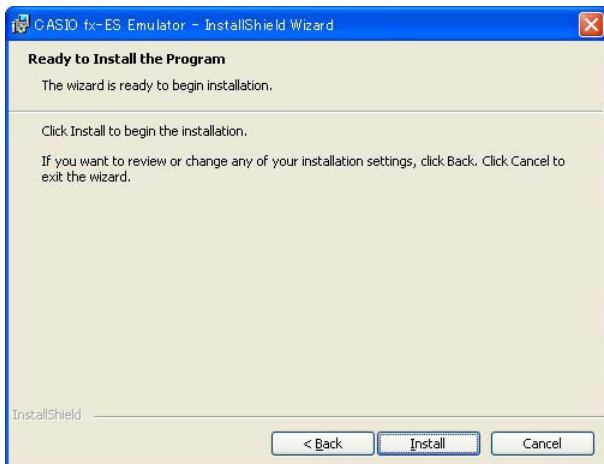


5. Carefully read the EULA.

6. If you agree to the terms and conditions of the license agreement, click “I accept the terms...”, and then click the [Next] button.
- If you do not agree to the terms and conditions of the license agreement, click “I do not accept the terms...” and then click [Cancel] button to exit the install procedure.



7. Perform either of the two following steps to specify the installation drive and folder.
- 7-a If you want to use default settings, simply click the [Next] button. This is the method you normally should use.
- 7-b If you want to specify a different folder, click the [Change] button. Select the folder you want and then click [Next].



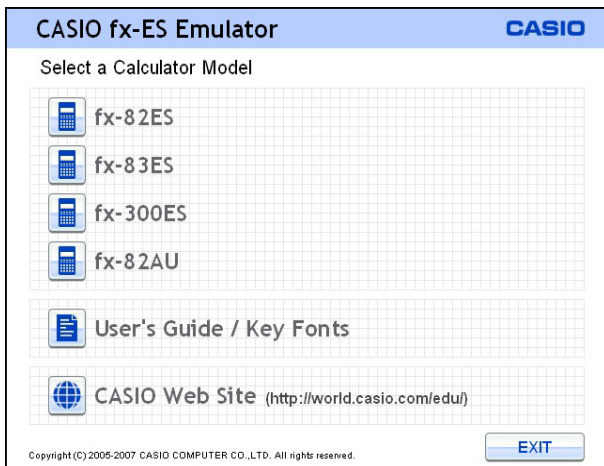
8. Click the [Install] button.
- This will start installation.

9. The dialog box shown below will appear when installation is complete.



10. Click the [Finish] button.

- The fx-ES Emulator Menu screen will appear after installation is complete.



11. Click [EXIT].

**Note**

- You could start up the emulator after step 10, if you like.
- If the fx-ES Emulator Menu screen does not appear in step 10, clicking "Click here if a jump is not performed automatically after installation is complete." will display it.



## To uninstall fx-ES Emulator

1. Display the Windows Control Panel.
2. Click [Add or Remove Programs].
3. On the list of applications that appears, select "CASIO fx-ES Emulator".
4. Click the [Remove] button.
5. Click the [Yes] button.
  - This completes the uninstall operation.

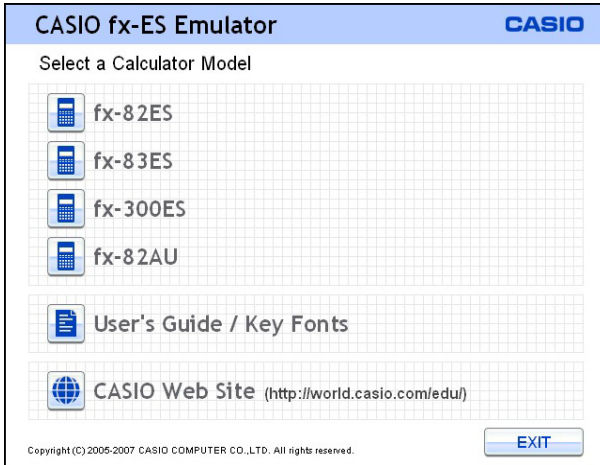
# 2 Using fx-ES Emulator

### Important!

fx-ES Emulator will not start up unless its CD-ROM is in the CD-ROM drive of your computer.

### To start up the emulator

1. Place the bundled CD-ROM into your computer's CD-ROM drive.
  - This will cause fx-ES Emulator to start up automatically and display its Menu screen.



To do this:	Click this option:
Start up the fx-82ES emulator	fx-82ES
Start up the fx-83ES emulator	fx-83ES
Start up the fx-300ES emulator	fx-300ES
Start up the fx-82AU emulator	fx-82AU
View a User's Guide (PDF) or open the key font folder	User's Guide / Key Fonts
Go to the CASIO website	CASIO Web Site
Exit fx-ES Emulator	[EXIT]

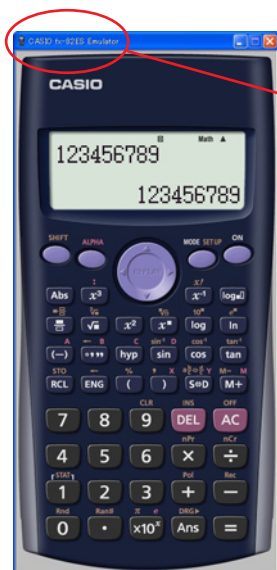
### If fx-ES Emulator does not start up automatically...

If fx-ES Emulator does not start up automatically when you set the CD-ROM into your computer's CD-ROM drive or if you start up your computer with the CD-ROM already in the drive, navigate to the Window's "My Computer" window and double-click "CD-ROM Drive". This will start up fx-ES Emulator.

If fx-ES Emulator still does not start up, navigate to the CD-ROM and double-click "fxES\_Emu.exe".

## 2. Select the calculator model you want to start up its emulator.






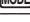

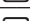


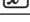
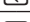



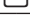
Example: Clicking "fx-82ES" will start up the fx-82ES Emulator.



The calculator model name will appear in the title bar.  
Example:  
CASIO fx-82ES Emulator

## ■ Emulator Operations

- To operate the virtual calculator on your computer screen, “press” its buttons by clicking them.
- You also can perform the following key operations on your computer keyboard.

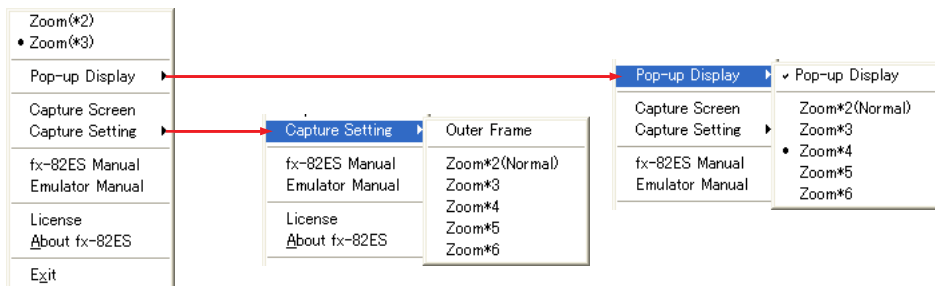
	fx-82ES fx-83ES fx-300ES	fx-82AU
Computer Keyboard	Calculator Key	
TAB, SPACE		
F1		
F2		
F3		
F4		
Home		
Enter		
Delete		
BackSpace		
↓↑→←		
^		
(		
)		
+ - * /		
0 - 9		
. (Period)		
Ctrl+C	Screen capture	

### Note

- The calculation speed of the emulators depends on the speed of your computer, and will be different from the calculating speed of the actual calculator.

## ■ Emulator Shortcut Menus

- Right-clicking your mouse while the mouse pointer is located on the emulator will display a shortcut menu.



Menu Item	Submenu Item	Description
Zoom(*2)		Makes the emulator image double the size of the actual calculator.*1 (initial default)
Zoom(*3)		Makes the emulator image triple the size of the actual calculator.
Pop-up Display	Pop-up Display	When selected (indicated by a check mark), displays the calculator LCD as a separate window.
	Zoom *2(Normal)	Makes the LCD window double normal size. (initial default)
	Zoom *3	Makes the LCD window triple normal size.
	Zoom *4	Makes the LCD window four times normal size.
	Zoom *5	Makes the LCD window five times normal size.
	Zoom *6	Makes the LCD window six times normal size.
Capture Screen		Captures the calculator LCD image to the Windows clipboard.
Capture Setting	Outer Frame	When selected (indicated by a check mark), the calculator LCD image is captured and a boundary is put around it.
	Zoom *2(Normal)	LCD image is captured at double its normal size. (initial default)
	Zoom *3	LCD image is captured at triple its normal size.
	Zoom *4	LCD image is captured at four times its normal size.
	Zoom *5	LCD image is captured at five times its normal size.
	Zoom *6	LCD image is captured at six times its normal size.

Menu Item	Submenu Item	Description
fx-**** Manual		Displays a calculator User's Guide.
Emulator Manual		Displays the fx-ES Emulator User's Guide.
License		Displays the end user license agreement (EULA).
About fx-****		Displays version information.
Exit		Exits the emulator.

\*1 Each dot of the actual calculator LCD corresponds to one pixel on the computer screen. In the case of double size, one dot corresponds to  $2 \times 2$  pixels.

### Note

- While the calculator LCD is displayed as a separate window, right-clicking the LCD also will display the shortcut menu.

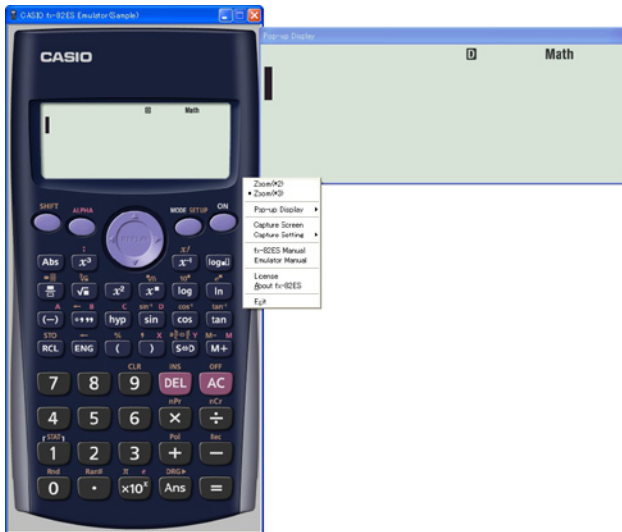
## To change the size of the emulator

1. Display the shortcut menu.
2. Select "Zoom(\*2)" or "Zoom(\*3)".

To display this size:	Select this command:
Double the actual calculator size • One LCD dot corresponds to $2 \times 2$ pixels.	Zoom(*2)
Triple the actual calculator size • One LCD dot corresponds to $3 \times 3$ pixels.	Zoom(*3)

## To display the LCD as a separate window

1. Display the shortcut menu.
2. Select “Pop-up Display” to display a sub-menu.
3. Select “Pop-up Display” to display the LCD as a separate window.
  - A check mark will be next to “Pop-up Display” on the sub-menu while the LCD is displayed as a separate window.
  - To close the separate window, select “Pop-up Display” again.



## To change the LCD window size

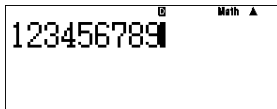
1. Display the shortcut menu.
2. Select “Pop-up Display” to display a sub-menu.
3. Select one of the zoom commands from “Zoom\*2” through “Zoom\*6” to change the size of the LCD window.
  - The currently selected window size will have “●” next to it.

## To capture the calculator LCD image to the Windows clipboard

1. Display the shortcut menu.
2. Select “Capture Screen” to capture an image of the LCD.
  - You can also use Ctrl+C in place of the above two steps to capture the LCD image.

## To specify a frame around the LCD image

1. Display the shortcut menu.
2. Select “Capture Setting” to display a sub-menu.
3. Select “Outer Frame”.
  - To remove the boundary from the LCD image, select “Outer Frame” again.



With boundary



Without boundary

## To specify the zoom factor for the captured LCD image

1. Display the shortcut menu.
2. Select “Capture Setting” to display a sub-menu.
3. Select a setting from “Zoom \*2” through “Zoom \*6” to specify the zoom factor.
  - The currently selected zoom factor size will have “●” next to it.



## To exit the emulator

1. Display the shortcut menu.
2. On the shortcut menu, select [Exit].
3. On the Menu screen that appears, click [EXIT].

### **Note**

- The settings listed below are saved whenever you exit the emulator. If you are using the emulator while logged on as a GUEST user, however, these settings will return to their initial defaults.
  - Calculator memory contents
  - Window position
  - Emulator zoom factor
  - LCD separate window setting
  - Capture zoom and boundary settings

**CASIO®**

**CASIO COMPUTER CO., LTD.**

6-2, Hon-machi 1-chome  
Shibuya-ku, Tokyo 151-8543, Japan

SA0612-A

## Free Manuals Download Website

<http://myh66.com>

<http://usermanuals.us>

<http://www.somanuals.com>

<http://www.4manuals.cc>

<http://www.manual-lib.com>

<http://www.404manual.com>

<http://www.luxmanual.com>

<http://aubethermostatmanual.com>

Golf course search by state

<http://golfingnear.com>

Email search by domain

<http://emailbydomain.com>

Auto manuals search

<http://auto.somanuals.com>

TV manuals search

<http://tv.somanuals.com>