

SA-76 SA-77

USER'S GUIDE GUÍA DEL USUARIO

Please keep all information for future reference.
Guarde toda información para tener como referencia futura.



CASIO

CASIO COMPUTER CO.,LTD.

6-2, Hon-machi 1-chome
Shibuya-ku, Tokyo 151-8543, Japan

MA1002-A Printed in China

This recycle mark indicates that the packaging conforms to the environmental protection legislation in Germany.
Esta marca de reciclaje indica que el empaquetado se ajusta a la legislación de protección ambiental en Alemania.

- Any reproduction of the contents of this manual, either in part or its entirety, is prohibited. Except for your own, personal use, any other use of the contents of this manual without the consent of CASIO is prohibited under copyright laws.
- IN NO EVENT SHALL CASIO BE LIABLE FOR ANY DAMAGES WHATSOEVER (INCLUDING, WITHOUT LIMITATION, DAMAGES FOR LOSS OF PROFITS, BUSINESS INTERRUPTION, LOSS OF INFORMATION) ARISING OUT OF THE USE OF OR INABILITY TO USE THIS MANUAL OR PRODUCT, EVEN IF CASIO HAS BEEN ADVISED OF THE POSSIBILITY OF SUCH DAMAGES.
- The contents of this manual are subject to change without notice.
- The actual appearance of the product may be different from that shown in the illustrations in this User's Guide.
- Company and product names used in this manual may be registered trademarks of others.

NOTICE
This equipment has been tested and found to comply with the limits for a Class B digital device, pursuant to Part 15 of the FCC Rules. These limits are designed to provide reasonable protection against harmful interference in a residential installation. This equipment generates, uses and can radiate radio frequency energy and, if not installed and used in accordance with the instructions, may cause harmful interference to radio communications. However, there is no guarantee that interference will not occur in a particular installation. If this equipment does cause harmful interference to radio or television reception, which can be determined by turning the equipment off and on, the user is encouraged to try to correct the interference by one or more of the following measures:

- Reorient or relocate the receiving antenna.
- Increase the separation between the equipment and receiver.
- Connect the equipment into an outlet on a circuit different from that to which the receiver is connected.
- Consult the dealer or an experienced radio/TV technician for help.

FCC WARNING

Changes or modifications not expressly approved by the party responsible for compliance could void the user's authority to operate the equipment.

TO REDUCE THE RISK OF FIRE OR ELECTRIC SHOCK, REFER SERVICING TO QUALIFIED SERVICE PERSONNEL.

Important Information for Parents!

- Parents should please note the following important information before letting children use this product.
- Before using the AD-E95100L adaptor to power the unit, be sure to check the AC adaptor for any damage first. Carefully check the power cord for breakage, cuts, exposed wire and other serious damage. Never let children use an AC adaptor that is seriously damaged.
- Never attempt to recharge batteries.
- Do not use rechargeable batteries.
- Never mix batteries of different types.
- Never mix old batteries with new ones.
- Use recommended batteries or equivalent types.
- Always make sure that positive (+) and negative (-) poles are facing correctly as indicated near the battery compartment.
- Replace batteries as soon as possible after any sign they are getting weak.
- Do not short-circuit the battery terminals.
- The product is not intended for children under 3 years.
- Use only CASIO AD-E95100L adaptor.
- The AC adaptor is not a toy.
- Be sure to disconnect the AC adaptor before cleaning the product.

This mark applies in EU countries only.



Manufacturer:
CASIO COMPUTER CO.,LTD.
6-2, Hon-machi 1-chome, Shibuya-ku, Tokyo 151-8543, Japan
Responsible within the European Union:
CASIO EUROPE GmbH
Case-Platz 1, 22448 Norderstedt, Germany

Getting Ready

Power Supply

Prepare a household power outlet or batteries.

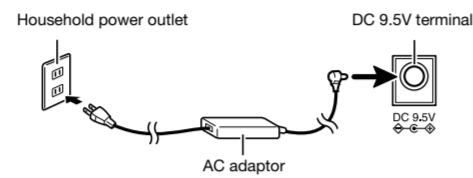
IMPORTANT!

- Be sure to comply with the "Safety Precautions" provided in this manual. Incorrect use of this product creates the risk of electric shock and fire.
- Always make sure that the Digital Keyboard is turned off before plugging in or unplugging the AC adaptor, or before loading or removing batteries.

Using a Household Power Outlet

Make sure that you use only the AC adaptor specified for this keyboard. Use of a different type of AC adaptor can cause malfunction.

Specified AC Adaptor: AD-E95100L
(JEITA Standard plug)



IMPORTANT!

- The AC adaptor will become warm to the touch after very long use. This is normal and does not indicate malfunction.
- To prevent breaking of the wire, take care to avoid putting any type of load on the power cord.

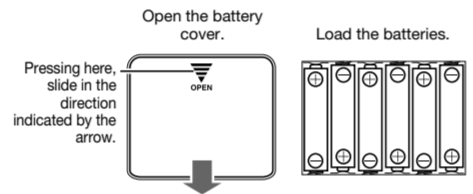


Using Batteries

- You can use six AA-size batteries for power.
- Use alkaline or zinc-carbon batteries.
- Never use oxyride or any other nickel based batteries.

Open the battery cover on the bottom of the Digital Keyboard, load the batteries, and then close the cover.

- Take care to ensure that the positive (+) and negative (-) ends of the batteries are facing correctly.



IMPORTANT!

- Battery life is approximately six hours of continuous use (based on zinc-carbon batteries, normal play). Any of the symptoms below may indicate batteries are low and need to be replaced as soon as possible.

- Dim display.
- Distorted sound.
- Sudden, unexpected sounding of keyboard notes or demo songs.
- Abnormal play of built-in songs, etc.
- Sudden, unexpected failure of notes to sound.

NOTE

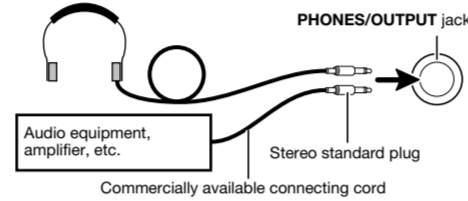
- The Digital Keyboard will turn off automatically to preserve battery power if you do not perform any operation for about six minutes (Auto Power Off). Hold down the TONE button while turning on the keyboard to disable Auto Power Off.

Using Headphones or Audio Equipment

Connect headphones or audio equipment to the PHONES/OUTPUT jack on the back of the Digital Keyboard.

- If the plug you are using does not match the jack, use a commercially available adaptor plug.

Commercially available headphones



IMPORTANT!

- Do not listen to very high volume output over headphones for long periods. Doing so creates the risk of hearing damage.
- When connecting a musical instrument amplifier, set the Digital Keyboard volume to a low level and use the amplifier's volume control to adjust to the desired volume level.

Safety Precautions

Before using the instrument, be sure to carefully read through the instructions contained in this manual.

Symbols

Various symbols are used in this user's guide and on the product itself to ensure that the product is used safely and correctly, and to prevent injury to the user and other persons as well as damage to property. Those symbols along with their meanings are shown below.

DANGER

This symbol indicates information that, if ignored or applied incorrectly, creates the danger of death or serious personal injury.

WARNING

This indication stipulates matters that have the risk of causing death or serious injury if the product is operated incorrectly while ignoring this indication.

CAUTION

This indication stipulates matters that have the risk of causing injury as well as matters for which there is the likelihood of occurrence of physical damage only if the product is operated incorrectly while ignoring this indication.

Symbol Examples

This triangle symbol (Δ) means that the user should be careful. (The example at left indicates electrical shock caution.)

This circle with a line through it (⊘) means that the indicated action must not be performed. Indications within this symbol are actions that are specifically prohibited. (The example at left indicates that disassembly is prohibited.)

The black dot (●) means that the indicated action must be performed. Indications within this symbol are actions that are specifically instructed to be performed. (The example at left indicates that the power plug must be unplugged from the electrical socket.)

DANGER

Alkaline Batteries

- Perform the following steps immediately if fluid leaking from alkaline batteries ever gets into your eyes.
 - Do not rub your eyes! Rinse them with water.
 - Contact your physician immediately.
- Leaving alkaline battery fluid in your eyes can lead to loss of sight.

WARNING

Smoke, Strange Odor, Overheating

Continued use of the product while it is emitting smoke, a strange odor, or heat creates the risk of fire and electric shock. Take the following steps immediately.

- Turn off power.
- If you are using the AC adaptor for power, unplug it from the wall outlet.
- Contact your original retailer or an authorized CASIO Service Provider.

AC Adaptor

- Misuse of the AC adaptor creates the risk of fire and electric shock. Always make sure you observe the following precautions.

- Be sure to use only the AC adaptor that is specified for this product.
- Use only a power source whose voltage is within the rating marked on the AC adaptor.
- Do not overload electrical outlets and extension cords.
- Never place heavy objects on the cord or subject it to heat.
- Never try to modify the cord or subject it to excessive bending.
- Never twist or stretch the cord.
- Should the electric cord or plug become damaged, contact your original retailer or authorized CASIO Service Provider.
- Never touch the AC adaptor while your hands are wet. Doing so creates the risk of electric shock.
- Use the AC adaptor where it will not be splashed with water. Water creates the risk of fire and electric shock.
- Do not place a vase or any other container filled with liquid on top of the AC adaptor. Water creates the risk of fire and electric shock.

Batteries

Misuse of batteries can cause them to leak, resulting in damage to nearby objects, or to explode, creating the risk of fire and personal injury. Always make sure you observe the following precautions.

- Never try to take batteries apart or allow them to become shorted.
- Never expose batteries to heat or dispose of them by incineration.
- Never mix old batteries with new ones.
- Never mix batteries of different types.
- Do not charge the batteries.
- Make sure the positive (+) and negative (-) ends of the batteries are facing correctly.

Do not incinerate the product.

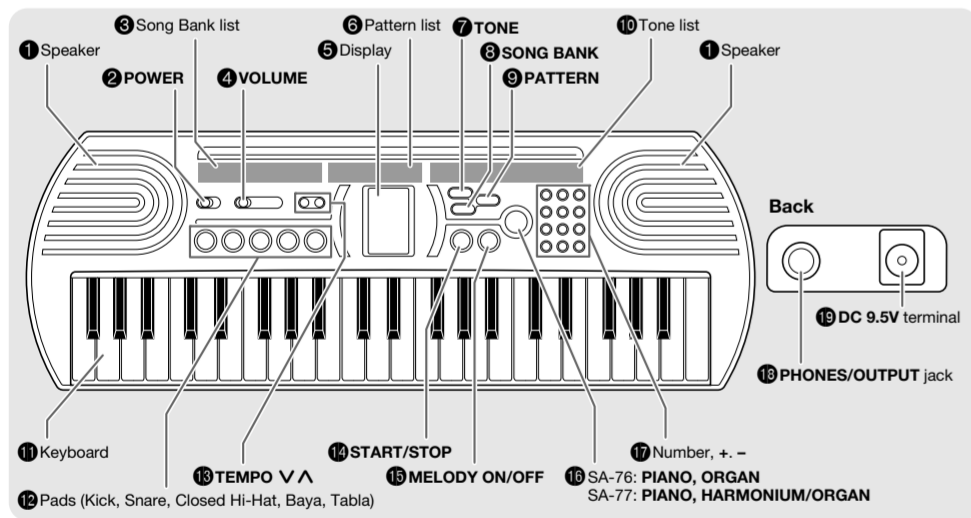
Never throw the product into fire. Doing so can cause it to explode, creating the risk of fire and personal injury.

Water and Foreign Matter

Water, other liquids, and foreign matter (such as pieces of metal) getting into the product create the risk of fire and electric shock. Take the following steps immediately.

- Turn off power.
- If you are using the AC adaptor for power, unplug it from the wall outlet.
- Contact your original retailer or an authorized CASIO Service Provider.

General Guide

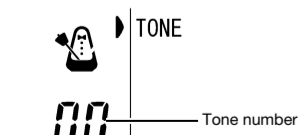


Playing Something on the Digital Keyboard

- Use the (POWER) switch to turn on power.
- Try using the keyboard and pads to produce sounds.
- Use the (VOLUME) slider to adjust the volume level.

Using Built-in Tones

- Press the (TONE) button.



- In the console tone list or the tone list in this User's Guide, find the tone you want and note its number. Use the (Number, +, -) buttons to enter the tone number.
 - To select the "ORG ELEC PIANO 2" tone, for example, press 0 and then 3.
 - You also can use the + (increment) and - (decrement) buttons to change the displayed tone number.

- Press keys on the keyboard to play notes using the selected tone.

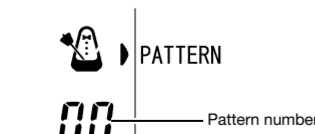
NOTE

- You can select tones 00 and 16 simply by pressing the (TONE) button. Each press of the (TONE) button toggles between tones 00 and 16.

Playing an Auto Accompaniment Pattern

Auto Accompaniment patterns let you select from a number of different backup accompaniments that match a variety of different musical genres.

- Press the (PATTERN) button.

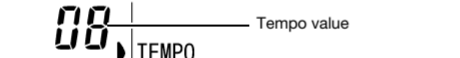


- In the console pattern list or the pattern list in this User's Guide, find the pattern you want and note its number. Use the (Number, +, -) buttons to enter the pattern number.
 - You also can enter a pattern number using the same procedure as tone number input.

General Guide

- Press the (START/STOP) button to sound the pattern you selected.

- Press the (START/STOP) button again to stop the pattern.
- You can use the (TEMPO) (slower) and (faster) buttons to adjust the speed of pattern play to one of 16 levels.



- Press the (TONE) or (PATTERN) button to exit the tempo screen.

Playing a Song Bank Song

- Press the (SONG BANK) button.



- On the Song Bank list, find the song you want and note its number. Use the (Number, +, -) buttons to enter the song number.

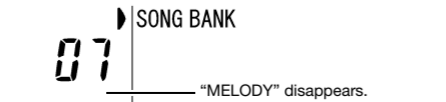
- You also can enter a song number using the same procedure as tone number input.
- To set up for successive play of all of the Song Bank songs, display "AL". Display "AL" by using the + and - buttons to scroll to it, or press any number button from 1 through 9 without pressing 0 first.

- Press the (START/STOP) button to start playback of the Song Bank song(s).

- Press the (START/STOP) button again to stop playback.
- You can use the (TEMPO) (slower) and (faster) buttons to adjust the speed of Song Bank play to one of 16 levels. The procedure for adjusting the speed (tempo) is the same as that for Auto Accompaniment patterns. Press the (TONE) or (SONG BANK) button to exit the tempo screen.
- You cannot adjust tempo when playing back all songs (AL).

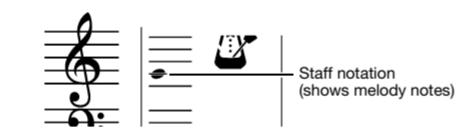
To turn off the melody part of a Song Bank song and play along on the keyboard

- Press the (MELODY ON/OFF) button. This will turn off the melody part of the Song Bank song.



General Guide

- Press the (START/STOP) button. In intro count will sound and then the song, without melody part, will start to play. You can play the melody on the keyboard.

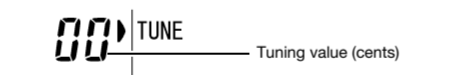


NOTE

- The keyboard is disabled during play of a Song Bank song with the melody part turned on.
- You can turn off the melody part only when playing back a specific Song Bank song. You cannot turn off the melody part when playing back all songs (AL).

Fine Tuning (Tuning)

- Hold down the (TONE) and (PATTERN) buttons at the same time.



- Use the + (raise) and - (lower) buttons to adjust the tuning to the value you want.
 - You can adjust tuning within a range of -99 to +99 cents (100 cents = 1 semitone).
 - After a short while, the display will exit the tuning screen.

Initial Default Settings

Whenever you turn on the Digital Keyboard, it returns the tone number, song number, and all other settings to their initial defaults. None of the settings you made the last time you used the Digital Keyboard are saved.

Reference

Troubleshooting

- There is no sound when I press keyboard keys.
 - Check to make sure batteries are loaded or that the AC adaptor is connected correctly. (See "Power Supply".)
 - Unplug the plug from the (PHONES/OUTPUT) jack if one is connected.
 - The keyboard is disabled during playback of a Song Bank song with the melody part turned on. (See "Playing a Song Bank Song".)
 - This Digital Keyboard is capable of 8-note polyphony. Nothing will sound after the eighth note.

- Sound and display operations are not normal.

Battery power may be low. See "Power Supply".

Specifications

Keyboard : 44 mini-size keys, 3.5 octaves
Polyphony : 8 notes maximum
Tones : 100
Pad : 5
Patterns : 50
Song Bank : 10 tunes; melody off
Tuning : A4 = 440Hz ±99 cents
Speakers : φ8cm x 2 (output: 0.8W + 0.8W)
Power Jack : DC 9.5V

Phones/Output jack:
Stereo standard jack (Output is monaural.)
Output Impedance: 82Ω
Output Voltage: 1.2V (RMS) MAX

Power Supply : 2-way
Batteries: 6 AA-size zinc-carbon batteries or alkaline batteries

Battery Life: Approximately 6 hours continuous operation on zinc-carbon batteries

- AC Adaptor: AD-E95100L
- Auto Power Off: Approximately 6 minutes after last key operation

Power Consumption: 9.5V ≈ 3.8W
Dimensions : 60.4 x 21.1 x 5.7 cm
(23 13/16 x 8 9/16 x 2 1/4 inch)
Weight : Approximately 1.4 kg (3.1 lbs) (without batteries)

NOTE

- Design and specifications are subject to change without notice.
- You can get information about accessories that are separately for this product from the CASIO keyboard catalog available from your retailer, and from the CASIO website at the following URL.
<http://world.casio.com/>

Safety Precautions

Disassembly and Modification

Never try to take the product apart or modify it in any way. Doing so creates the risk of electric shock, burn injury, or other personal injury. Leave all internal inspection, adjustment, and maintenance up to your original retailer or authorized CASIO Service Provider.

Dropping and Impact

Continued use of this product after it has been damaged by dropping or subjecting it to strong impact creates the risk of fire and electric shock. Take the following steps immediately.

- Turn off power.
- If you are using the AC adaptor for power, unplug it from the wall outlet.
- Contact your original retailer or an authorized CASIO Service Provider.

Plastic Bags

Never place the plastic bag the product comes in over your head or in your mouth. Doing so creates the risk of suffocation.

Particular care concerning this precaution is required where small children are present.

Location

Avoid locating the product on an unstable stand, on an uneven surface, or any other unstable location. An unstable location can cause the product to fall over, creating the risk of personal injury.

CAUTION

AC Adaptor

- Misuse of the AC adaptor creates the risk of fire and electric shock. Always make sure you observe the following precautions.

- Do not locate the electric cord near a stove or other sources of heat.
- Never pull on the cord when unplugging from the electrical outlet. Always grasp the AC adaptor when unplugging.
- Insert the AC adaptor into the wall outlet as far as it will go.
- Unplug the AC adaptor from the wall outlet during lightning storms or before leaving on a trip or other long-term absence.
- To keep dust from building up in the area between the prongs of the power plug, unplug it from the power outlet and use a dry cloth or vacuum cleaner to remove dust at least once a year.
- Never use detergent to clean the power cord, especially the plug and jack parts.

Relocating the Product

Before relocating the product, always unplug the AC adaptor from the wall outlet and disconnect all other cables and connecting cords. Leaving cords connected creates the risk of damage to the cords, fire, and electric shock.

Cleaning

Before cleaning the product, always unplug the AC adaptor from the wall outlet first. Leaving the AC adaptor plugged in creates the risk of damage to the AC adaptor, fire, and electric shock.

Reference

Tone List

PIANO	52 SYNTH-BRASS 1
00 GRAND PIANO	53 SYNTH-BRASS 2
01 BRIGHT PIANO	REED
02 ELEC.PIANO 1	54 SOPRANO SAX
03 ELEC.PIANO 2	55 ALTO SAX
04 HARPISCHORD	56 TENOR SAX
05 CLAVI	57 BARITONE SAX
06 CELESTA	58 OBOE
07 GLOCKENSPIEL	59 ENGLISH HORN
08 VIBRAPHONE	60 BASSOON
09 MARIMBA	61 CLARINET
10 XYLOPHONE	62 PICCOLO
11 TUBULAR BELL	63 FLUTE
ORGAN	64 RECORDER
12 DRAWBAR ORGAN	65 PAN FLUTE
13 PERC.ORGAN	66 WHISTLE
14 ROCK ORGAN	67 OCARINA
15 CHURCH ORGAN	SYNTH
16 (SA-76) REED ORGAN	68 SQUARE LEAD
17 (SA-77) HARMONIUM	69 SAW LEAD
18 ACCORDION	70 CALLIOPE
19 HARMONICA	71 VOICE LEAD
20 BANDONEON	72 BASS-LEAD
GUITAR	73 WARM PAD
21 STEEL STR.GUITAR	74 SPACE CHOR
22 JAZZ GUITAR	75 BOWED GLASS
23 CLEAN GUITAR	76 METAL PAD
24 MUTE GUITAR	77 RAIN DROP
25 OVERDRIVE GT	78 SOUND TRACK
26 DISTORTION GT	79 ATMOSPHERE
27 GT HARMONICS	80 BRIGHTNESS
BASS	ETHNIC
28 ACOUSTIC BASS	81 SITAR
29 FINGERED BASS	82 BANJO
30 PICKED BASS	83 KOTO
31 FRETLESS BASS	84 THUMB PIANO
32 SLAP BASS	85 SANTUR
33 SYNTH-BASS 1	86 FIDDLE
34 SYNTH-BASS 2	87 SHANAI
STRINGS	PERCUSSION
35 VIOLIN	88 STEEL DRUMS
36 CELLO	89 WOOD BLOCK
37 CONTRABASS	90 TAIKO
38 PIZZICATO STRINGS	91 MELODIC TOM
39 HARP	92 SYNTH-DRUM
40 STRING ENSEMBLE	93 SEASHORE
41 SLOW STRINGS	94 BIRD
42 CHOIR AAHS	95 TELEPHONE
43 VOICE DOO	96 HELICOPTER
44 SYNTH-VOICE	

Free Manuals Download Website

<http://myh66.com>

<http://usermanuals.us>

<http://www.somanuals.com>

<http://www.4manuals.cc>

<http://www.manual-lib.com>

<http://www.404manual.com>

<http://www.luxmanual.com>

<http://aubethermostatmanual.com>

Golf course search by state

<http://golfingnear.com>

Email search by domain

<http://emailbydomain.com>

Auto manuals search

<http://auto.somanuals.com>

TV manuals search

<http://tv.somanuals.com>