

Century Series Air Pot Brewers

Models:
APT18, APT18WT, APT100WT



APT18WT



APT100WT

PLUMBING

WATER INLET 1/4" FLARED COPPER OR FLEX HOSE - 20 PSI MINIMUM

ELECTRICAL

LINE CORD INCLUDED

BODY CONSTRUCTION

STAINLESS STEEL (ALSO AVAILABLE IN BLACK)

Cecilware sells value... Worldwide

Cecilware Corporation

43-05 20th Avenue, Long Island City, NY 11105-1295

718-932-1414 Fax: 718-932-7860

800-935-2211 E-Mail: customer.service@cecilware.com www.cecilware.com



Operation Manual
NI53A June 2008

Airpot Coffee Brewers

SPECIFICATIONS AND OPERATION MANUAL

Electrical Specifications:

Model No.	Volts	Phase	Hz.	Watts	Amps	Receptacle Nema No.	Circuit Breaker
APT18	120	1	50/60	1.8 Kw	15	5-15R	15
APT18WT	120	1	50/60	1.8 Kw	15	5-15R	15
APT100WT	120/240	1	50/60	5.0 Kw	23	L14-30R	30

Line cord included. "WT" with Water Tap, "X" for export.

NOTES: APT100 Model includes twist lock plug wired for 4 wire 120/240V including **Neutral** and **Ground**.

(120V Models - available on special order and requires a 15amp circuit breaker.)

Water Connections: ¼" flared water inlet fitting and flare nuts for ¼" O.D. copper tubing with a minimum water pressure of 20 psi.

Dimensional Specifications:

MODEL	Width (Inches)	Depth (Inches)	Height (Inches)
APT18	8	17 1/4	25 1/2
APT100	16	17 1/4	25 1/2

INSTALLATION AND START-UP INSTRUCTIONS FOR AIRPOT BREWER

Not Included with this Brewer unless ordered separately

2.2 liter Airpot, Part No. V223A

Things to note when Brewing Coffee

- This brewer is set for 2.2 liter capacity Airpot.
- Volume can easily be adjusted for 1.9 liter or 2.5 liter Airpots.

WATER HOOK-UP (Check Local Plumbing Codes)

The National Sanitation Foundation (NSF®) requires the following for an NSF approved hook-up:

1. A quick disconnect water connection or enough extra coiled tubing (at least 2x the depth of the unit) so that it can be moved to clean underneath.
2. An approved back flow prevention device, such as a double check valve, must installed between brewer and water supply.

Water Connection:

APT Brewers are supplied with 1/4" flared water inlet fittings and flare nuts.

Use a 1/4" diameter copper tubing to connect brewer to a cold water supply line with a minimum water pressure of 20 psi.

HIGHLY RECOMMENDED: An external water supply shut-off valve near the brewer and a water purifier filter for better tasting fresh brewed coffee.

Electrical Connection:

APT18 - 120 volt, 1.8 kw - Brewers require a single use (dedicated) 15 amp grounded receptacle.

APT100 – 120/240 volt, 6.4 kw - Brewers require a single use (dedicated) 30 amp twist lock grounded receptacle.

TANK PRIMING PROCEDURES

THESE INSTRUCTIONS ARE FOR INITIAL PRIMING ONLY AND DO NOT HAVE TO BE REPEATED FOR NORMAL OPERATION.

NOTE: The **Heater toggle switch**, located in back of unit, **or** under the top cover, must be in the **OFF POSITION.**

1. Remove sample filter pack from brew funnel and insert brew funnel back into machine.
2. Place an empty Air Pot directly under brew funnel.
3. Plug the power cord into a proper receptacle.
4. Activate the **RED Power Switch**. The tank will start filling automatically. Allow approximately 4-5 minutes for the tank to fill.
5. After the water tank is filled, **activate** the **Heater Switch ON POSITION**. Allow approximately 15-20 minutes for the water to reach a brew temperature (197°F). The heat up time will depend on the water inlet temperature, the input voltage and the wattage of the elements in the machine.
When the **(Green) Ready** Light comes on the machine is ready to start brewing.
6. Press Brew Button:

BREWING INSTRUCTIONS FOR COFFEE

1. Place a paper filter into brew funnel and add 2.5 oz. of fresh ground coffee into the filter. Place the funnel back into brew head of machine.
2. Unlock the Air Pot Cover and remove the Pump Assembly from the Air Pot.
3. Place the Air Pot with cover open on the support shelf under the funnel.
4. When the Green READY light inside the Brew Switch comes on, depress the Brew Switch.
Note: Allow 5 to 6 minutes for the complete brew cycle. DO NOT remove funnel from the brewer until it has completely stopped dripping
6. Remove AIR POT from the brewer, **insert the air pump tube**, and snap the top closed.
7. Serve fresh brewed coffee from dispenser nozzle by pushing down the round large button on top of the cover.

ADJUSTMENTS:

Timer Adjustments (To adjust total volume of COFFEE)

1. Turn the Power Switch to OFF and remove the top cover.
2. Locate BREW TIMER and adjust as follows:
3. For MORE volume, turn TIMER KNOB CLOCKWISE.
4. For LESS volume, turn TIMER KNOB COUNTERCLOCKWISE.
5. Go through a complete brew cycle and repeat adjustments if necessary.
CAUTION: Turn TIMER KNOB only in SMALL increments at a time.

Thermostat Adjustments

Thermostat is factory set for proper operating temperature of 197°F to 203°F with the adjustment Knob set to the maximum clockwise position. If field adjustments are needed proceed as follows:

To DECREASE temperature, **turn the control shaft** slightly to the left **COUNTERCLOCKWISE**.

To INCREASE temperature, proceed as follows: With the control knob ALREADY TURNED TO ITS MAXIMUM CLOCKWISE POSITION, locate the small, slotted ADJUSTMENT SCREW inside the hollow shaft. By using a narrow blade screwdriver **engage the slotted adjustment screw and turn it an 1/8 of a turn slowly to the left (counterclockwise)** until a click is heard and the Green Ready Light goes OFF.

NOTE: Measure the water temperature at the head with the spray head removed in order to capture a solid stream of hot water. Be sure to REPLACE spray head afterwards.
In HIGH ALTITUDE locations, (5000 ft. above sea level) the thermostat setting will have to be lowered to prevent boiling.

MAINTENANCE TIPS.

1. Remove and clean spray head at least once a week. In hard water areas, inspect and clean every other day.
2. If excessive build up of lime is present, de-lime or replace the heating tank.

CLEANING INSTRUCTIONS

Use a mild dishwashing detergent to clean the STAINLESS STEEL, PLASTIC BREW FUNNELS and AIRPOTS. Rinse thoroughly. Clean and Polish the outer surfaces of the STAINLESS STEEL AIRPOTS and BREWER with a STAINLESS STEEL CLEANER & POLISH such as the 3M™ Stainless Steel Cleaner & Polish, which is U.S.D.A. approved.

TROUBLESHOOTING GUIDE.

Brewing Problems.

Weak Coffee

1. Low water Temperature ----- Adjust thermostat, should be between 197°F - 203°F
2. Spray Head clogged ----- Remove and clean weekly or as needed
3. Too Coarse Coffee Grind ----- Should be Drip Grind type
4. Not enough Coffee ----- Use a minimum of 2 oz. Of coffee

No water from Spray head when brew switch is depressed.

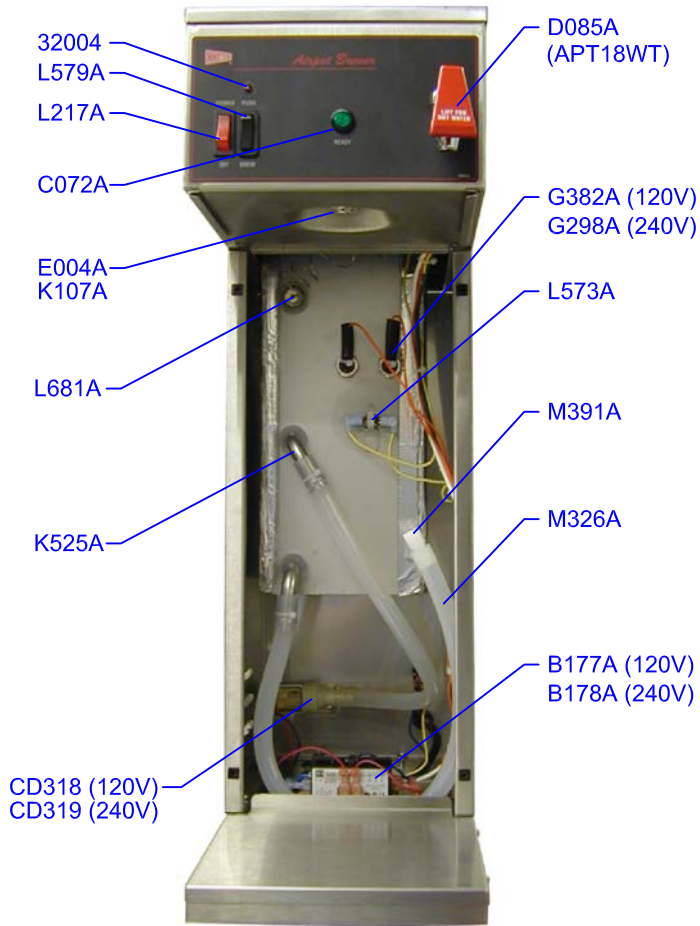
Note: Allow 30 seconds for time delay.

1. Power Switch is off or unit is unplugged.
2. Water Supply is off
3. Hot Water Tank is not full
4. Defective water inlet valve or dispense valve
5. Defective brew switch
6. Defective timer
7. Inlet filter Clogged

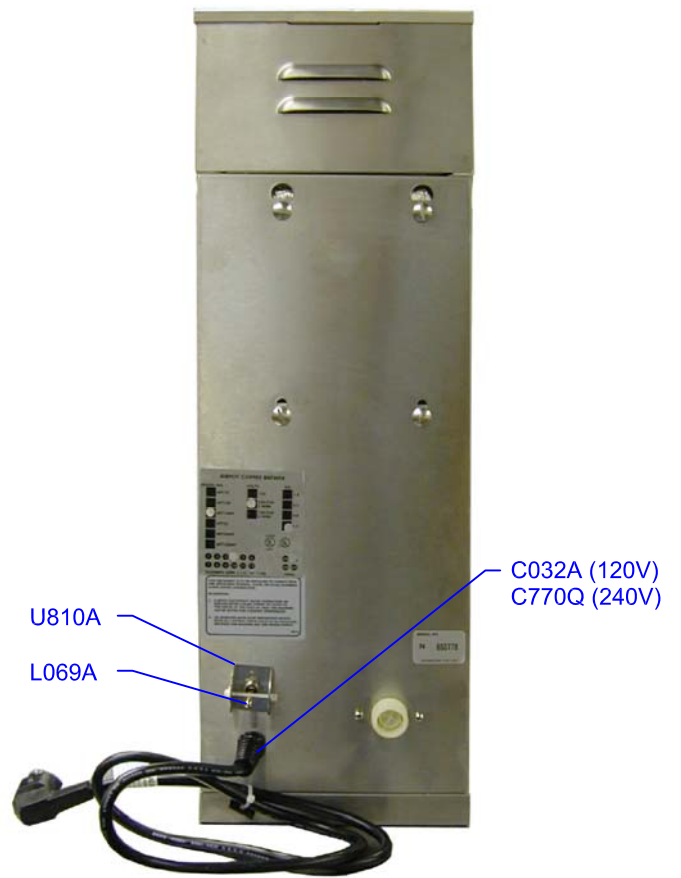
Water from spray head not hot.

1. Heater switch is off
2. Thermostat is off or defective.
3. High limit switch has tripped and does not reset – replace high limit switch
3. Tank heater is defective

APT18 - FRONT COVER REMOVED



APT18 - BACK



**PLASTIC FUNNEL
(STANDARD)**



**ST. STEEL FUNNEL
(OPTIONAL)**



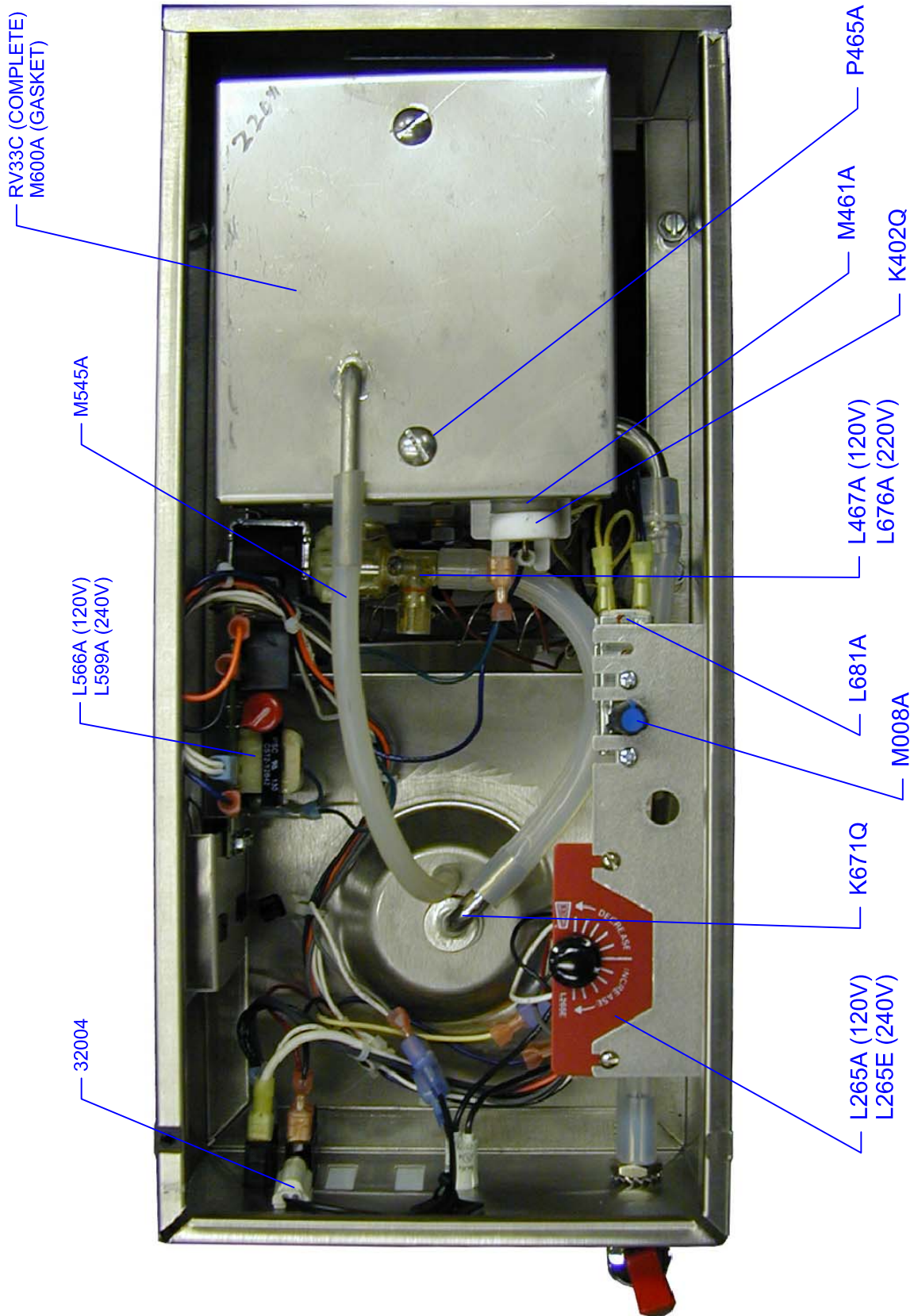
HOSE NUT ASS'Y



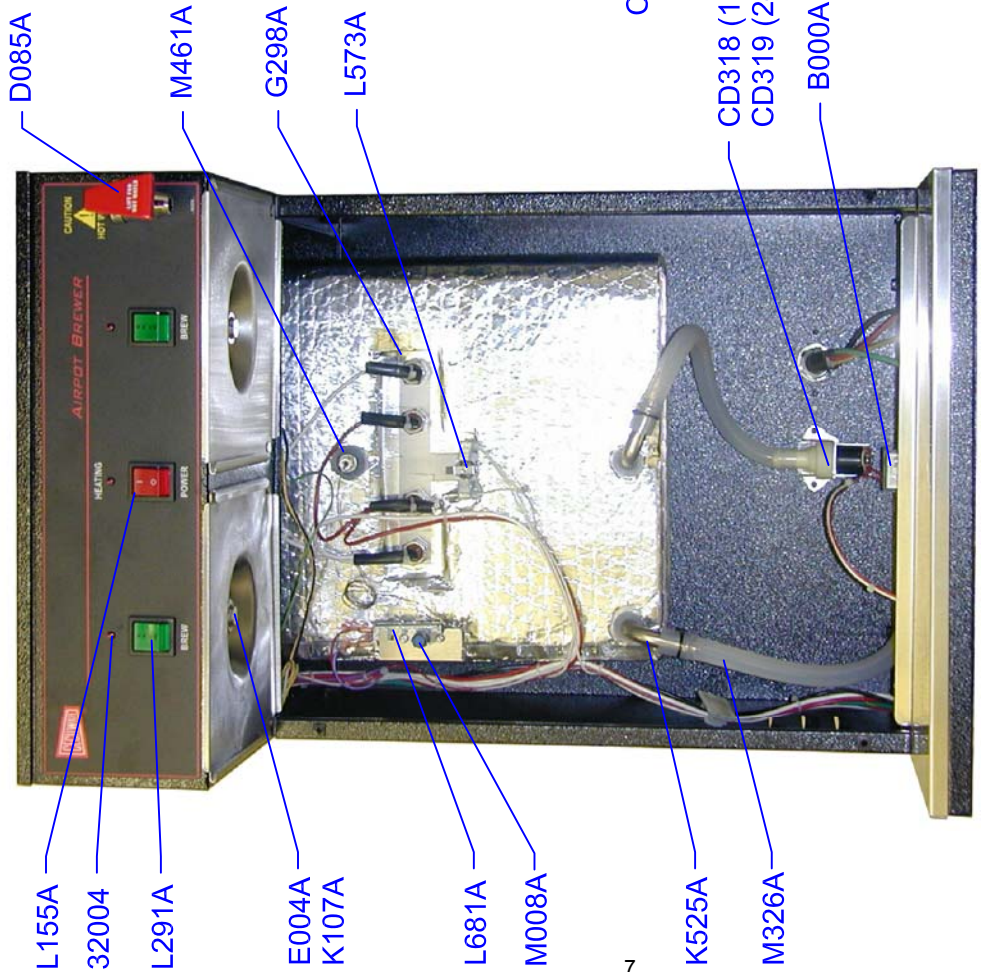
**LEGS 3/4 IN ADJ
(SET OF 4)**



APT18 - TOP COVER REMOVED



APT100 - FRONT COVER REMOVED



PLASTIC FUNNEL (STANDARD)



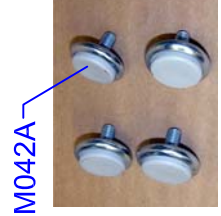
ST. STEEL FUNNEL (OPTIONAL)



HOSE NUT ASSY



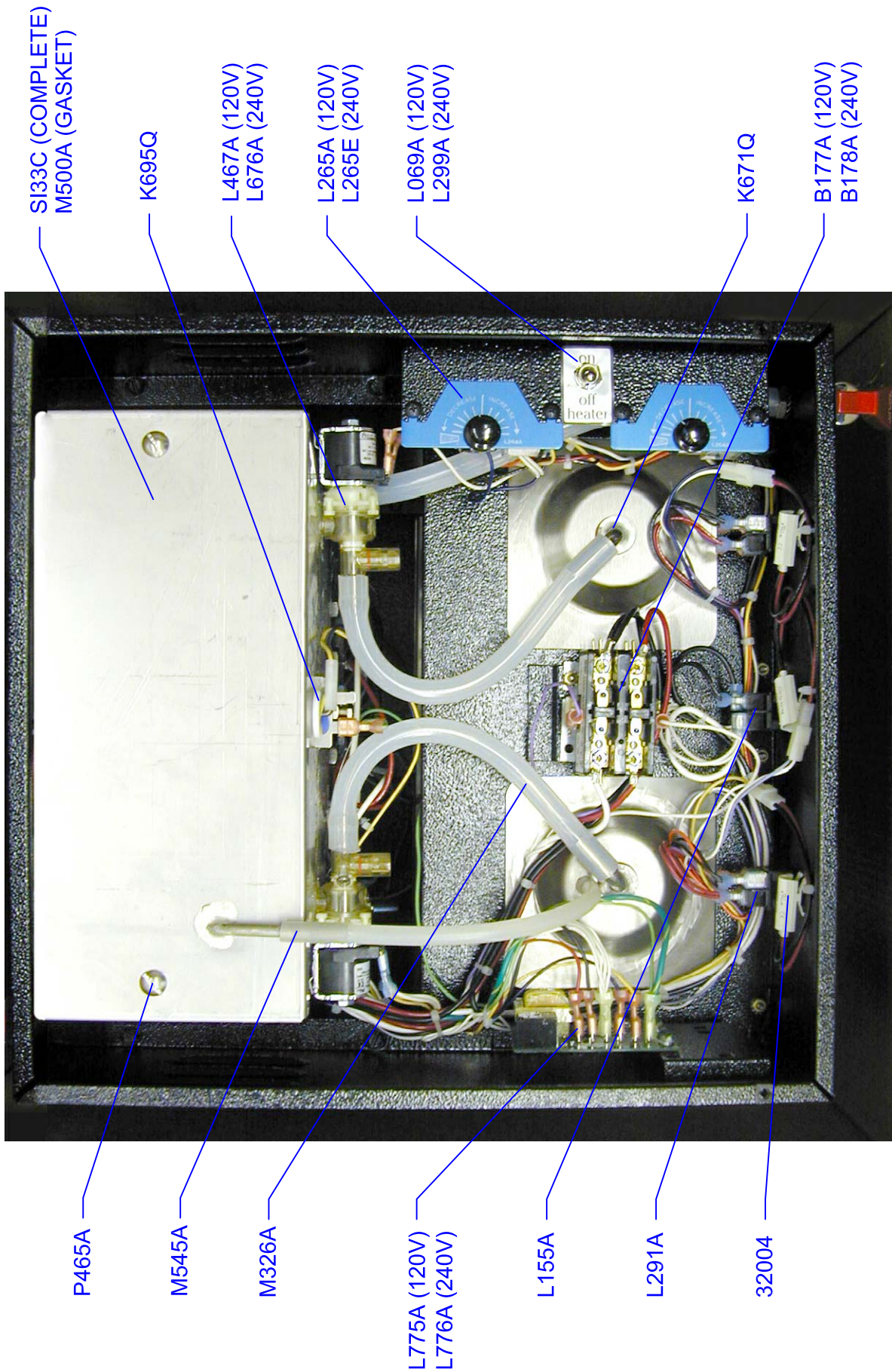
LEGS 3/4 IN ADJ (SET OF 4)



APT100 - BACK

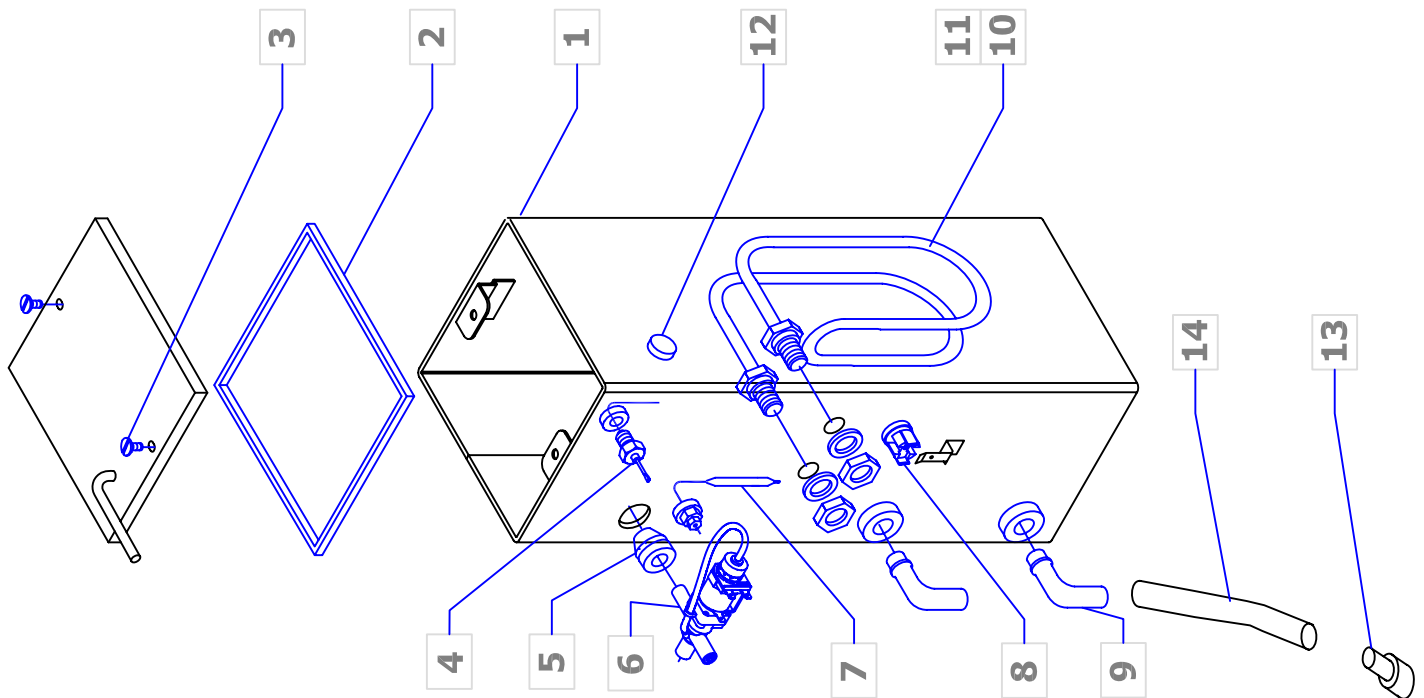


APT100 - TOP COVER REMOVED



WATER TANK No.RV33C 3.3 Gal

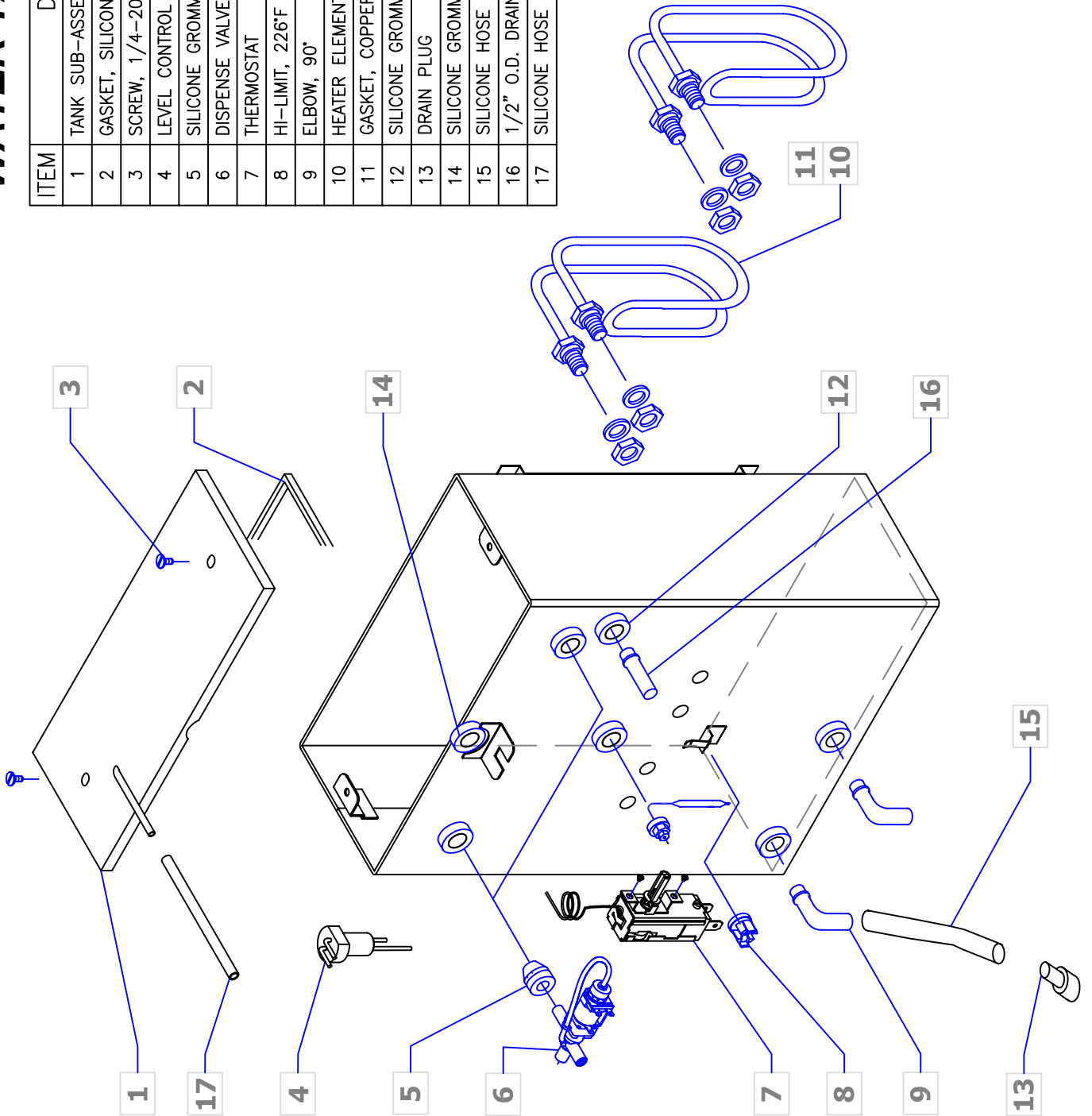
ITEM	DESCRIPTION	PART NO	QTY
1	TANK SUB-ASSEMBLY	RV33Q	1
2	GASKET, SILICONE BUTT SPLCED	M600A	1
3	SCREW, 1/4-20 x 5/8 S.S.	P465A	2
4	LEVEL CONTROL PROBE	K402Q	1
5	SILICONE GROMMET, 12mm	M461A	5
6	DISPENSE VALVE 110V AUK MULLER	L467A	1
7	THERMOSTAT	L681A	1
8	HI-LIMIT, 226°F CUTOUT	L573A	1
9	ELBOW, 90°	K525A	1
10	HEATER ELEMENT 120 V, 1750W	G382A	1
11	GASKET, COPPER/ TEFLON	M730A	2
12	SILICONE GROMMET, PLUG	M494A	1
13	DRAIN PLUG	M391A	1
14	SILICONE HOSE	M326A	1



RV33C

WATER TANK SI33C 4.6 Gal

ITEM	DESCRIPTION	PART NO	QTY
1	TANK SUB-ASSEMBLY	SI33Q	1
2	GASKET, SILICONE BUTT SPLICED	M500A	1
3	SCREW, 1/4-20 x 5/8 S.S.	P465A	2
4	LEVEL CONTROL PROBE	K695Q	1
5	SILICONE GROMMET, 12mm	M461A	5
6	DISPENSE VALVE 110V AUK MULLER	L467A	2
7	THERMOSTAT	L681A	1
8	HI-LIMIT, 226°F CUTOUT	L573A	1
9	ELBOW, 90°	K525A	3
10	HEATER ELEMENT 120 V, 1750W	G298A	2
11	GASKET, COPPER/ TEFLON	M730A	4
12	SILICONE GROMMET, PLUG	M494A	1
13	DRAIN PLUG	M391A	1
14	SILICONE GROMMET, 15mm	M462A	1
15	SILICONE HOSE	M326A	1
16	1/2" O.D. DRAIN TUBE	K544A	1
17	SILICONE HOSE	M545A	1

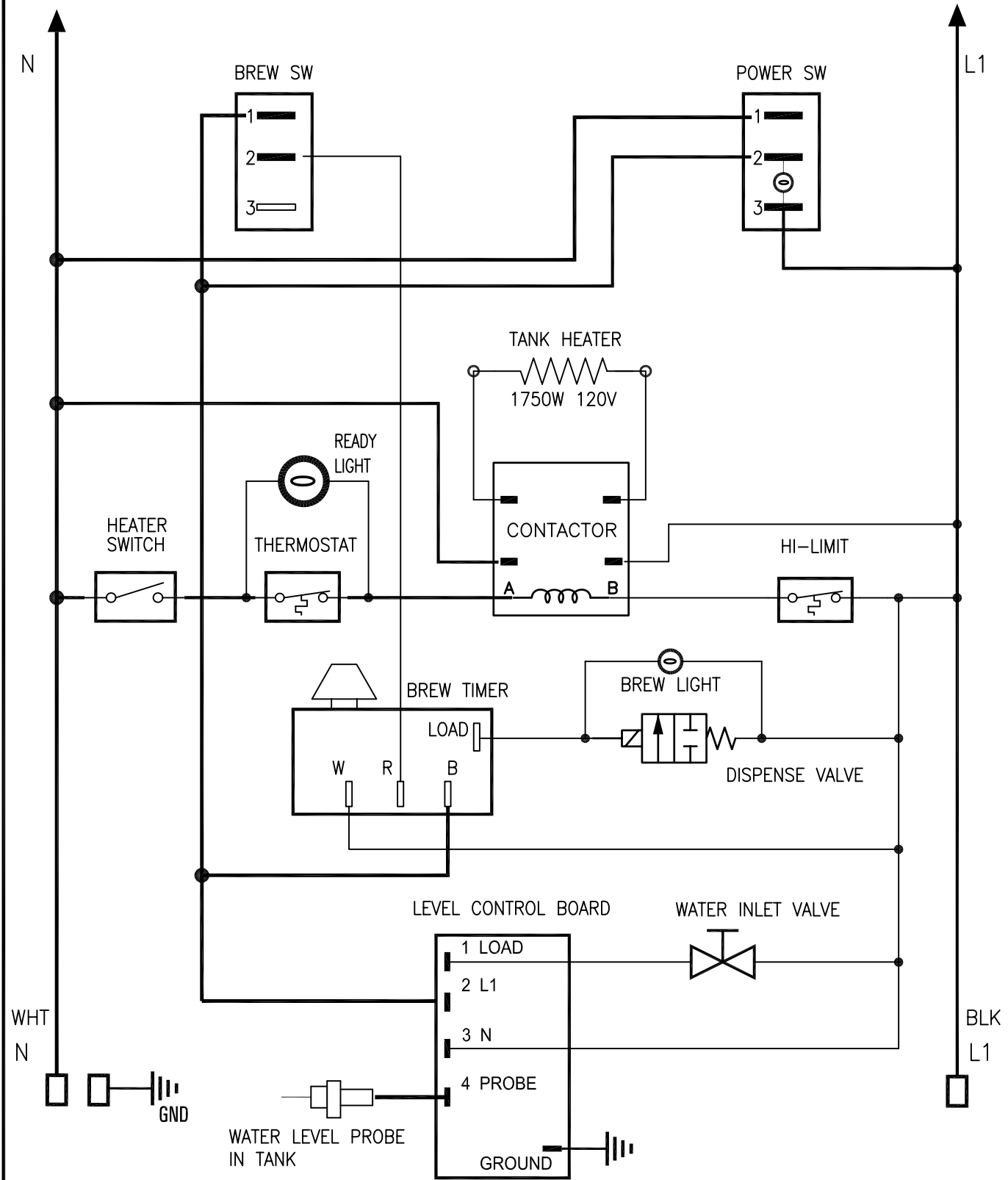


PARTS LIST - AIRPOT

PART #	DESCRIPTION	QTY			
		APT18 (120V)	APT18WT (120V)	APT18WT-X (220V)	APT100WT (120/240V)
32004	INDICATOR LIGHT, RED	1	1	1	3
B000A	TERMINAL BLOCK	0	0	0	1
B177A	CONTACTOR 120V	1	1	0	1
B178A	CONTACTOR 240V	0	0	1	0
C032A	CORD W/ PLUG (120V)	1	1	0	0
C072A	PILOT LIGHT, GREEN	1	1	1	0
C770Q	LINE CORD ASSY, 15 AMP 240V, NEMA 6-15P	0	0	1	0
CD318	VALVE INLET - 110V - .66GPM	1	1	0	1
CD319	VALVE INLET - 240V - .66GPM	0	0	1	0
CE202	LINE CORD, 4' L14-30P NEMA TWIST LOCK	0	0	0	1
D085A	FAUCET ASSEMBLY (WT MODELS ONLY)	0	1	1	1
E004A	SPRAY HEAD - BREWERS	1	1	1	2
G298A	ELEMENT 220V 2.4KW	0	0	1	2
G382A	ELEMENT 120V 1.8KW	1	1	0	0
K107A	SPRAY HEAD ADAPTER	1	1	1	2
K402Q	WATER LEVEL SENSOR	1	1	1	0
K491B	HOSE NUT ASSEMBLY	1	1	1	1
K525A	ELBOW 90 DEG	2	2	2	4
K544A	1/2" DRAIN TUBE	0	0	0	1
K695Q	DUAL LEVEL CONTROL PROBE	0	0	0	1
K671Q	SPRAY TUBE ASSEMBLY	1	1	1	2
L069A	HEATER SWITCH, TOGGLE	1	1	0	1
L155A	SWITCH RED ROCKER (POWER)	0	0	0	1
L217A	SWITCH, RED ROCKER NARROW (POWER)	1	1	1	0
L265A	TIMER, HOT WATER DISPENSER 120V (4 MIN)	1	1	0	2
L265E	TIMER, HOT WATER DISPENSER 240V (4 MIN)	0	0	1	0
L291A	SWITCH GREEN BREW 120V	0	0	0	2
L299A	HEATER SWITCH, TOGGLE	0	0	1	0
L467A	DISPENSE VALVE 120V	1	1	0	2
L566A	WATER LEVEL CONTROL 120V	1	1	0	0
L573A	HI LIMIT	1	1	1	1
L579A	SWITCH, BLACK - MOM (BREW)	1	1	1	0
L599A	WATER LEVEL CONTROL 240V	0	0	1	0
L676A	DISPENSE VALVE 220V	0	0	1	0
L681A	THERMOSTAT	1	1	1	1
L775A	WATER LEVEL CONTROL - DUAL 120V	0	0	0	1
L776A	WATER LEVEL CONTROL - DUAL 240V				
M008A	THERMOSTAT KNOB	1	1	1	1
M042A	LEGS (3/4" ADJ) (SET OF 4)	1	1	1	1
M326A	SILICONE TUBING 3/8 ID x 5/8 OD 2 FT	2	2	2	2
M391A	DRAIN PLUG	1	1	1	1
M461A	SILICONE SEAL 12mm	6	6	6	6
M462A	SEAL, SILICONE 15mm	0	0	0	1
M494A	SEAL, SILICONE 12mm PLUG	1	1	1	1
M500A	SILICONE TANK GASKET	0	0	0	1
M545A	SILICONE TUBING 3/16 ID x 1 FT LONG	1	1	1	1
M600A	SILICONE TANK GASKET	1	1	1	0
P465A	SCREW, 1/4-20 x 5/8 S.S.	2	2	2	2
RV33C	WATER TANK ASSEMBLY (REF)				
SI33C	WATER TANK ASSEMBLY (REF)				
U810A	GUARD BRACKET, HEATER SWITCH	1	1	1	0
V000A	BREW FUNNEL BLACK	1	1	1	2
V255Q	FUNNEL ASSEMBLY, ST.STEEL. (OPTIONAL)				

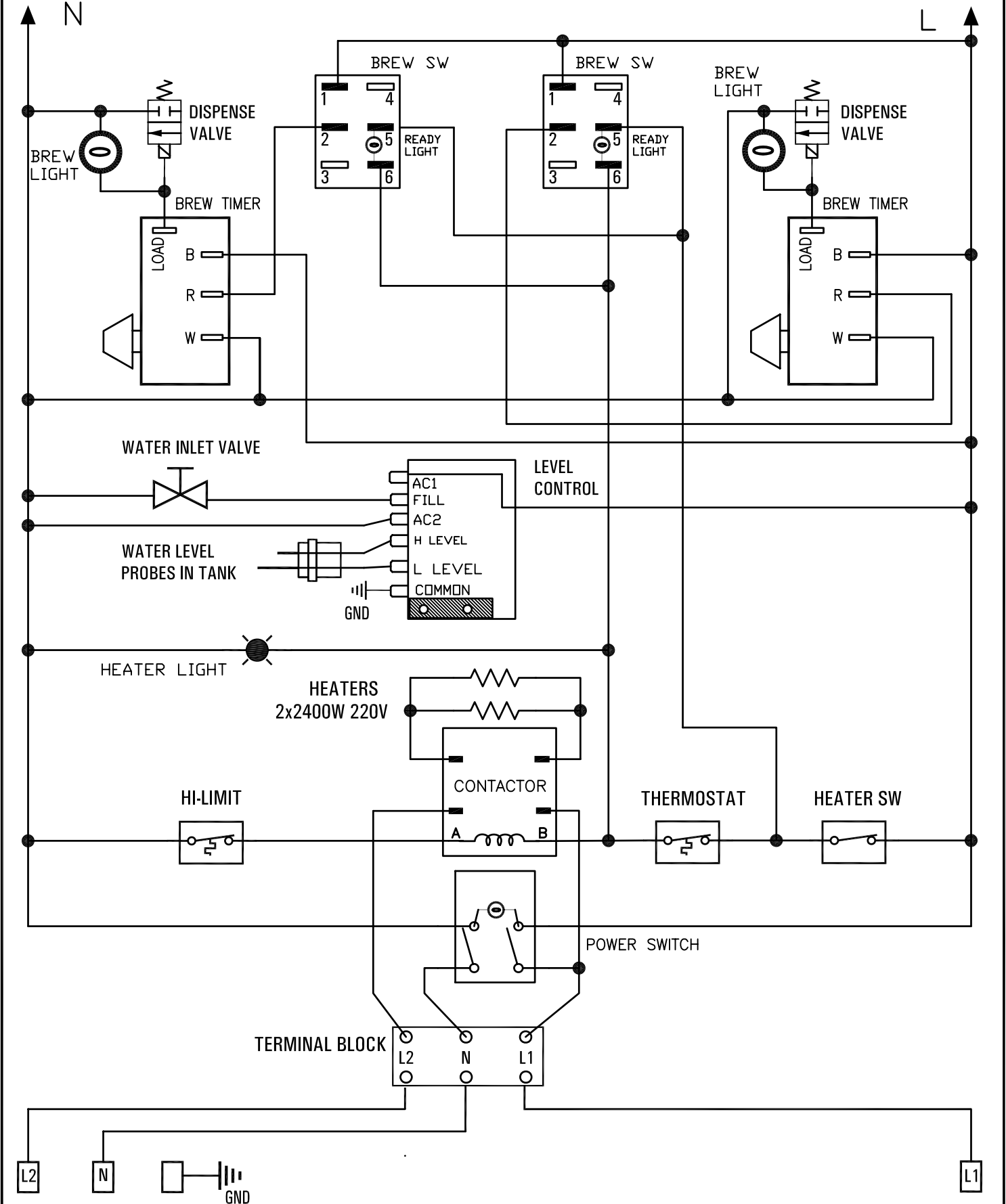
Airpot Brewer Wiring Diagram

APT18, APT18WT 1.75KW 120V 50/60HZ 1PH



Airpot Brewer Wiring Diagram

APT100WT 5.0KW 120/240V 50/60HZ 1PH



NE191

Free Manuals Download Website

<http://myh66.com>

<http://usermanuals.us>

<http://www.somanuals.com>

<http://www.4manuals.cc>

<http://www.manual-lib.com>

<http://www.404manual.com>

<http://www.luxmanual.com>

<http://aubethermostatmanual.com>

Golf course search by state

<http://golfingnear.com>

Email search by domain

<http://emailbydomain.com>

Auto manuals search

<http://auto.somanuals.com>

TV manuals search

<http://tv.somanuals.com>