

CREATIVE

WEBCAM

Notebook

User's Guide

User's Guide

Creative WebCam Notebook

Information in this document is subject to change without notice and does not represent a commitment on the part of Creative Technology Ltd. No part of this manual may be reproduced or transmitted in any form or by any means, electronic or mechanical, including photocopying and recording, for any purpose without the written permission of Creative Technology Ltd. The software described in this document is furnished under a license agreement and may be used or copied only in accordance with the terms of the license agreement. It is against the law to copy the software on any other medium except as specifically allowed in the license agreement. The licensee may make one copy of the software for backup purposes.

Copyright © 1998-2003 Creative Technology Ltd. All rights reserved.

Version 1.0

April 2003

Sound Blaster and Blaster are registered trademarks of Creative Technology Ltd. in the United States and/or other countries. Microsoft, MS-DOS, and Windows are registered trademarks of Microsoft Corporation. All rights reserved. All other products are trademarks or registered trademarks of their respective owners.

CREATIVE



Notebook

Contents

Contents

Introduction	
Before You Begin	i
Package Contents	i
README file	i
Minimum System Requirements	i
Document Conventions	ii
1	Installing Creative WebCam Notebook
About Creative WebCam Notebook	1-1
Installing Creative WebCam Notebook	1-2
In Windows 98 / 98SE / Me / 2000 / XP	1-2
2	Using PC-CAM Center
Starting PC-CAM Center	2-1
Capturing Images and Video	2-2
Taking a Photo	2-2
Recording a Video	2-2
Viewing a Photo	2-3
Viewing a Video	2-3
Reactivating the Camera	2-3
Starting PC-CAM Center Help	2-3
3	Creative WebCam Notebook Applications
Creative PC-Cam Center	3-1
Creative WebCam Monitor	3-1
Microsoft NetMeeting	3-1
Microsoft Internet Explorer	3-1

A	Technical Specifications	
B	Troubleshooting	
	Problems Using Creative WebCam Notebook	B-1
	Problems in Windows XP	B-2
C	Note on USB Compatibility	

CREATIVE



Notebook

Introduction

Introduction



Applications included on your Installation CD may vary depending on camera model and region of purchase.

Creative WebCam Notebook is a 24 bit, 16.7 million color digital video camera kit for your notebook, giving you everything you need to capture still images and full color video. Not only that, it also allows you to communicate face-to-face with others on the Internet!

Creative WebCam Notebook is bundled with the following software:

- Creative PC-Cam Center
- Creative WebCam Monitor
- Microsoft® NetMeeting
- Microsoft Internet Explorer

For more information, see "Creative WebCam Notebook Applications" on page 3-1.

Before You Begin

Package Contents

Your Creative WebCam Notebook package contains the following items:

- Creative WebCam Notebook with USB cable attached
- Creative WebCam Notebook installation CD
- Quick Start

README file

The README file on the CD-ROM contains information not available at the time of printing. Read the file before you begin installing Creative WebCam Notebook.

Minimum System Requirements

- 350 MHz Pentium® II or higher IBM® compatible notebook
- 128 MB RAM
- 350 MB free hard disk space (for installation of all software titles)
- Available USB port or USB hub with an external power supply
- Microsoft Windows 98/98SE, Windows Me, Windows 2000 or Windows XP
- AGP display adapter that supports 16 bit color at a resolution of 1024 x 768 pixels

- CD-ROM drive installed
- Sound Blaster[®] or other Windows-compatible audio card. Sound Blaster 16 or higher required for simultaneous two-way conversation with full-duplex support.

For Videoconferencing

- Microphone
- Modem or LAN access to the Internet at 28.8Kb or faster

Document
Conventions



Tip. This tells you about short cuts or hints relating to a feature.



Note. This highlights additional or important information about a feature.



Caution! This highlights proper usage of your product. Use this information to avoid risky situations.



Warning! This warns you of possible hazards to yourself or your product, that may result in injury or damage.

CREATIVE



1

Installing Creative WebCam Notebook

Installing Creative WebCam Notebook

This chapter tells you how to quickly install Creative WebCam Notebook.

About Creative WebCam Notebook

Figure 1-1 highlights the features of Creative WebCam Notebook.

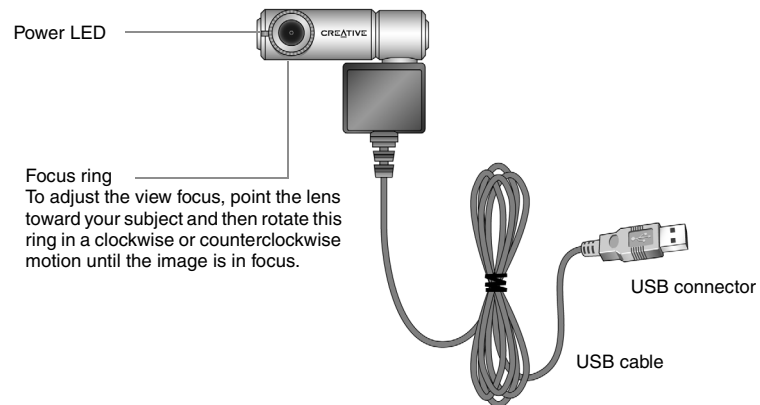


Figure 1-1: Creative WebCam Notebook

Installing Creative WebCam Notebook

In Windows 98 / 98SE / Me / 2000 / XP



- You can attach Creative WebCam Notebook to a USB hub with an external power supply.
- If you have a microphone, connect it to your external microphone connector. Read your notebook's documentation for more information.

Follow the installation procedures for your operating system.

1. Do not connect Creative WebCam Notebook to your notebook before installing the drivers. If you accidentally begin installation with Creative WebCam Notebook connected, the **Add New Hardware Wizard** or **Found New Hardware Wizard** dialog box appears. Click the **Cancel** button.
2. Insert the Creative WebCam Notebook CD into your CD-ROM drive. If it does not run automatically, click **Start-> Run** and type **D:\ctrun\ctrun.exe** (where D:\ represents your CD-ROM drive).
3. Click the options for installing drivers and applications.
4. Follow the instructions on the screen to complete the installation. You may be asked, after an application is installed, if you want to restart your notebook. Do not restart your notebook until all the drivers and applications are installed.
5. Connect the USB cable to an available USB port on your notebook (Figure 1-2).

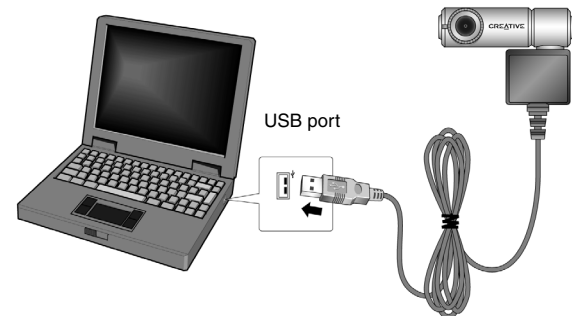


Figure 1-2: Connecting Creative WebCam Notebook to your notebook

6. Clip Creative WebCam Notebook on top of your notebook screen (Figure 1-3).

Follow the steps below that are for your operating system.

For Windows 98/98SE and Windows Me only

After connecting your camera, Windows automatically detects the device.

- i. If you are prompted to insert the Windows 98 CD, replace the Creative WebCam Notebook CD with the appropriate CD.
Note: Windows 98 is available in various editions. Be sure to use the correct edition for your system.
 - ii. In the **Insert Disk** dialog box, click the **OK** button.
 - iii. Follow the instructions on the screen.
7. Check the image in the **Video preview** pane of the **Creative WebCam Notebook Camera Configuration** dialog box.
If it flickers or displays a series of dark bands, click the **Cancel Flicker** button.
 8. Click the **Finish** button, and then restart your notebook if you are prompted to do so.

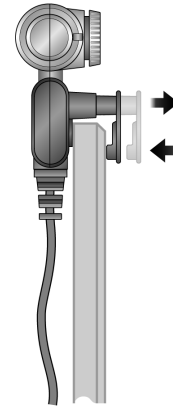


Figure 1-3: Clipping Creative WebCam Notebook to your notebook screen

For Windows 2000 only

9. When a **Digital Signature Not Found** dialog box appears (Figure 1-4), telling you that **Creative WebCam Notebook** has been detected, ignore the message and click the **Yes** button.
10. Check the image in the **Video preview** pane of the **Creative WebCam Notebook Camera Configuration** dialog box. If it flickers or displays a series of dark bands, click the **Cancel Flicker** button.
11. Click the **Finish** button, and then restart your notebook if you are prompted to do so.

For Windows XP only

After connecting your camera, Windows automatically detects the device.

12. When the **Found New Hardware Wizard** dialog box appears, select **Install the software automatically (Recommended)**, and then click the **Next** button.

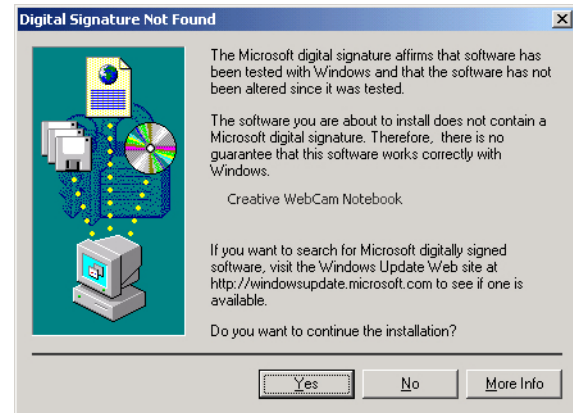


Figure 1-4: Digital Signature Not Found dialog box

13. When a **Hardware Installation** dialog box appears (Figure 1-5), ignore the message and click the **Continue Anyway** button. For more details on this warning message, see "Problems in Windows XP" on page B-3.
Installation will be complete in a while.
14. Check the image in the **Video preview** pane of the **Creative WebCam Notebook Camera Configuration** dialog box. If it flickers or displays a series of dark bands, click the **Cancel Flicker** button.
15. Click the **Finish** button, and then restart your notebook if you are prompted to do so.

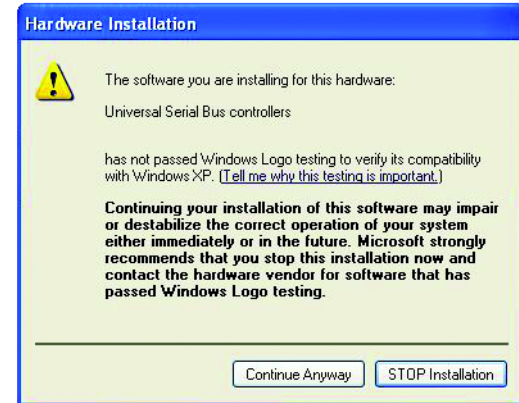


Figure 1-5: *Hardware Installation dialog box*

Verifying the installation in Windows 98/98SE and Windows Me

1. Right-click the **My Computer** icon on your desktop.
2. On the menu that appears, click **Properties**.
3. In the **System Properties** dialog box, click the **Device Manager** tab.
4. Click the plus (+) sign next to the **Imaging Device** icon. The entry "Creative WebCam Notebook" should appear.

Verifying the installation in Windows 2000 & XP

1. Right-click on **My Computer**.
2. On the menu that appears, click **Properties**.
3. In the **System Properties** dialog box, click the **Hardware** tab.
4. Click the **Device Manager** button. A window appears.
5. Click the plus (+) sign next to the **Imaging Device** icon. The entry "Creative WebCam Notebook" should appear.

CREATIVE



2

Using PC-CAM Center

Using PC-CAM Center

This chapter tells you how to quickly set up Creative WebCam Notebook as a Web Camera using Creative PC-CAM Center.

For detailed information about the application's features and settings, refer to its Help file. See "Starting PC-CAM Center Help" on page 2-3.


Starting PC-CAM Center



- If PC-CAM Center does not recognize the camera correctly, see Appendix B, "Troubleshooting".
- PC-CAM Center automatically detects your installed model of Creative WebCam, and disables any unsupported features in the user interface.

PC-CAM Center is an easily usable application that enables you to take photos and record videos with Creative WebCam Notebook. You can also view photos and videos, and create and manage albums.

You can start PC-CAM Center in any of the following ways:

- Click **Start -> Programs -> Creative -> Creative WebCam -> Creative PC-CAM Center**.
- Double-click the Creative Cam Detector icon  in your taskbar. This icon appears if, during installation, you clicked the option for Creative Cam Detector to launch automatically at Windows startup.
- Plug your camera into the USB port and let Windows auto-detect it.

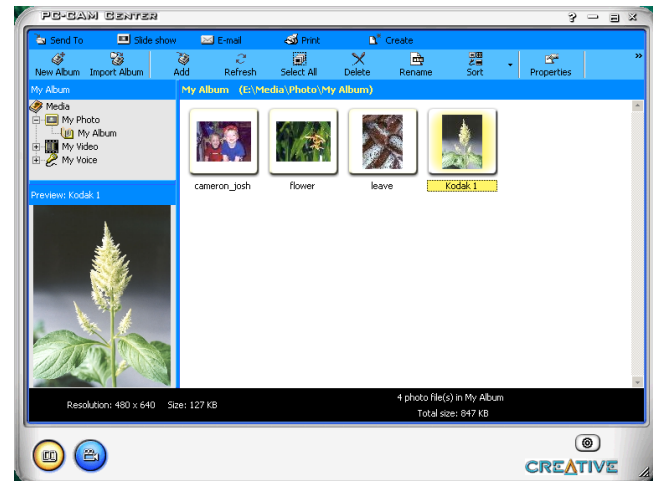


Figure 2-1: PC-CAM Center screen.

Capturing Images and Video

Taking a Photo



The **Save automatically** check box is selected, by default.

With PC-CAM Center, you can take photos and record videos.

For more instructions on how to take a photo or record a video, refer to the PC-CAM Center Help file. To launch PC-CAM Center Help, See “Starting PC-CAM Center Help” on page 2-3.

1. In the **PC-CAM Center** window, click the **Live Video** button. The current camera view is displayed in the **Viewing** window.
2. In the **Save Photo in** box, select an album to put your photos in.
If you want captured images to be saved automatically, be sure that the **Save automatically** check box is selected. Otherwise, click the check box to clear it.
3. Click the **Snap Photo** button at the bottom of the window.
A preview of the saved photo is shown at the bottom-left corner of the **Live Video** window. The photo is added to your selected album.
If the **Save automatically** check box is not selected, click the **Save** button to save the image. Otherwise the photo is not saved or added to your selected album.

Recording a Video

1. In the **PC-CAM Center** window, click the **Live Video** button. The current camera view is displayed in the **Viewing** window.
2. In the **Video Size** box, select a suitable resolution.
3. In the **Save Video in** box, select an album to put your videos in.
If you want captured video to be saved automatically, click the **Save automatically** check box. Otherwise, click the check box again to clear it.
4. Click the **Capture video** button to start recording.
The button starts blinking to indicate that recording is in progress.
5. To stop the recording, click the button again.
The button stops blinking. The video is added to your selected album.
If the **Save automatically** check box is not selected, click the **Save** button to save the video. Otherwise the video is not saved or added to your selected album.
6. To preview the video, click the **Play** button on the bottom-left corner of the **Preview** window.

Viewing a Photo

1. Click the **My Album** button. PC-CAM Center is now in **My Album** mode.
2. In the **My Album** box, click the **My Photo** folder and then click the album that contains the photos that you want to view.
Thumbnails of photos in the album are displayed in the **Thumbnails** window.
3. Double-click the thumbnail of the photo displayed in the **Thumbnails** window.
The photo, in its actual size, is displayed in the PC-CAM Center **Viewing** window.
If you are not satisfied with the result, you can select a higher resolution, and then capture the image again.

Viewing a Video

1. Click the **My Album** button. PC-CAM Center is now in **My Album** mode.
2. In the **My Album** box, click the **My Video** folder and then click the album that contains the video that you want to view.
Thumbnails of videos in the album are displayed in the **Thumbnails** window.
3. Double-click the thumbnail of the video you want to view.
The video plays in the **Viewing** window.
If you are not satisfied with the result, you can select a higher resolution, and then capture the video again.

Reactivating the Camera

If your computer goes into standby mode, your camera will go into suspend mode. You can reactivate the camera and computer by moving the mouse or pressing a key on the keyboard.

Starting PC-CAM Center Help

This Help file contains instructions on how to use PC-CAM Center to take photos and record videos. It also teaches you how to optimize settings to take high quality photos and videos.

To start the Help file:

1. Click the PC-Cam Center logo at the top left corner of PC-CAM Center's main window.
2. On the **PC-CAM Center** menu, click **Help**.

CREATIVE



3

Creative WebCam Notebook Applications

Creative WebCam Notebook Applications

The Creative WebCam Notebook application CD includes the following:

- Creative PC-Cam Center
- Creative WebCam Monitor
- Microsoft NetMeeting
- Microsoft Internet Explorer

Creative PC-Cam Center

This powerful application lets you take pictures or record videos and store them in albums. You can also export pictures or videos to other programs, or send them as attachments in your e-mail message. There are various settings for you to adjust, allowing you to optimize the quality of your pictures and videos. For details, see "Using PC-CAM Center" on page 2-1.

Creative WebCam Monitor

Want to put a live snapshot of your office, coffee pot, or even your fishtank on your web page? Creative WebCam Monitor is the application to look at. Just point your camera at your subject and pick a time interval. WebCam Monitor does the rest, including uploading the snapshots to the Internet. WebCam Monitor also acts as a motion-detecting security system which automatically e-mails you when somebody comes near your PC while you are not present.

Microsoft NetMeeting

Microsoft NetMeeting is a voice communications client that includes support for international conferencing standards. It also provides true multi-user application sharing and data conferencing capabilities.

With its one-way or two-way video-conferencing features, your friends can see you even if they do not have a camera. Audio-only conversations and text chats are also supported. Two or more users can collaborate on a document, doodle on a whiteboard, or even share any Windows application in real-time over the Internet or on a corporate intranet.

Microsoft Internet Explorer

Microsoft Internet Explorer is an Internet browser that features ActiveX technology, so web pages can combine interactive ActiveX Controls, Java applets, and more, to create interactive content. ActiveMovie technology allows you to view multimedia content on the web, including MPEG audio and video.

CREATIVE



A

Technical Specifications

Technical Specifications

- | | |
|-------------------------|---|
| Construction | <input type="checkbox"/> USB Port version: Remote camera head with a USB cable |
| Power | <input type="checkbox"/> From a USB port or USB hub with an external power source |
| Sensor | <input type="checkbox"/> CMOS image sensor |
| Resolution - Video mode | <input type="checkbox"/> All resolutions up to 640 x 480 |
| Resolution - Still mode | <input type="checkbox"/> All resolutions up to 640 x 480 |
| Video formats | <input type="checkbox"/> RGB 24
<input type="checkbox"/> I 420 |
| Exposure control | <input type="checkbox"/> Automatic |
| Colour balance | <input type="checkbox"/> Automatic |
| Colour matrix | <input type="checkbox"/> Preset and integral to camera |
| Field-of-view | <input type="checkbox"/> 44 degrees +/- 5% (horizontal) |
| Depth-of-field | <input type="checkbox"/> 15 centimeters or 6 inches to infinity |

Port compatibility

- Universal Serial Bus port

Software compatibility

- TWAIN, Video for Windows, WDM MiniDriver for DirectShow, and Still Image driver that runs in Windows 98/98SE, Windows 2000, Windows Me and Windows XP

CREATIVE



B

Troubleshooting

Troubleshooting

If you have a technical problem with this product, you may wish to consult our self-help tool “Knowledgebase” for online troubleshooting and solutions. Go to www.creative.com and select your region.

Problems Using Creative WebCam Notebook

An application reports that the video driver is already in use, or that the camera cannot be found.

Do the following:

- The camera is not properly connected. To resolve this problem, ensure that the camera’s USB connector is inserted, and that the USB connector is enabled in the BIOS. Refer to your notebook’s documentation for information on the BIOS.
- Reinstall the video capture drivers and restart your notebook.

The camera’s Power LED does not light up, or in Windows 98/98 SE, Me and 2000, the computer restarts for no apparent reason.

You may have USB devices drawing too much power from your computer. This can happen especially when connecting USB devices to a passive or bus-powered USB hub. In Windows XP, a dialog box similar to Figure B-1 appears.

Do the following:

- Connect the camera directly to your computer’s USB port.
- Use a USB hub with an external power supply.

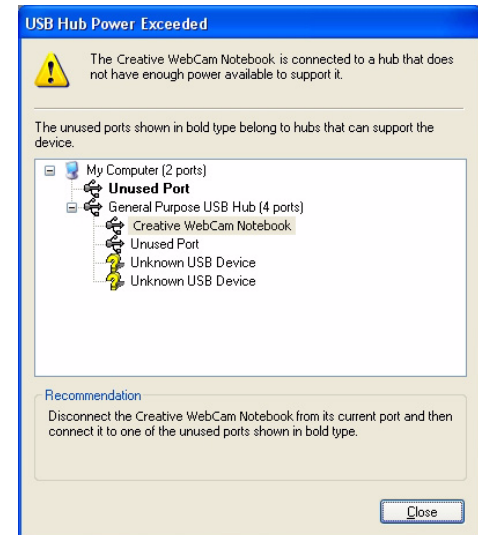


Figure B-1: USB Hub Power Exceeded dialog box

Insufficient system resources reserved for the USB port, causing the system to be unable to function.

There are too many devices in the system, causing IRQ problems with the system's USB controller.

Do the following:

1. Remove some devices from the system.
2. Restart the system.
The system will rearrange the resources automatically.

Problems in Windows XP

A Hardware Installation error message appears on a Windows XP operating system when applications are being installed.

At the time of this product's release, Microsoft strongly encouraged companies to submit their hardware solutions for certification. If a hardware device driver is not submitted, or does not qualify, for Microsoft certification, a warning message similar to the one below appears.



You may see this message when installing a driver. If you do, you may choose to click the **Continue Anyway** button. Creative has tested the driver on Windows XP, and it does not impair or destabilize your computer.

CREATIVE



C

Note on USB Compatibility

Note on USB Compatibility



To look for a USB compatible product, you can visit the product search page at the official USB Web site: <http://www.usb.org/app/search/products>.

While testing Creative WebCam Notebook on motherboards with integrated Universal Serial Bus (USB) ports, we encountered a small number of motherboards that do not meet the USB specification exactly. These and other non-USB-compliant motherboards may not operate correctly with Creative WebCam Notebook. Fortunately, the manufacturers of some of these motherboards have released new versions of motherboards or BIOS to address the problem.

If the setup program warns you that your motherboard's USB port is incompatible with Creative WebCam Notebook, or if the camera does not work on your system and you suspect that the problem may be related to your computer's USB port, the following is a list of available options:

1. Contact your computer vendor.
Your computer vendor may be able to upgrade your motherboard or its BIOS to a newer version that addresses USB incompatibilities.
2. Use a PCI host adapter that provides USB connectors.
If you are not able to upgrade your motherboard or its BIOS, we recommend this approach.
3. Attach the Creative WebCam Notebook to a USB hub with an external power supply.
Some USB devices (such as monitors) also operate as USB hubs; you can also buy USB hubs which are to be attached to your computer's USB port. However, in some cases, attaching a USB hub to a non-USB-compliant USB motherboard connector will not solve the problem.

Free Manuals Download Website

<http://myh66.com>

<http://usermanuals.us>

<http://www.somanuals.com>

<http://www.4manuals.cc>

<http://www.manual-lib.com>

<http://www.404manual.com>

<http://www.luxmanual.com>

<http://aubethermostatmanual.com>

Golf course search by state

<http://golfingnear.com>

Email search by domain

<http://emailbydomain.com>

Auto manuals search

<http://auto.somanuals.com>

TV manuals search

<http://tv.somanuals.com>