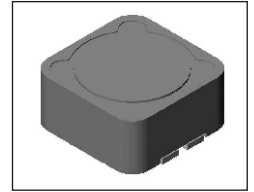


SMT Power Inductor

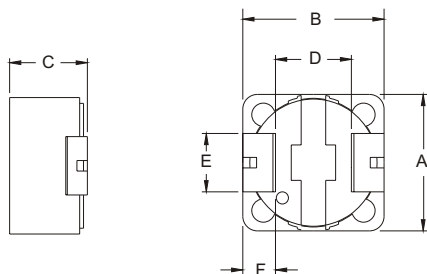
SIQ1250R Type

Features

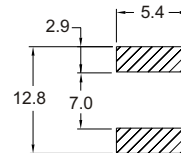
- RoHS compliant.
- High current (8.0A, 3.5uH) SMD type.
- Magnetically shielded, suitable for high density mounting.
- High energy storage and low DCR.
- Provided with embossed carrier tape packing.
- Ideal for power source circuits, DC-DC converter, DC-AC inverters inductor applications.
- In addition to the standard versions shown here, customized inductors are available to meet your exact requirements.



Mechanical Dimension :



RECOMMENDED PAD PATTERNS



UNIT:mm/inch

A = 12.2 ± 0.3 / 0.480 ± 0.012

B = 12.2 ± 0.3 / 0.480 ± 0.012

C = 5.0 / 0.197 Max.

D = 7.6 ± 0.3 / 0.299 ± 0.012

E = 5.0 / 0.197

F = 2.2 / 0.087

Electrical Characteristics: 25°C, 100KHz, 0.1V

PART NO.	L ¹ (uH)	DCR (mΩ) MAX	I _{rated} ² (A dc)
SIQ1250R - 3R5	3.5	13	8.0
SIQ1250R - 4R4	4.4	16	7.4
SIQ1250R - 5R6	5.6	19	6.8
SIQ1250RA - 5R6	5.6	21	7.0
SIQ1250R - 6R8	6.8	23	6.2
SIQ1250R - 8R2	8.2	27	5.5
SIQ1250R - 100	10.0	30	5.0
SIQ1250R - 181	180.0	290	1.0
SIQ1250R - 271	270.0	460	1.0

1. Tolerance of inductance : ± 20%.
2. I_{rated} is the DC current which cause the inductance drop less than 25% of its nominal inductance without current and the surface temperature of the part increase less than 45°C.
3. Operating temperature: -20°C to 105°C (including self-temperature rise).



DELTA ELECTRONICS, INC.

(TAOYUAN PLANT CPBG) 252, SAN YING ROAD, KUEISAN INDUSTRIAL ZONE, TAOYUAN SHIEN, 333, TAIWAN, R.O.C.

TEL: 886-3-3591968; FAX: 886-3-3591991

<http://www.deltawww.com>

Free Manuals Download Website

<http://myh66.com>

<http://usermanuals.us>

<http://www.somanuals.com>

<http://www.4manuals.cc>

<http://www.manual-lib.com>

<http://www.404manual.com>

<http://www.luxmanual.com>

<http://aubethermostatmanual.com>

Golf course search by state

<http://golfingnear.com>

Email search by domain

<http://emailbydomain.com>

Auto manuals search

<http://auto.somanuals.com>

TV manuals search

<http://tv.somanuals.com>