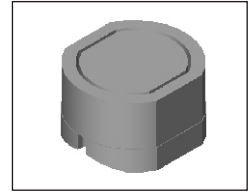


SMT Power Inductor

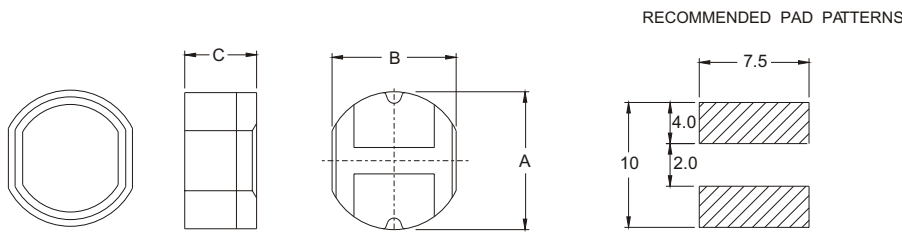
SIR85 Type

Features

- RoHS compliant.
- Low profile (4.9mm max. Height) SMD type.
- Magnetically shielded, suitable for high density mounting.
- Self-leads, suitable for high density mounting.
- High energy storage and low DCR.
- Provided with embossed carrier tape packing.
- Ideal for power source circuits, DC-DC converter, DC-AC inverters inductor applications.
- In addition to the standard versions shown here, customized inductors are available to meet your exact requirements.



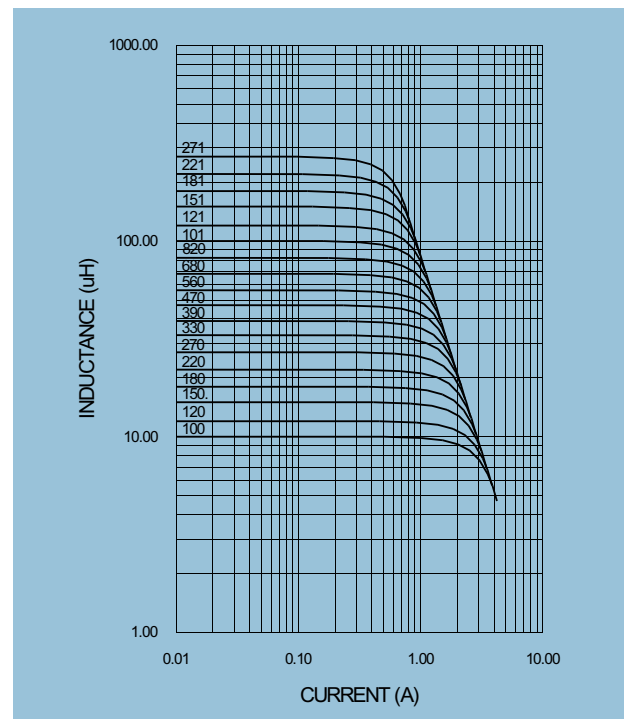
Mechanical Dimension:



UNIT:mm/inch
 A = 7.8±0.35 / 0.307± 0.014
 B = 7.0±0.35 / 0.276± 0.014
 C = 4.5±0.4 / 0.177± 0.016

Electrical Characteristics: 25°C, 100KHz, 0.1V

PART NO.	L ¹ (uH)	DCR (Ω) MAX	I _{rated} ² (Adc)
SIR85 - 100	10	0.070	1.65
SIR85 - 120	12	0.070	1.57
SIR85 - 150	15	0.080	1.39
SIR85 - 180	18	0.100	1.29
SIR85 - 220	22	0.130	1.12
SIR85 - 270	27	0.160	1.06
SIR85 - 330	33	0.180	0.97
SIR85 - 390	39	0.180	0.91
SIR85 - 470	47	0.270	0.80
SIR85 - 560	56	0.290	0.76
SIR85 - 680	68	0.330	0.68
SIR85 - 820	82	0.430	0.62
SIR85 - 101	100	0.490	0.55
SIR85 - 121	120	0.680	0.49
SIR85 - 151	150	0.940	0.44
SIR85 - 181	180	1.000	0.40
SIR85 - 221	220	1.180	0.36
SIR85 - 271	270	1.300	0.33



1. Tolerance of inductance: ±20% for 10~27uH, ±15% for 33~82uH, ±10% for 100~270.
2. I_{rated} is the DC current which cause the inductance drop 10% typical of its nominal inductance without current and the surface temperature of the part increase less than 45°C.
3. Operating temperature : -20°C to 105°C (including self-temperature rise).



DELTA ELECTRONICS, INC.

(TAOYUAN PLANT CPBG) 252, SAN YING ROAD, KUEISAN INDUSTRIAL ZONE, TAOYUAN SHIEN, 333, TAIWAN, R.O.C.

TEL: 886-3-3591968; FAX: 886-3-3591991

<http://www.deltawww.com>

Free Manuals Download Website

<http://myh66.com>

<http://usermanuals.us>

<http://www.somanuals.com>

<http://www.4manuals.cc>

<http://www.manual-lib.com>

<http://www.404manual.com>

<http://www.luxmanual.com>

<http://aubethermostatmanual.com>

Golf course search by state

<http://golfingnear.com>

Email search by domain

<http://emailbydomain.com>

Auto manuals search

<http://auto.somanuals.com>

TV manuals search

<http://tv.somanuals.com>