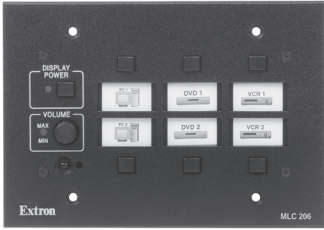


# Setup Guide — MLC 206

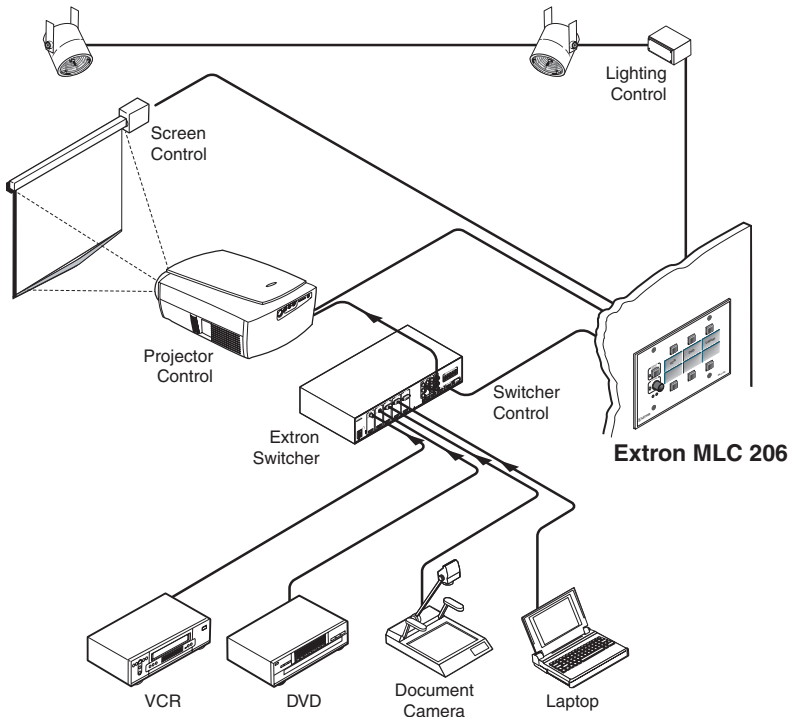


**IMPORTANT:**  
Refer to [www.extron.com](http://www.extron.com) for the complete user manual and installation instructions before connecting the product to the power source.

The Extron MediaLink™ Controller (MLC 206) provides infrared (IR) and RS-232 remote control of a display device, contact closure control of items in a room, tally outputs, and MediaLink Switcher control.

This guide provides instructions for an experienced installer to set up and operate the MLC 206 MediaLink Controller.

When possible in the following pages, line drawings are used to clarify steps discussed in the text.



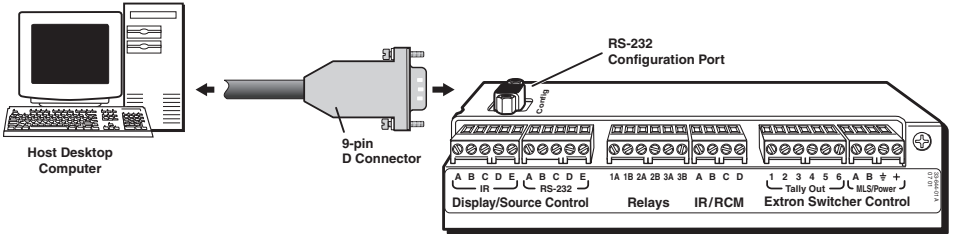
**MLC 206 typical application diagram**

# MLC 206 Setup Guide, cont'd

## Step 1 — Computer Connection

The MLC 206 must be connected to a PC in order to configure the controller. The configuration port, shown in the rear panel view below, is used for system control and for loading configuration and driver files into the MLC.

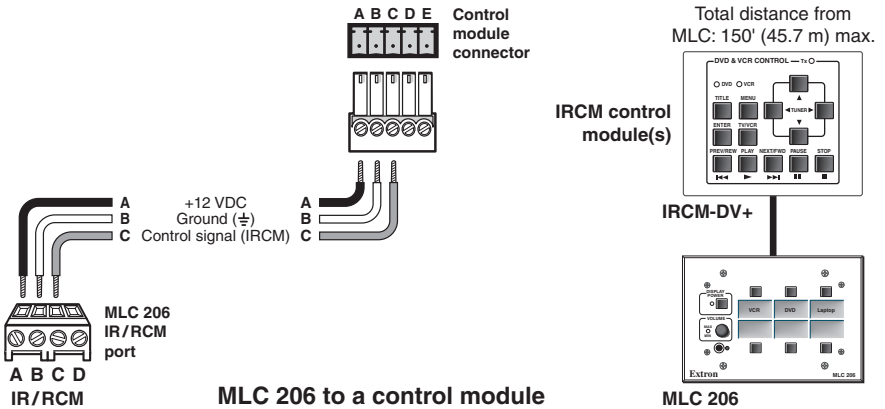
1. Connect a host computer to the MLC 206 Config port via the rear panel 9-pin HD female RS-232 connector. Use a serial cable with 9-pin D connectors.



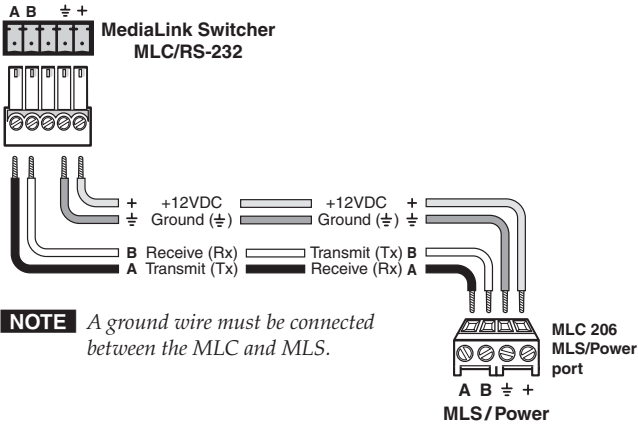
2. Connect all control modules that will be used in the system.

**NOTE**

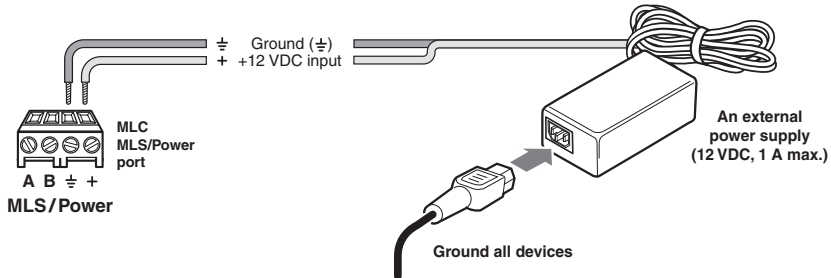
Control modules must be connected at this time so they can be configured with the software. Connections for IR and serial control can be installed after configuration.



- To power the MLC, connect a 12 VDC power supply or an optional MediaLink Switcher (MLS) to the MLS/Power port, and connect the power supply or the switcher to a power source.



### MLC 206 powered by a MediaLink Switcher



### Connecting an MLC 206 to an external power supply

## Step 2 — Software Installation

The MLC must be configured before it can send commands to the projector or other devices. Install the MediaLink Control Program software on the host PC. To install the software, run SETUP.EXE from the Extron-provided disk. Follow the instructions that appear on the screen.

**NOTE** The software is also available at [www.extron.com](http://www.extron.com).

# MLC 206 Setup Guide, cont'd

## Step 3 — Setting up projector control

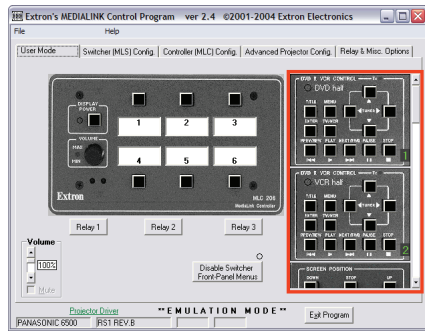
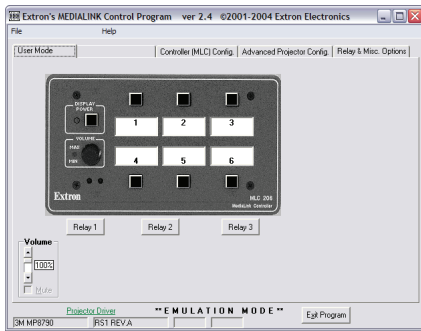
Device drivers allow the MLC 206 to control projectors and other source devices via RS-232 or IR.

**NOTE** *It is strongly recommended that an RS-232 control (filenameRS1.mll) file for controlling a projector be used whenever possible.*

To load a driver and configure the MLC 206:

1. Start the MediaLink Control Program.

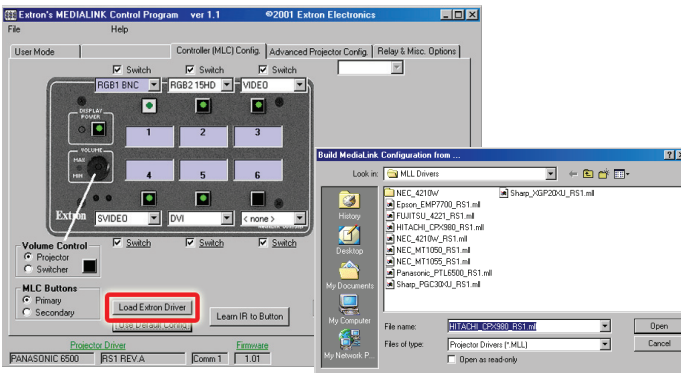
The appearance of the screens varies depending on which accessories (control modules and/or MediaLink Switcher) are connected to the MLC, as shown in the following pictures.



**MLC 206 without accessories**

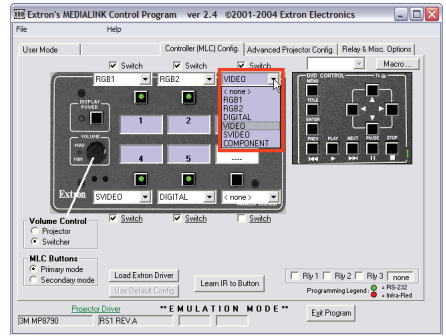
**MLC 206 with an MLS switcher, IRCM-DV+, and RCM-SC connected**

2. Load a projector driver: select the third tab, **Controller (MLC) Config**, and select the **Load Extron Driver** button, as shown in the following illustration.



Choose the appropriate projector driver (*filename.mll*) from the on-screen menu. If the projector brand and model are not listed, check the Extron Web site to see if a new driver is available or enter user-defined RS-232 strings. See "Advanced Projector Config" in chapter 4 of the *User's Manual* for details.

- Configure the buttons. Use the drop-down box associated with each button to select the command to be issued or function to perform, as shown at right.

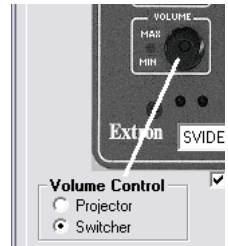


Each configured button has a green or red dot on it.



- NOTE** *If a button has been previously configured, it will have a red (IR) or green (RS-232) dot to indicate that an IR or RS-232 code has been associated with it.*

- Choose a volume control option. Select **Projector** if planning to use the projector display speakers or if using the projector display as a preamp. Select **Switcher (MLS)** when using an external switcher as an audio preamp or amplifier.



## Step 4 — IR learning

If there are no drivers available, the MLC can learn IR commands to control projectors or other devices. IR learning is required to configure control modules to control devices such as DVD players.

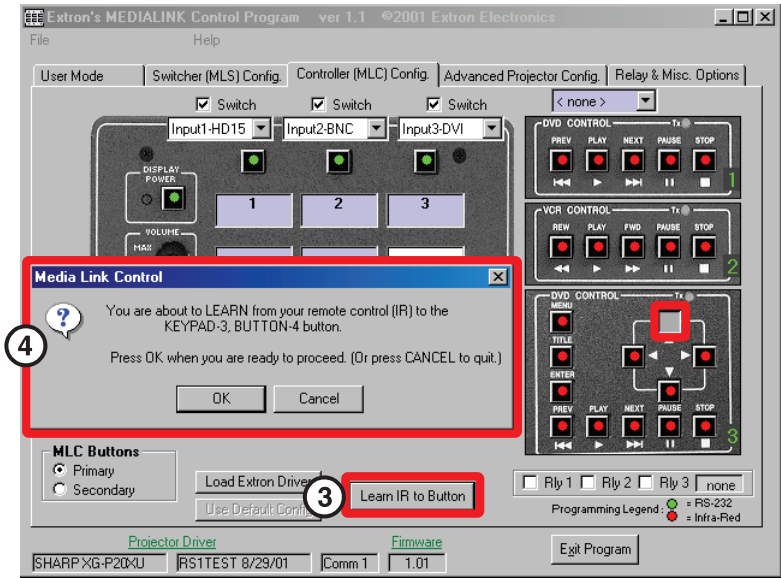
- Select the third tab, **Controller (MLC) Config**.
- Click on the appropriate button on the control module or the MLC to learn IR codes.



- NOTE** *If a button has been previously configured, it will have a red (IR) or green (RS-232) dot to indicate that an IR or RS-232 code has been associated with it.*

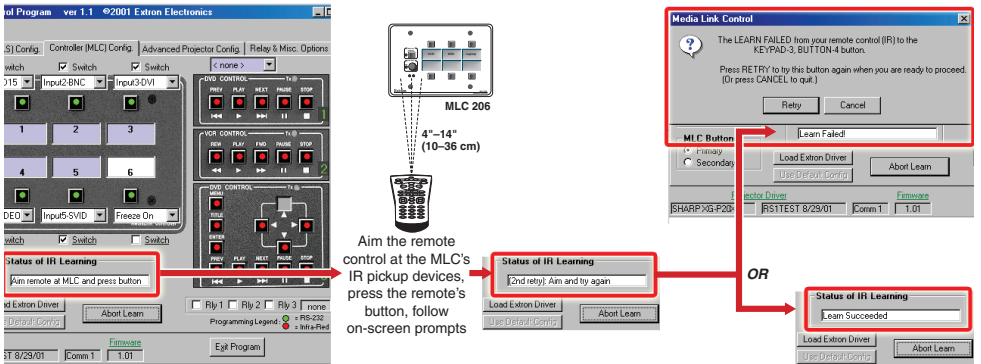
# MLC 206 Setup Guide, cont'd

- Click on the button labeled **Learn IR to Button**. A dialog box appears indicating the button to which IR codes will be learned.



- Click on **OK** to begin the learning process.

During IR learning hold the device remote control **4 inches to 14 inches (10 cm to 36 cm)** away from and directly in front of the MLC's IR pickup device.

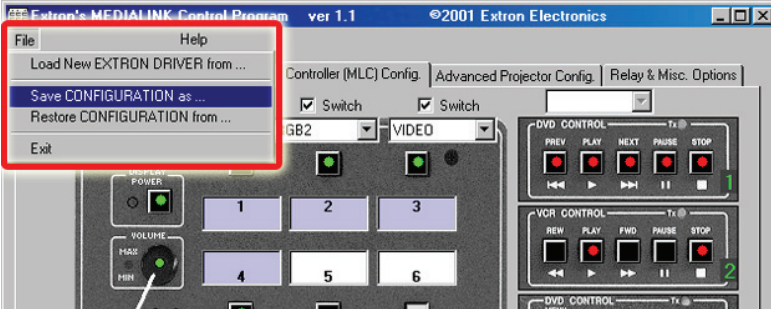


Once the IR commands have been successfully learned, the button will be shown with a **red dot** (shown at right) and the button/function may be named.

- Repeat steps 2 through 4 to set up additional buttons.

## Step 5 — Completing the installation

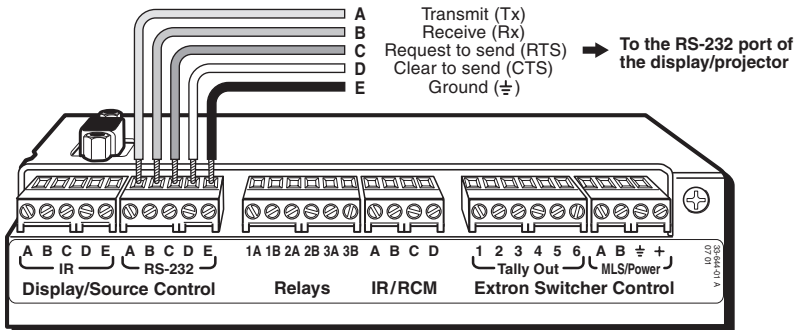
1. Save the configuration by selecting **Save CONFIGURATION as...**, and name it appropriately.



2. Connect the MLC 206 to the projector for RS-232 projector control.
  - a. Disconnect the power from the MLC (and the optional MediaLink Switcher, if applicable) and from the projector.
  - b. Plug the 9-pin D connector of the RS-232 projector control cable (such as an Extron UC 50' cable) into the projector RS-232 port. A cable adapter may be required.
  - c. Connect the other end of the projector control cable to the MLC Display/Source Control RS-232 port. Wiring depends on the projector. See the diagrams below and on page 8, and the pin assignments in the projector user manual. Also see the display driver setup document available from the download page of the Extron Web site.

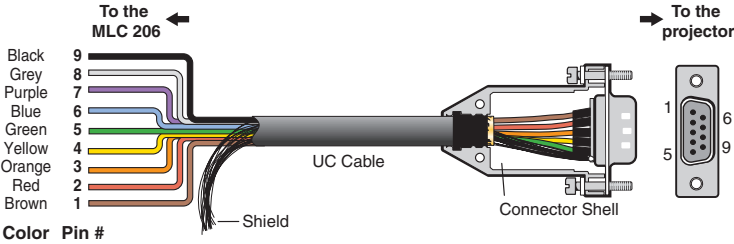
### NOTE

*In most cases only the transmit (Tx), receive (Rx) and ground connections will be needed. Wiring varies depending on the projector model.*



# MLC 206 Setup Guide, cont'd

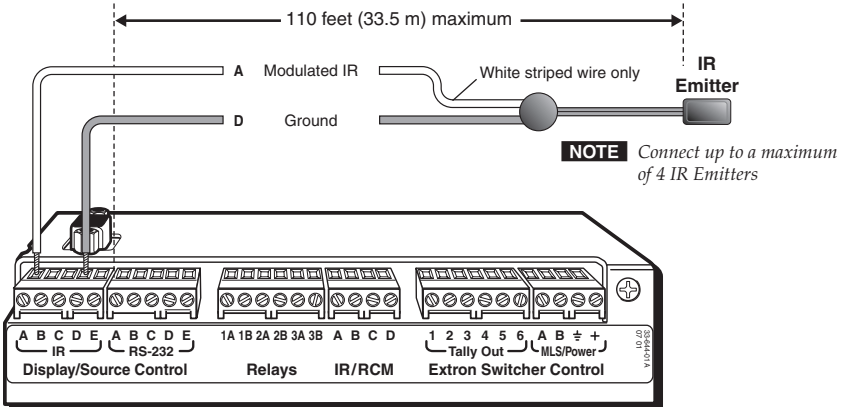
The UC cable pin assignments are shown in the following illustration.



## UC 50', 100' Cable Color Codes

3. Install the IR Emitter(s) in the IR port as shown in the following illustration, and attach the head of each IR Emitter to an IR-controlled device (VCR, DVD player, projector).

**NOTE** Place the IR emitter directly over the IR pickup device of the equipment.



4. Install any optional accessories (IR Link, relays, tally out) that will be connected to the MLC 206. Refer to chapter two of the *MLC 206 User's Manual* and to the accessory manual(s) for wiring diagrams and installation details.
5. Reconnect the power supply or optional MediaLink Switcher (MLS) to the MLS/Power port and connect power to all controlled devices.
6. Verify the system operates correctly when selections and adjustments are made at the front panel and/or from the **User Mode** section of the control software. Adjust cabling or retry IR learning as needed.
7. Disconnect the host PC from the MLC 206, remove power from the MLC (unplug the power supply or switcher), and label the inputs (see the *MLC 206 User's Manual* for details).
8. Mount the MLC and accessories into the wall or furniture, and restore power.

<b>Extron USA - West</b> Headquarters +800.633.9876 <small>Inside USA / Canada Only</small> +1.714.491.1500 +1.714.491.1917 FAX	<b>Extron USA - East</b> +800.633.9876 <small>Inside USA / Canada Only</small> +1.919.863.1794 +1.919.863.1797 FAX	<b>Extron Europe</b> +800.3987.6673 <small>Inside Europe Only</small> +31.33.453.4040 +31.33.453.4050 FAX	<b>Extron Asia</b> +800.7339.8766 <small>Inside Asia Only</small> +65.6383.4400 +65.6383.4664 FAX	<b>Extron Japan</b> +81.3.3511.7655 +81.3.3511.7656 FAX	<b>Extron China</b> +400.883.1568 <small>Inside China Only</small> +86.21.3760.1568 +86.21.3760.1566 FAX	<b>Extron Middle East</b> +971.4.2991800 +971.4.2991880 FAX
--	--	---	---	---	--	---



## Free Manuals Download Website

<http://myh66.com>

<http://usermanuals.us>

<http://www.somanuals.com>

<http://www.4manuals.cc>

<http://www.manual-lib.com>

<http://www.404manual.com>

<http://www.luxmanual.com>

<http://aubethermostatmanual.com>

Golf course search by state

<http://golfingnear.com>

Email search by domain

<http://emailbydomain.com>

Auto manuals search

<http://auto.somanuals.com>

TV manuals search

<http://tv.somanuals.com>