

INSTRUCTIONS-PARTS LIST



Husky 515

308666

55-Gallon Dispenser Package

Rev. C



This manual contains important warnings and information.
READ AND KEEP FOR REFERENCE.

INSTRUCTIONS

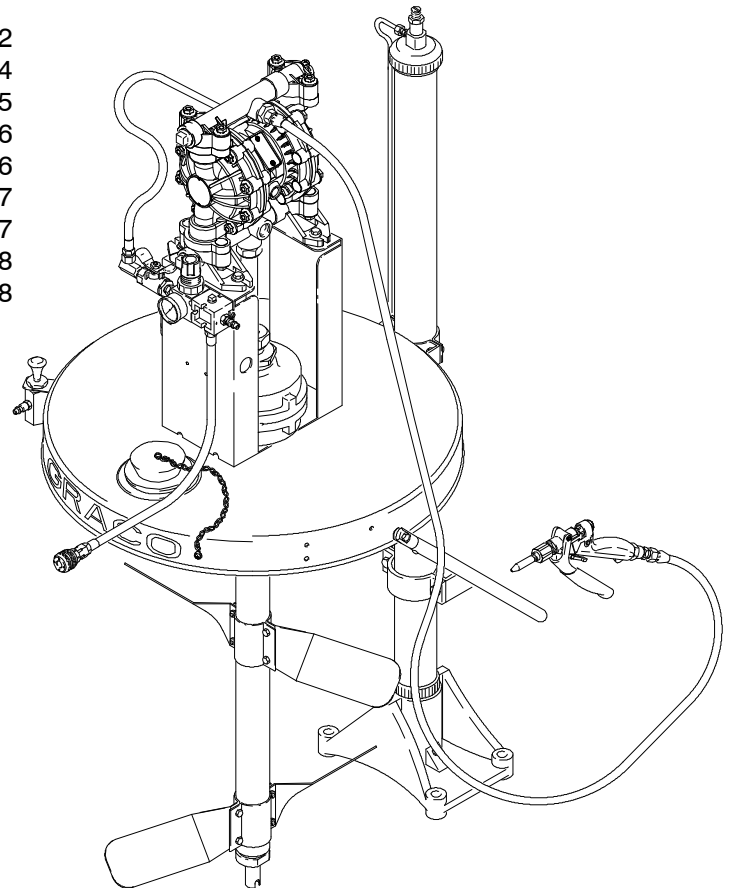
100 psi (6.9 bar) Maximum Air Input Pressure

Model 231418, Series B
Dispense Package with Gun

Model 231419, Series B
Dispense Package

Table of Contents

Warnings	2
Parts Drawings	4
Parts Lists	5
Installation	6
Operation	6
Service and Technical Data	7
Dimensional Drawing	7
Warranty	8
Graco Phone Number	8



9294A

Model 231418 shown

Symbols

Warning Symbol



This symbol alerts you to the possibility of serious injury or death if you do not follow the instructions.

Caution Symbol



This symbol alerts you to the possibility of damage to or destruction of equipment if you do not follow the instructions.

WARNING



INSTRUCTIONS

EQUIPMENT MISUSE HAZARD

Equipment misuse can cause the equipment to rupture or malfunction and result in serious injury.

- This equipment is for professional use only.
- Read all instruction manuals, tags, and labels before operating the equipment.
- Use the equipment only for its intended purpose. If you are not sure, call your Graco distributor.
- Do not alter or modify this equipment.
- Check equipment daily. Repair or replace worn or damaged parts immediately.
- Do not exceed the maximum working pressure of the lowest rated component in your system. This equipment has a **100 psi (7 bar) maximum working pressure**.
- Use fluids and solvents that are compatible with the equipment wetted parts. Refer to the **Technical Data** section of all equipment manuals. Read the fluid and solvent manufacturer's warnings.
- Always wear protective eyewear, gloves, clothing, and respirator as recommended by the fluid and solvent manufacturer.
- Comply with all applicable local, state, and national fire, electrical, and safety regulations.
- Route hoses away from traffic areas, sharp edges, moving parts, and hot surfaces. Do not expose hoses to temperatures above 180° F (82° C) or below -40° F (-40° C).
- Do not lift pressurized equipment.

WARNING



FIRE AND EXPLOSION HAZARD

Improper grounding, poor ventilation, open flames, or sparks can cause a hazardous condition and result in a fire or explosion and serious injury.



- Ground all equipment and the equipment being dispensed to. Refer to **Grounding** on page 6.
- If there is any static sparking or you feel an electric shock while using this equipment, **stop dispensing immediately**. Do not use the equipment until you identify and correct the problem.
- Do not use kerosene or other flammable solvents or combustible gases to flush the unit.
- Provide fresh air ventilation to avoid the buildup of flammable fumes from solvents or the fluid being dispensed.
- Keep the dispensing area free of debris, including solvent, rags, and gasoline.
- Do not smoke in the dispensing area.
- Extinguish all open flames and pilot lights in the dispensing area.



MOVING PARTS HAZARD

Moving parts, such as the rotating blades of the agitator, can pinch or amputate your fingers or other body parts and can cause splashing in the eyes or on the skin.

- Keep clear of all moving parts when starting or operating the agitator.
- Always shut off the agitator and disconnect the air line before you remove the agitator from the drum or check or repair any part of the agitator.
- Do not operate the agitator while an air line is hooked up to the elevator air fitting. Such operation could cause the agitator blades to turn while the elevator is raised, which could result in serious bodily injury or damage to the equipment from the hose getting tangled in the rotating agitator blades.



TOXIC FLUID HAZARD

Hazardous fluids or toxic fumes can cause serious injury or death if splashed in the eyes or on the skin, swallowed, or inhaled. When flushing the air motor or pump, keep your face away from the exhaust port.

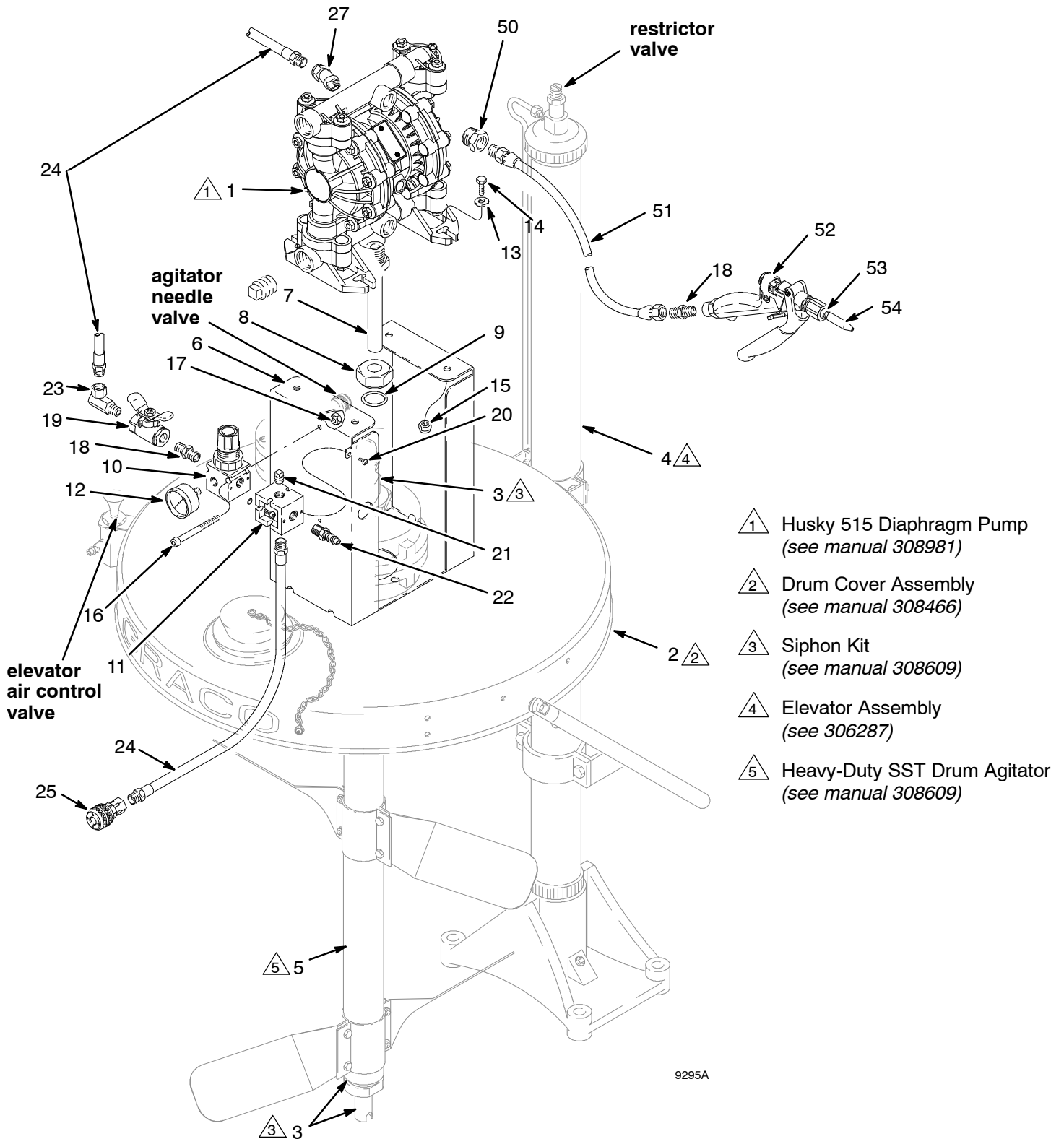
Parts Drawing

Husky 515 55-Gallon Dispense Package with Gun, Model 231418, Series B

Includes items 1 through 54

Husky 515 55-Gallon Dispense Package, Model 231419, Series B

Includes items 1 through 26



9295A

Parts List

Husky 515 55-Gallon Dispense Package with Gun, Model 231418, Series B

Includes items 1 through 54.

Husky 515 55-Gallon Dispense Package, Model 231419, Series B

Includes items 1 through 26.

Ref No.	Part No.	Description	Qty.	Ref No.	Part No.	Description	Qty.
1	241564	PUMP, Husky 515, acetal <i>See manual 308981.</i>	1	14	100022	SCREW, cap	4
2	238283	DRUM COVER ASSEMBLY <i>See manual 308466.</i>	1	15	108094	NUT, lock	4
3	238250	SIPHON KIT <i>See manual 308609.</i>	1	16	111821	SCREW, mach, hex head	1
4	237746	ELEVATOR ASSEMBLY <i>See manual 306287.</i>	1	17	111280	NUT, locking	1
5	238157	DRUM AGITATOR, heavy duty; SST <i>See manual 308609.</i>	1	18	156971	NIPPLE, short	2
6	191565	BRACKET, pump	1	19	110223	BALL VALVE, vented	1
7	191566	UNION, suction tube	1	20	108865	SCREW, mach, pan head	1
8	191567	NUT, union, swivel	1	21	100721	PLUG, pipe, headless	1
9	113575	O-RING, packing	1	22	169971	FITTING, air line	1
10	111804	REGULATOR, air	1	23	155541	UNION, swivel; 90°	1
11	111805	BLOCK, diverter	1	24	203266	HOSE, coupled	2
12	108190	GAUGE, air pressure	1	25	208536	COUPLER, air line	1
13	100086	WASHER, plain	4	27	110733	ELBOW, 45°, 1/4 npt	1
				50	158212	BUSHING, pipe	1
				51	238740	HOSE, coupled, conductive	1
				52	237607	FLOW GUN, severe duty	1
				53	168683	BUSHING, nozzle	1
				54	161505	NOZZLE, flow gun	1

Installation

Mounting the Elevator Base to the Floor

WARNING

You must mount the elevator base to the floor before you operate this equipment.

1. Position the elevator where there is at least 9 feet (2.75 meters) of overhead clearance.
2. Mark and drill holes in the floor for 0.5-in. (13 mm) mounting bolts. See the mounting layout in the **Dimensional Drawing** on page 7.
3. Level the elevator base, using shims if necessary, and bolt the base firmly to the floor.

Grounding

Proper grounding is an essential part of maintaining a safe system.

To reduce the risk of static sparking, the mounting cover and all electrically conductive objects or devices in the dispensing area **must** be properly grounded. Check your local electrical code for detailed grounding instructions for your area and type of equipment.

To ground the dispenser, connect the end of the ground wire to a true earth ground.

Operation

WARNING



MOVING PARTS HAZARD

To reduce the risk of serious injury, including cuts, amputation of fingers by the agitator blades, and splashing in the eyes or on the skin, always shut off the agitator (disconnect the air line from the agitator) before you raise, check, or repair the agitator.

Never operate the agitator when the elevator is raised. See **Moving Parts Hazard** on page 3.

4. Using the needle valve on the agitator to adjust the agitator speed, gradually increase the speed until you can see (through the inspection port in the drum cover) movement in the surface of the liquid, but do not increase the agitator speed enough to create a vortex in the surface of the liquid. If the surface begins to vortex, decrease the agitator speed to prevent air entrainment.

NOTE: Always maintain moderate agitator speed, which is approximately 50 rpm of the agitator blades. Excessive agitator speed may cause vibration, foaming of fluid, and increased wear on parts. Always agitate fluid thoroughly before supplying it to the dispensing equipment, and continue agitating fluid while the dispensing equipment is being supplied.

Startup

See the **Parts Drawing** on page 4.

1. **Flush the dispenser before first use.**

NOTE: The pump was tested in water. To eliminate possible contamination of the fluid you are pumping, before you use the dispenser, flush the pump thoroughly with a solvent compatible to the solvent you are dispensing.

2. Ensure that the needle valve on the agitator is closed and that the dispenser ball valve (19) is closed.
3. Connect the air supply line to the male air line fitting (22).

5. Use the regulator (10) and ball valve (19) to control the pressure and operation of the pump (1).
6. Raise or lower the elevator by pulling out or pushing in the air control valve (a push-pull handle) on the rim of the drum cover. Normal operation requires only a few seconds for air pressure to build up and raise the elevator or to exhaust and lower the elevator.

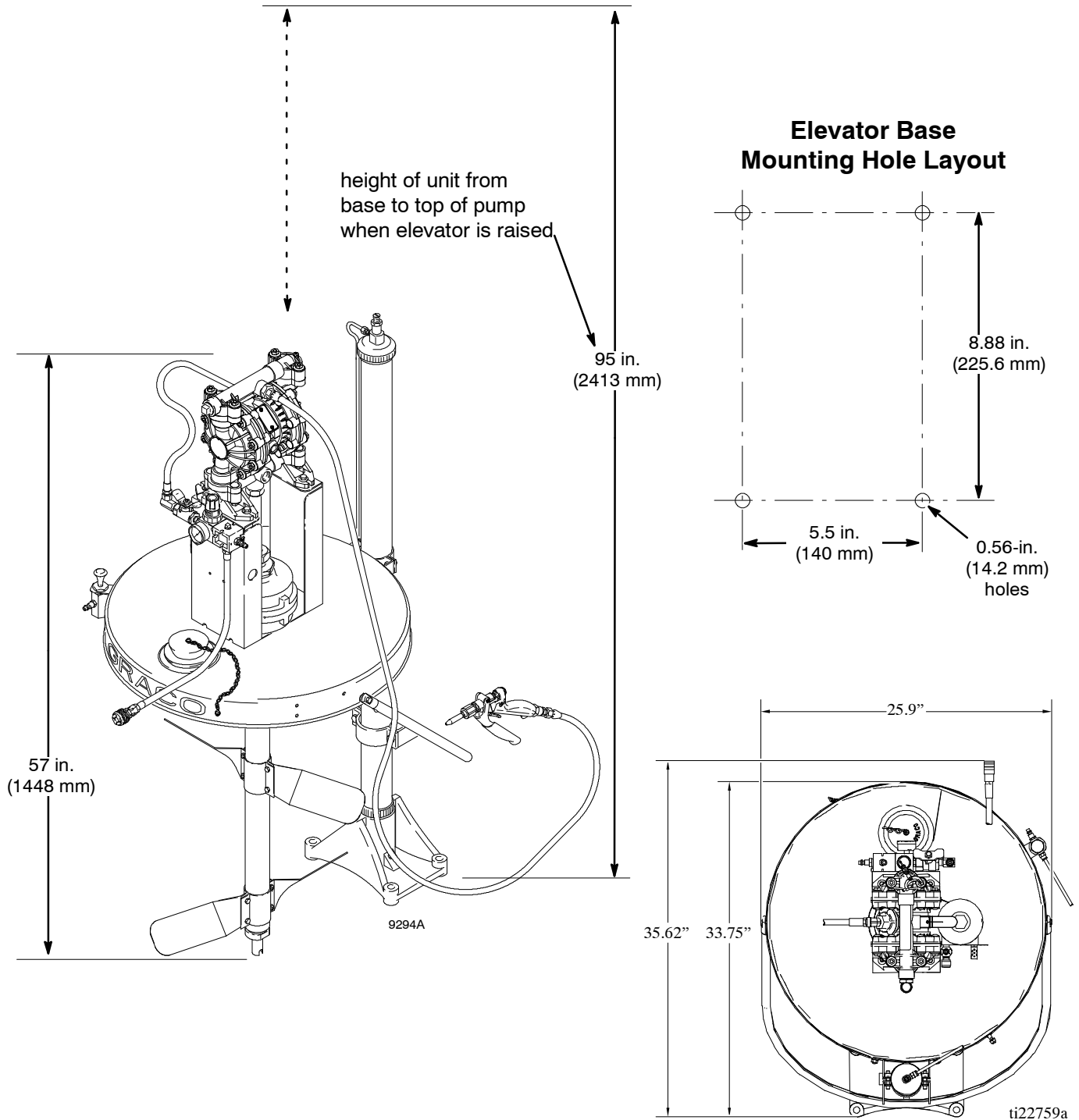
NOTE: To increase the operating speed of the elevator, loosen the hex nut on the restrictor valve, and turn the valve needle out. To decrease the operating speed, turn the valve needle in. The restrictor valve is on the top of the elevator, as shown in the **Parts Drawing**.

Service and Technical Data

See the individual component instruction manuals for service instructions and technical data.

Dimensional Drawing

NOTE: See individual component instruction manuals for dimensions of agitator, pump, elevator, siphon kit, and drum cover.



The Graco Warranty and Disclaimers

WARRANTY

Graco warrants all equipment manufactured by it and bearing its name to be free from defects in material and workmanship on the date of sale by an authorized Graco distributor to the original purchaser for use. As purchaser's sole remedy for breach of this warranty, Graco will, for a period of twelve months from the date of sale, repair or replace any part of the equipment proven defective. This warranty applies only when the equipment is installed, operated and maintained in accordance with Graco's written recommendations.

This warranty does not cover, and Graco shall not be liable for, any malfunction, damage or wear caused by faulty installation, misapplication, abrasion, corrosion, inadequate or improper maintenance, negligence, accident, tampering, or substitution of non-Graco component parts. Nor shall Graco be liable for malfunction, damage or wear caused by the incompatibility with Graco equipment of structures, accessories, equipment or materials not supplied by Graco, or the improper design, manufacture, installation, operation or maintenance of structures, accessories, equipment or materials not supplied by Graco.

This warranty is conditioned upon the prepaid return of the equipment claimed to be defective to an authorized Graco distributor for verification of the claim. If the claimed defect is verified, Graco will repair or replace free of charge any defective parts. The equipment will be returned to the original purchaser transportation prepaid. If inspection of the equipment does not disclose any defect in material or workmanship, repairs will be made at a reasonable charge, which charges may include the costs of parts, labor and transportation.

DISCLAIMERS AND LIMITATIONS

The terms of this warranty constitute purchaser's sole and exclusive remedy and are in lieu of any other warranties (express or implied), **including warranty of merchantability or warranty of fitness for a particular purpose**, and of any non-contractual liabilities, including product liabilities, based on negligence or strict liability. Every form of liability for direct, special or consequential damages or loss is expressly excluded and denied. In no case shall Graco's liability exceed the amount of the purchase price. Any action for breach of warranty must be brought within two (2) years of the date of sale.

EQUIPMENT NOT COVERED BY GRACO WARRANTY

Graco makes no warranty, and disclaims all implied **warranties of merchantability and fitness for a particular purpose**, with respect to accessories, equipment, materials, or components sold but not manufactured by Graco. These items sold, but not manufactured by Graco (such as electric motor, switches, hose, etc.) are subject to the warranty, if any, of their manufacturer. Graco will provide purchaser with reasonable assistance in making any claim for breach of these warranties.

Graco Phone Number

For the latest information about Graco products, visit www.graco.com.
For patent information, see www.graco.com/patents.

TO PLACE AN ORDER, contact your Graco distributor, or call to identify the distributor closest to you:
Phone: 6126236921 **or Toll Free:** 1-800-328-0211 **Fax:** 612-378-3505

*All written and visual data contained in this document reflects the latest product information available at the time of publication.
Graco reserves the right to make changes at any time without notice.*

Original instructions. This manual contains English. MM 308666.

Graco Headquarters: Minneapolis
International Offices: Belgium, China, Japan, Korea

GRACO INC. AND SUBSIDIARIES P.O. BOX 1441 MINNEAPOLIS, MN 55440-1441 USA

©COPYRIGHT 1996, GRACO INC. All Graco manufacturing locations are registered to ISO 9001.

www.graco.com

Revision C, January 2014

Free Manuals Download Website

<http://myh66.com>

<http://usermanuals.us>

<http://www.somanuals.com>

<http://www.4manuals.cc>

<http://www.manual-lib.com>

<http://www.404manual.com>

<http://www.luxmanual.com>

<http://aubethermostatmanual.com>

Golf course search by state

<http://golfingnear.com>

Email search by domain

<http://emailbydomain.com>

Auto manuals search

<http://auto.somanuals.com>

TV manuals search

<http://tv.somanuals.com>