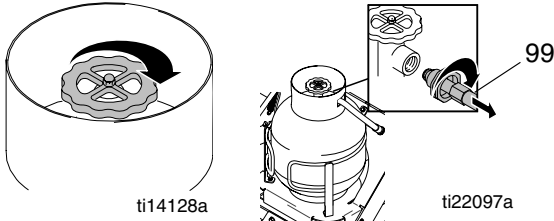
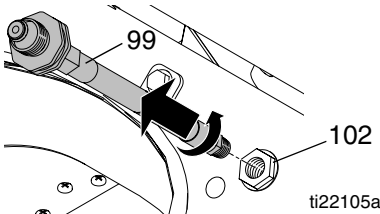


300 psi LPG Gas Gauge Installation for ThermoLazer

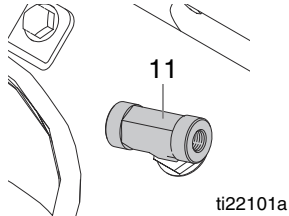
1. Close manual gas shutoff valve on propane tank, then disconnect gas supply hose (99) from propane tank.



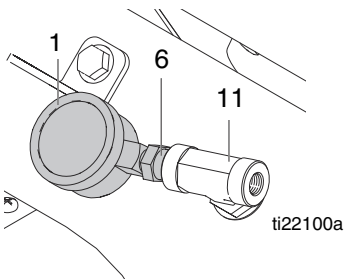
2. Unscrew gas supply hose (99) from bulkhead fitting (102).



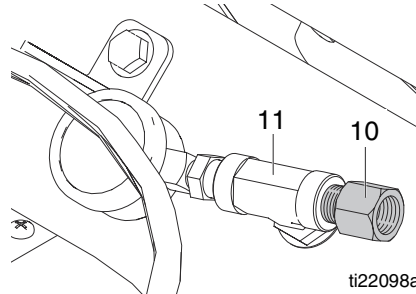
3. Apply pipe sealant to tee fitting (11) and screw into bulkhead fitting (102). Screw in until gas tight. Install tee as shown.



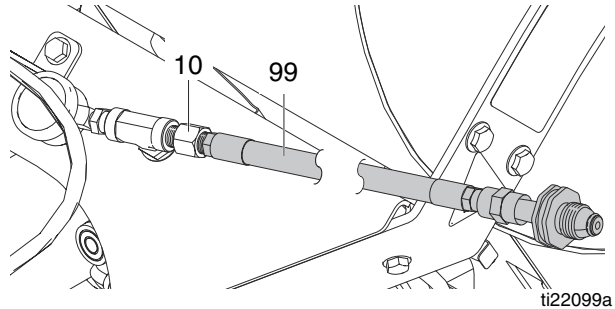
4. Apply pipe sealant to bushing (6) and screw into tee fitting (11). Screw in until gas tight. Position gauge (1) as shown.



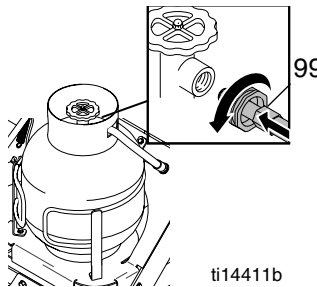
5. Apply pipe sealant to filter fitting (10) and screw into tee fitting (11). Screw in until gas tight.



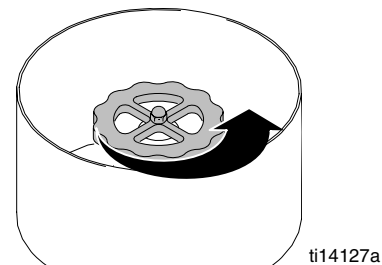
6. Apply pipe sealant to hose (99) and screw into filter fitting (10). Screw in until gas tight.



7. Connect gas supply hose (99) to propane tank.



8. Open manual gas shutoff valve on propane.



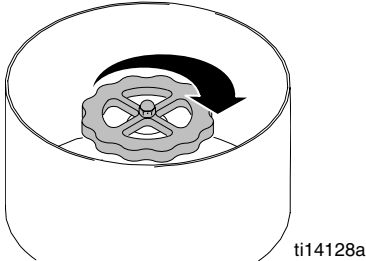
9. Check gas line for gas leaks (see ThermoLazer Operation Manual).

NOTICE

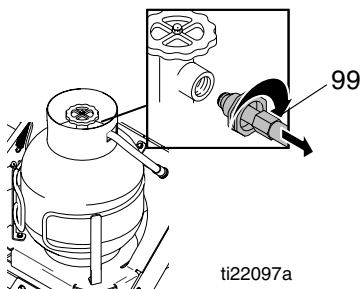
Tighten by turning bushing (6) and holding tee fitting (11). Do NOT turn gauge (1). Damage to the gauge will occur.

Pressure Tap Installation for ThermoLazer

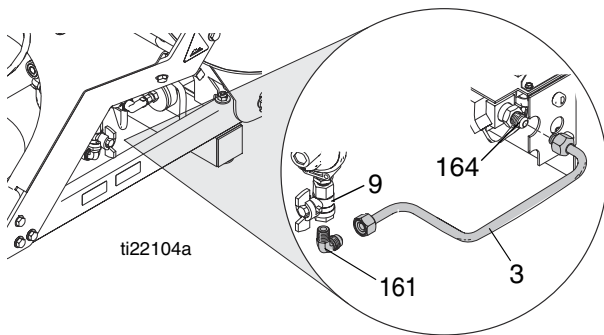
1. Close manual gas shutoff valve on propane tank.



2. Disconnect gas supply hose (99) from propane tank.

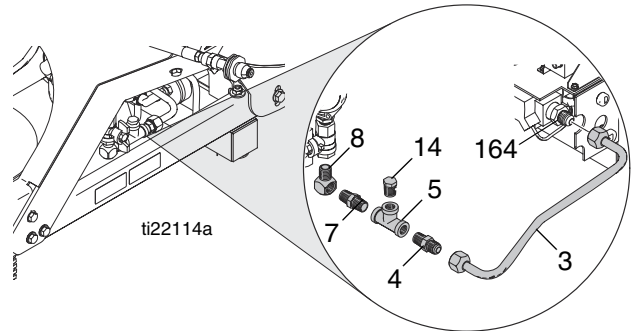


3. Remove and discard existing gas line (3) by unscrewing from elbow fitting (161) and unscrewing from gas safety valve adapter fitting (164).
4. Remove and discard existing elbow fitting (161) by unscrewing from manual gas shutoff valve (9).

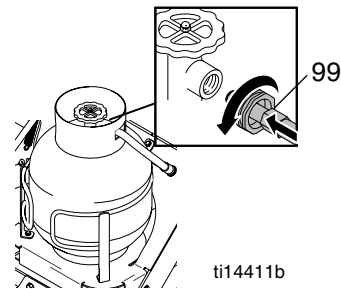


5. Apply pipe sealant to elbow fitting (8) and screw into manual gas shutoff valve (9). Screw in until gas tight. Position fitting as shown.
6. Apply pipe sealant to adapter fitting (7) and screw into tee fitting (11). Screw in until gas tight.
7. Apply pipe sealant to adapter fitting (4) and screw into tee fitting (11). Screw in until gas tight.
8. Apply pipe sealant to adapter fitting (7) and screw into elbow fitting (8). Screw in until gas tight. Position fittings as shown.

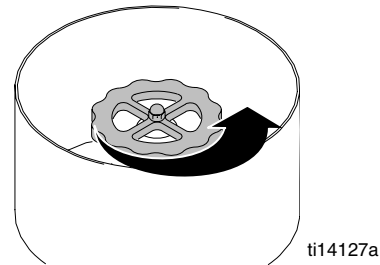
9. Install new gas line (3) by screwing into gas safety valve adapter fitting (164) and screwing into adapter fitting (4). Screw in until gas tight.



10. Connect gas supply hose (99) to propane tank.



11. Open manual gas shutoff valve on propane.



12. Check gas lines for gas leaks (see ThermoLazer Operation Manual).

*All written and visual data contained in this document reflects the latest product information available at the time of publication.
Graco reserves the right to make changes at any time without notice.*

For patent information, see www.graco.com/patents.

Original instructions. This manual contains English. MM 332653

Graco Headquarters: Minneapolis
International Offices: Belgium, China, Japan, Korea

GRACO INC. AND SUBSIDIARIES • P.O. BOX 1441 • MINNEAPOLIS MN 55440-1441 • USA

Copyright 2012, Graco Inc. All Graco manufacturing locations are registered to ISO 9001.

www.graco.com

Revision A - 2013

Download from Www.Somanuals.com. All Manuals Search And Download.

Free Manuals Download Website

<http://myh66.com>

<http://usermanuals.us>

<http://www.somanuals.com>

<http://www.4manuals.cc>

<http://www.manual-lib.com>

<http://www.404manual.com>

<http://www.luxmanual.com>

<http://aubethermostatmanual.com>

Golf course search by state

<http://golfingnear.com>

Email search by domain

<http://emailbydomain.com>

Auto manuals search

<http://auto.somanuals.com>

TV manuals search

<http://tv.somanuals.com>